

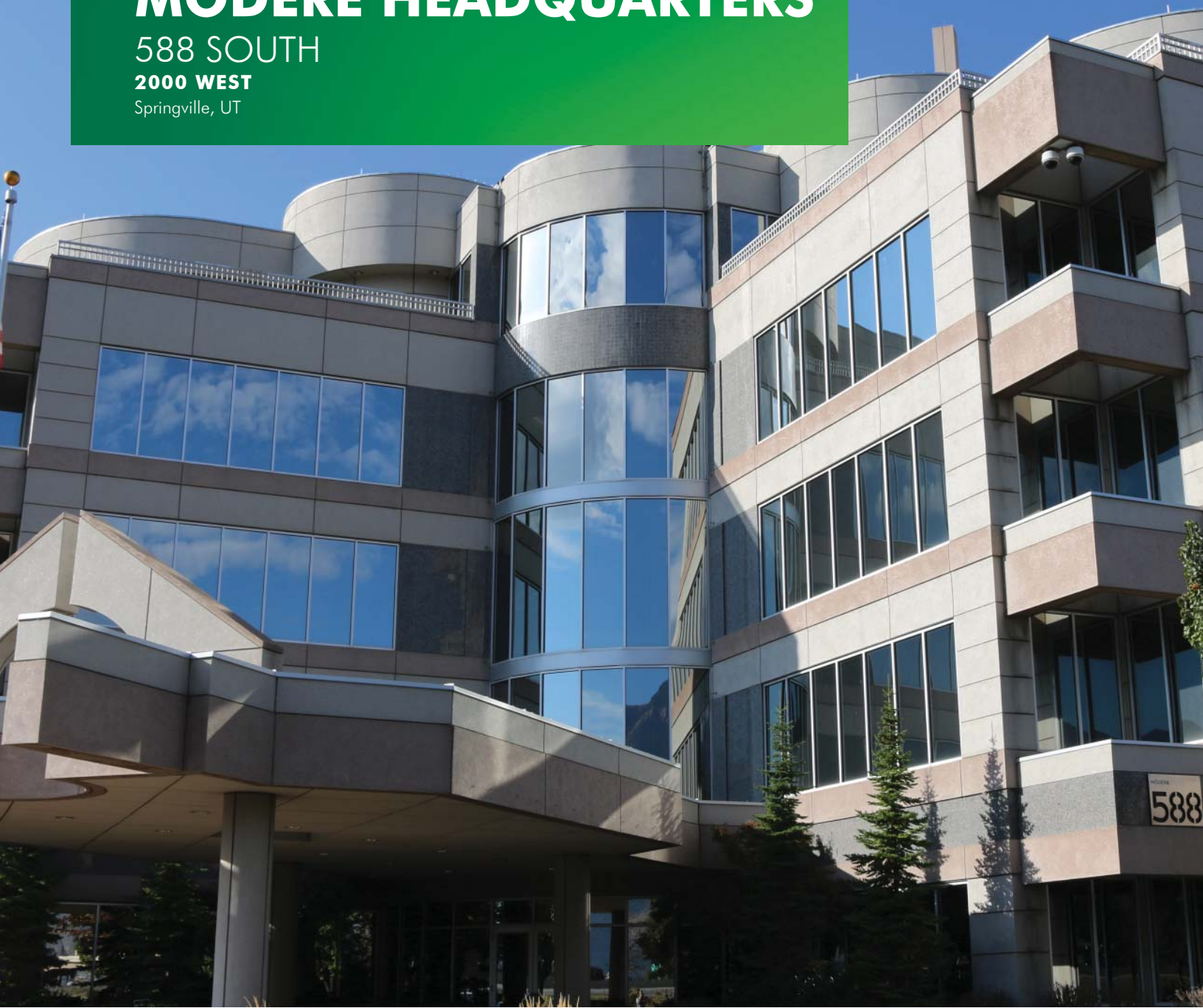
FOR LEASE

MODERE HEADQUARTERS

588 SOUTH

2000 WEST

Springville, UT



BEAUTIFULLY UNIQUE CLASS A OFFICE SPACE IN THE HEART OF SPRINGVILLE

- + 18.75/SF, Full Service
- + 9,927 - 80,000 SF

- + Excellent freeway access
- + Great I-15 signage visibility

www.cbre.com/slc

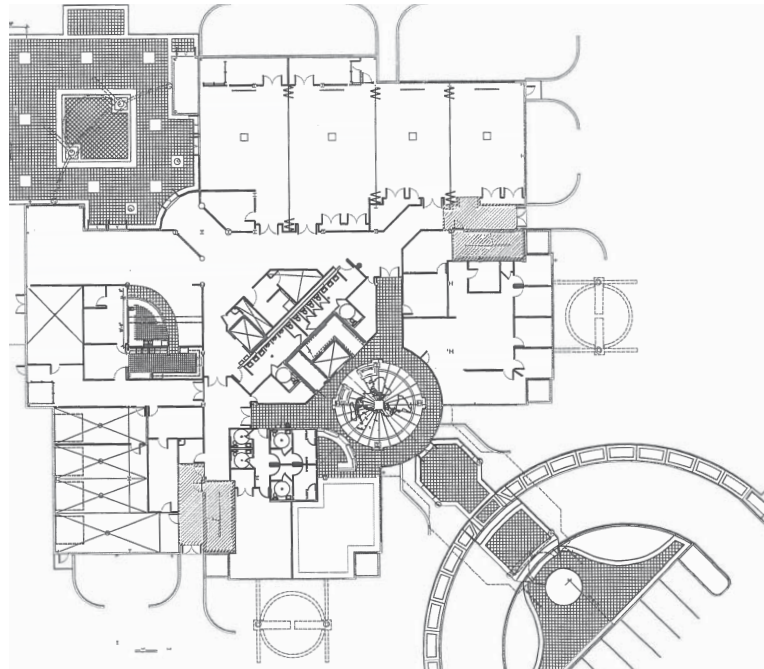
CBRE

FOR LEASE MODERE HEADQUARTERS

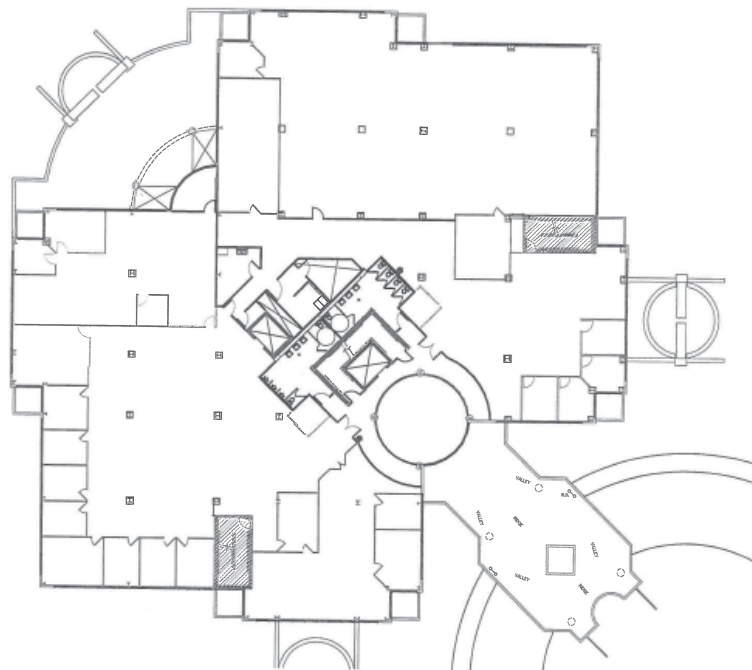


FLOOR PLANS

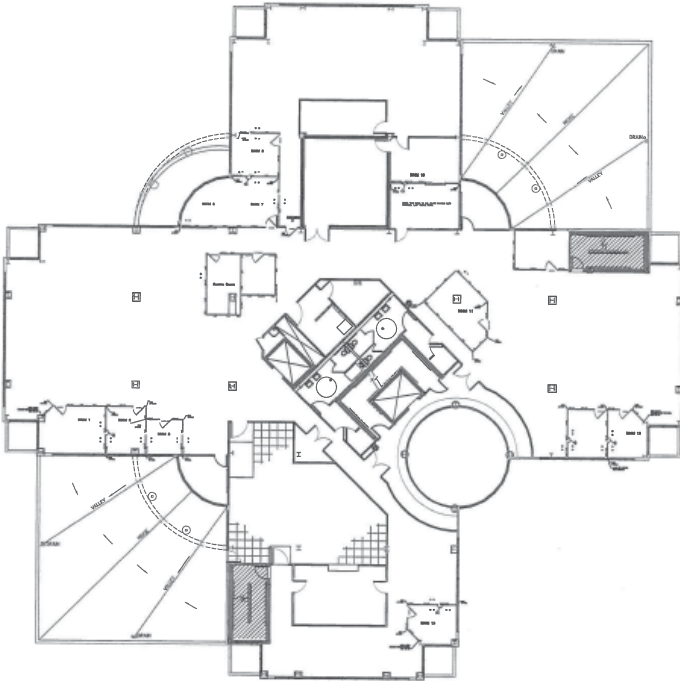
1ST FLOOR :: 20,102 SF



2ND FLOOR :: 19,266 SF



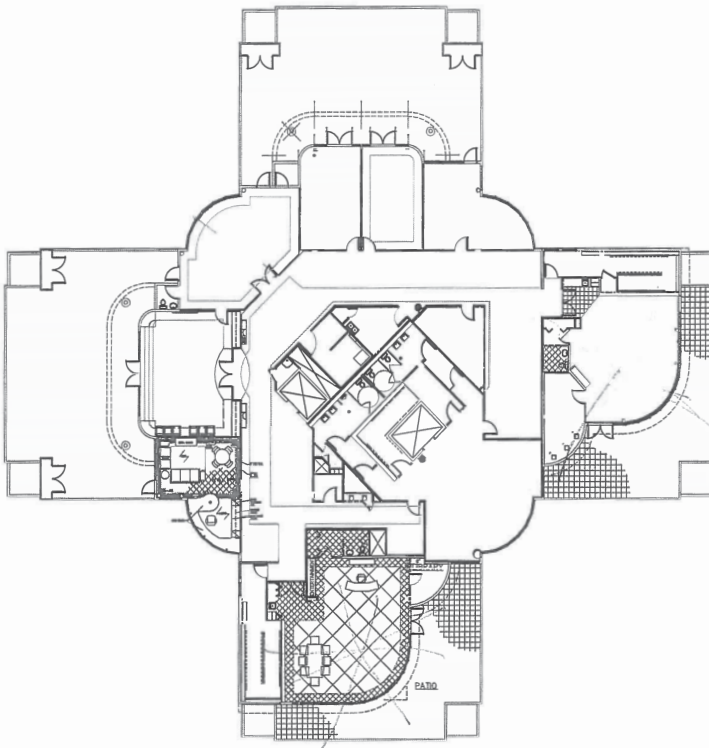
3RD FLOOR :: 15,000 SF



4TH FLOOR :: 15,522 SF



5TH FLOOR :: 9,927 SF



FOR LEASE MODERE HEADQUARTERS

588 SOUTH
2000 WEST
Springville, UT



PROPERTY LOCATION



CONTACT

KREG PETERSON

First Vice President
+1 801 869 8092
kreg.peterson@cbre.com

ERIC SMITH

Senior Vice President
+1 801 869 8008
eric.smith@cbre.com

LAURIE ADAIR

Senior Associate
+1 801 869 8009
laurie.adair@cbre.com

© 2016 CBRE, Inc. This information has been obtained from sources believed reliable. We have not verified it and make no guarantee, warranty or representation about it. Any projections, opinions, assumptions or estimates used are for example only and do not represent the current or future performance of the property. You and your advisors should conduct a careful, independent investigation of the property to determine to your satisfaction the suitability of the property for your needs.

Photos herein are the property of their respective owners and use of these images without the express written consent of the owner is prohibited.

www.cbre.com/slc

CBRE