



TOWER REALTY CORP.

SPECIALISTS IN COMMERCIAL AND INDUSTRIAL REAL ESTATE



**~ FOR LEASE ~
OFFICE SPACE**

The Bleachery, 143 West Street, New Milford, CT



Available Units:

Unit 121: +/- 1,800 Sq. Ft.

Unit 122: +/- 2,000 Sq. Ft.

Zone: I (Commercial)

Ceiling Height: +/- 14 Ft.

Utilities: City Water; Sewer

Heating: Gas Heat

Cooling: Central A/C

Parking: 5 Spaces for Every 1,000 Sq. Ft.

Elevator: Yes

Boat Slip: Free

Lease Price: \$12.00 NNN



Historic, fully restored 130,000 SF Historic Mill Building, 1/2 mile south of New Milford town green on the banks of the Housatonic inlet by Lake Lillinonah. Convenient to Routes 7, 202, and 67. Building has 12' operating windows, wood planked floors, natural brick interiors, is internet (cable) ready, fiber optic T1 on site and much more. Must see to fully appreciate.



Scan this image with your smart phone to get our latest exclusive listings.

FOR MORE INFORMATION CONTACT

Mick Consalvo
mconsalvo@towercorp.com

246 Federal Rd. D26 P.O. Box 5242 Brookfield, CT 06804

Tel: (203) 775-5000 ▪ Fax: (203) 775-7199

www.towercorp.com

No warranty of representation, expressed or implied is made as to the accuracy of the information contained herein, and same is submitted subject to errors, omissions, change of price, rental, sale or other conditions, withdrawal without notice, and to any special listing conditions imposed by our principals.



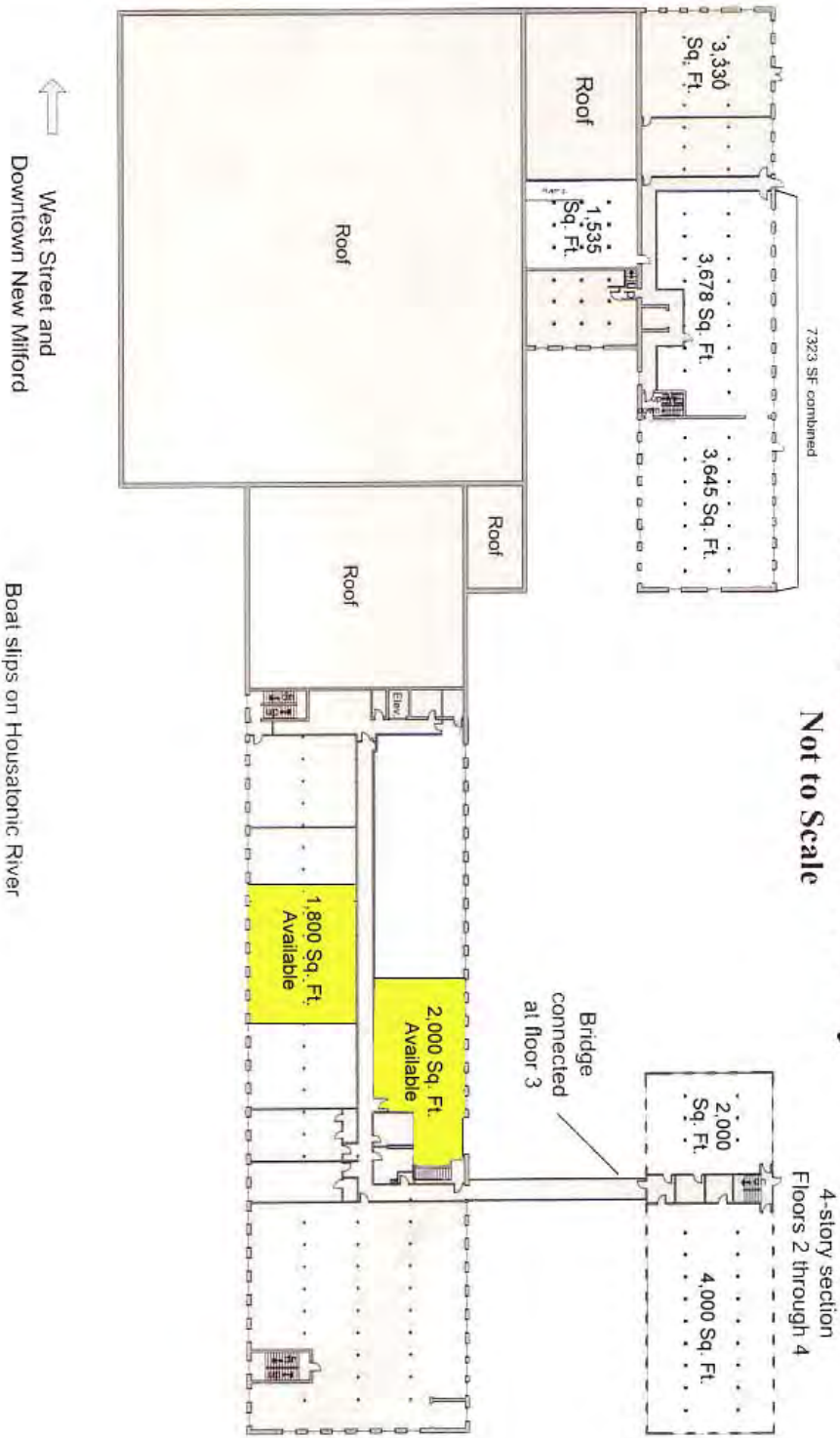
Scan this image with your smart phone to join our VIP email list for market updates and property listings.

The Bleachery

143 West Street, New Milford

Second Floor Vacancy

Not to Scale



The Bleachery

143 WEST STREET, NEW MILFORD, CT 06776

Historic, fully restored 130,000 SF mill building; 1/2-mile south of the New Milford Green on the banks of the Housatonic inlet by Lake Lillinonah. Convenient to Routes 7, 22, and 67 and local businesses.

Suitable for office, R&D, or flex-type uses. 24' high ceilings, 12' operating windows, antique timber beams, exposed brick walls, and natural hardwood floors all on a sprawling 12 acre campus setting.



143 West Street New Milford, CT

