

# LOGAN BUILDING

500 Union Street | SEATTLE, WASHINGTON





# amenities abound

## NEAR-BY AMENITIES



## LOGAN BUILDING FACTS

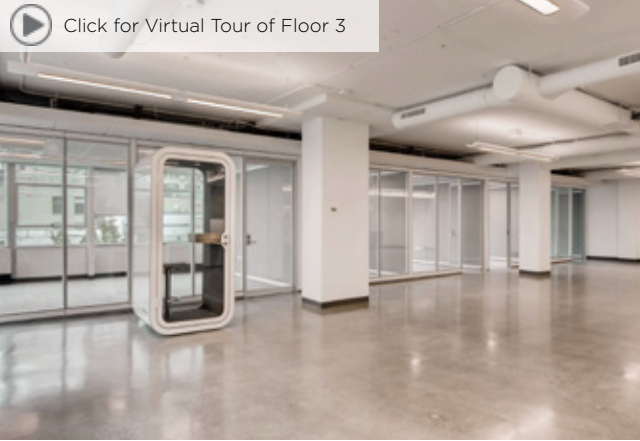
THE BUILDING	10 story office building totaling approximately 128,998 SF
YEAR BUILT	1959
RBA	128,998 SF
BUILDING AMENITIES	Building Conference Room, Bike storage facilities, Shower facility, and Specialty's Cafe & Bakery.

AREA AMENITIES	The building is located in the heart of Downtown Seattle's Retail Core; local to area recreation, hotels, theaters, restaurants, fitness facilities & retail shops.
----------------	---

RENTAL RATES	\$39.00 - \$45.00 per rentable square foot, Full Service
--------------	--

OWNERSHIP/ PROPERTY MANAGEMENT	Unico Properties
--------------------------------------	------------------







# LOGAN BUILDING

500 Union Street | SEATTLE, WASHINGTON

## BUILDING FEATURES

- Located on the corner of Fifth & Union, in the heart of Seattle's Retail Core, The Logan Building is situated perfectly in downtown Seattle for your business.
- The lobby renovation is now complete and helps to create a modern feel for tenants and their guests! Tenants will enjoy **newly modernized, ultra-efficient, elevators.**
- Close to retail outlets, restaurants and easy I-5 ingress / egress, The Logan Building will surpass everyday workplace needs.
- Recently renovated common areas include a building conference center to help create a great work environment for your business.
- Retailers at the base of the building are a newly remodeled and expanded Specialty's Café & Bakery and Charles Schwab.
- Bike storage / Shower facility

## AVAILABLE SUITES

Floor	Suite	RSF	Available Date	Comments
7	710	2,472	Now	Northeast corner suite with two private offices, conference room, open space, and kitchen area.
6	600	2,545	Now	Mix of private offices, conference rooms, and common spaces.
4	435	4,477	6/1/18	Wide open SW corner space.
4	410	3,268	Now	NW corner space; lobby exposure, corner suite.  Virtual Tour available at <a href="https://ow.ly/N5Yi30gCSIQ">ow.ly/N5Yi30gCSIQ</a>
4	402	2,518	Now	SE corner space; open work space with kitchenette; new ceiling, lighting, and flooring. Move-in ready.
3	325	3,413	Now	Ultimate flexibility to suit tenant's needs. Move-in ready.  Virtual Tour Available at <a href="https://ow.ly/htEM30dbOqP">ow.ly/htEM30dbOqP</a>

# LOGAN BUILDING

500 Union Street | SEATTLE, WASHINGTON 98101



Union Street

central location



Damon McCartney  
(206) 838-7633  
mccartney@broderickgroup.com

Oscar Oliveira  
(206) 838-7637  
oscar@broderickgroup.com

**Broderick Group, Inc.**  
601 Union Street  
Suite 1606  
Seattle, Washington 98101  
main: 206. 838. 5775  
www.broderickgroup.com



The information contained herein has been given to us by the owner or sources which we deem reliable. We have no reason to doubt its accuracy, but we do not guarantee it. Prospective tenants should carefully verify all information contained herein.

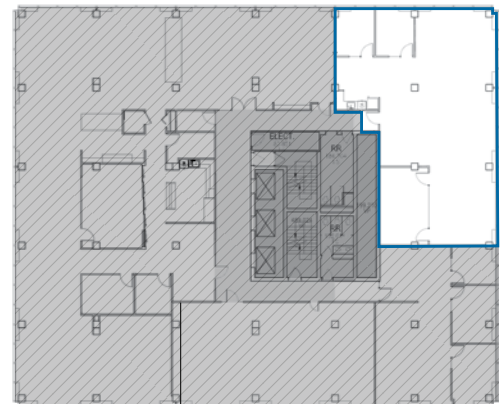
## Suite 710 | RENDERING

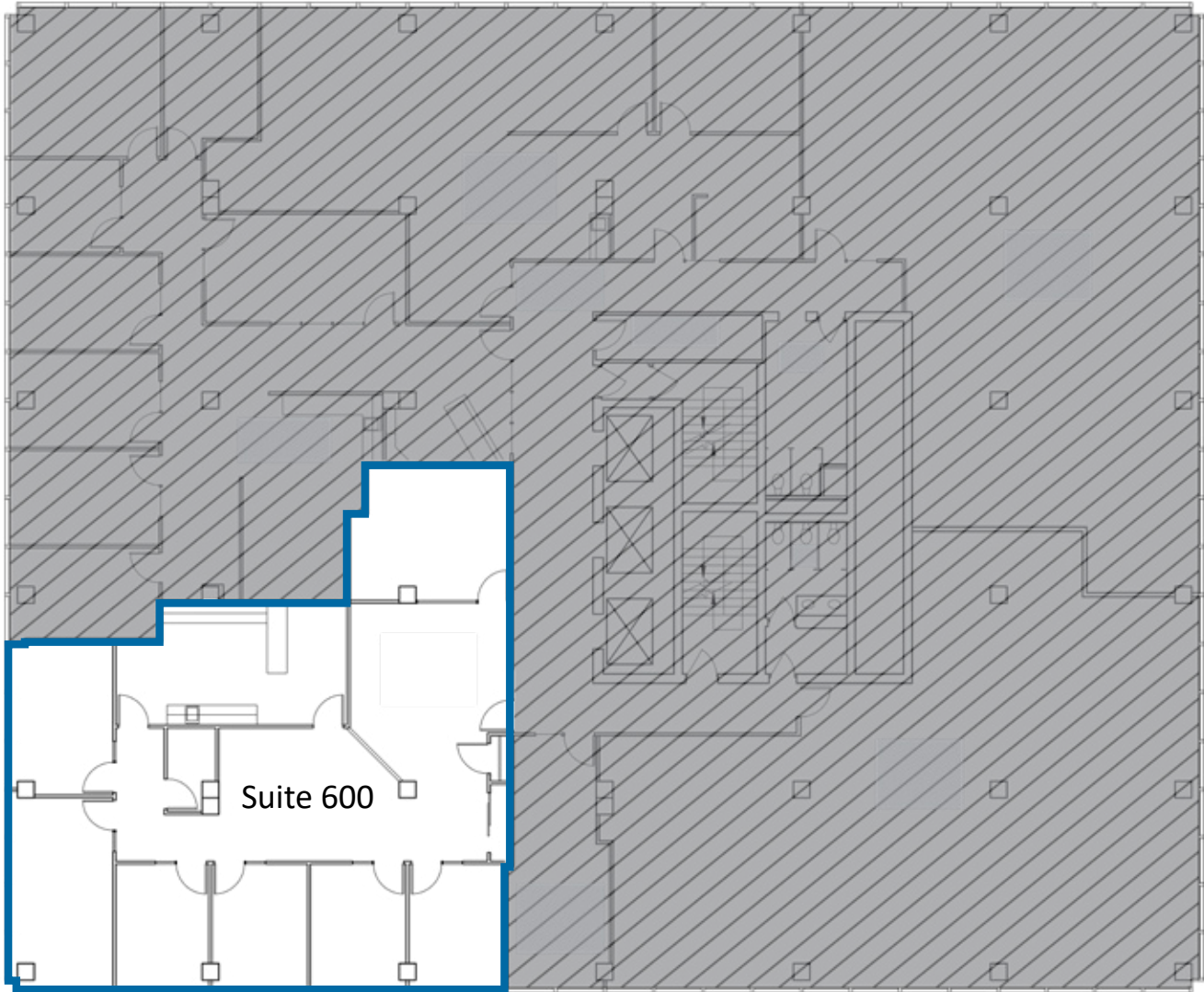
2,472 RSF



### Suite Features

- Northeast corner suite
- Two private offices
- Conference room
- Open space
- Kitchen
- Available now





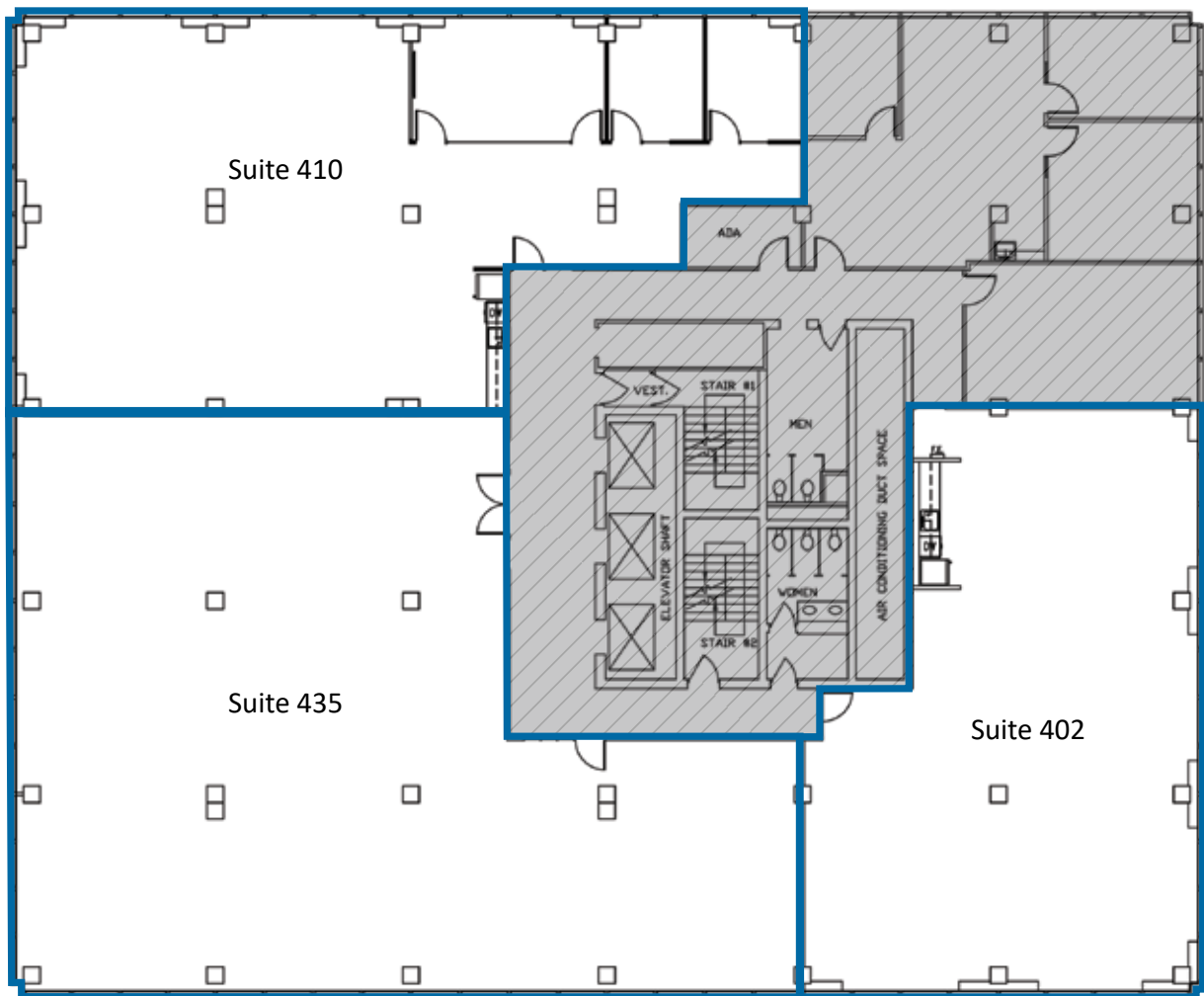
## Suite 600

2,545 RSF

- Private offices
- Conference room
- Available now

# LOGAN BUILDING

500 Union Street | SEATTLE, WASHINGTON



## Suite 410

3,268 RSF

- NW corner space
- Ready for tenant improvements



Virtual Tour available at [ow.ly/N5Yi30gCSIQ](http://ow.ly/N5Yi30gCSIQ)

## Suite 435

4,477 RSF

- Available 6/1/18
- SW corner space
- Wide open work space

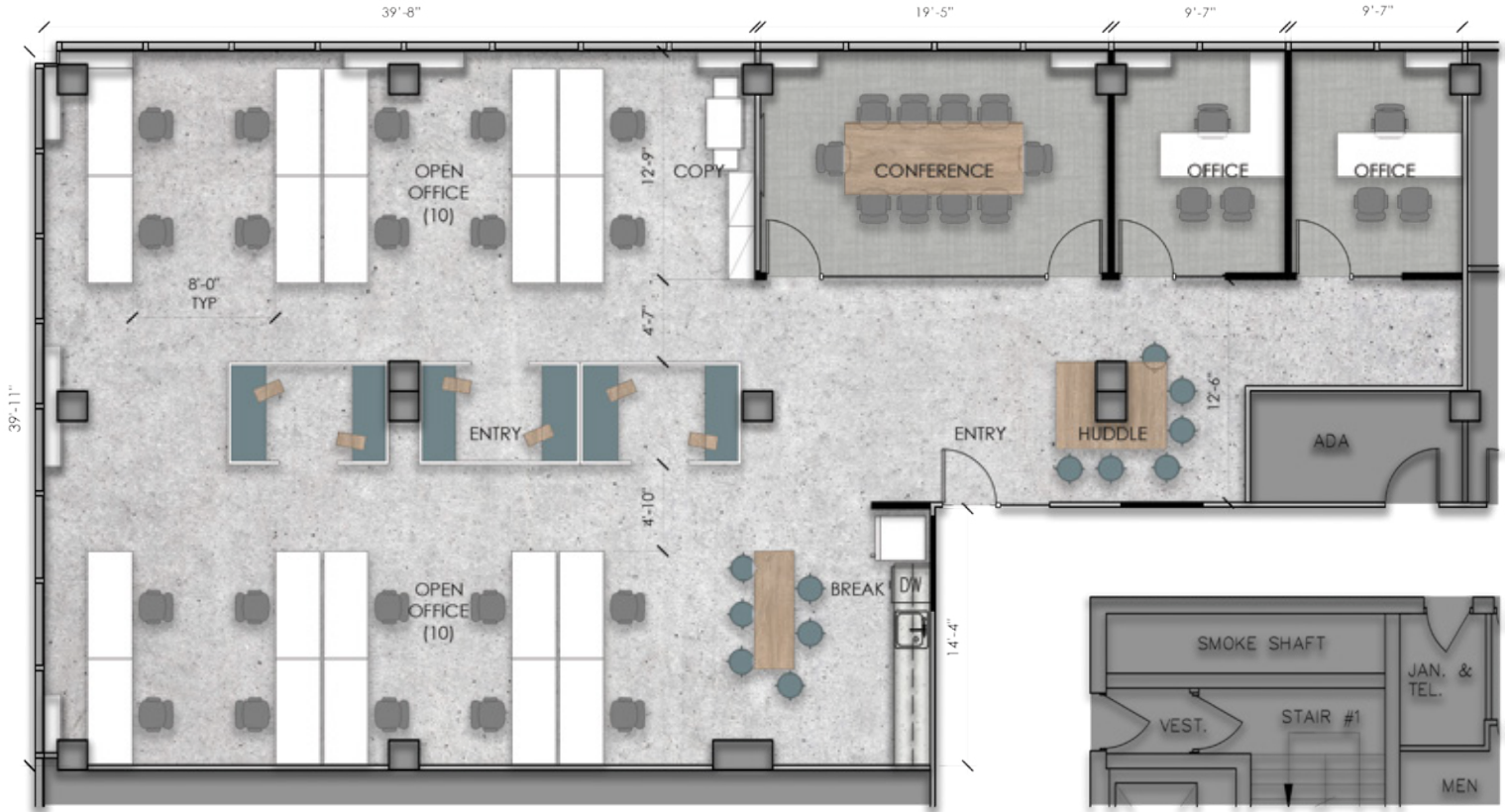
## Suite 402

2,518 RSF

- SE corner space
- Open work space
- Kitchenette
- New ceiling, lighting, and flooring
- Move-in ready

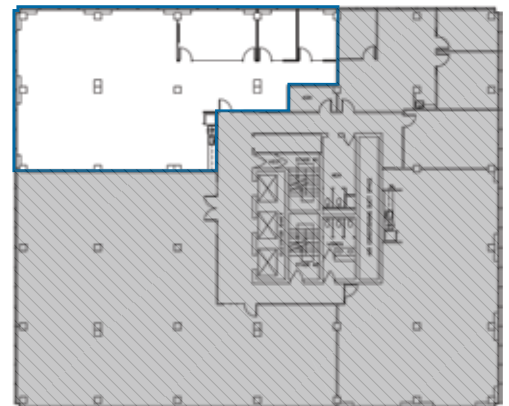
## Suite 410 | RENDERINGS

3,268 RSF



### Suite Features

- SE corner space
- Open work space
- Kitchenette
- New ceiling, lighting, and flooring
- Move-in ready

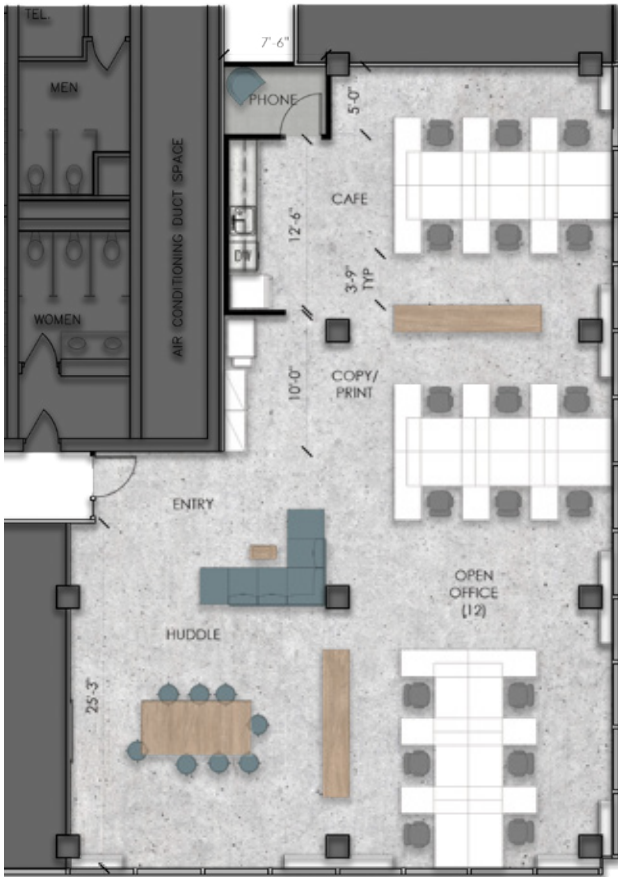




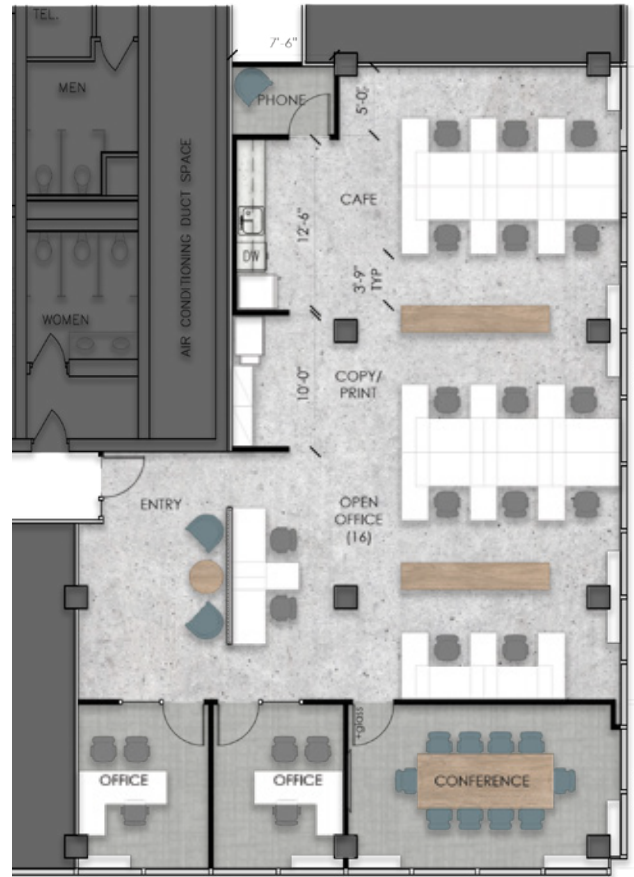
## Suite 402 | RENDERINGS

2,518 RSF

### Option A

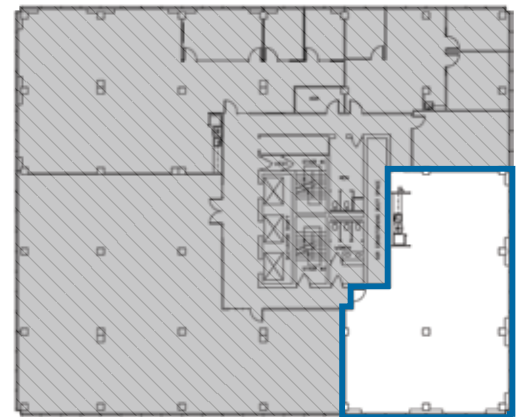


### Option B



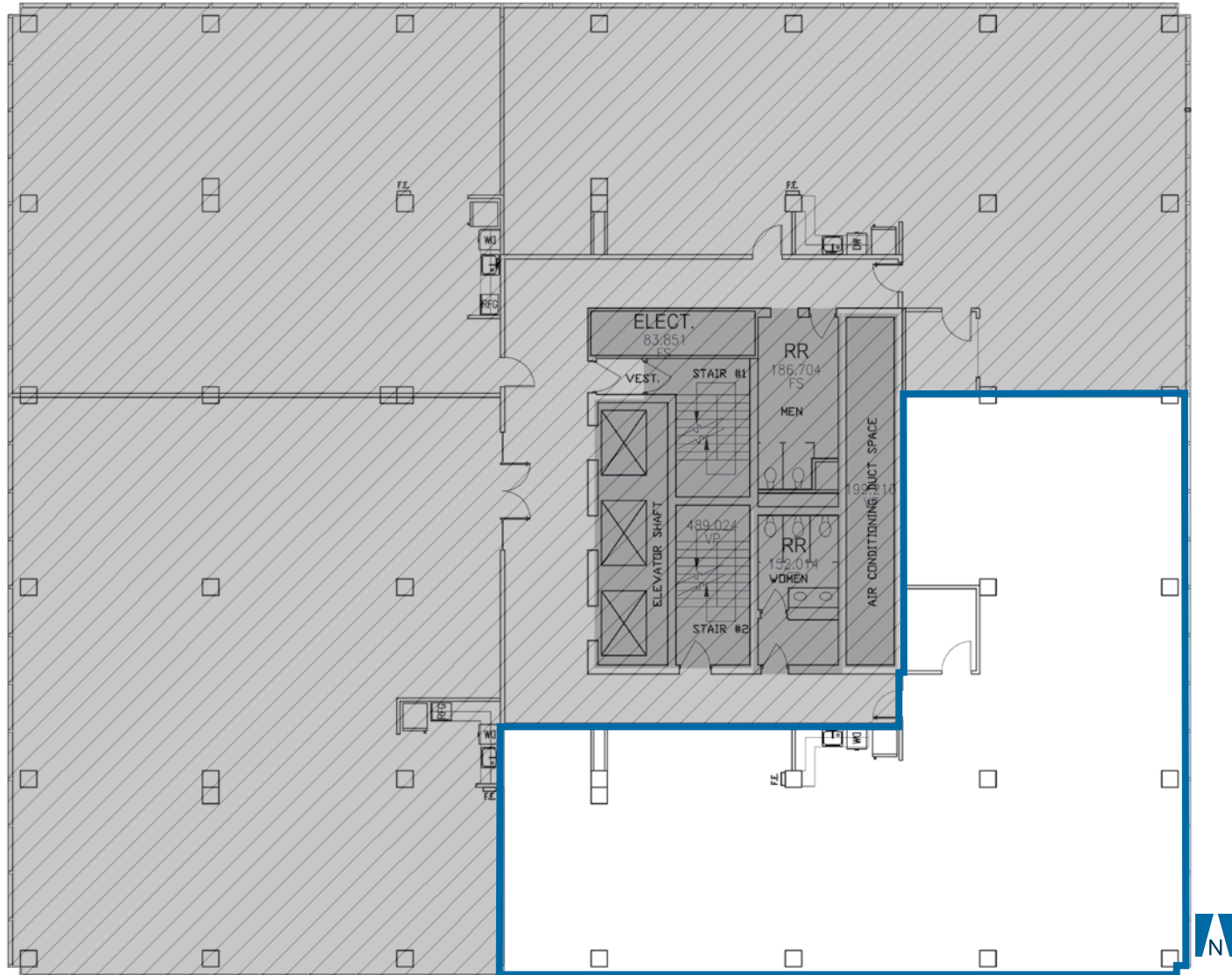
### Suite Features

- SE corner space
- Open work space
- Kitchenette
- New ceiling, lighting, and flooring
- Move-in ready



# LOGAN BUILDING

500 Union Street | SEATTLE, WASHINGTON



## Suite 325

3,413 RSF

- Available now
- SE corner space
- 12 - 36 month lease terms available
- Newly renovated suite



Virtual Tour of Floor 3 available at [ow.ly/htEM30dbOqP](https://ow.ly/htEM30dbOqP)



Damon McCartney  
(206) 838-7633  
mccartney@broderickgroup.com

Oscar Oliveira  
(206) 838-7637  
oscar@broderickgroup.com