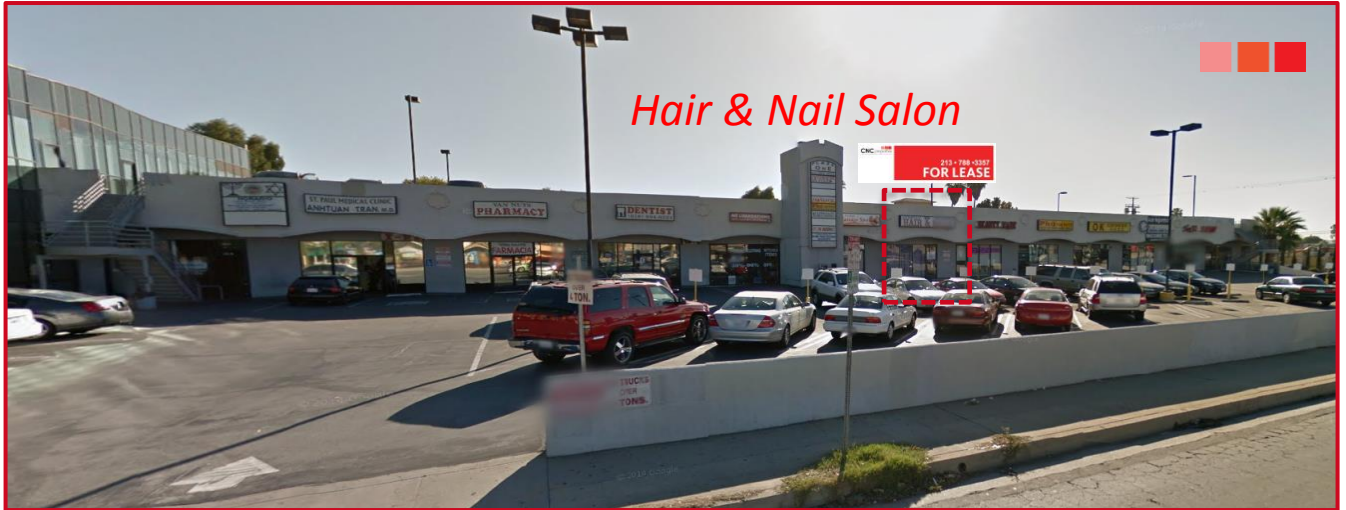


# RESTAURANT SPACE **FOR LEASE**

**7400 VAN NUYS BLVD., VAN NUYS, CA 91405**



## Neighboring



### Property Information

Location: 7400 Van Nuys Blvd., #107  
Van Nuys, CA 91405

Size: Approx. 1,274 sq.ft.

Rent: \$2.25 / sq.ft. / month, NNN

Available: Immediately

### Property Highlights

- Abundant parking spaces
- Neighboring tenants include medical offices, pharmacy, dental office and etc.
- Tremendous traffic counts
- Strong population growth

## For More Information, Contact:

**CNC properties**  
3660 Wilshire Blvd.  
Suite 1125  
Los Angeles, CA 90010  
www.cnccre.com

**Howard Chang**  
213.788.3357  
hchang@cnccre.com  
CA BRE Lic # 01700619

**Michael Cho**  
213.788.3357  
mcho@cnccre.com  
CA BRE Lic # 01779527

RESTAURANT SPACE **FOR LEASE**

**7400 VAN NUYS BLVD., VAN NUYS, CA 91405**



**For More Information, Contact:**

**CNC properties**  
3660 Wilshire Blvd.  
Suite 1125  
Los Angeles, CA 90010  
www.cnccre.com

**Howard Chang**  
213.788.3357  
hchang@cnccre.com  
CA BRE Lic # 01700619

**Michael Cho**  
213.788.3357  
mcho@cnccre.com  
CA BRE Lic # 01779527

# RESTAURANT SPACE FOR LEASE

7400 VAN NUYS BLVD., VAN NUYS, CA 91405

## Demographic Summary Report

### Population

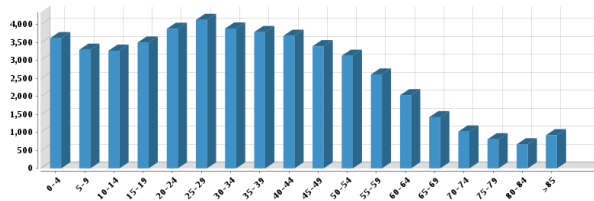
#### Summary

Estimated Population:	49,023
Population Growth (since 2010):	0.9%
Population Density (ppl / mile):	14,815
Median Age:	32.65

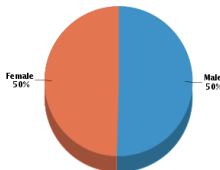
#### Household

Number of Households:	15,611
Household Size (ppl):	3
Households w/ Children:	6,852

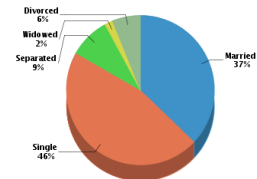
### Age



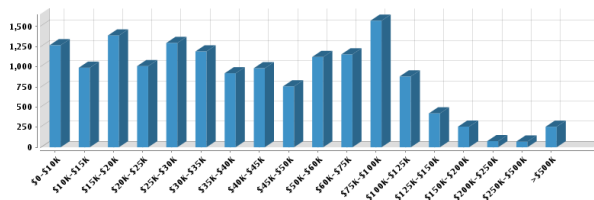
### Gender



### Marital Status



### Household Income



Average Household Income: \$51,189

Average Per Capita Income: \$17,028

**For More Information, Contact:**

**CNC properties**  
3660 Wilshire Blvd.  
Suite 1125  
Los Angeles, CA 90010  
www.cnccre.com

**Howard Chang**  
213.788.3357  
hchang@cnccre.com  
CA BRE Lic # 01700619

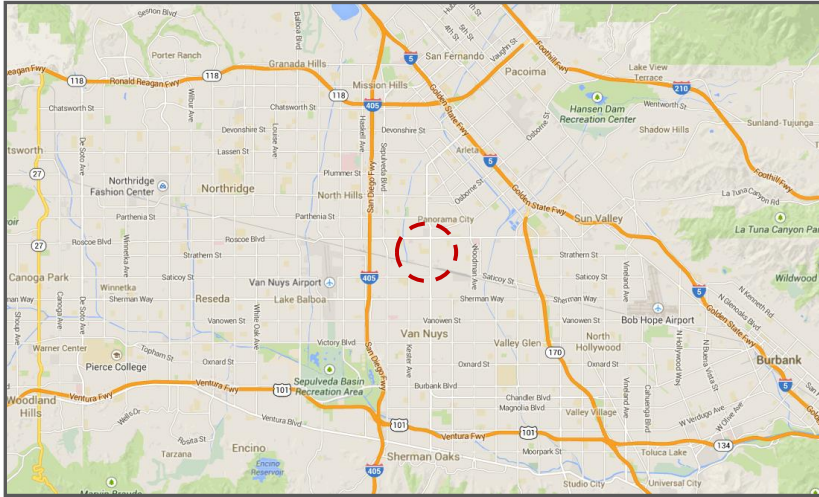
**Michael Cho**  
213.788.3357  
mcho@cnccre.com  
CA BRE Lic # 01779527



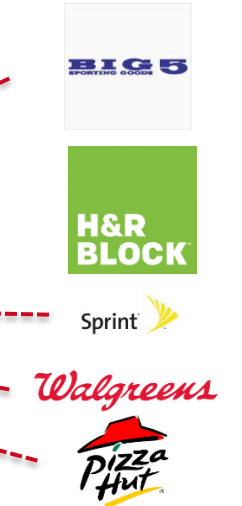
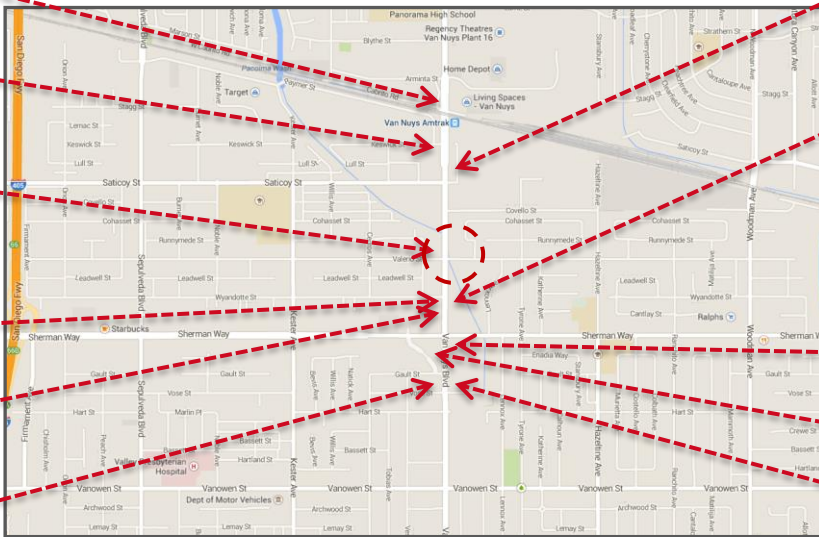
# RESTAURANT SPACE **FOR LEASE**

**7400 VAN NUYS BLVD., VAN NUYS, CA 91405**

## Property Location



**Smart & Final.**



**For More Information, Contact:**

**CNC properties**  
3660 Wilshire Blvd.  
Suite 1125  
Los Angeles, CA 90010  
www.cnccre.com

**Howard Chang**  
213.788.3357  
hchang@cnccre.com  
CA BRE Lic # 01700619

**Michael Cho**  
213.788.3357  
mcho@cnccre.com  
CA BRE Lic # 01779527