

for lease

MULTI-LEVEL

212.481.7943



666 BROADWAY

[entrances on Broadway and Bond Street]

Flagship



**Nancy Cibrano**

NCIBRANO.REALTY@GMAIL.COM

**Ariel Levy**

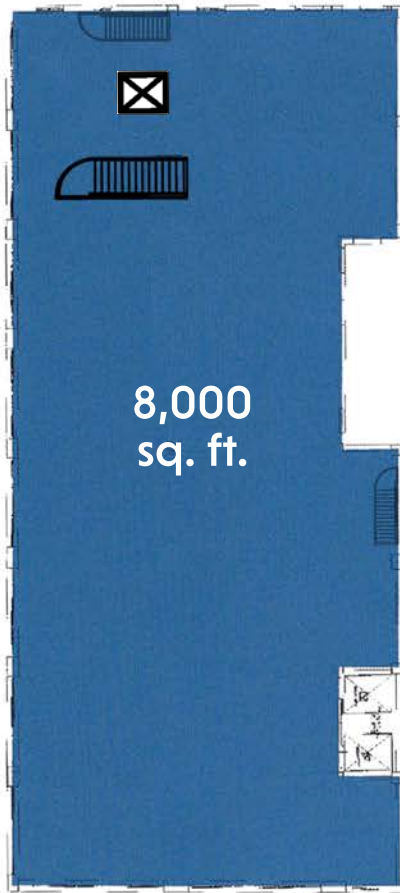
ARIEL.LEVY@WINGSGROUP.COM

# 666 BROADWAY

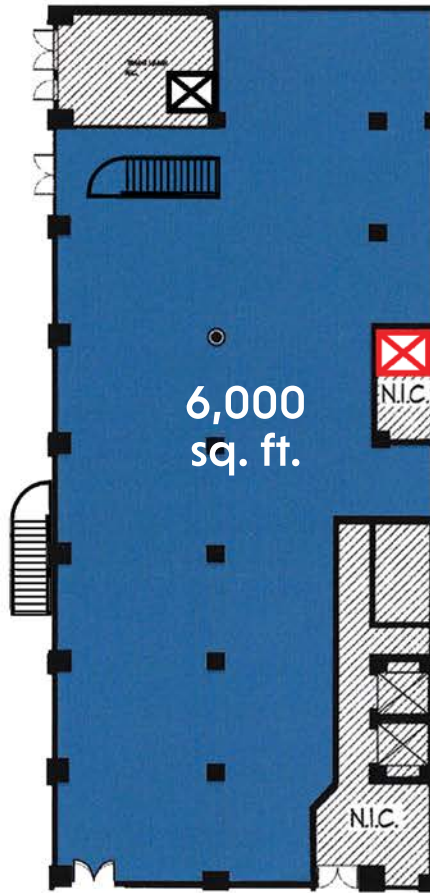
[entrances on Broadway and Bond Street]

# floor plans

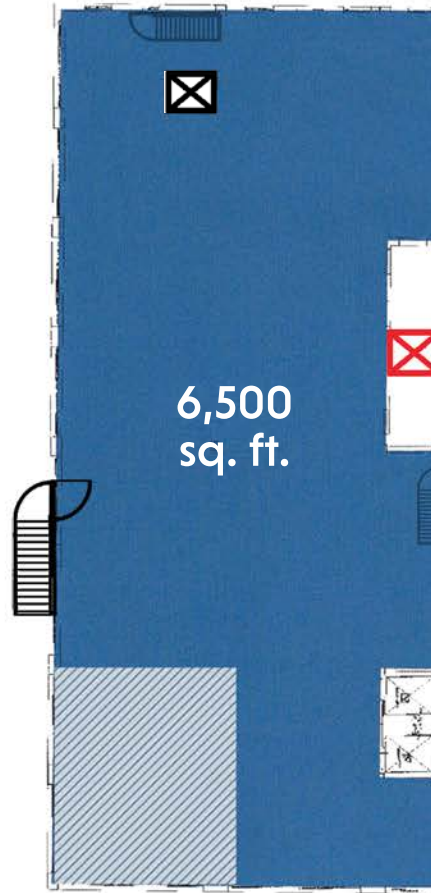
Second Floor



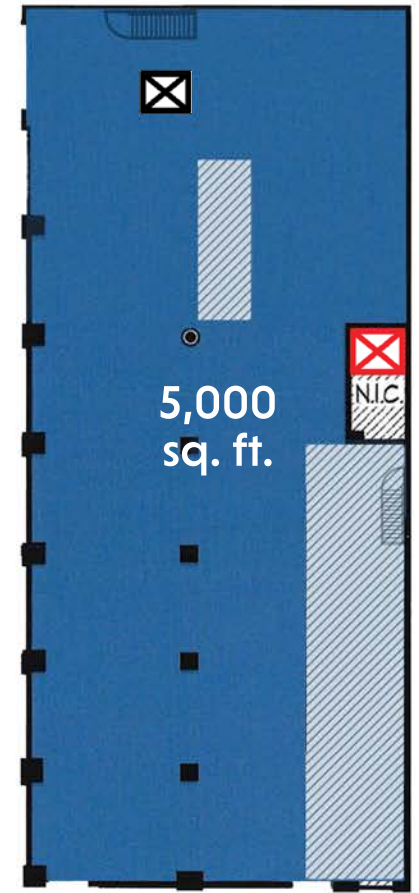
Ground Floor



Lower Level



Sub-Basement



## KEY:

 Elevator

 Internal Lift Option

 Not Available



**Nancy Cibrano**  
NCIBRANO.REALTY@GMAIL.COM

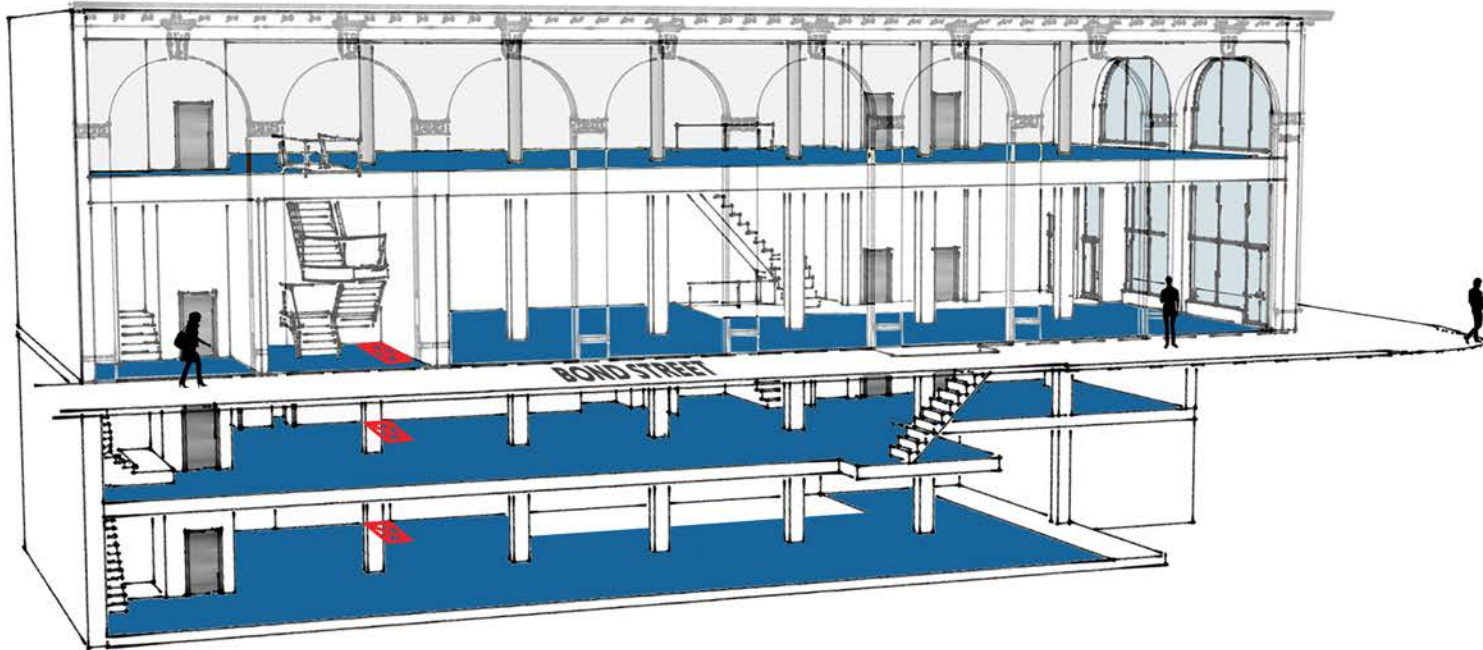
**Ariel Levy**  
ARIEL.LEVY@WINGSGROUP.COM

**212. 481. 7943**

# 666 BROADWAY

[entrances on Broadway and Bond Street]

info



<b>SIZE:</b>	<u>Sq. Ft.</u>	<u>Ceiling Height</u>
SECOND FLOOR	8,000	13'
GROUND FLOOR	6,000	16' 6"
LOWER LEVEL	6,500	12'
SUB-BASEMENT	5,000	9'

- TERMS:**
- Possession Immediate
  - Rent Upon Request

**FRONTAGE:**

BROADWAY:	50'
BOND STREET:	120'

- NOTES:**
- Multiple Entrances and Egresses
  - Passenger/Freight Elevators and Internal Lift Option
  - Abundance of Signage and Visibility
  - Divisions Considered



**Nancy Cibrano**  
NCIBRANO.REALTY@GMAIL.COM

**Ariel Levy**  
ARIEL.LEVY@WINGSGROUP.COM

**212. 481. 7943**