

Hunts Point Marketplace aka 910 Hunts Point Avenue - Up to 4,000 SF



Artist's Rendering

910 Hunts Point Avenue, Bronx, NY

AVAILABLE (REASONABLE DIVISIONS CONSIDERED)

4,070 SF + 150 SF Cellar

RENT

Upon request

(No real estate tax excalations in connection with this property)

FRONTAGE

135 FT on Hunts Point Avenue

45 FT on Bruckner Boulevard

COMMENTS

- ◆ Located at the gateway to Hunts Point at the interesection of Hunts Point Avenue and Bruckner Boulevard
- ◆ The Cass Gilbert-designed structure features a 16' high arched ceiling (architect of Lower Manhattan's iconic Woolworth Building)
- ◆ Hunts Point is home to over 12,000 residents
- ◆ Over 14,000 mobile devices per day pass this site
- ◆ Large public parking lot located directly across the street
- ◆ Accessible via 2 5 6 subways, Bruckner Boulevard and the Sheridan Expressway
- ◆ A redevelopment by Majora Carter Associates LLC and Slayton Ventures
- ◆ Ideally suited for either dry-use retail or quick-serve restaurant (QSR)

EXCLUSIVE LEASING AGENT:

MARK TERGESEN

212-400-9528 mtergesen@absre.com

JOSEPH ITALIAANDER

212-400-9517 jitaliaander@absre.com

JOHN BROD

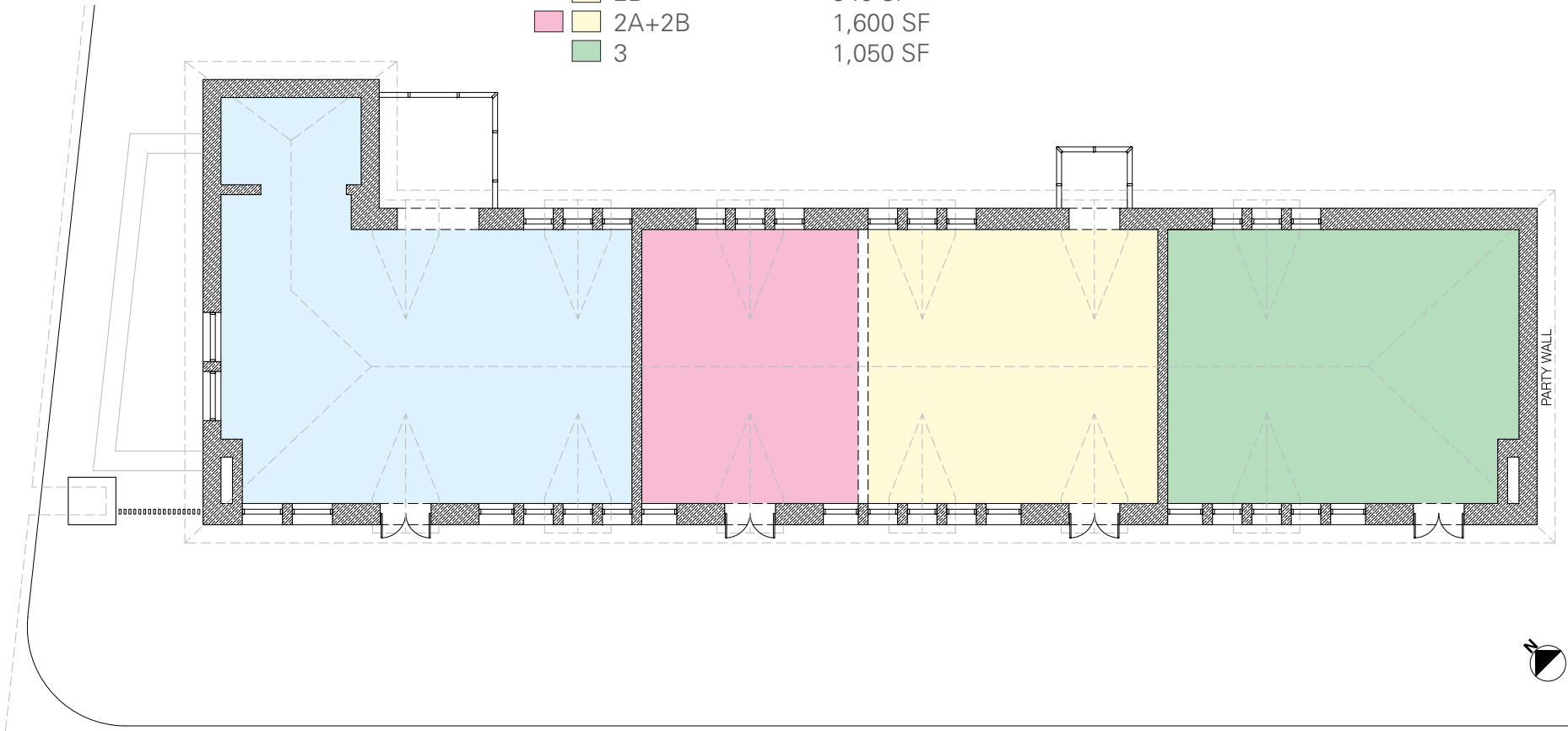
212-400-9521 jbrod@absre.com



Entire Space
4,070 SF + 150 SF Cellar

Suggested Divisions

1	1,420 SF
2A	660 SF
2B	940 SF
2A+2B	1,600 SF
3	1,050 SF



EXCLUSIVE LEASING AGENT:

MARK TERGESEN
212-400-9528 mtergesen@absre.com

JOSEPH ITALIAANDER
212-400-9517 jitaliaander@absre.com

JOHN BROD
212-400-9521 jbrod@absre.com



"All information is from sources deemed reliable but is subject to errors or omissions of any magnitude, withdrawal from market, or changes in terms, all without notice. Brokers employment and payment only by written agreement."



The Crossings, Tenants include:



Hunts Point Marketplace

(aka 910 Hunts Point Avenue)

The Banknote Building

- 400,000 SF office complex
- 178,800 SF of private parking

Hunts Point Food & Produce Market

- 60 acre market which is the largest food distribution center of its kind in the world
- Over \$2 billion of revenue annually

Spofford Detention Center Development

- 740 unit mixed use project
- Developed by Hudson Companies & Gilbane Development Company

MTA Metro-North Railroad
Planned New Hunts Point Station

Planned New Hunts Point Metro-North Station

- Funding for a new East Bronx stations along Amtrak's New Haven Line was approved in May 2016 – Hunts Point, Parkchester, Morris Park and Co-op City
- \$695 Million has been apportioned for the project as part of the MTA's \$27 billion Capital Program
- \$250 Million in funding for the project was included in New York State's 2015-16 budget by Governor Cuomo
- The new stations are expected to reduce commuting times for over 93,000 residents from the eastern section of the Bronx; provide easy access to jobs up and down the New Haven line and to Penn Station; and serve one of the largest concentrations of medical facilities in the U.S. at the Morris Park Station.

Hunts Point Marketplace

(aka 910 Hunts Point Avenue)



New Hunts Point Station - Rendering

Exclusive Leasing Agent:

MARK TERGESEN

212-400-9528

mtergesen@absre.com

JOSEPH ITALIAANDER

212-400-9517

jitaliaander@absre.com

JOHN BROD

212-400-9521

jbrod@absre.com

