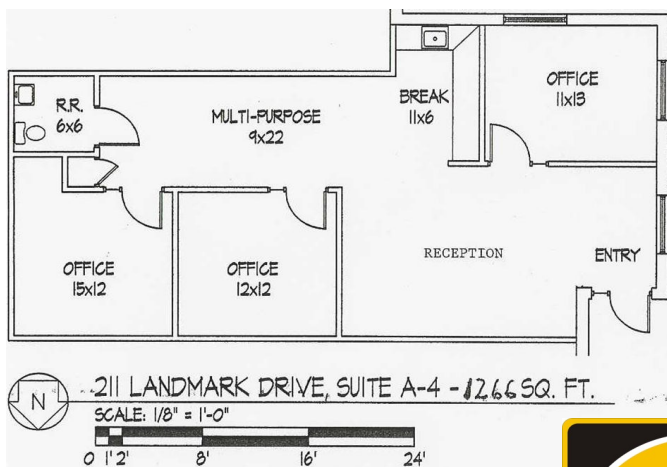


# Executive Office Space Available 211 Landmark Drive — Normal, IL

**LEASE PRICE  
REDUCED**



## PROPERTY DETAILS

- **Space Available:** 1,266\* sq. ft.
- **Building Size:** 5,748\* sq. ft.
- **Lease Rate:** ~~\$1,500~~/mo. (Mod. Gross)  
\$1,300/mo.
- **Zoning:** B-1
- **Office Park Setting - Outside Entrance**
- **Off Street Parking**

\*approx.

**Greg Schrof**  
Broker  
309-825-0101  
greg@schrofcompanies.com



**Pam Schrof Rieger**  
Managing Broker  
815-250-4027  
pam@schrofcompanies.com

"Selling your Business  
...is our business"

www.schrofcommercial.com  
2303 E. Washington—Suite 5-A — Bloomington, IL 61704

Registered Business Brokers  
Real Estate Services  
Property Management