



Property Specifications

- Location:** 801 N. Circle Drive
Colorado Springs, CO 80909
- Lot Size:** 2.59 Acres
- Building Size:** +/- 40,000 SF
- Sale Price:** \$2,500,000
- Lease Rate:** \$5.50, NNN
- Parking Spaces:** +/- 226
(170 onsite and 56 at CSU)

Map

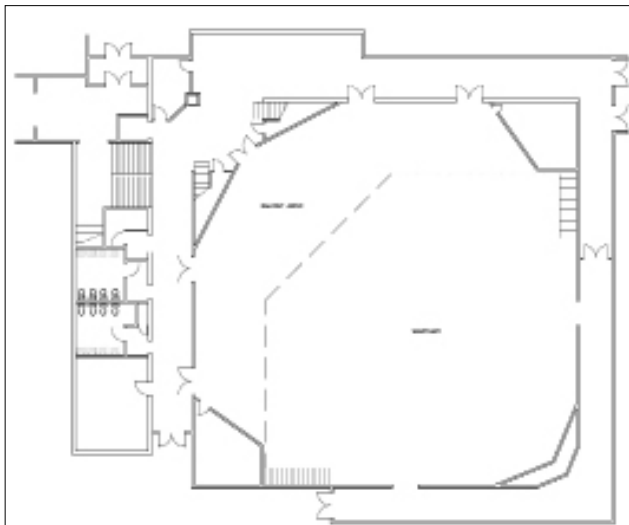


John Rodgers, CCIM • President • john.rodgers@peakcp.net • 719.227.9988

Michael D. Stuard • Commercial Broker • Mike@RE4Business.com • 719.338.9566

FOR SALE / LEASE

801 N. Circle Drive • Colorado Springs, CO



PRIMARY SANCTUARY
(SEATS 850-950)



YOUTH PROGRAMS

** Additional floor plans available upon request*