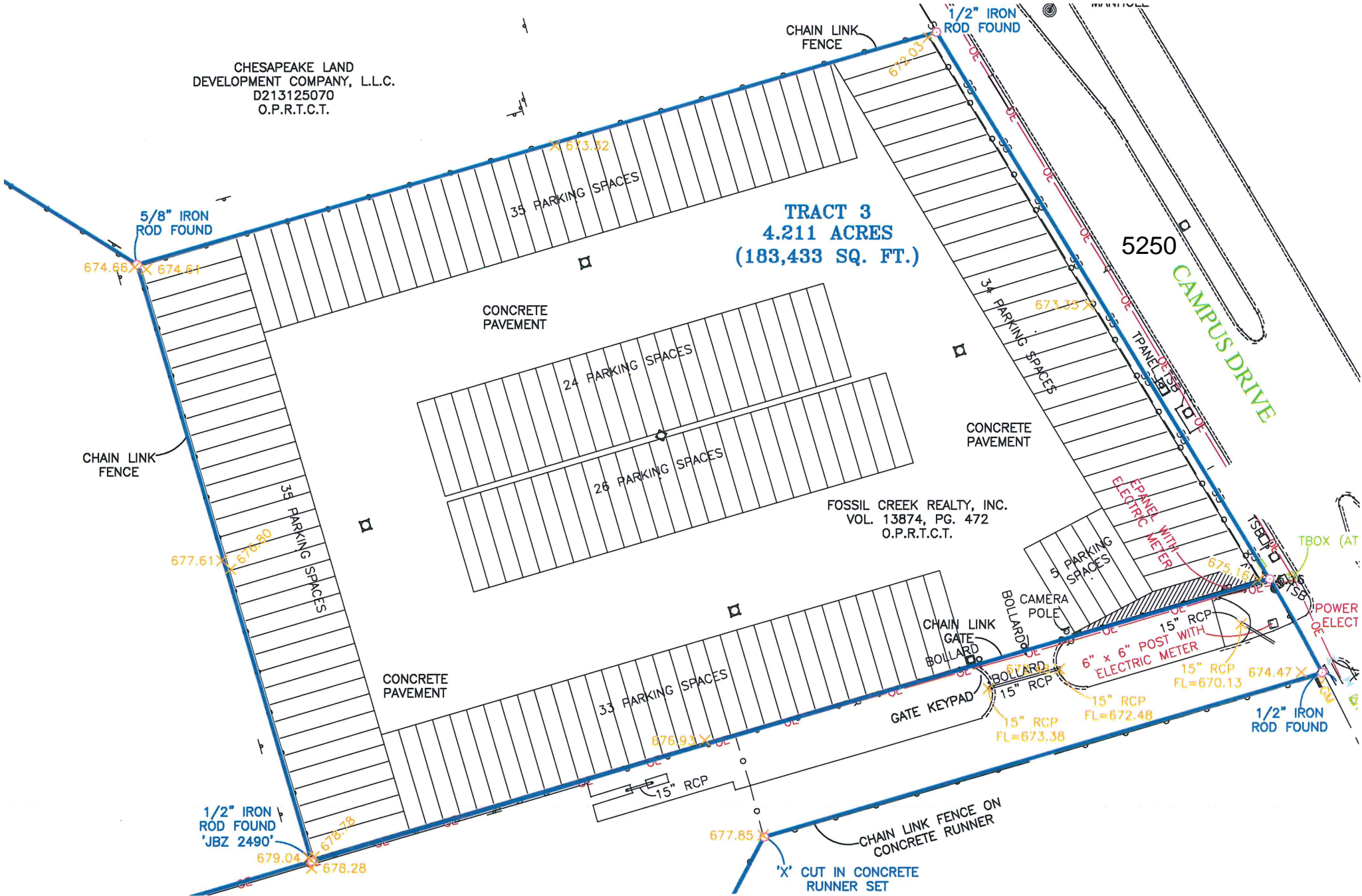


CHESAPEAKE LAND
DEVELOPMENT COMPANY, L.L.C.
D213125070
O.P.R.T.C.T.

TRACT 3
4.211 ACRES
(183,433 SQ. FT.)

FOSSIL CREEK REALTY, INC.
VOL. 13874, PG. 472
O.P.R.T.C.T.

5250
CAMPUS DRIVE



5/8" IRON
ROD FOUND

CHAIN LINK
FENCE

1/2" IRON
ROD FOUND

674.66 X 674.81

673.52

35 PARKING SPACES

CONCRETE
PAVEMENT

24 PARKING SPACES

26 PARKING SPACES

CHAIN LINK
FENCE

35 PARKING SPACES

677.61 X 676.80

CONCRETE
PAVEMENT

33 PARKING SPACES

676.93

1/2" IRON
ROD FOUND
'JBZ 2490'

679.04 X 678.28

677.85

'X' CUT IN CONCRETE
RUNNER SET

CHAIN LINK
GATE
BOLLARD

GATE KEYPAD

BOLLARD

CAMERA
POLE

15" RCP

15" RCP
FL=673.38

15" RCP
FL=672.48

15" RCP
FL=670.13

6" x 6" POST WITH
ELECTRIC METER

674.47 X

1/2" IRON
ROD FOUND

CONCRETE
PAVEMENT

34 PARKING SPACES

673.35 X

672.03

5250

CAMPUS DRIVE

ELECTRIC METER

675.18 X

674.28 X

674.02 X

674.02 X

674.02 X

674.02 X

674.02 X

674.02 X

674.02 X

674.02 X

674.02 X

674.02 X

674.02 X

TBOX (AT

POWER
ELECT

15" RCP

15" RCP

15" RCP

15" RCP

15" RCP

15" RCP

15" RCP

15" RCP

15" RCP

15" RCP

15" RCP

15" RCP

15" RCP

15" RCP

15" RCP

15" RCP

15" RCP