

## 10 Acres on Wolf Lane

7145 Wolf Lane #G, Del Valle, TX 78617



**Allan Hanson**

Berkshire Hathaway Home Services Texas Realty  
 3303 Northland Dr, Suite 100, Austin, TX 78731  
[allan.hanson@bhhstxrealty.com](mailto:allan.hanson@bhhstxrealty.com)  
 (512) 417-5713

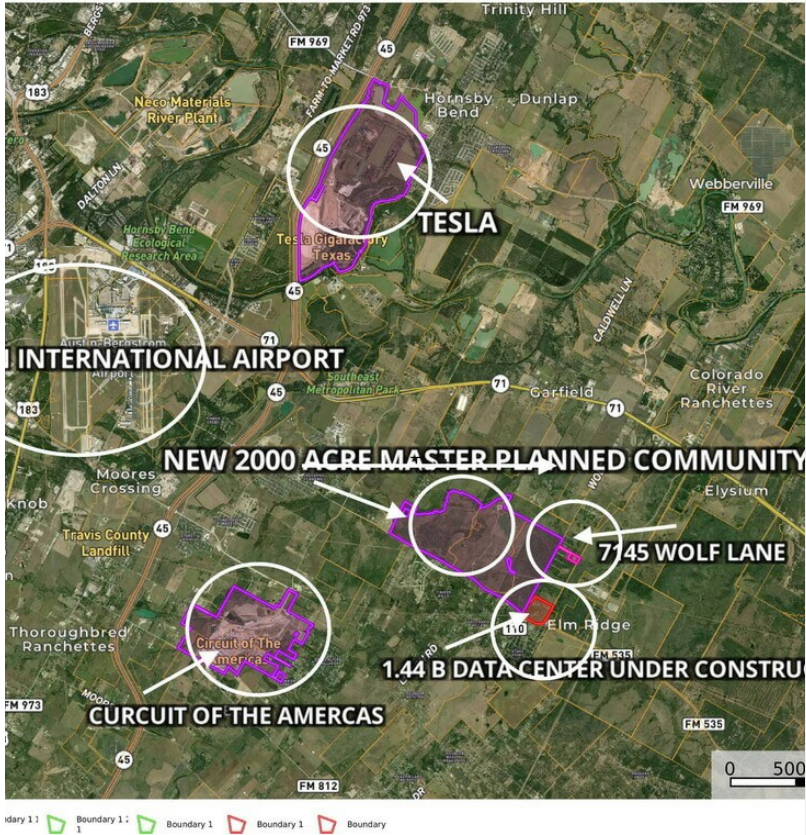
# 10 Acres on Wolf Lane

\$800,000

1.44 BILLION \$ DATA CENTER Construction fueling growth in the immediate area. Make a strategic investment and park your money in this money now before prices increase! Suitable for INDUSTRIAL, COMMERCIAL DEVELOPMENT and OWNER-USER DEVELOPMENT. 10 MILES from the Austin Airport, just 5 miles from COTA (Circuit of the Americas), 2.5 miles from SH 71 and minutes from the Tesla Giga-factory....

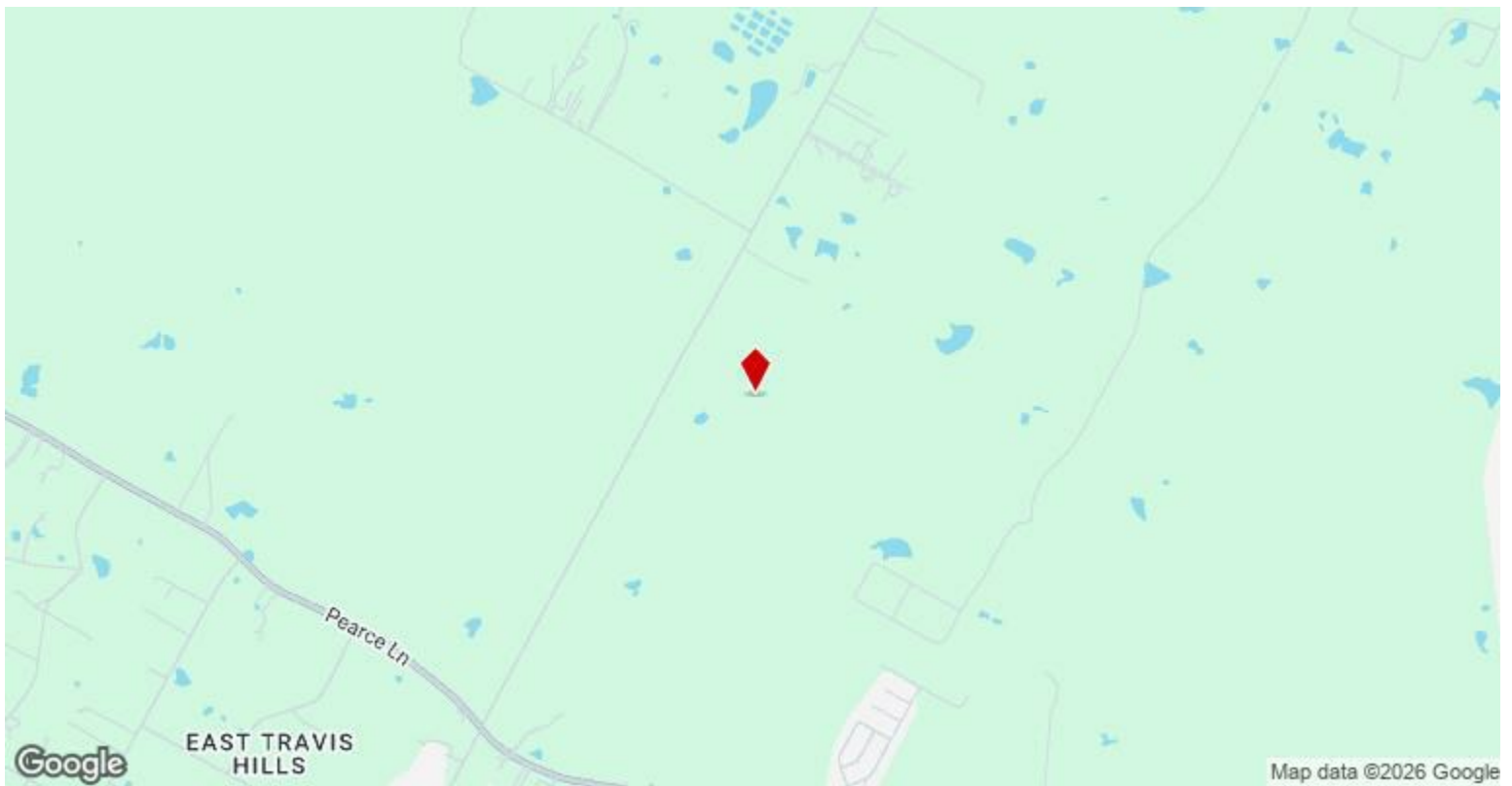
1.44 BILLION \$ DATA CENTER Construction fueling growth in the immediate area. Make a strategic investment and park your money in this money now before prices increase! Suitable for INDUSTRIAL, COMMERCIAL DEVELOPMENT and OWNER-USER DEVELOPMENT. 10 MILES from the Austin Airport, just 5 miles from COTA (Circuit of the Americas), 2.5 miles from SH 71 and minutes from the Tesla Giga-factory....

- Near New Billion Dollar Data Center
- Near Hwy 71 and Airport
- Near Tesla Giga-Factory
- Commercial or Industrial Use



Price:	\$800,000
Property Type:	Land
Property Subtype:	Industrial
Proposed Use:	Commercial
Sale Type:	Investment or Owner User
Total Lot Size:	10.01 AC
Sale Conditions:	[object Object]
No. Lots:	1
Zoning Description:	No Zoning - in ETJ
APN / Parcel ID:	948190





## 7145 Wolf Lane #G, Del Valle, TX 78617

1.44 BILLION \$ DATA CENTER Construction fueling growth in the immediate area. Make a strategic investment and park your money in this money now before prices increase! Suitable for INDUSTRIAL, COMMERCIAL DEVELOPMENT and OWNER-USER DEVELOPMENT. 10 MILES from the Austin Airport, just 5 miles from COTA (Circuit of the Americas), 2.5 miles from SH 71 and minutes from the Tesla Giga-factory. LOW RESTRICTIONS to preserve property value, NO FLOOD PLAIN, NO HOA, NO ZONING because outside of city limits, water (Aqua Water), and electricity (Three Phase Electric) at the road. In Austin ETJ, has AG exemption... Amazing location with beautiful views of downtown Austin. This is your opportunity to own 10.010 acres, your own piece of Texas. low restrictions, NO ZONING, Verified NO FLOOD PLAIN! Approximately 10 miles to the new Tesla Giga-Factory, Circuit of the Americas, and the Austin Bergstrom International Airport. Ag exemption in place for low tax rates. Front 4 acres of the property are in Travis County with very low restrictions. Back 6 acres of property are in Bastrop.

# Property Photos



Flag Shape of Land



Boundary Photo of Tract

# Property Photos



Aerial View of Land - 3



Aerial View of Land

## Property Photos



Gentle Sloping Land