



To Let

Unit G3 & G4 (Under Construction)

Warehouse and Industrial — 4,500 sq ft (372 m²) to 31,850 sq ft (2,958 m²)

Available April 2018



A joint development by:



www.horizon38.com

Location—Phase B

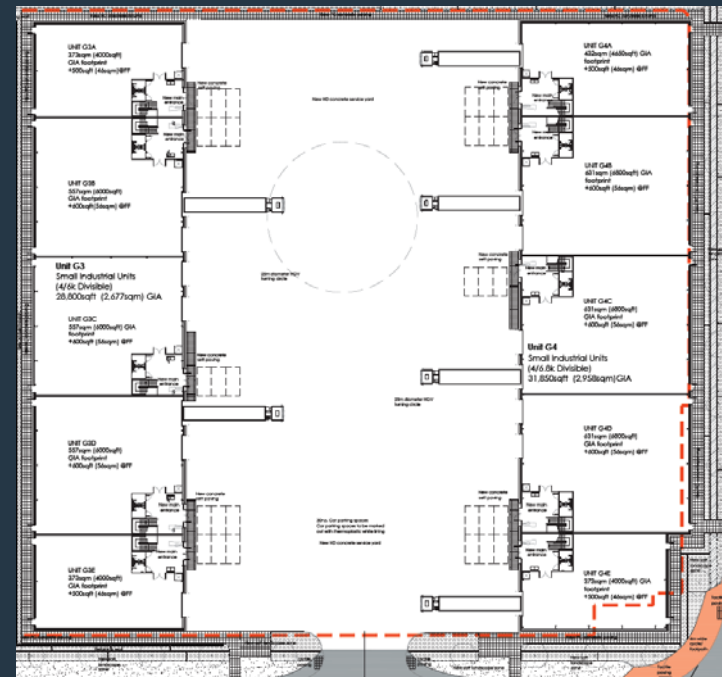


These buildings are available to occupy from October 2017 in units from 4,000 sq ft to 31,850 sq ft.

Unit G3 & G4

- Terrace of New Grade A units
- Height to u/s haunch 6.5m

Unit	Total Size	Mezzanine (inc. in total)
G3a	4,500 sq ft (418m ²)	500 sq ft (46m ²)
G3b	6,600 sq ft (613m ²)	600 sq ft (56m ²)
G3c	6,600 sq ft (613m ²)	600 sq ft (56m ²)
G3d	6,600 sq ft (613m ²)	600 sq ft (56m ²)
G3e	4,500 sq ft (418m ²)	500 sq ft (46m ²)
G4a	5,150 sq ft (478 m ²)	500 sq ft (46m ²)
G4b	7,400 sq ft (687m ²)	600 sq ft (56m ²)
G4c	7,400 sq ft (687m ²)	600 sq ft (56m ²)
G4d	7,400 sq ft (687m ²)	600 sq ft (56m ²)
G4e	4,500 sq ft (418m ²)	500 sq ft (46m ²)



For further information please contact:



Byron Hammond
0117 988 5229
Byron.hammod@gva.co.uk

Paul Hobbs
0117 988 5220
Paul.hobbs@gva.co.uk



Giles Weir
0117 930 5782
Giles.Weir@eu.jll.com

Henry De Teissier
0117 930 5603
Henry.DeTeissier@eu.jll.com

Property ref
gva.co.uk/9672
08449 02 03 04

A joint development by:

