

FOR SALE OR LEASE > OFFICE/SHOWROOM/SERVICE CENTER

# 1501 WOODSON ROAD

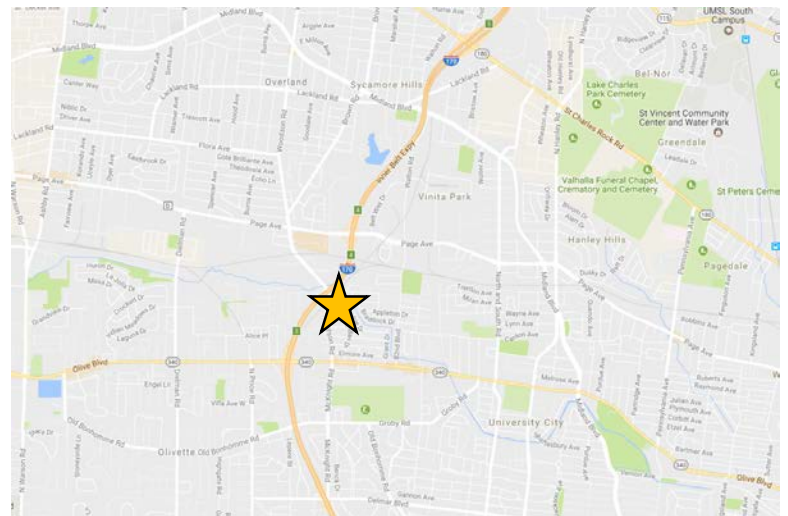


(a.k.a. 1 - 7 Document Drive) **ST. LOUIS, MO 63114**



## Property Features

- > 27,791 SF building
- > 2,656 to 18,586 SF available for lease
- > 4.5/1,000 SF parking ratio
- > Highway visibility to I-170
- > Central location
- > 5 minutes to Clayton CBD; 7 minutes to Lambert - St. Louis International Airport
- > **LEASE RATE:** \$11.50/SF, NNN (subject to tenant improvements)
- > **SALE PRICE:** Contact brokers for more information



## Contact Us

**DENNIS G. DESANTIS, SIOR, CRE**  
DIR +1 314 584 6253  
MOB +1 314 504 5353  
[Dennis.DeSantis@colliers.com](mailto:Dennis.DeSantis@colliers.com)

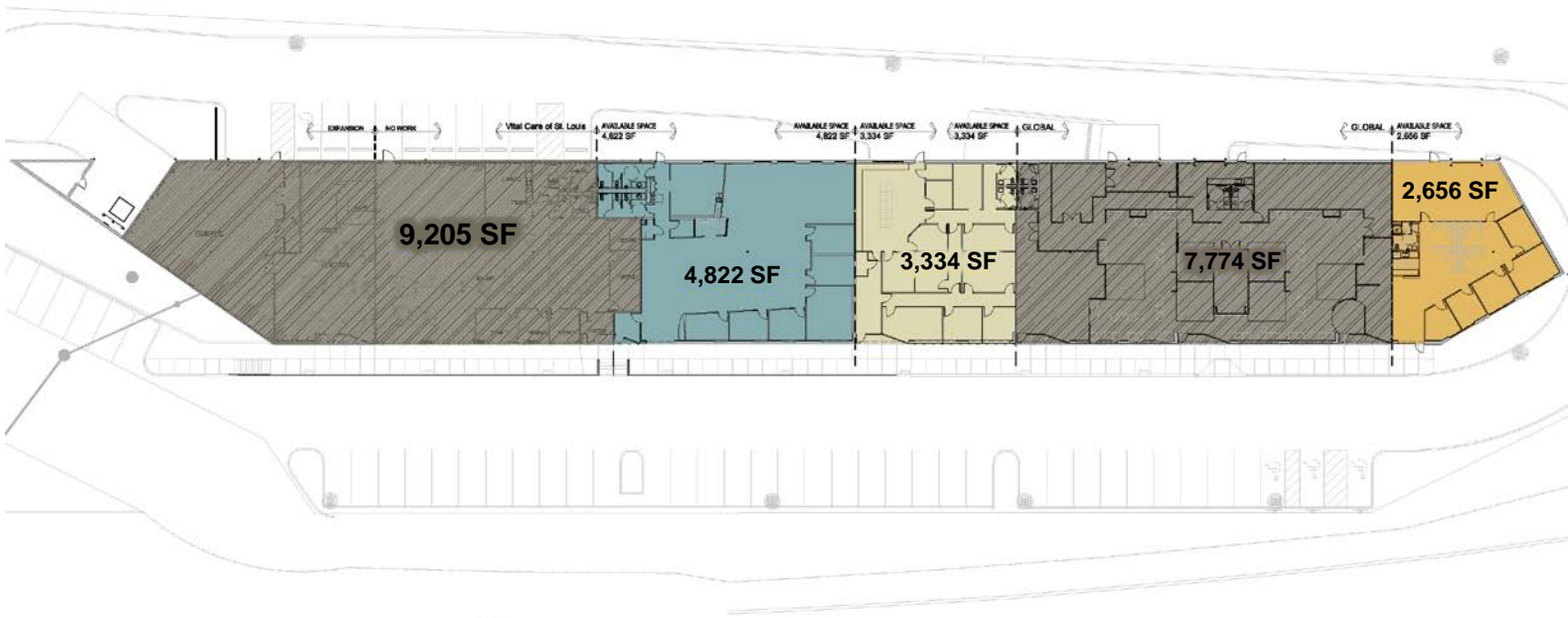
**JOSEPH S. HILL, CCIM**  
DIR +1 314 584 6213  
MOB +1 314 365 3529  
[Joseph.Hill@colliers.com](mailto:Joseph.Hill@colliers.com)

**COLLIERS | ST. LOUIS**  
101 South Hanley Road, Suite 1400  
St. Louis, MO 63105  
[www.colliers.com](http://www.colliers.com)

FOR SALE OR LEASE > OFFICE/SHOWROOM/SERVICE CENTER

# 1501 WOODSON ROAD

(a.k.a. 1 - 7 Document Drive) ST. LOUIS, MO 63114



1 Floor Plan  
1" = 16'-0"



Although all information furnished regarding property for sale, rental or financing is from sources deemed reliable, such information has not been verified, and no express representation is made nor is any to be implied as to the accuracy thereof, and it is submitted subject to errors, omissions, change of price, rental or other conditions, prior sale, lease or financing, or withdrawal without notice.

