



# Sheyenne Plaza

West Fargo, ND



## OFFICE SPACE AVAILABLE

### ADDRESS

444 Sheyenne Street, West Fargo, ND 58078

### PROPERTY DETAILS

Lease Rate	\$885+/Month
CAM	N/A
Total Space	45,000+ SF
Space Available	±300 SF
Lease Term	Month to Month
Year Built	2018
Style	Office/Retail

Subdivided space available. Details and rates are subject to change at any time. Contact for more information.

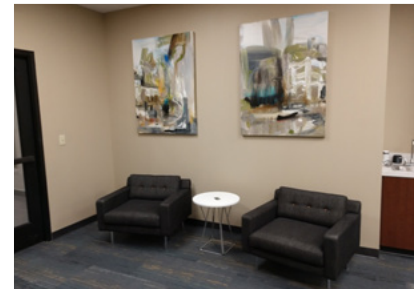
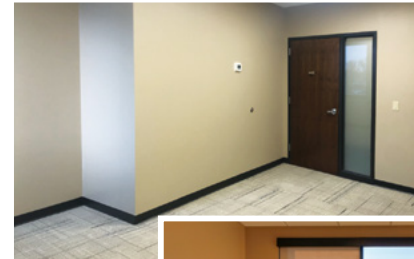
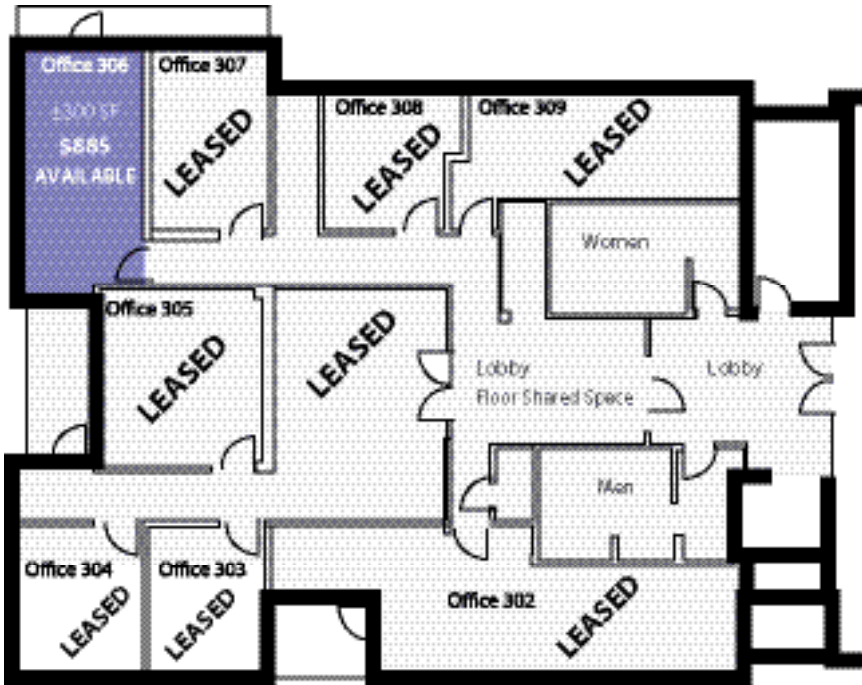
701.866.1006  
EPICCompaniesND.com





# Sheyenne Plaza PROJECT OVERVIEW

444 Sheyenne Street, West Fargo, ND 58078



## OVERVIEW

Sheyenne Plaza is a mixed-use center that caters to the growing demand for lifestyle communities, those that serve as multi-purpose environments where living, shopping, working, playing and socializing co-exist. This area has a built-in customer base with 22 residential units lofted above three levels of commercial space. The building has an attractive design in a prominent location with flexible space and allied services. Not only is Sheyenne Plaza modern in its design, but the offices offer several modern amenities, including guest wifi, parking, bathrooms and a modern styled lobby.

## NEIGHBORHOOD FEATURES

Population (No. of People)		
.5 mile	1 mile	3 miles
<b>3,469</b>	<b>10,774</b>	<b>43,073</b>

Business (No. of Businesses)		
.5 mile	1 mile	3 miles
<b>187</b>	<b>427</b>	<b>2,217</b>

Employees (No. of Employees)		
.5 mile	1 mile	3 miles
<b>1,866</b>	<b>4,941</b>	<b>39,415</b>

Source: ESRI Business Analysis



**Zach Frappier**

Director of Realty

701.388.6919 | Zach@EPICCompaniesND.com



BUY | SELL | INVEST  
**TRILOGY**  
REAL ESTATE  
LOCATED AT 1010 MAIN AVE FARGO, ND



Investment • Development • Management