

LEASE

OFFICE FOR LEASE ±300, 740, 785 SF ACROSS FROM UC BERKELEY



2288 FULTON STREET BERKELEY CA 94704

**\$2.75 PER SQ FT
PLUS PG&E**

ELEGANT OFFICES



Prime location small office space. Across from [UC Berkeley](#), 5-minute [walk to BART](#) and [DT Berkeley](#). Great [local eats](#).

- **Suite 307** - 3rd floor Office - ±740 SF, open space, conference room, furnished with tables and chairs
- **Suite 302A** - 3rd floor Office - ±300 SF, open space high ceiling, windows, hardwood floor
- **Suite 312** - 3rd floor Office - ±785 SF, open Space, two (2) offices, two (2) small offices, storage room, high ceilings with natural light from skylight, common area lobby



SUITE 307



SUITE 202



SUITE 302A

PHOTOS + FLOORS FOLLOW

Matt Gondak

510-450-1434

mgondak@mrecommercial.com

CA DRE No: 00832220

Jim Hoang

510-350-7346

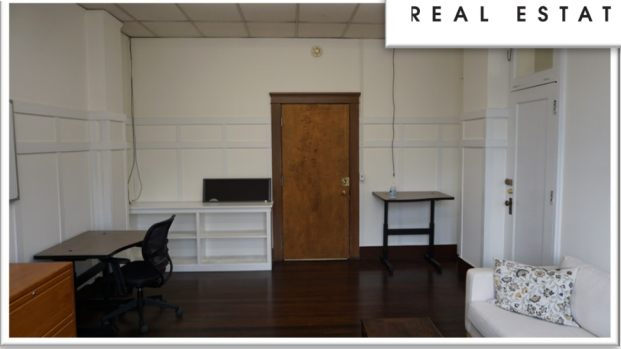
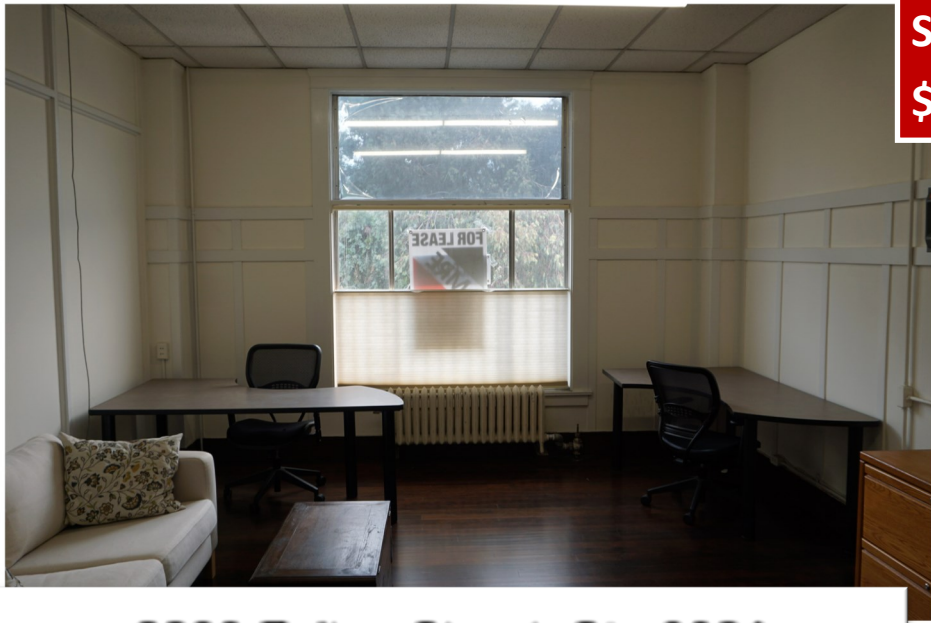
jhoang@mrecommercial.com

CA DRE No: 01949301



All information herein is offered in good faith and deemed accurate, but not guaranteed.

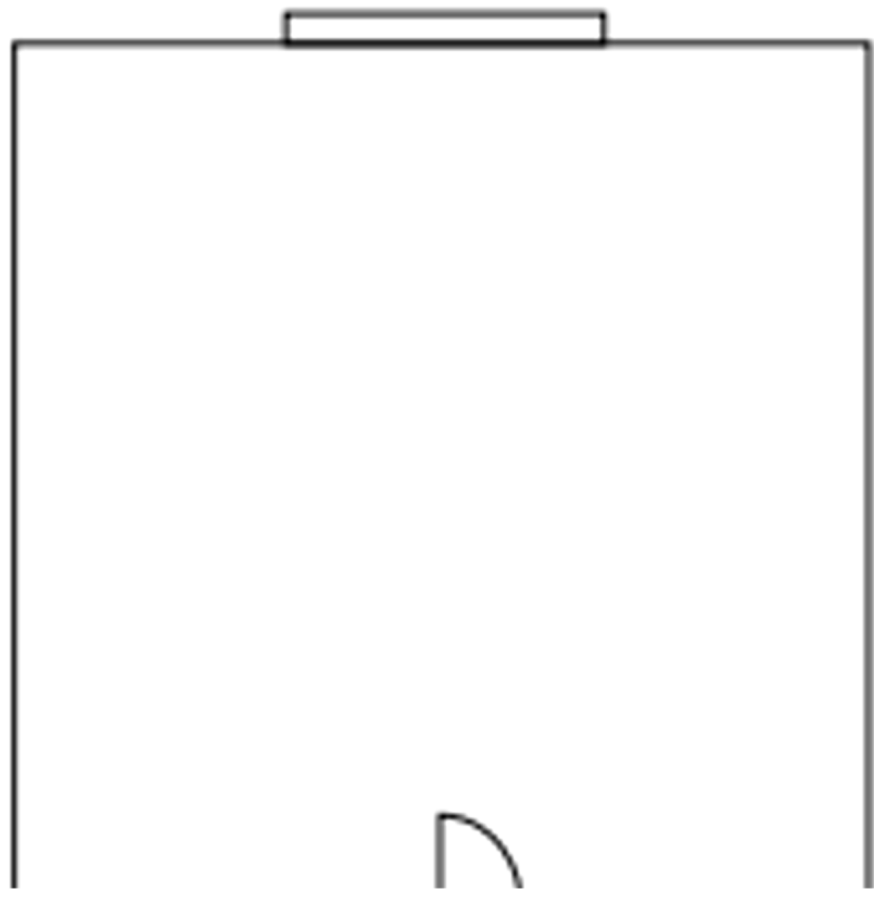
SUITE 302A, ±300 SF
\$2.75/ PSF + PGE



2288 Fulton Street, Ste 302A
Berkeley, CA

Approx. 300 sq.ft

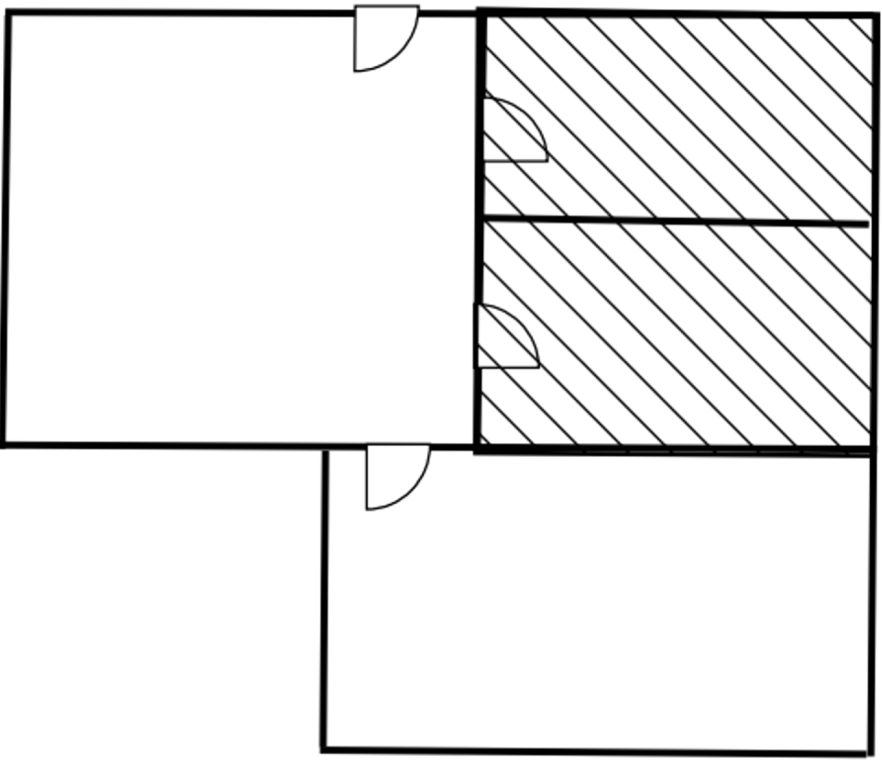
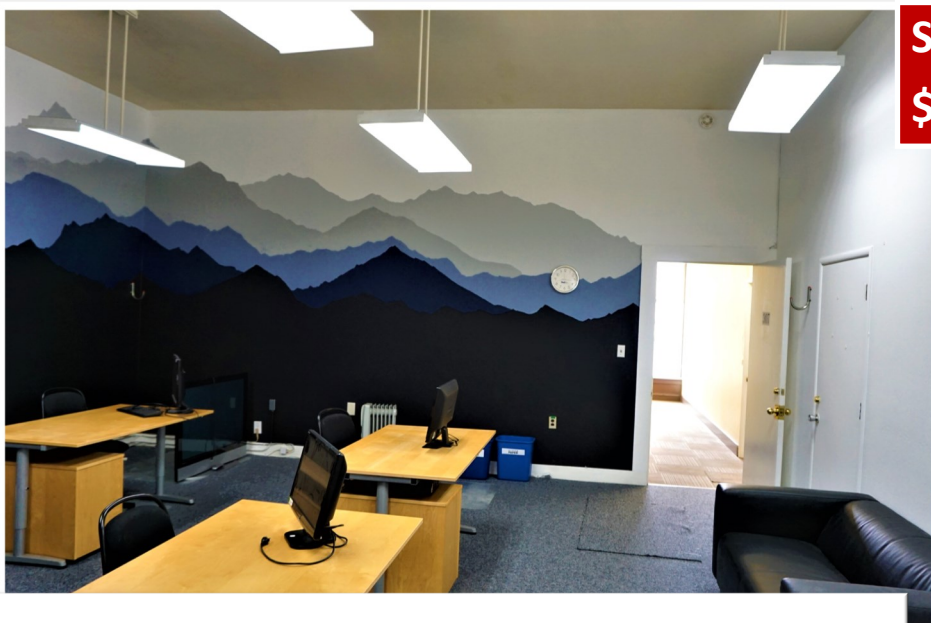
15x20



Features –

- Open space
- Nice window line with natural light
- Hardwood floor

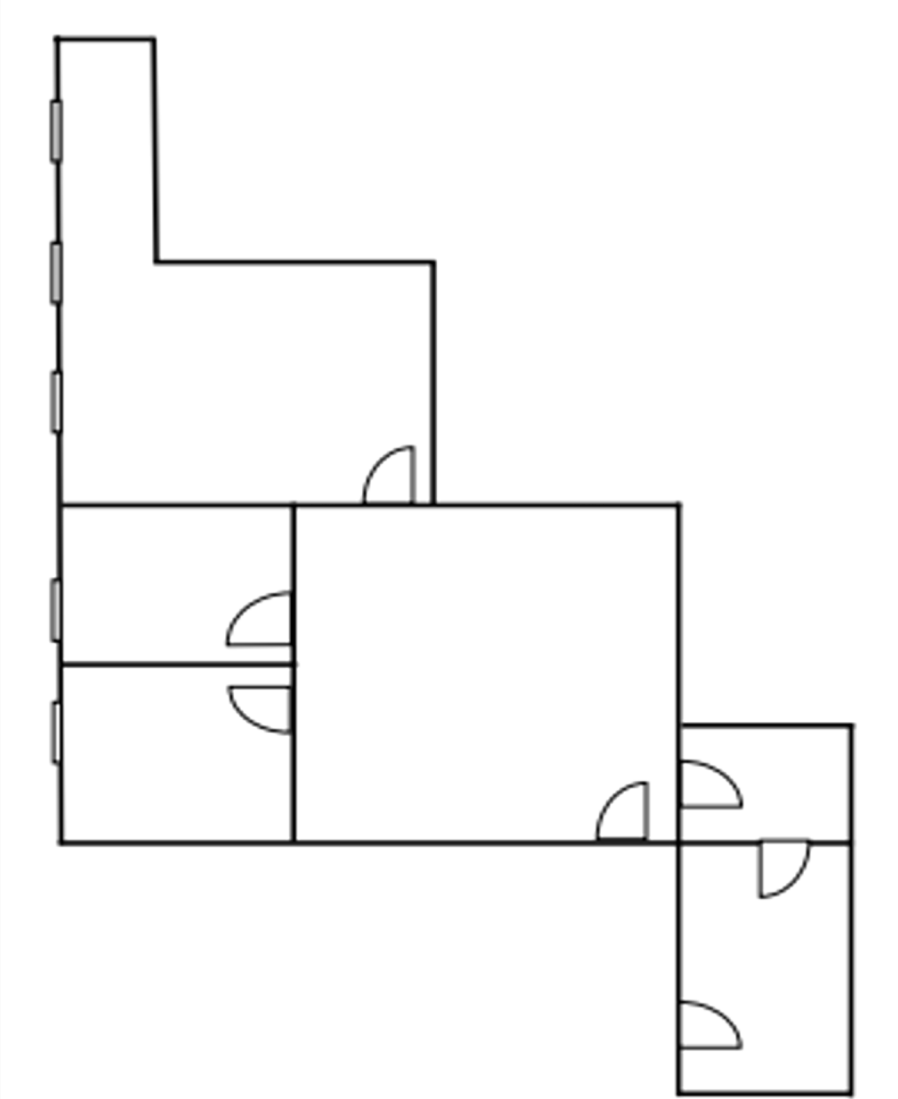
SUITE 307 ±740 SF
\$2.75/ PSF + PGE



2288 Fulton Street
Suite 307
Approximately 740 SF

- Features –
- Open space
 - Conference room
 - Furnished with tables

SUITE 312, ±785 SF
\$2.75/ PSF + PGE



2288 Fulton Street
Suite 312
Berkeley, CA
approximately 785 sq.ft

- Features:
- High ceilings with skylight
 - Open space
 - Two (2) offices
 - Two (2) small offices
 - Storage area
 - Common area lobby

All information herein is offered in good faith and deemed accurate, but not guaranteed.