

# OFFICE SPACE FOR LEASE

445 2nd Street W

Sonoma, CA 95476



COMPASS



Single-story, stand-alone building in the heart of Sonoma available for lease. Highly visible location just a block off Sonoma Plaza. Ideal for both office or retail. Features three office spaces, one ideal for break room with sink, plus restroom. Also offers a separate room for IT or extra storage. The off-street parking make this location a dream for client meetings or customers!

**Site Area:** 875 sf

**Structure:** stand alone single-story building

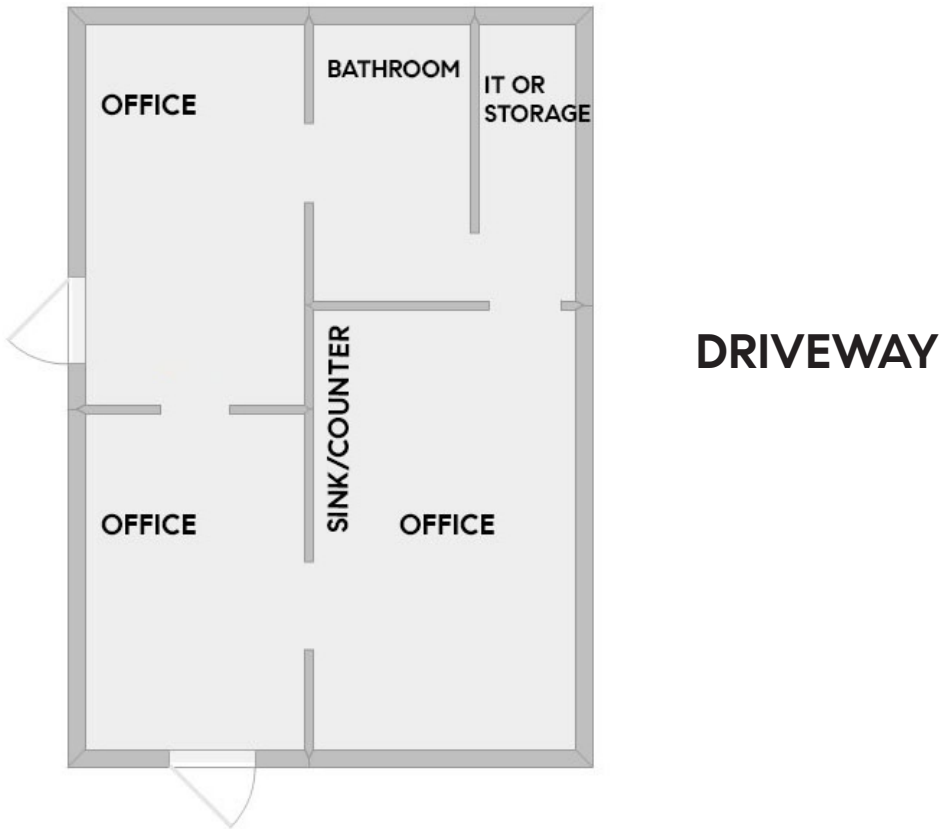
**Year Built:** 1937

**Rent:** \$2.50 SF

**Lease Type:** Modified Gross

**Parking:** On-site







445 2nd ST W | SONOMA, CA 95476

To Schedule A Showing Please Contact:

David Buurma | Compass Real Estate  
707.337.4328 | david.buurma@compass.com | License #01067966

Jessica Buurma | Compass Real Estate  
707.337.4140 | jessica.buurma@compass.com | License #01894213

