

FOR LEASE

±14,673 SF RETAIL BUILDING

237 E. Lancaster Ave | Wayne, PA 19087

NEGOTIABLE

PROPERTY FEATURES / HIGHLIGHTS

- ±14,673 SF Retail Building with Drive Thru Available
- Located at the signalized intersection of Lancaster Ave (Route 30) and N Aberdeen Ave
- Strong Traffic Counts: ±25,600 VPD on Lancaster Ave
- Former Rite Aid with 42 parking spaces
- Zoned WBOD (Wayne Business Overlay District)



DEMOGRAPHICS

1 MILE

3 MILE

5 MILE

TOTAL POPULATION

10,878

59,581

169,473

MEDIAN HHI

\$149,603

\$133,336

\$119,578

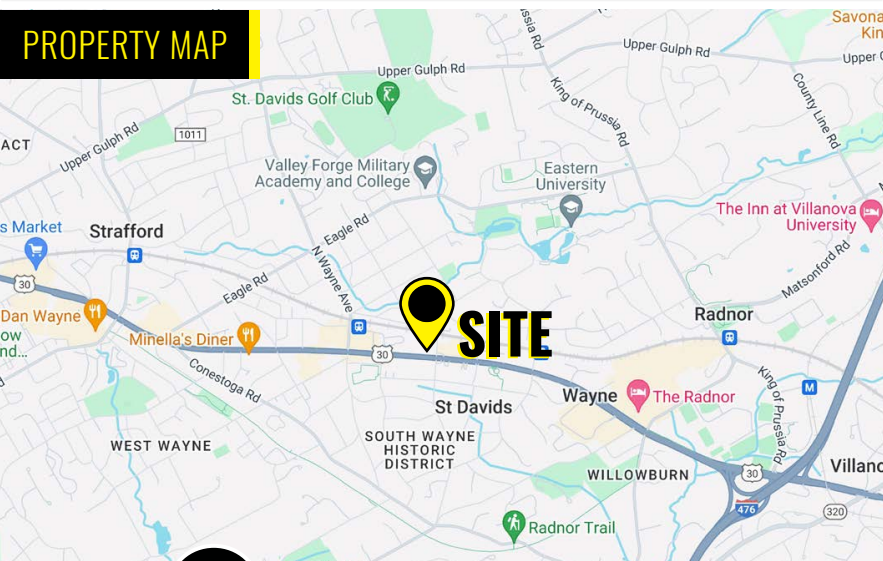
TOTAL HOUSEHOLDS

3,576

21,085

66,482

PROPERTY MAP



DRONE OVERVIEW PHOTO

237 E. LANCASTER AVE | WAYNE, PA 19087

FOR LEASE



SITE

N Aberdeen Ave

sweetgreen

Bank of America

Lancaster Ave ±25,600 VPD

Fulton Bank

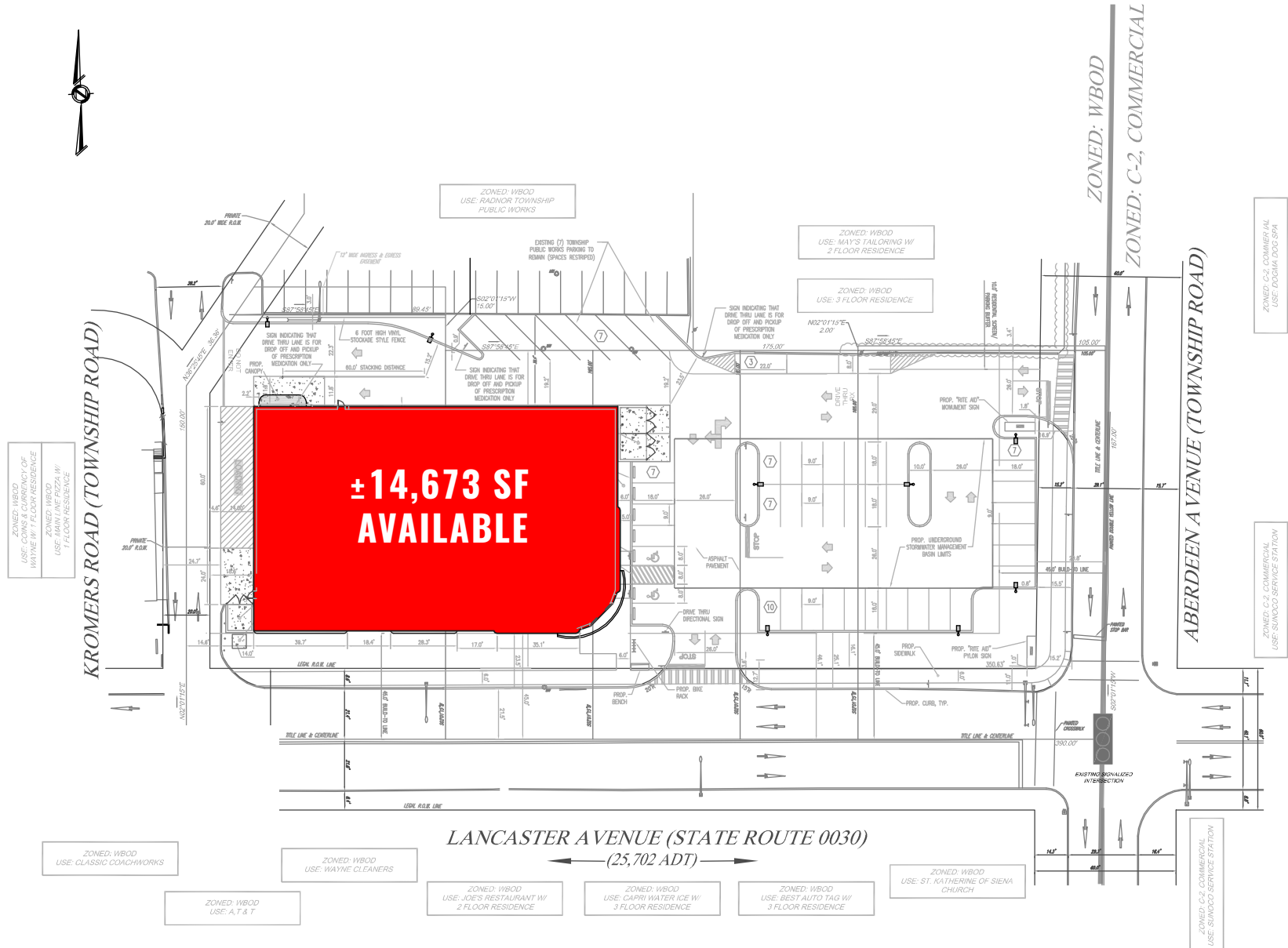
WAYNE HOTEL

TOMPKINS
BANKING | INSURANCE | WEALTH

Waynewood Ave



±14,673 SF RETAIL BUILDING AVAILABLE FOR LEASE



MARKET LOCATION AERIAL

237 E. LANCASTER AVE | WAYNE, PA 19087

FOR LEASE



ABOUT ZOMMICK MCMAHON COMMERCIAL REAL ESTATE

Zommick McMahon Commercial Real Estate, Inc. has been a Metro Philadelphia Area staple since its inception in 1949. The Company was founded by Joseph Zommick, and continues today with Ryan McMahon and his highly experienced staff. We are much more than just a real estate brokerage firm – we are a team of experienced, consummate professionals who are dedicated to superb customer service. Partner with us for support from some of the top commercial brokers in Pennsylvania, New Jersey and Delaware.

SOME OF OUR SATISFIED CLIENTS



IRON HILL
BREWERY & RESTAURANT

