

FOR SALE

# 1213 INTERNATIONAL BLVD

BURLINGTON, ON

LOTS FROM 3 TO 11.29 AC.



- + \$895,000 per acre
- + Lots from  $\pm 3$  to 11.29 acres available (subject to severance)
- + Located in Sheldon Creek Business Park
- + Development ready, services in place at street
- + GE1 zoning
- + Surrounded by "A" class office towers and new generation prestige industrial



## CONTACT US

### JONATHAN LEARY\*

Vice President  
+1 905 315 3695  
jonathan.leary@cbre.com

### MIKE MERRY\*

Senior Vice President  
+1 905 315 3690  
mike.merry@cbre.com

\*Sales Representative

[www.cbre.ca](http://www.cbre.ca)

**CBRE**

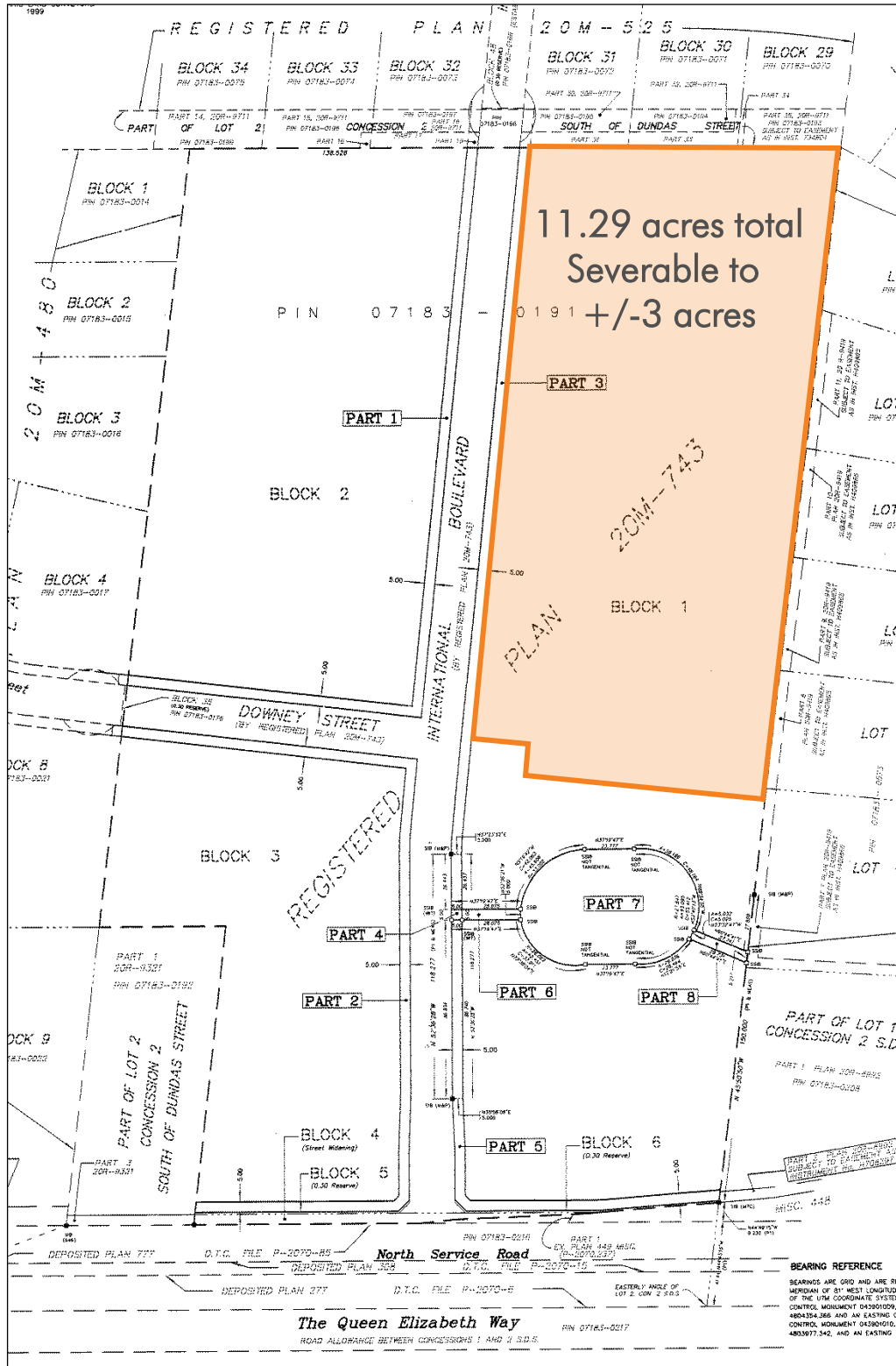
\*\*Lot lines approximate

# FOR SALE 1213 INTERNATIONAL BLVD

Burlington, ON

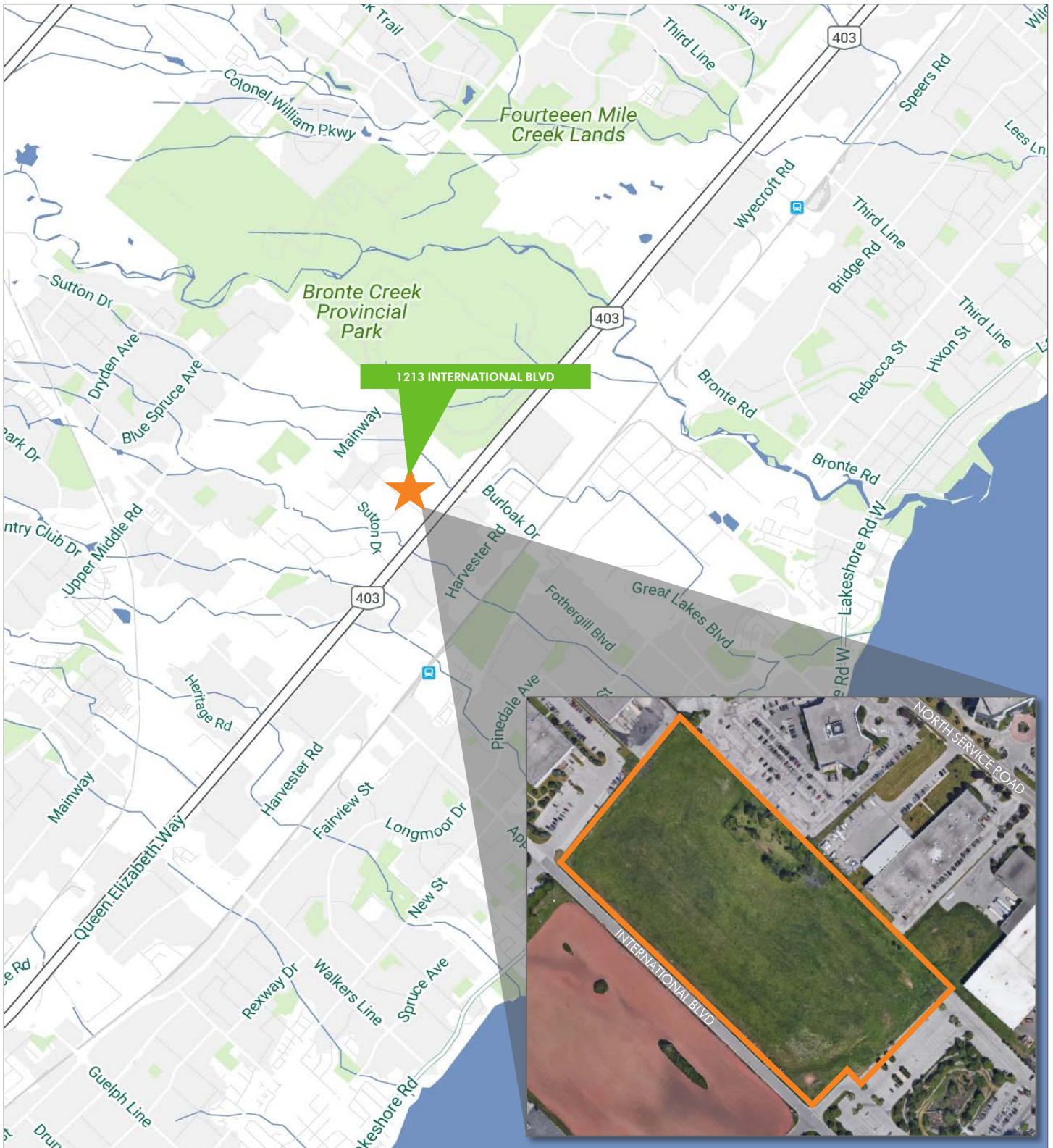


## SITE PLAN



# FOR SALE 1213 INTERNATIONAL BLVD

Burlington, ON



This disclaimer shall apply to CBRE Limited, Real Estate Brokerage, and to all other divisions of the Corporation ("CBRE"). The information set out herein, including, without limitation, any projections, images, opinions, assumptions and estimates obtained from third parties (the "Information") has not been verified by CBRE, and CBRE does not represent, warrant or guarantee the accuracy, correctness and completeness of the Information. CBRE does not accept or assume any responsibility or liability, direct or consequential, for the Information or the recipient's reliance upon the Information. The recipient of the Information should take such steps as the recipient may deem necessary to verify the Information prior to placing any reliance upon the Information. The Information may change and any property described in the Information may be withdrawn from the market at any time without notice or obligation to the recipient from CBRE. CBRE and the CBRE logo are the service marks of CBRE Limited and/or its affiliated or related companies in other countries. All other marks displayed on this document are the property of their respective owners. All Rights Reserved.  
Mapping Sources: Canadian Mapping Services [canadamapping@cbre.com](mailto:canadamapping@cbre.com); DMTI Spatial, EnviroNics Analytics, Microsoft Bing, Google Earth

# CBRE

\*Lot lines approximate