

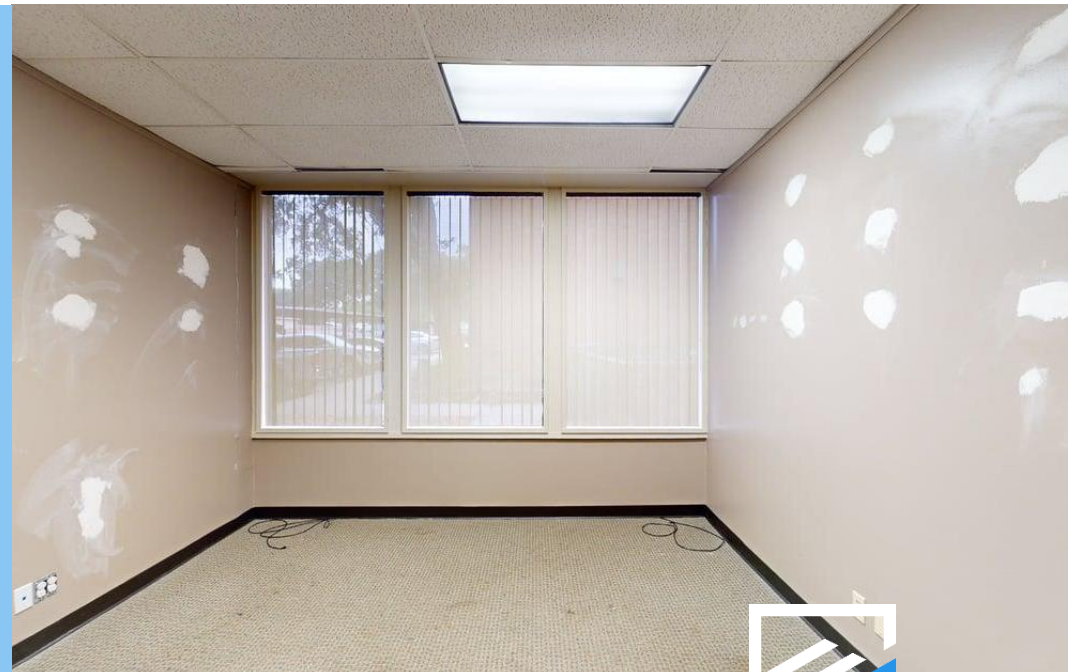
SUITE 192 – W | 1,611 SF

Located at 6800 Park Ten Blvd, Suite 192-West in San Antonio, Texas, this 1,611 SF office suite offers a flexible layout ideal for a variety of professional users. The single-story suite features seven rooms with a combination of private offices and open work areas designed to support efficient day-to-day operations. Large exterior windows with vertical blinds provide abundant natural light and views of the surrounding Park Ten corridor. Interior finishes include loop-pile carpeting, suspended drop ceilings with recessed fluorescent lighting, and wood-finish interior doors throughout. Select spaces feature unique design elements such as a vibrant teal accent wall and exposed brick column detail that add character to the professional setting. Currently vacant and in shell condition, the suite offers an excellent opportunity for tenant customization and build-out flexibility.

For leasing information or to schedule a tour, please contact Yvonne Elizondo.

SPACE HIGHLIGHTS

- 1,611 SF Office Suite
- Flexible 7-Room Layout
- Natural Light Throughout
- Exposed Brick Accent
- Shell Condition Space
- Custom Build-Out Potential



SUITE 192 – W | 1,611 SF



6800 Park Ten Blvd | Suite 192 - West



Explore 3D Space

POWERED BY

