



Towne Plaze

1001 TOWNE AVE, LOS ANGELES, CA 90021

FOR LEASE



Availabilities

Floor	Type	RSF	Lease Rate/Mo.
#1	Retail	2,302 RSF	\$4.50/SF
#2	Retail	852 RSF	\$2,130
#4	Office	2,994 RSF	\$10,479
#106	Retail	2,302 RSF	\$4.50/SF
#108	Retail	2,183RSF	\$4.50/SF
#112	Retail	1,070 RSF	\$4.50/SF
#113	Retail	976 RSF	
#117		976 RSF	
#118		976 RSF	
#208		481 RSF	\$2.50/SF
#212		447 RSF	\$2.50/SF
#215		852 RSF	\$2.50/SF
#401		2,994 RSF	\$3.50/SF

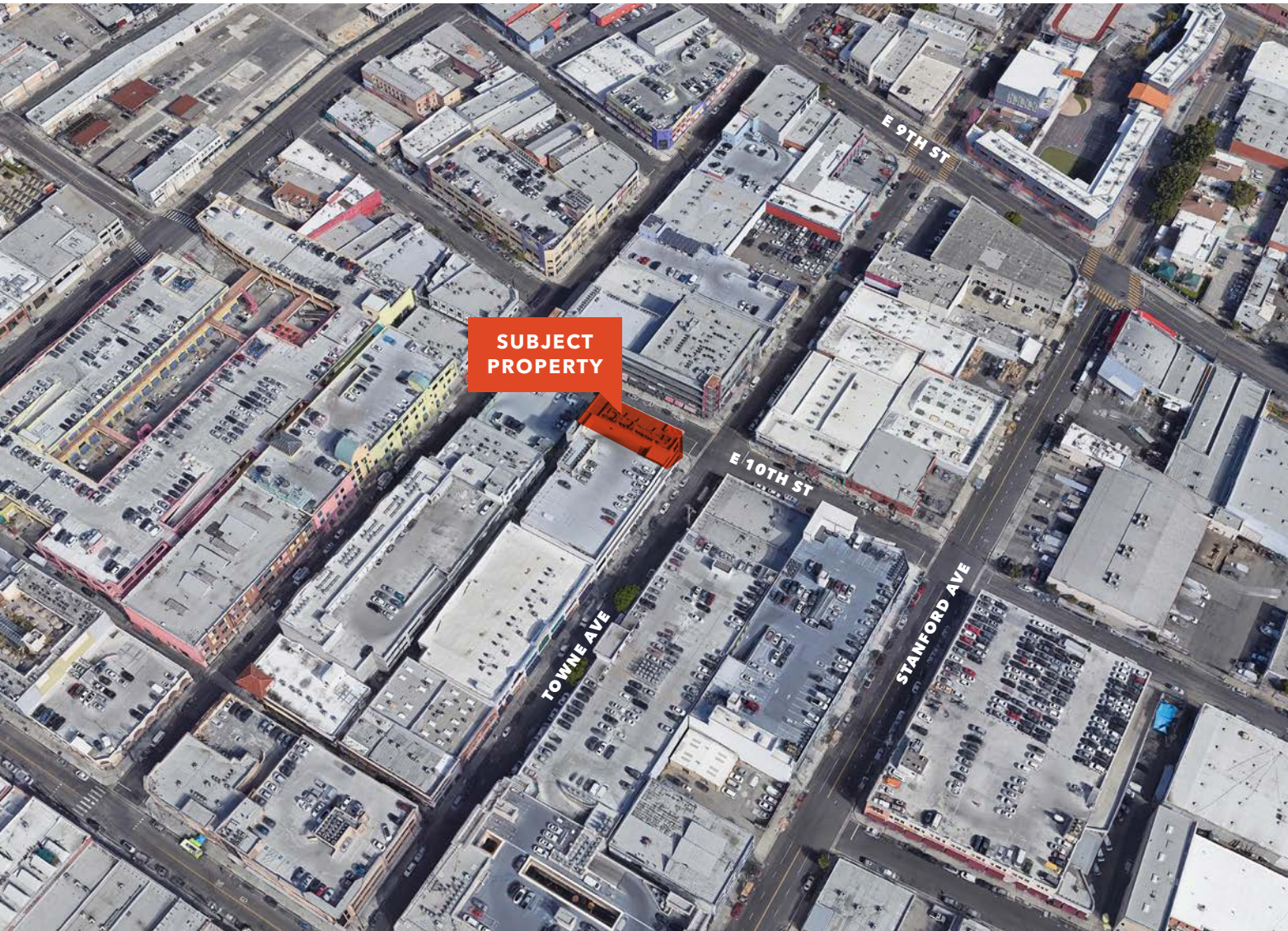
ROBERT AN
 213.225.7227
 robert.an@kidder.com

LIC N° 01184792

FOR LEASE

1001 Towne Ave

LOS ANGELES, CA 90021



BUILDING HIGHLIGHTS

- 447-2,994 SF** available
- LEASE RATE** varies per floor
- 2005** construction retail space
- M2-D2** zoning
- FULLY** sprinklered

ROBERT AN
213.225.7227
robert.an@kidder.com
LIC N° 01184792

KIDDER.COM

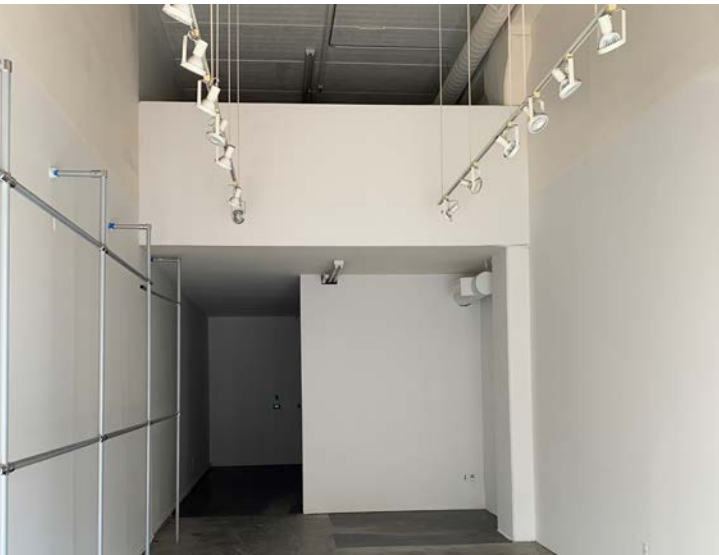
This information supplied herein is from sources we deem reliable. It is provided without any representation, warranty, or guarantee, expressed or implied as to its accuracy. Prospective Buyer or Tenant should conduct an independent investigation and verification of all matters deemed to be material, including, but not limited to, statements of income and expenses. Consult your attorney, accountant, or other professional advisor.



FOR LEASE

1001 Towne Ave

LOS ANGELES, CA 90021



ROBERT AN
213.225.7227
robert.an@kidder.com
LIC N° 01184792

KIDDER.COM

This information supplied herein is from sources we deem reliable. It is provided without any representation, warranty, or guarantee, expressed or implied as to its accuracy. Prospective Buyer or Tenant should conduct an independent investigation and verification of all matters deemed to be material, including, but not limited to, statements of income and expenses. Consult your attorney, accountant, or other professional advisor.

