

**DOWNTOWN OFFICE SPACE**

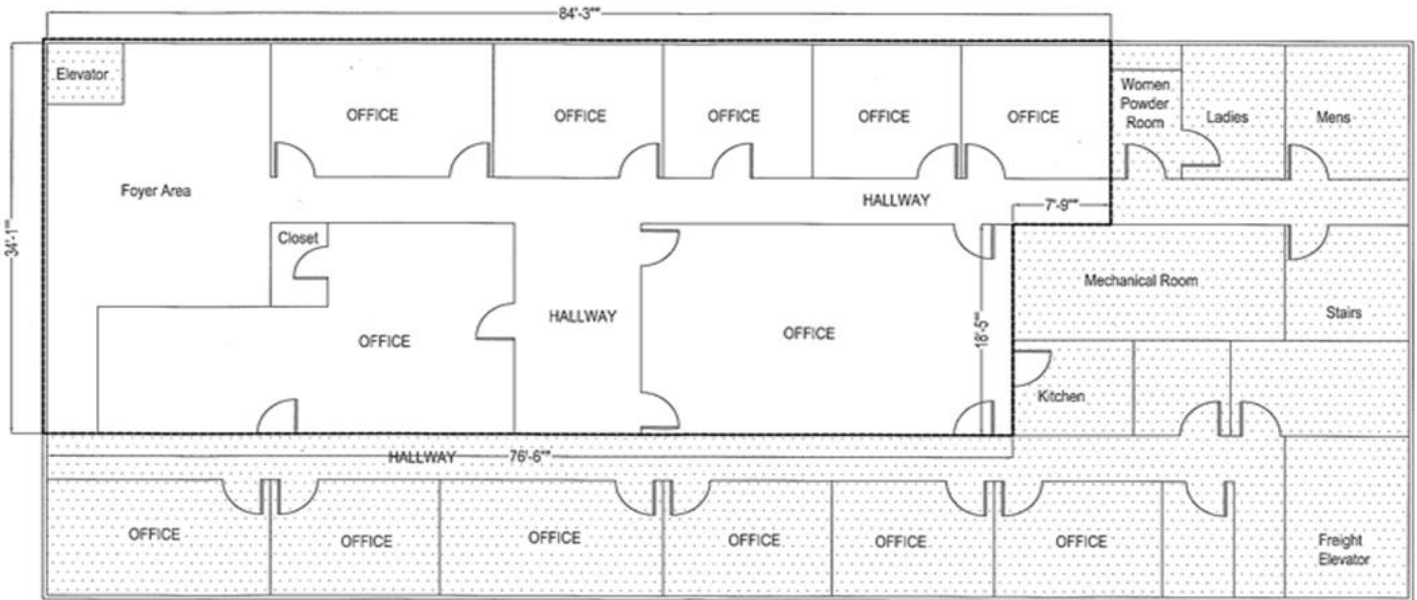


For more information, contact:

**GEORGE LUPTON, CCIM**  
434 455 2306  
[george.lupton@thalhimer.com](mailto:george.lupton@thalhimer.com)

**NORMAN MOON, CCIM, SIOR**  
First Vice President  
434 455 2302  
[norman.moon@thalhimer.com](mailto:norman.moon@thalhimer.com)

Coffee Crossing  
6000 Boonsboro Road, Suite A  
Lynchburg, VA 24503  
[www.thalhimer.com](http://www.thalhimer.com)



ROOMS IN USE

## Property Features

- 32,400 sf office building at the corner of Main St. and the entrance to the City of Lynchburg's public parking deck
- 4 stories serviced by elevator
- Space ranging from executive suites to 2,875± sf
- Located in the Central Business District at the center of City's downtown revitalization efforts
- Building positioned directly in front of City's public parking deck, the most convenient parking available in the downtown area
- Below market rental rates with on-site property management

For more information, contact:

**GEORGE LUPTON, CCIM**  
 434 455 2306  
[george.lupton@thalhimer.com](mailto:george.lupton@thalhimer.com)

**NORMAN MOON, CCIM, SIOR**  
 First Vice President  
 434 455 2302  
[norman.moon@thalhimer.com](mailto:norman.moon@thalhimer.com)

Coffee Crossing  
 6000 Boonsboro Road, Suite A  
 Lynchburg, VA 24503  
[www.thalhimer.com](http://www.thalhimer.com)



For more information, contact:

**GEORGE LUPTON, CCIM**  
434 455 2306  
[george.lupton@thalhimer.com](mailto:george.lupton@thalhimer.com)

**NORMAN MOON, CCIM, SIOR**  
First Vice President  
434 455 2302  
[norman.moon@thalhimer.com](mailto:norman.moon@thalhimer.com)

Coffee Crossing  
6000 Boonsboro Road, Suite A  
Lynchburg, VA 24503  
[www.thalhimer.com](http://www.thalhimer.com)