

Property Details

- ONE STORY INDUSTRIAL WAREHOUSE BUILDING: APPROXIMATELY 19,000 S.F.
- LAND AREA: APPROXIMATELY 3 ACRES
- WAREHOUSE: CEILING HEIGHT FREE SPAN MINIMUM OF 15 FT THROUGHOUT WAREHOUSE AND SHOP AREA
- TWO LOADING DOCKS
- ONE STREET LEVEL 8X8 OVERHEAD DOOR
- THREE RESTROOMS
- AMPLE ON SITE PARKING
- HVAC PARTIAL RADIANT VAC HEAT IN WAREHOUSE AND REZNOR GAS FIRED BLOWER
- ROOF TYPE: FLAT ROOF OVER METAL DECKING SUPPORTED BY PRE-FABRICATED STEEL TRUSSES WITH RUBBER MEMBRANE COVER
- FLOOR: SEALED CONCRETE
- INTERIOR WALLS: PAINTED BLOCK WALLS AND SOME PRE-FINISHED PANELS
- EXTERIOR WALLS: BRICK OVER CONCRETE BLOCK FACING STREET SIDE
- ELECTRIC SERVICE: TWO SERVICES: ONE 240 VOLT SINGLE PHASE 3 WIRE AND ONE 240 VOLT 3-PHASE 3 WIRE. CAPACITY UNMARKED. WIRING INCONDUIT.
- WAREHOUSE: LOT AND BLOCK 388-C-90, 388-C-75, 388-C-65, 388-C-63

Tax Information

2015 APPROXIMATE TAXES

- WEST MIFFLIN BOROUGH TAXES: \$5,549
- SCHOOL TAXES: \$18,004
- ALLEGHENY COUNTY TAXES: \$3,477

Utility Information

- DUQUESNE LIGHT
- COLUMBIA GAS
- PA AMERICAN WATER
- VERIZON INTERNET AND TELEPHONE; ATC ALARM SYSTEM
- WEST MIFFLIN SANITARY AUTHORITY

Terri Bacsi Commercial Sales & Leasing Coldwell Banker Commercial, NRT

9600 Perry Highway, Suite 200
Pittsburgh, PA 15237
Office: 412-548-1064
Mobile: 412-779-0270
License # RS-088554-A
email: terri.bacsi@pittsburghmoves.com
www.cbcworldwide.com



DISCLAIMER:

ALL INFORMATION FURNISHED REGARDING PROPERTY FOR SALE IS FROM SOURCES DEEMED RELIABLE BUT IS NOT GUARANTEED. NO REPRESENTATION IS MADE AS TO THE ACCURACY THEREOF AND IS SUBMITTED SUBJECT TO ERRORS, OMISSIONS, CHANGE OF PRICE, OR OTHER CONDITIONS PRIOR TO SALE, OR WITHDRAWAL WITHOUT NOTICE. COLDWELL BANKER WILL MAKE NO REPRESENTATION AND ASSUMES NO OBLIGATION REGARDING THE PRESENCE OR ABSENCE OF TOXIC OR HAZARDOUS WASTE OR SUBSTANCES OR OTHER UNDESIRABLE MATERIAL ON OR ABOUT THE PROPERTY. THE BUYER IS EXCLUSIVELY RESPONSIBLE FOR ANY AND ALL VERIFICATION OF ANY MATTER THAT IS MATERIAL TO THEIR DECISION-MAKING PROCESS AS IT MAY APPLY TO THE PURCHASE OF THIS PROPERTY

621 Regis Avenue

West Mifflin, PA 15236



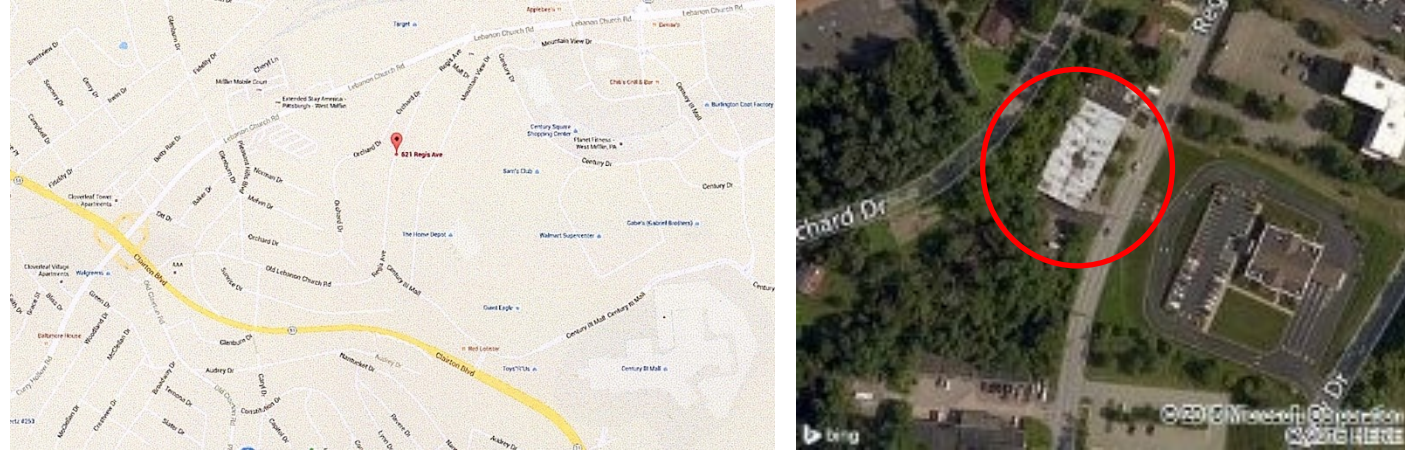
WAREHOUSE/POTENTIAL REDEVELOPMENT SITE



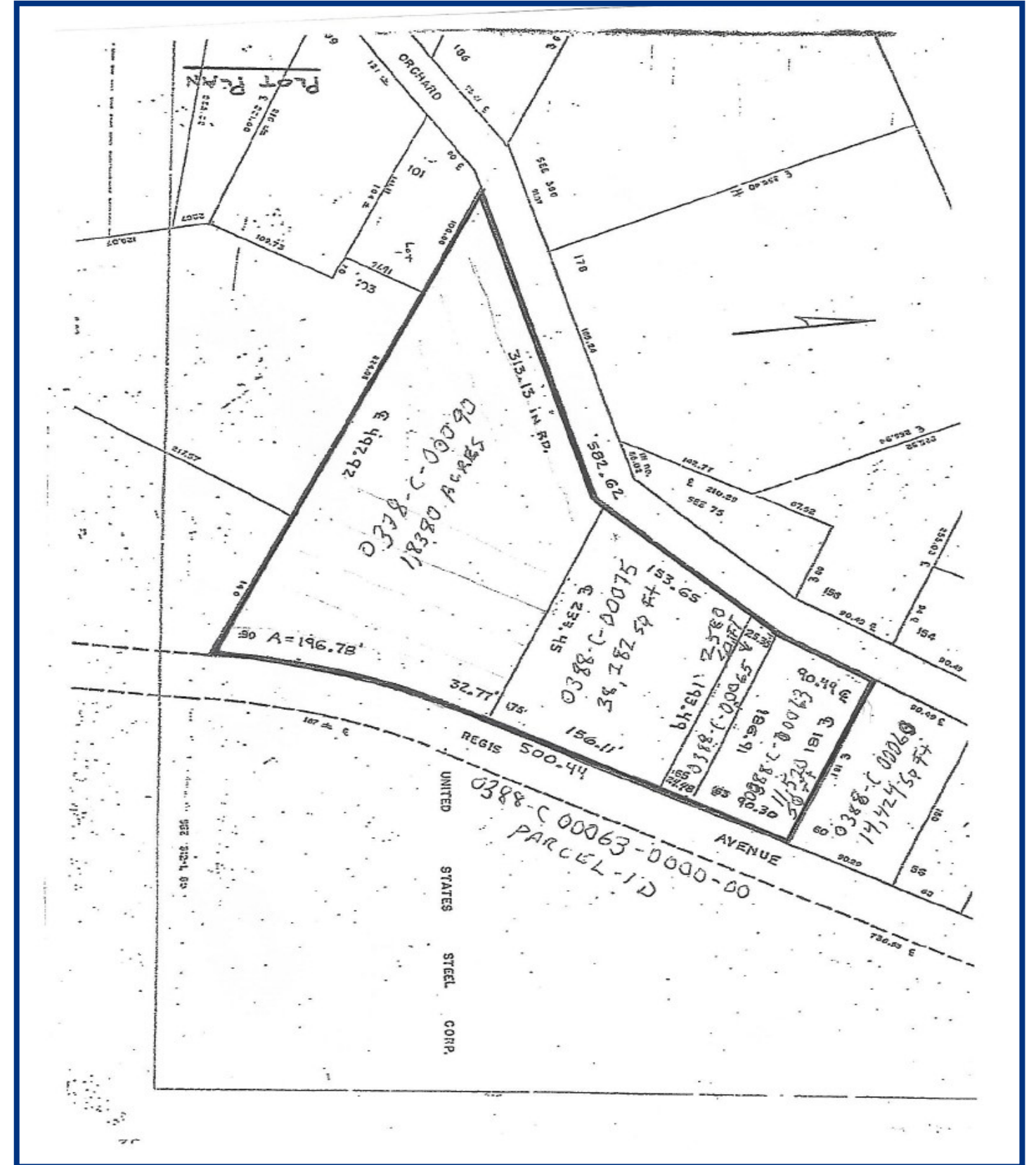
Terri Bacsi
Commercial Sales & Leasing
Coldwell Banker Commercial, NRT
Mobile: 412-779-0270

Zoned C-1
General Commercial District

Warehouse sketch
Approximately 19,000 S.F.



Survey of
Four (4) Contiguous Lots
Approximately Three (3) Acres



WAREHOUSE BUILDING FLOOR PLAN

