

LEASE SCHEDULE

LOCATION	TENANT	LEASE AREA
A-1a	ROSS DRESS FOR LESS	25,612 SQ.FT.
A-1b	BINNY'S	25,911 SQ.FT.
A-2a	GUITAR CENTER	10,172 SQ.FT.
A-2b	SUSHIGAWA	3,184 SQ.FT.
A-2c	GUITAR CENTER	1,275 SQ.FT.
A-3/4/5	HUMANA	5,635 SQ.FT.
A-6	UPS STORE	1,869 SQ.FT.
A-7	FIVE GUYS	3,528 SQ.FT.
B-1 a	SUMMIT SALON ACADEMY	6,650 SQ.FT.
B-1 c	CLOTHES MENTOR	5,540 SQ.FT.
B-2	PETCO + WELLNESS	12,488 SQ.FT.
B-3/B-5	ULTA	11,114 SQ.FT.
B-6	CHUCK-E-CHEESE	13,252 SQ.FT.
B-7a	BURLINGTON	38,891 SQ.FT.
B7b-1	AVAILABLE	3,533 SQ.FT.
B7b-2	AVAILABLE	3,652 SQ.FT.
B7b-3	CONDITIONED WAREHOUSE - AVAILABLE	4,507 SQ.FT.
B-8	MICHEALS	25,234 SQ.FT.
OUTLOT	PANERA BREAD	5,580 SQ.FT.
OUTLOT	U.S. CELLULAR	2,693 SQ.FT.
	CEFCU ATM KIOSK	-
GROSS LEASABLE AREA (GLA) =		210,320 SQ.FT.

PARKING DATA:

TOTAL =	879	PARKING SPACES
RATIO =	4.18	/ 1,000 SQ. FT.

SHOPPING CENTER ACREAGE
 ~ 16.10 ACRES (EXCLUDING OUTLOTS)
 ~ 19.35 ACRES (INCLUDING OUTLOTS)

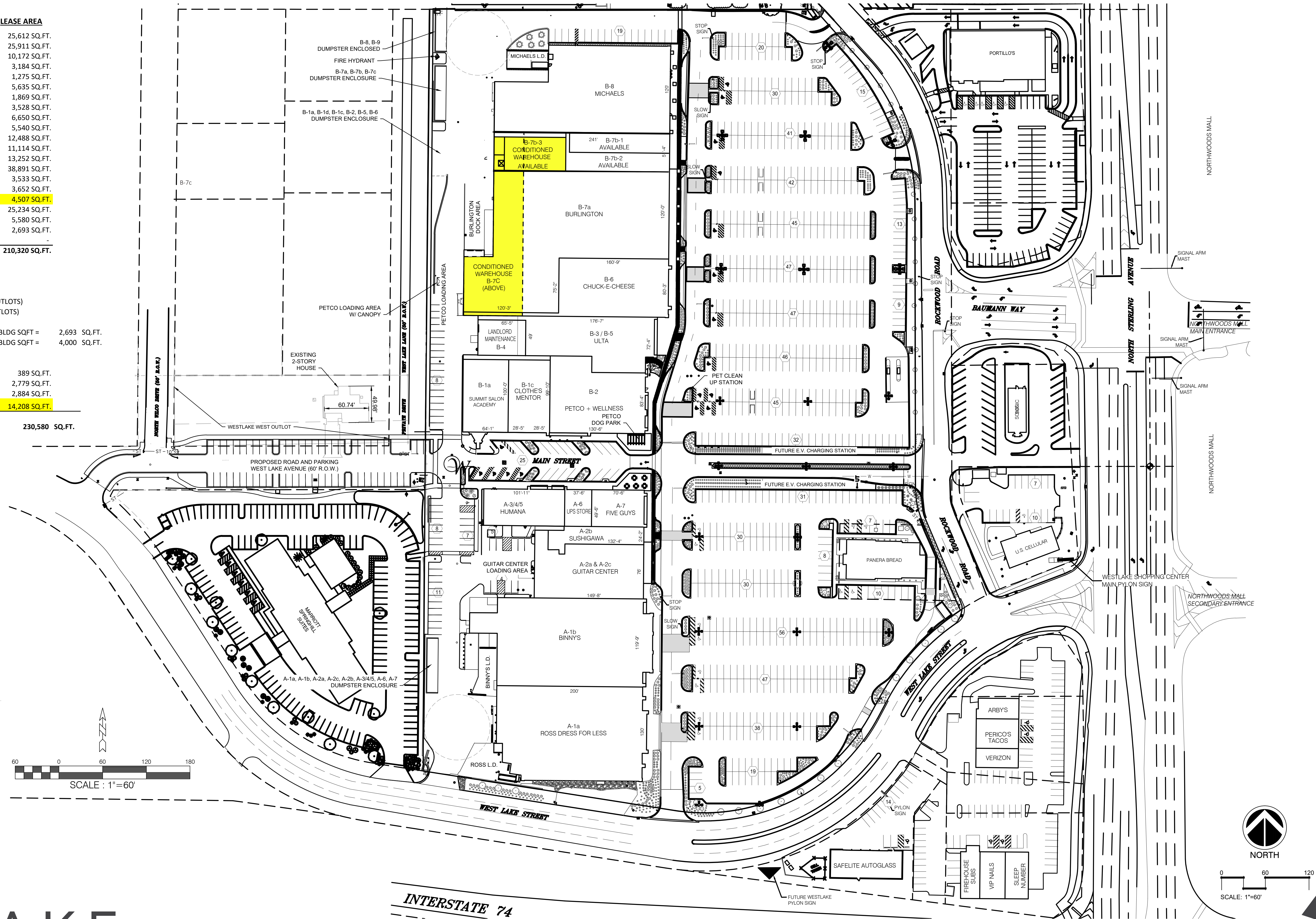
OUTLOT ACREAGE

U.S. CELLULAR	0.54 ACRES - BLDG SQFT =	2,693 SQ.FT.
SAFELITE AUTOGLASS	0.47 ACRES - BLDG SQFT =	4,000 SQ.FT.
TOTAL =	1.01	

NON-GFLA:

BUILDING "A" ELECTRICAL RM	389 SQ.FT.	
BUILDING "B" CORRIDORS	2,779 SQ.FT.	
B-4 LANDLORD MAINTENANCE	2,884 SQ.FT.	
B-7c	CONDITIONED WAREHOUSE - AVAILABLE	14,208 SQ.FT.

GROSS FLOOR AREA (GFLA)
 (EXCLUDING OUTLOTS) **230,580 SQ.FT.**



WESTLAKE

PROPOSED SUBDIVISION PLAN

PEORIA, IL | JULY 5, 2022