



2792 Stelzer Rd

2792 Stelzer Rd, Columbus, Ohio 43219

Property Features

- 2,200 SF Retail Space
- Fully Built-Out Open Floorplan
- Move-In Ready Opportunity
- Ample Parking in Front and Back
- Front & Rear Entrance
- Monument Signage on Stelzer Rd.
- High Traffic Retail Plaza Anchored by Giant Eagle
- Over 16,000 VPD on Stelzer Rd
- Just 1.8 Miles South of Easton Town Center
- 2.3 Miles from John Glenn International Airport
- Taxes and CAM at \$8.26 PSF

Lease Rate: \$20.00 SF/Yr (NNN)



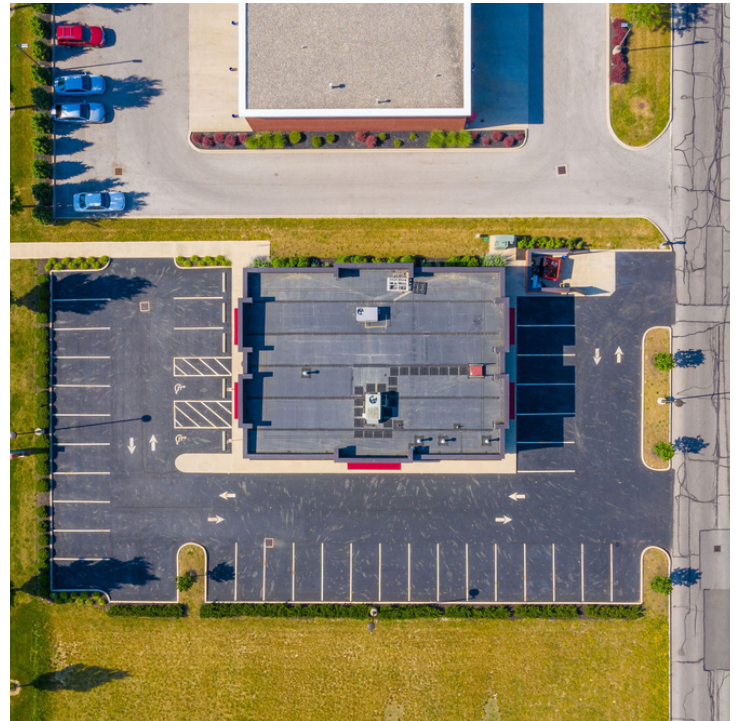
For more information:

John Mally

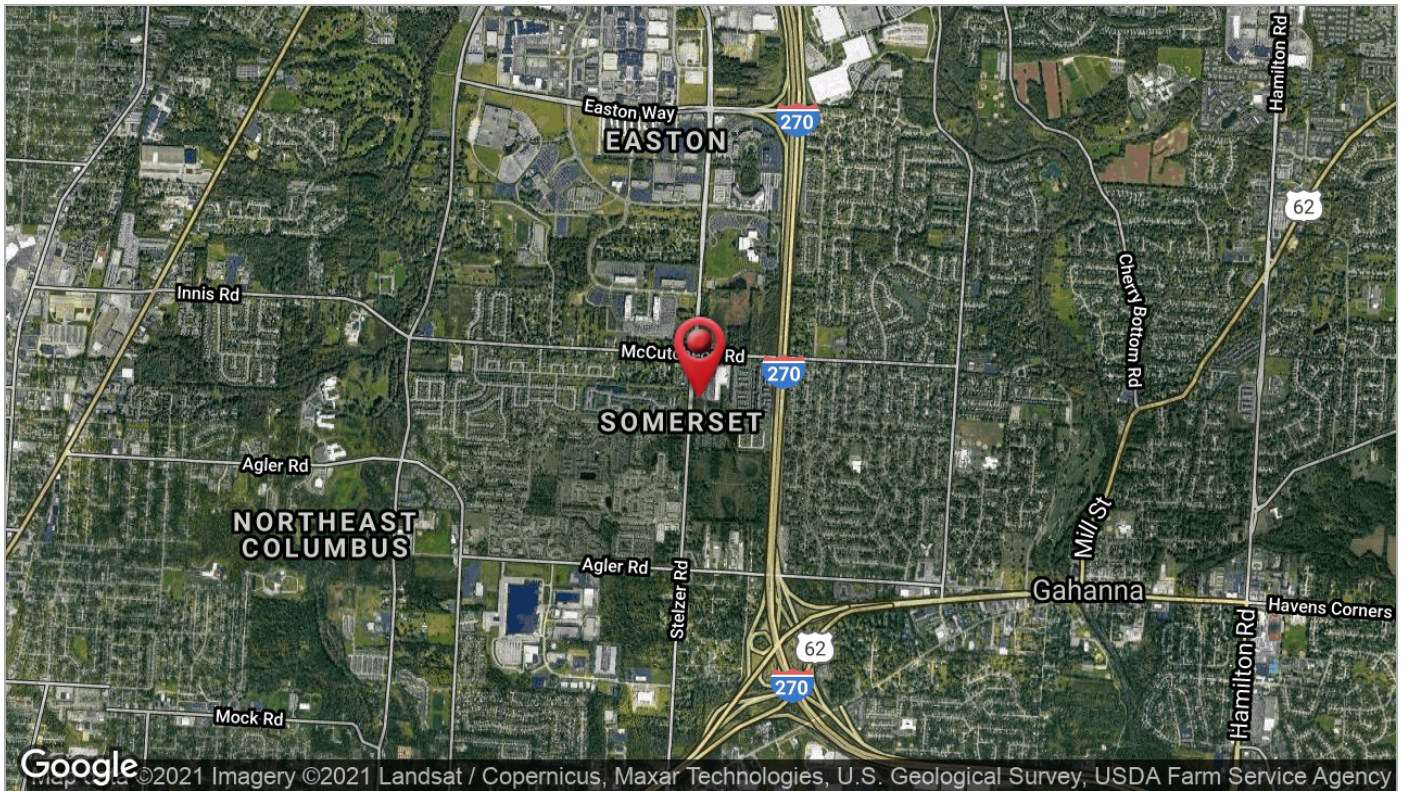
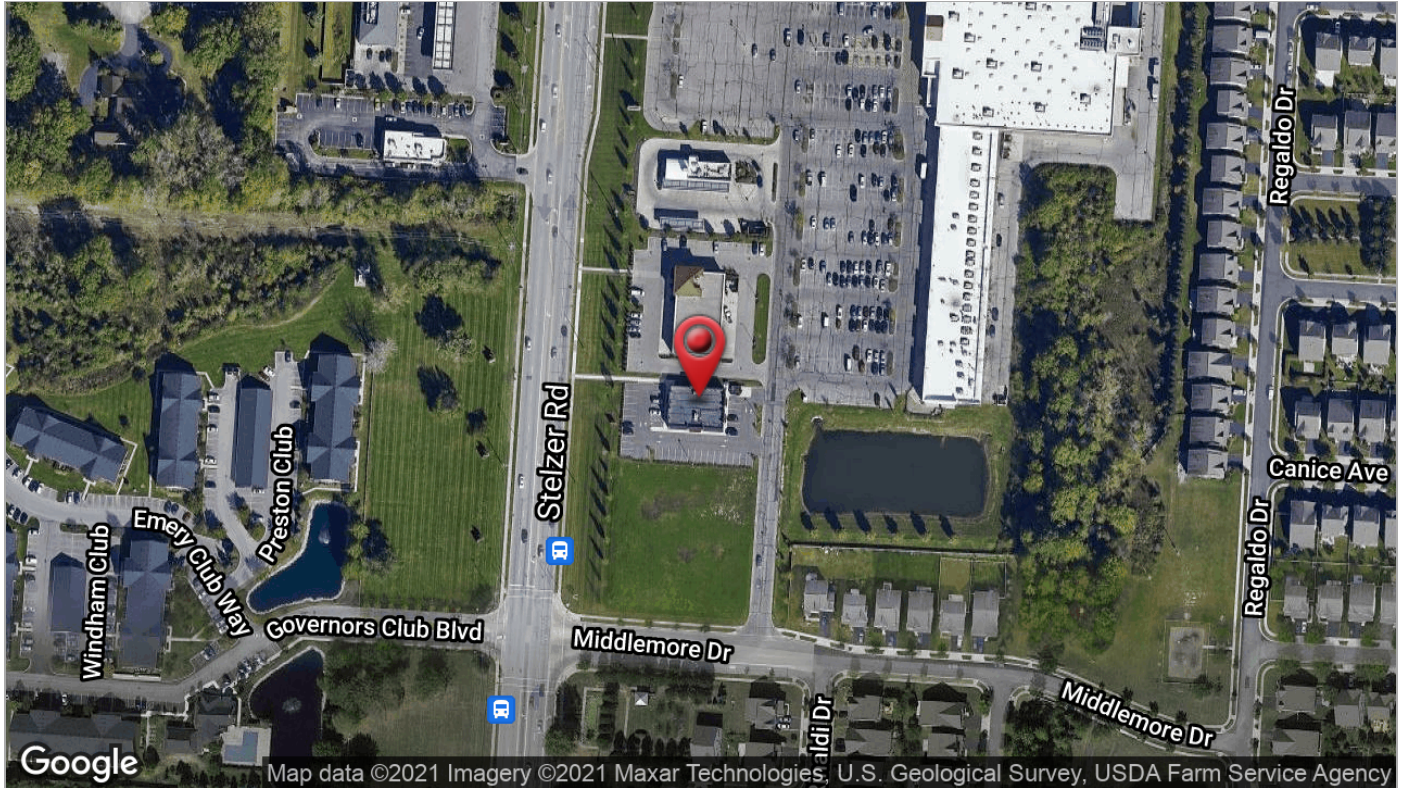
614 629 5254 • jmally@ohioequities.com

Conor David

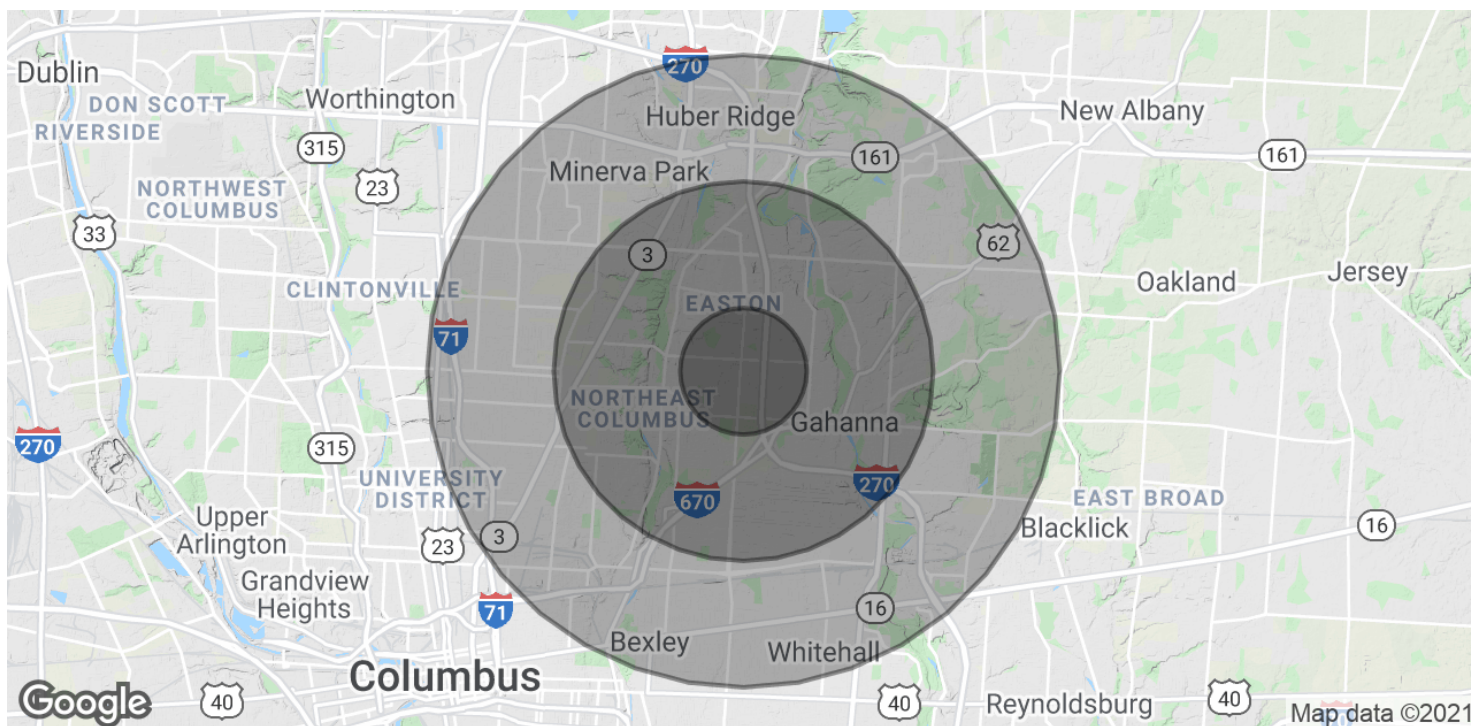
614 629 5298 • cdavid@ohioequities.com











POPULATION	1 MILE	3 MILES	5 MILES
Total Population	10,455	69,829	229,644
Average age	31.9	33.6	34.6
Average age (Male)	30.8	33.1	33.4
Average age (Female)	33.2	34.4	35.7
HOUSEHOLDS & INCOME	1 MILE	3 MILES	5 MILES
Total households	4,004	27,258	92,394
# of persons per HH	2.6	2.6	2.5
Average HH income	\$52,127	\$58,707	\$59,115
Average house value	\$157,026	\$177,022	\$167,438

* Demographic data derived from 2010 US Census