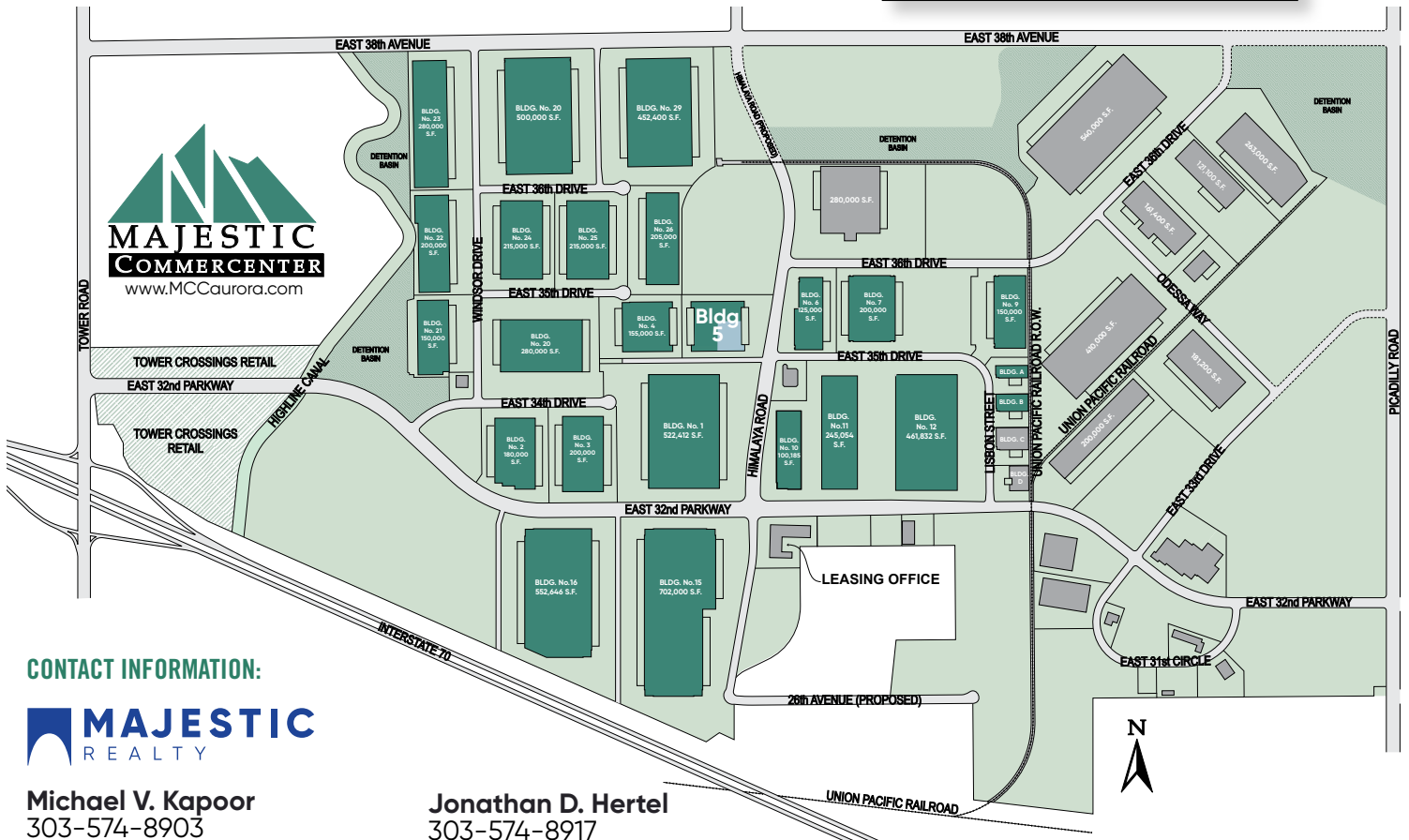
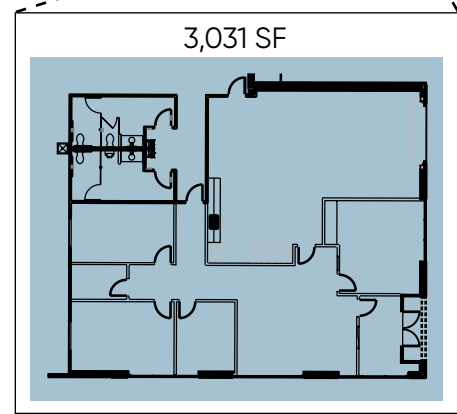


**Majestic Commercenter Features**

- 1,600 Acre Master Planned Business Park
- 10 Million Square Feet Developed
- 25,000 to 1,500,000 Square Feet Available
- Spec Product and Build-to-Suit
- Immediate Access to I-70 at Tower Road
- I-70 and E-470 Frontage
- 5 miles South of Denver International Airport
- Federal Opportunity Zone
- Adams County Enterprise Zone
- Foreign Trade Zone 293
- Xcel Energy Certified Site



**CONTACT INFORMATION:**



**Michael V. Kapoor**  
 303-574-8903  
 mkapoor@majesticrealty.com

**Jonathan D. Hertel**  
 303-574-8917  
 jhertel@majesticrealty.com

This statement is based upon information which we believe to be correct and is obtained from sources we regard as reliable but we assume no liability for errors or omissions therein.