

# Sandy Freestanding Drive-thru

1373 E. 10600 S.  
Sandy, UT 84092

**PRICED REDUCED**



## RETAIL | FOR SALE / LEASE

### PROPERTY INFORMATION

- > 1,500 SF Drive-thru
- > Sales Price: \$1,375,000
- > Lease Rate: \$6,250.00/mo, NNN
- > Grease trap
- > Great visibility and access
- > 15 parking spaces

### DEMOGRAPHICS

POPULATION	1 MILE	3 MILE	5 MILE
------------	--------	--------	--------

2024 EST 13,903 105,107 239,363

2029 PROJ 13,520 103,390 238,734

#### HOUSEHOLDS

2024 EST 4,486 36,146 85,407

2029 PROJ 4,466 36,464 87,330

#### INCOME

2024 AVG \$159,912 \$164,164 \$151,412

2024 MED \$125,108 \$122,088 \$112,958

Source: ESRI 2024

**NAIPremier**  
COMMERCIAL REAL ESTATE SERVICES, WORLDWIDE

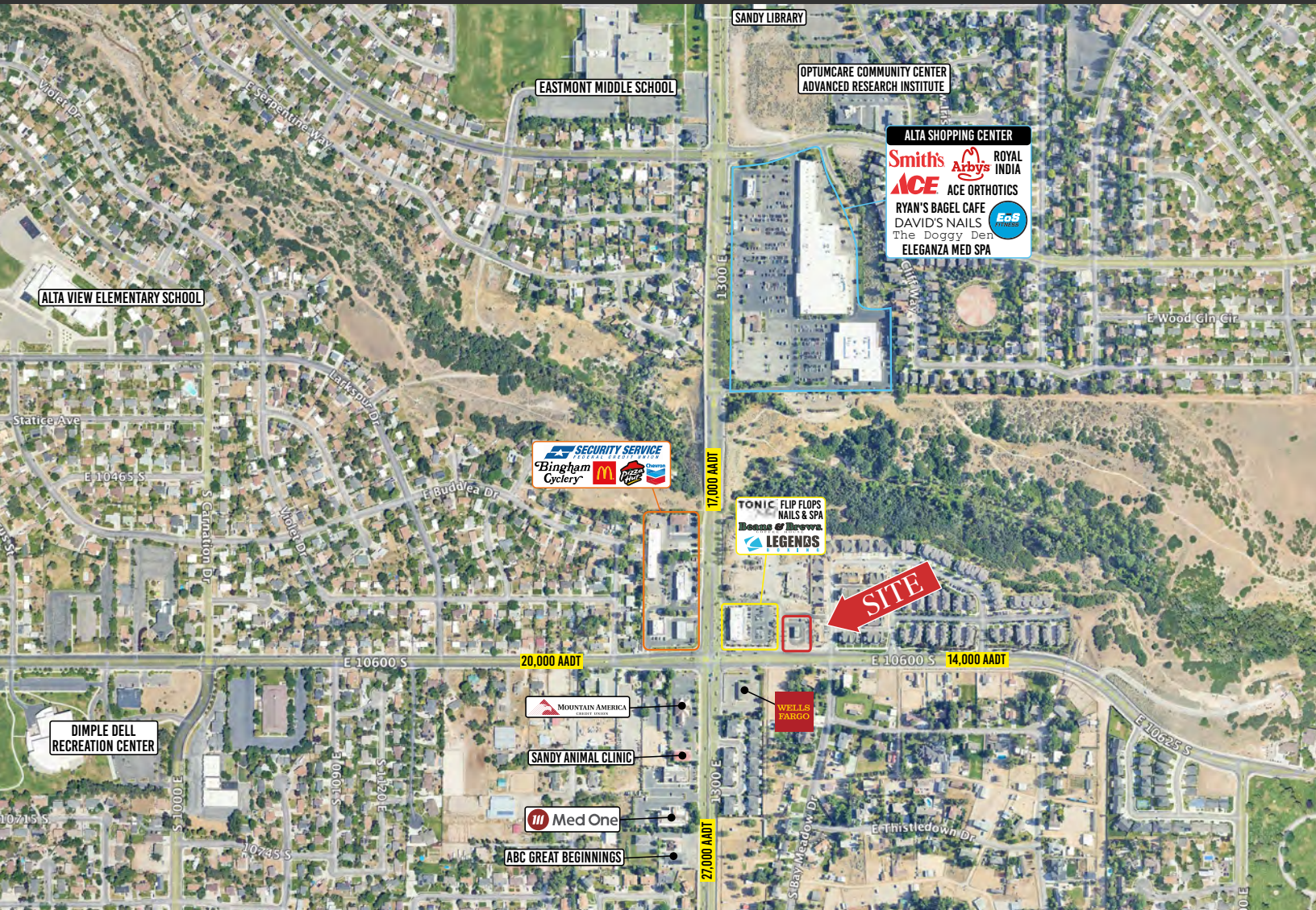
801 255 3333 | [naipremier.com](http://naipremier.com)

**Marlon Hill**  
Principal Broker, MBA

801 548 3262  
[mhill@naipremier.com](mailto:mhill@naipremier.com)

**Tom Longaker**  
Associate Broker

801 755 1264  
[tlongaker@naipremier.com](mailto:tlongaker@naipremier.com)



**NAIPremier**

7455 Union Park Avenue Ste. A, Midvale, Utah 84047

801 255 3333 | [naipremier.com](http://naipremier.com)

NO WARRANTY OR REPRESENTATION, EXPRESS OR IMPLIED, IS MADE AS TO THE ACCURACY OF THE INFORMATION CONTAINED HEREIN, AND THE SAME IS SUBMITTED SUBJECT TO ERRORS, OMISSIONS, CHANGE OF PRICE, RENTAL OR OTHER CONDITIONS, PRIOR SALE, LEASE OR FINANCING, OR WITHDRAWAL WITHOUT NOTICE, AND OF ANY SPECIAL LISTING CONDITIONS IMPOSED BY OUR PRINCIPALS. NO WARRANTIES OR REPRESENTATIONS ARE MADE AS TO THE CONDITION OF THE PROPERTY OR ANY HAZARDS CONTAINED THEREIN ARE ANY TO BE IMPLIED.