



SMITHFIELD

STOKE ON TRENT



RETAIL & LEISURE OPPORTUNITIES
IN THE HEART OF STOKE-ON-TRENT



ONE OF THE UK'S 15
LARGEST CITIES BY
POPULATION SIZE.

33,000 STUDENTS
KEELE &
STAFFORDSHIRE
UNIVERSITIES.

2.76M CATCHMENT
WITHIN 45 MINS
(MORE THAN GLASGOW,
EDINBURGH, CARDIFF,
BRISTOL, NEWCASTLE).

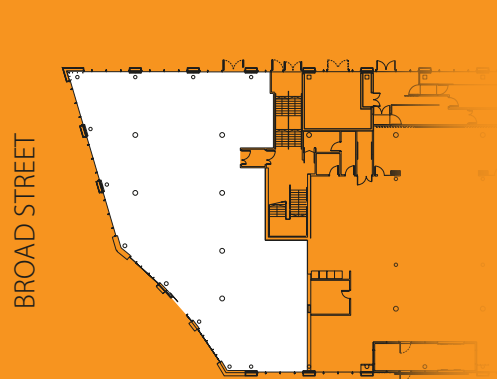
CATCHMENT
COMPRISES UP TO
870,000 PEOPLE
WITH A TOTAL
COMPARISON
GOODS SPEND OF
£1.5 BILLION PA.



SMITHFIELD
COMPRISES 1.2
MILLION SQ FT OF
RETAIL/LEISURE,
HOTEL AND OFFICE
SPACE OVER
MULTIPLE PHASES.

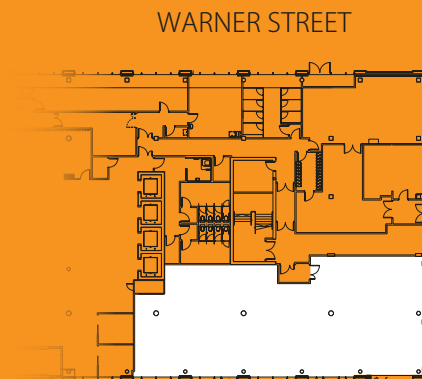
PHASE 1 CONSISTS OF NO.1
AND NO.2 SMITHFIELD.
BOTH BUILDINGS ACHIEVED
PRACTICAL COMPLETION
IN AUGUST 2015.

NO.1 SMITHFIELD IS **LET**
TO STOKE-ON-TRENT
CITY COUNCIL, WITH 770
PEOPLE DUE TO BE IN
OCCUPATION BY AUTUMN
2016. NO.2 SMITHFIELD
HAS 2 FLOORS LET TO
WATER PLUS, WITH AN
ESTIMATED 400 STAFF TO
BE ON SITE.



BROAD STREET

UNIT A - 5,000 SQ FT



WARNER STREET

LEONARD COATES WAY

UNIT B - 3,500 SQ FT

- HIGH QUALITY, SHELL SPECIFICATION ACCOMMODATION AVAILABLE
- OPPORTUNITY FOR OUTDOOR SEATING
- AVAILABLE FOR IMMEDIATE OCCUPATION BY WAY OF A NEW, EFFECTIVELY FULL REPAIRING AND INSURING LEASE FOR A TERM TO BE AGREED
- RENT UPON APPLICATION.

ALL ENQUIRIES: