

LAND FOR SALE



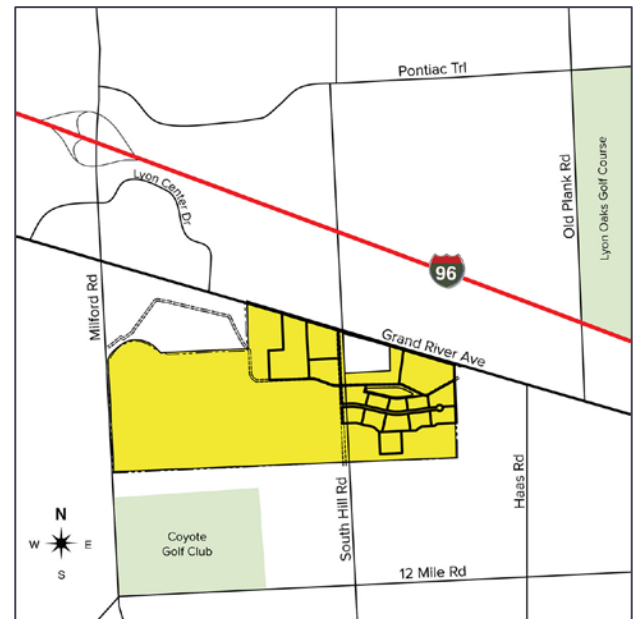
SIGNATURE ASSOCIATES
KNOW SIGNATURE | KNOW RESULTS

DEVELOPMENT OPPORTUNITY GRAND RIVER AVENUE | LYON TOWNSHIP, MI



PROPERTY FEATURES

- 3+ acres of prime frontage on Grand River Ave, Milford & South Hill Rds available
- Exceptional development opportunity in Oakland County's fastest growing community
- Minutes from Providence Park Hospital, Huron Valley Sinai Hospital, and University of Michigan Hospital, three of Michigan's top healthcare providers
- Flexible zoning, ideal for a variety of uses



For more information, please contact:

STEVE GORDON

(248) 948 0101

sgordon@signatureassociates.com

SIGNATURE ASSOCIATES

One Towne Square, Suite 1200

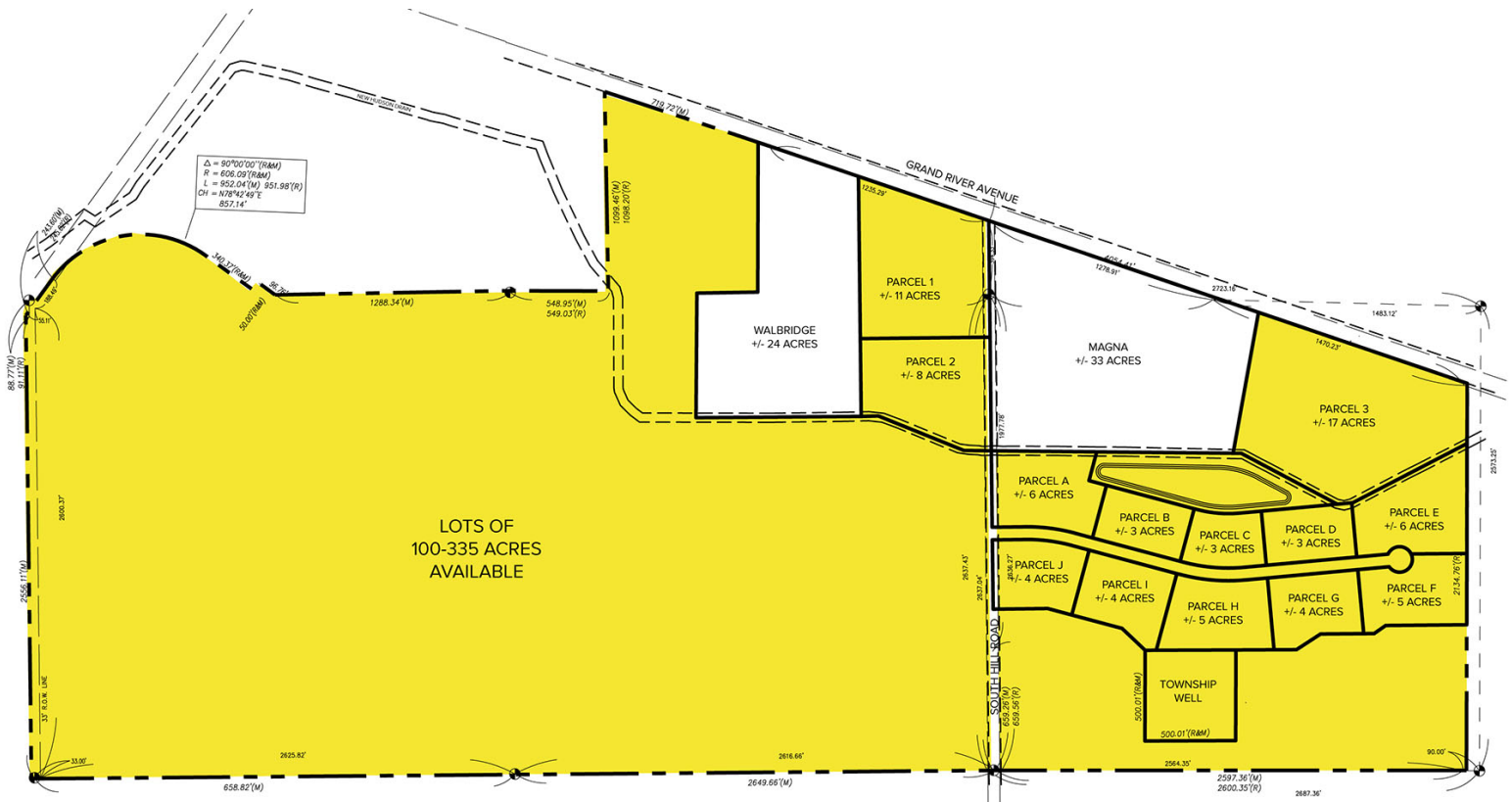
Southfield, MI 48076

www.signatureassociates.com

DEVELOPMENT OPPORTUNITY | 3+ ACRES

Grand River Avenue – Lyon Township, Michigan

Site Plan



- 35 minute drive to Detroit Metro Airport and Flint Bishop Airport
- Significant value offered with pre-paid tap fees included in the sale of several lots
- Water and sewer on-site
- Convenient I-96 freeway access to major businesses, industrial, and automotive headquarters in the region
- High average daily traffic counts on I-96 freeway, Milford Rd and Grand River Ave

LOTS	PRICE
Lots 1-3	\$185,000/Acre
Lots A-J	\$185,000/Acre
Lots 100+ <i>Land west of South Hill</i>	TBD

DEMOGRAPHICS (5-MILE RADIUS)	
POPULATION:	64,903
HOUSEHOLD INCOME:	\$87,930
DAYTIME POPULATION:	
Employees: 37,265	Businesses: 3,044

For more information, please contact:

STEVE GORDON

(248) 948 0101

sgordon@signatureassociates.com

SIGNATURE ASSOCIATES

One Towne Square, Suite 1200

Southfield, MI 48076

www.signatureassociates.com