



108 E. 38th Street, Suite B100
Sioux Falls, SD 57105

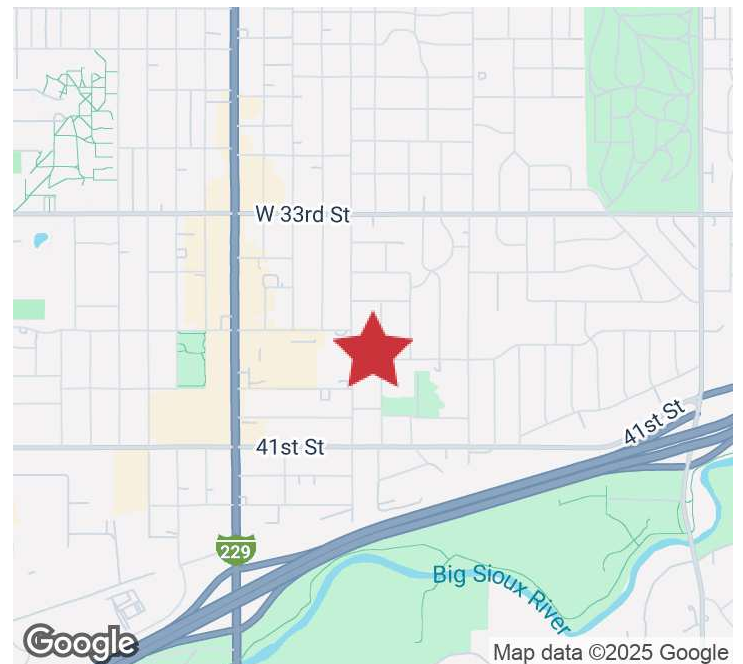
Suite B100 Size	1,152 SF
Suite B100 Lease Rate	\$1,500/MO GROSS

PROPERTY HIGHLIGHTS

- Keyless entry
- Common area conference room for tenant's use
- Waiting area
- Utilities included
- Illuminated exterior monument sign
- Inside building directory
- Security cameras
- On-site management

LOCATION DESCRIPTION

Located on E. 38th Street just east of Phillips Avenue
Great Central location
Neighbors include Hy-Vee, 605 Academy, Houndstooth House,
GreatLIFE



MICHAEL MARTIN, CCIM
Senior Vice President
mmartin@naisiouxfalls.com
605.261.2777

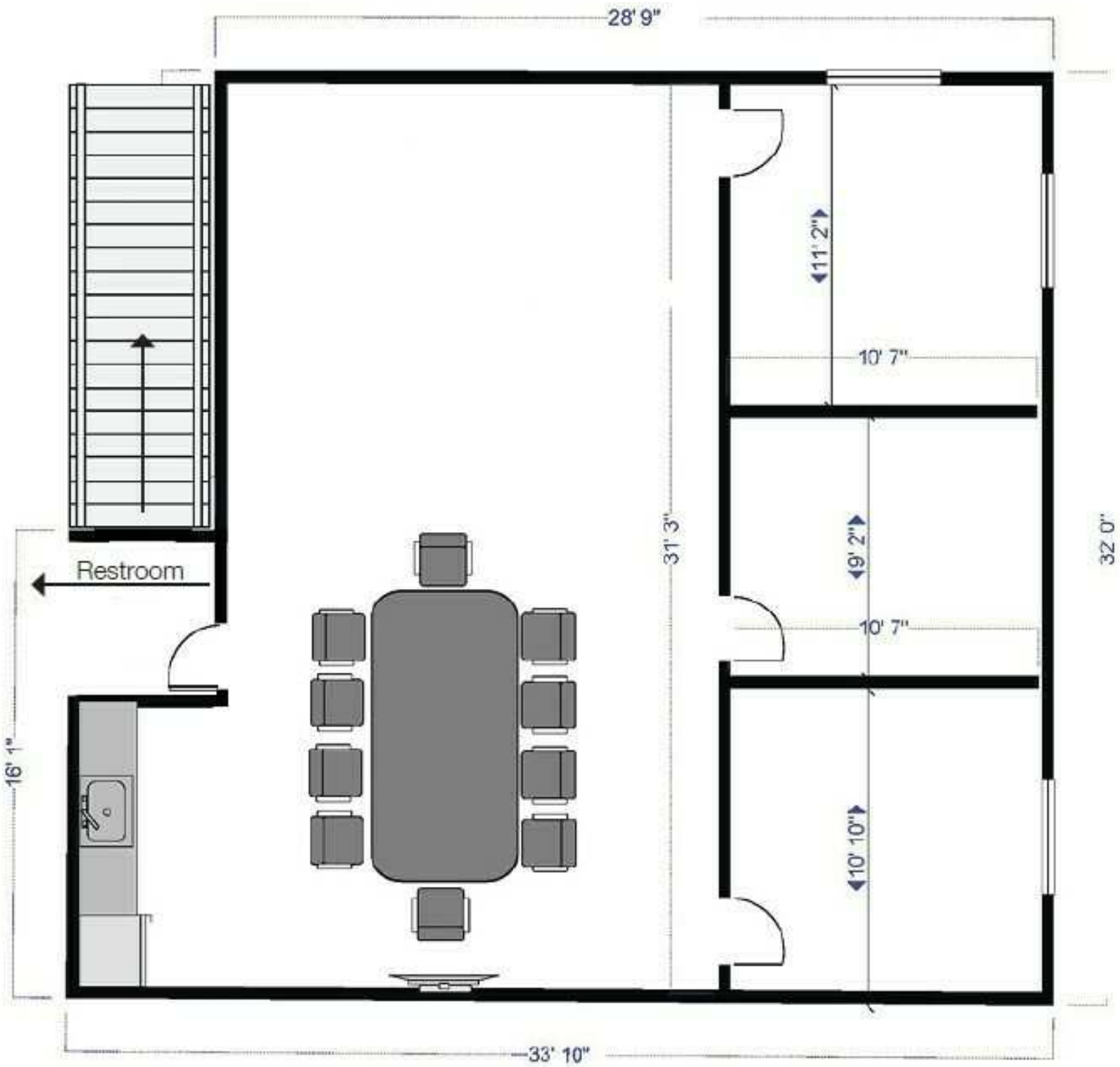
2500 W. 49th St. Suite 100
Sioux Falls, SD 57105
605.357.7100
naisiouxfalls.com

FLOOR PLANS

108 E. 38TH STREET
Sioux Falls, SD 57105

FOR LEASE

Office Suite



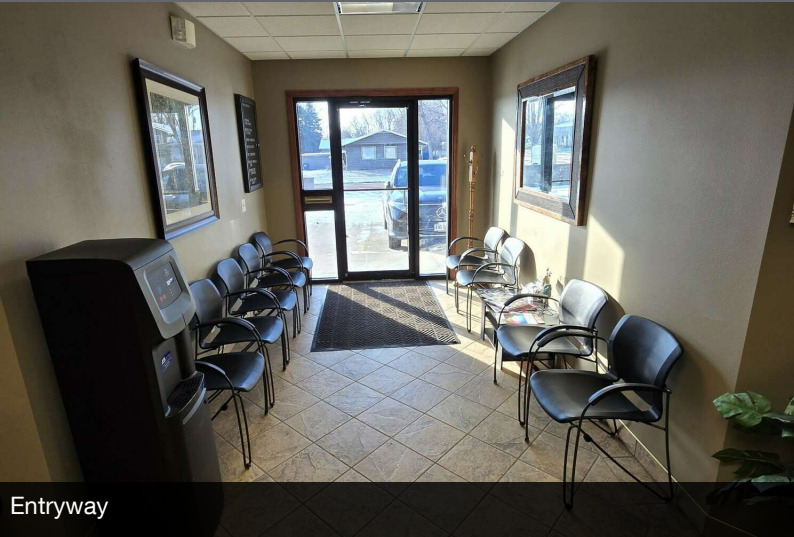
Add text here...

PHOTOS

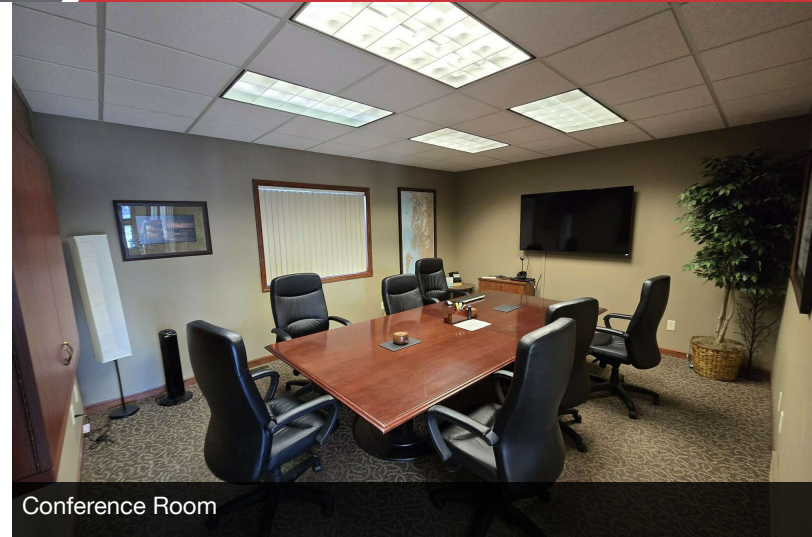
108 E. 38TH STREET
Sioux Falls, SD 57105

FOR LEASE

Office Suite



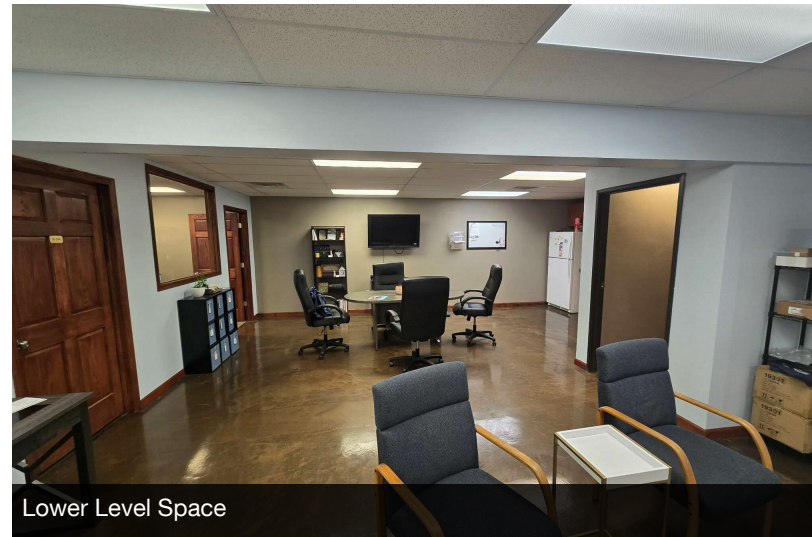
Entryway



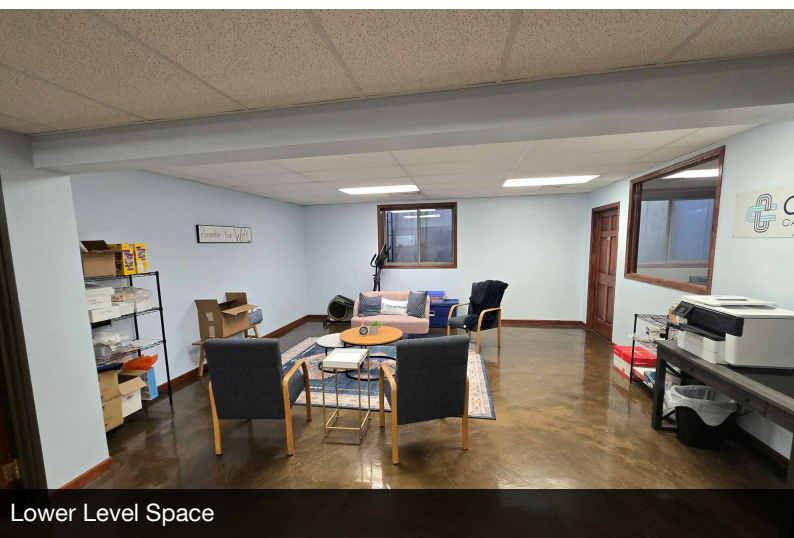
Conference Room



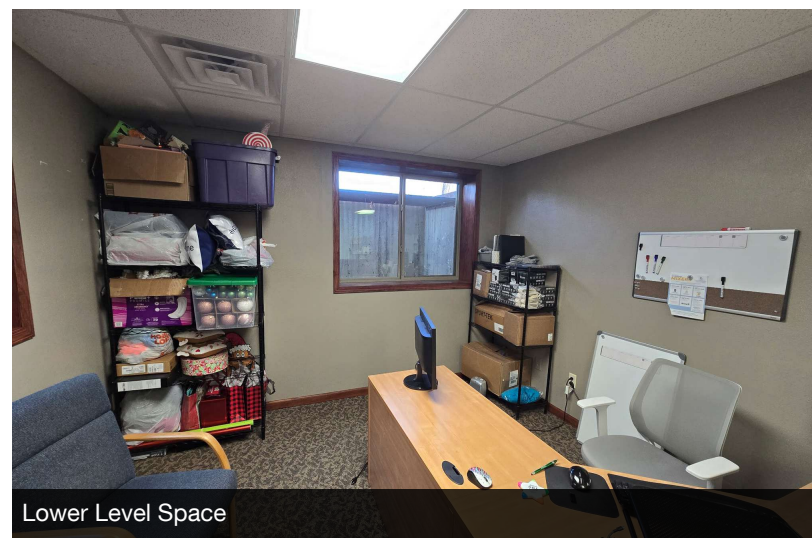
Lower Level Space



Lower Level Space



Lower Level Space



Lower Level Space

AERIAL

108 E. 38TH STREET
Sioux Falls, SD 57105

FOR LEASE

Office Suite



SUBJECT PROPERTY

Map data ©2025 Imagery ©2025 Airbus, Maxar Technologies, USDA/FPAC/GEO