

# FOR LEASE

1513 WALNUT STREET  
SUITE 101  
CARY, NC 27511

# SUITE AVAILABLE

NCAROLINA FINANCE LLC

FAIRWAY INDEPENDENT  
MORTGAGE CORPORATION

STATE FARM INSURANCE  
BRITTANY MONSOUR

D&S CAFETERIA INC.

**JOHN POWELL | PRESIDENT**

(919) 422-1612 (C)

JPOWELL@PHOENIXCOMMERCIALNC.COM

**WILL SOSSAMAN | ADVISOR**

(919) 632-6953 (C)

WILL@PHOENIXCOMMERCIALNC.COM



**PHOENIX**  
COMMERCIAL PROPERTIES

# PROPERTY OVERVIEW



**SUITE AVAILABLE**

SUITE 101: ±1,033 SF

**PARKING**

ABUNDANT SURFACE PARKING AVAILABLE

**LOCATION**

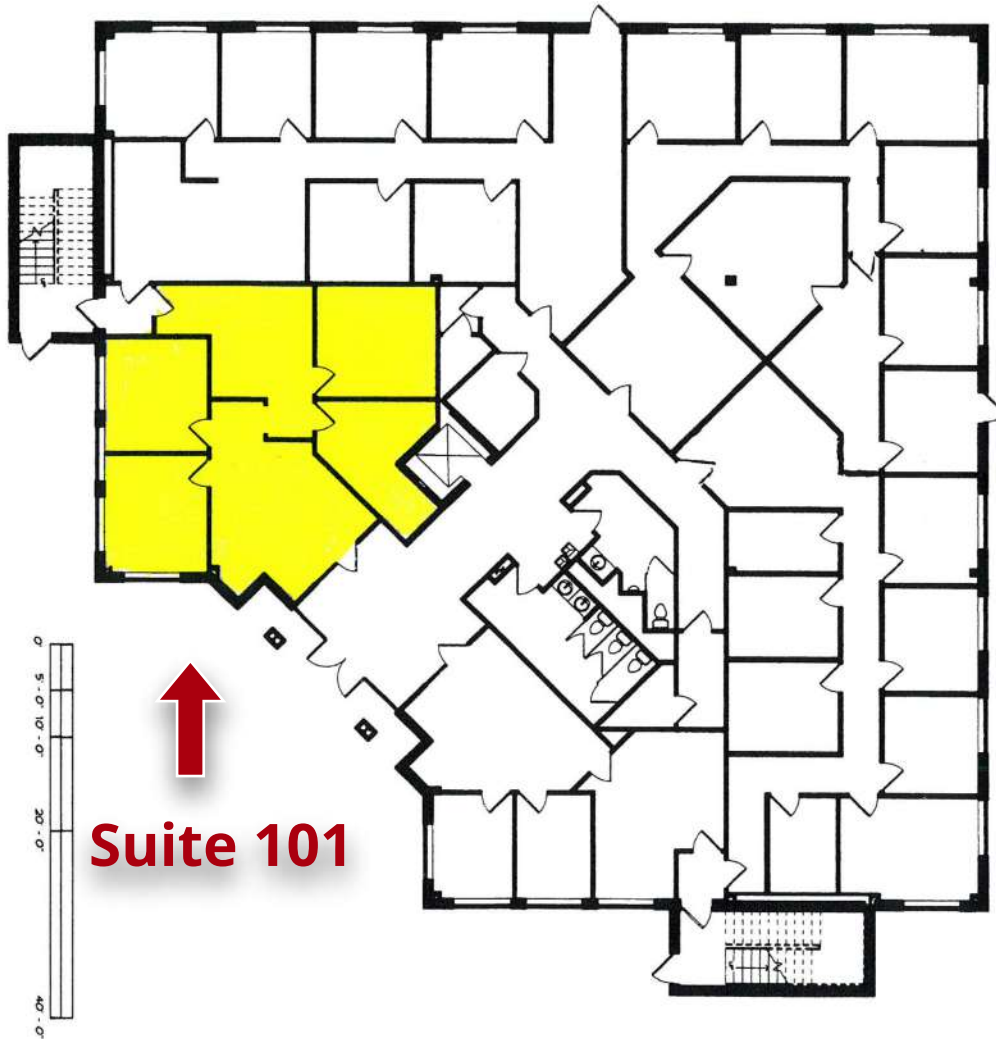
GREAT LOCATION OFF US-1 & CARY CROSSROADS,  
CLOSE TO EPIC GAMES HQ, CARY FIRE STATION,  
RESTAURANTS & RETAIL

**AVAILABILITY**

IMMEDIATELY

**RATE**

SUITE 101: \$26.50 PER SF FULL SERVICE



## SUITE 101 FEATURES:

- 1ST FLOOR LOBBY EXPOSURE
- 2 PRIVATE OFFICES ALONG THE GLASS
- 1 INTERIOR PRIVATE OFFICE
- LARGE RECEPTION AREA
- 2 INTERIOR WORK ROOMS

# SUITE 101 PHOTOS



OFFICE FOR LEASE | 1513 WALNUT STREET, SUITE 101, CARY NC

The information presented here is deemed to be accurate, but it has not been independently verified. We make no guarantee, warranty or representation to independently confirm accuracy and completeness.

# AREA AMENITIES



OFFICE FOR LEASE | 1513 WALNUT STREET, SUITE 101, CARY NC 27511

The information presented here is deemed to be accurate, but it has not been independently verified. We make no guarantee, warranty or representation to independently confirm accuracy and completeness.

# CONTACT

## JOHN POWELL | PRESIDENT

(919) 422-1612 (C)

JPOWELL@PHOENIXCOMMERCIALNC.COM

## WILL SOSSAMAN | ADVISOR

(919) 632-6953 (C)

WILL@PHOENIXCOMMERCIALNC.COM



## PHOENIX COMMERCIAL PROPERTIES, LLC

[HTTPS://PHOENIXCOMMERCIALNC.COM](https://phoenixcommercialnc.com)

## PHONE

(O) 919.896.6497

## ADDRESS

751 CORPORATE CENTER DRIVE, STE 305  
RALEIGH, NC 27607

