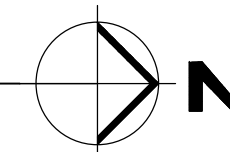


MECHANICAL ROOF PLAN

scale: 3/16" = 1'-0"



bd bach design engineers

5130 N. Federal Hwy, Suite 100
 Ft. Lauderdale, FL 33308
 P: (954) 461-4314
 bach@bachengineers.com
 CA#28826

Viet Bach Nguyen, P.E.
 Florida License #69753

SCOTT D. DYER ARCHITECT, P.A.

AA C001929
 AR 0011551

6671 CONCH COURT
 BOYNTON BEACH, FLORIDA
 33437
 (561) 596-7503

THIS DRAWING, AS AN INSTRUMENT OF SERVICE IS THE PROPERTY OF THE ARCHITECT AND IS NOT TO BE USED ON OTHER WORK, REPRODUCED IN WHOLE OR IN PART, WITHOUT THE ARCHITECT'S EXPRESS WRITTEN CONSENT.

TO THE BEST OF MY KNOWLEDGE, THE DRAWINGS AND SPECIFICATIONS SUBMITTED HEREWITH, COMPLY WITH EXISTING INTERPRETATIONS AND PROVISIONS OF THE APPLICABLE BUILDING CODES IN EFFECT AT THE DATE SHOWN BELOW. NO WARRANTY EXPRESS OR IMPLIED IS HEREBY GIVEN.

COPYRIGHT © 2024
 SCOTT D. DYER ARCHITECT, P.A.
 ALL RIGHTS RESERVED

SCOTT D. DYER AR-0011551

THIS DOCUMENT HAS BEEN DIGITALLY SIGNED AND SEALED BY SCOTT D. DYER ARCHITECT, P.A. USING A DIGITAL SIGNATURE AND DATE. PRINTED COPIES OF THIS DOCUMENT ARE NOT CONSIDERED SIGNED AND SEALED AND ALL SIGNATURES MUST BE VERIFIED ON ANY ELECTRONIC COPIES.

REVISIONS

COMM. NO.
 24-009

DATE
 17 OCTOBER 2024

COMMERCIAL
 SHELL BUILDING
 CARRETTA II LLC

OUTPARCEL
 BUILDING "D"

BOYNTON BEACH,
 FLORIDA

MECHANICAL ROOF PLAN

SHEET
 M-1

LAST DATE PRINTED 10-17-24 (PRELIM) / 10-22-24 (PRELIM)

HVAC GENERAL NOTES

1. GENERAL
 - A. ALL WORK SHALL BE DONE IN ACCORDANCE WITH THE 2023 FBC BUILDING CODE (MECHANICAL) 8TH ED. AND WITH ALL APPLICABLE REGULATIONS.
 - B. DRAWINGS: REFER TO ALL DRAWINGS FOR COORDINATION OF THE HVAC WORK.
 - C. ARRANGE AND PAY FOR ALL PERMITS LICENSES, INSPECTIONS AND TESTS. OBTAIN THE REQUIRED CERTIFICATES AND PRESENT TO OWNER.
 - D. GUARANTEE: THE COMPLETED INSTALLATION SHALL BE FULLY GUARANTEED AGAINST DEFECTIVE MATERIALS AND/OR IMPROPER WORKMANSHIP FOR A MINIMUM OF ONE YEAR FOR MATERIAL AND LABOR. ALL COMPRESSORS SHALL BE GUARANTEED FOR 5 YEARS MINIMUM.
2. SHOP DRAWINGS: CONTRACTORS SHALL SUBMIT FOR APPROVAL, WITHIN 30 DAYS AFTER SIGNING CONTRACT, A MINIMUM OF FIVE COPIES OF FULLY DESCRIPTIVE LITERATURE, INCLUDING BUT NOT LIMITED TO: AIR CONDITIONING UNITS, FANS AND AIR OUTLETS. NO WORK SHALL PROCEED WITHOUT APPROVAL OF THESE SUBMITTALS.
3. DESIGN PARAMETERS:
 - A. INDOOR DESIGN TEMPERATURE (SUMMER): 75F DB
 - B. INDOOR DESIGN TEMPERATURE (WINTER): 72F DB
4. ALL THERMOSTATS SHALL HAVE HEATING MODE MAXIMUM SETTING OF 75 F, AND COOLING MODE MINIMUM SETTING OF 70 F. THE THERMOSTAT SHALL BE ARRANGED TO PREVENT THE SIMULTANEOUS OPERATION OF HEATING AND COOLING.
5. ELECTRICAL CONTROLS AND POWER WIRING: UNDER ELECTRICAL CONTRACT.
6. EQUIPMENT SPECIFIED BY MANUFACTURER'S NUMBER SHALL INCLUDE ALL ACCESSORIES, CONTROLS, ETC., LISTED IN THE CATALOG AS STANDARD WITH THE EQUIPMENT. OPTIONAL OR ADDITIONAL ACCESSORIES SHALL BE FURNISHED AS SPECIFIED.
7. MATERIALS:
 - A. REFRIGERANT PIPING: SHALL BE TYPE L SOFT DRAWN, COPPER TUBING, DEHYDRATED FOR REFRIGERANT USE. SIZED AS SHOWN ON DRAWINGS OR AS PER AIR CONDITIONING EQUIPMENT MANUFACTURER'S RECOMMENDATIONS.
 - B. INSULATION: REFRIGERANT SUCTION PIPING AND CONDENSATE PIPES SHALL BE INSULATED WITH 3/4" THICK FOAMED PLASTIC INSULATION, FIRE RETARDANT TYPE. INSULATION SHALL HAVE A THERMAL RESISTIVITY OF AT LEAST R-3 AND HAVING EXTERNAL SURFACE PERMEANCE NOT EXCEEDING 0.05 PERM WHEN TESTED IN ACCORDANCE WITH ASTM 96.
 - C. DUCTWORK:
 - A. ALL SUPPLY AIR DUCTWORK SHALL BE 1-1/2" THICK FIBERGLASS DUCTBOARD, FABRICATED AND INSTALLED AS PER LATEST EDITION OF SMACNA "FIBROUS GLASS DUCT MANUAL", R-6.0 MIN IF ROOF INSULATION IS ABOVE DUCT & R-8.0 MIN IF ROOF INSULATION IS BELOW DUCT.
 - B. ALL OUTDOOR AND EXHAUST AIR DUCTWORK SHALL BE GALVANIZED SHEET METAL OR ALUMINUM DUCT NOT LIGHTER THAN 24 GAGE.
 - C. ALL DUCT DIMENSIONS ARE CLEAR INSIDE DIMENSIONS.
 - D. FLEXIBLE INSULATED DUCTWORK WITH 1-1/2" THICK FIBERGLASS INSULATION WITH FRK VAPOR BARRIER, R-6.0 MIN IF ROOF INSULATION IS ABOVE DUCT & R-8.0 MIN IF ROOF INSULATION IS BELOW DUCT.
8. CONTROLS: AIR CONDITIONING UNITS SHALL BE STARTED AND STOPPED THRU INDIVIDUAL PROGRAMMABLE THERMOSTAT. INDIVIDUAL THERMOSTATS SHALL START/STOP FANS AND ACTIVATE COOLING/HEATING SYSTEMS AS SELECTED.
9. TEST AND BALANCE: CONTRACTOR SHALL TEST AND BALANCE ALL VENTILATION AND AIR CONDITIONING SYSTEMS. SUBMIT FOUR COPIES OF TEST AND BALANCE REPORT, TO OWNER FOR APPROVAL.
10. ALL WORK SHALL BE COORDINATED WITH OTHER TRADES TO AVOID ANY INTERFERENCES THAT MAY DELAY PROGRESS OF CONSTRUCTION. CONTRACTOR SHALL INSTALL ALL NECESSARY OFFSETS, BENDS, AND TRANSITIONS REQUIRED TO PROVIDE A COMPLETE SYSTEM AT NO ADDITIONAL COST TO OWNER.

Roof Curb Dimensions — 48/50FE 04-07

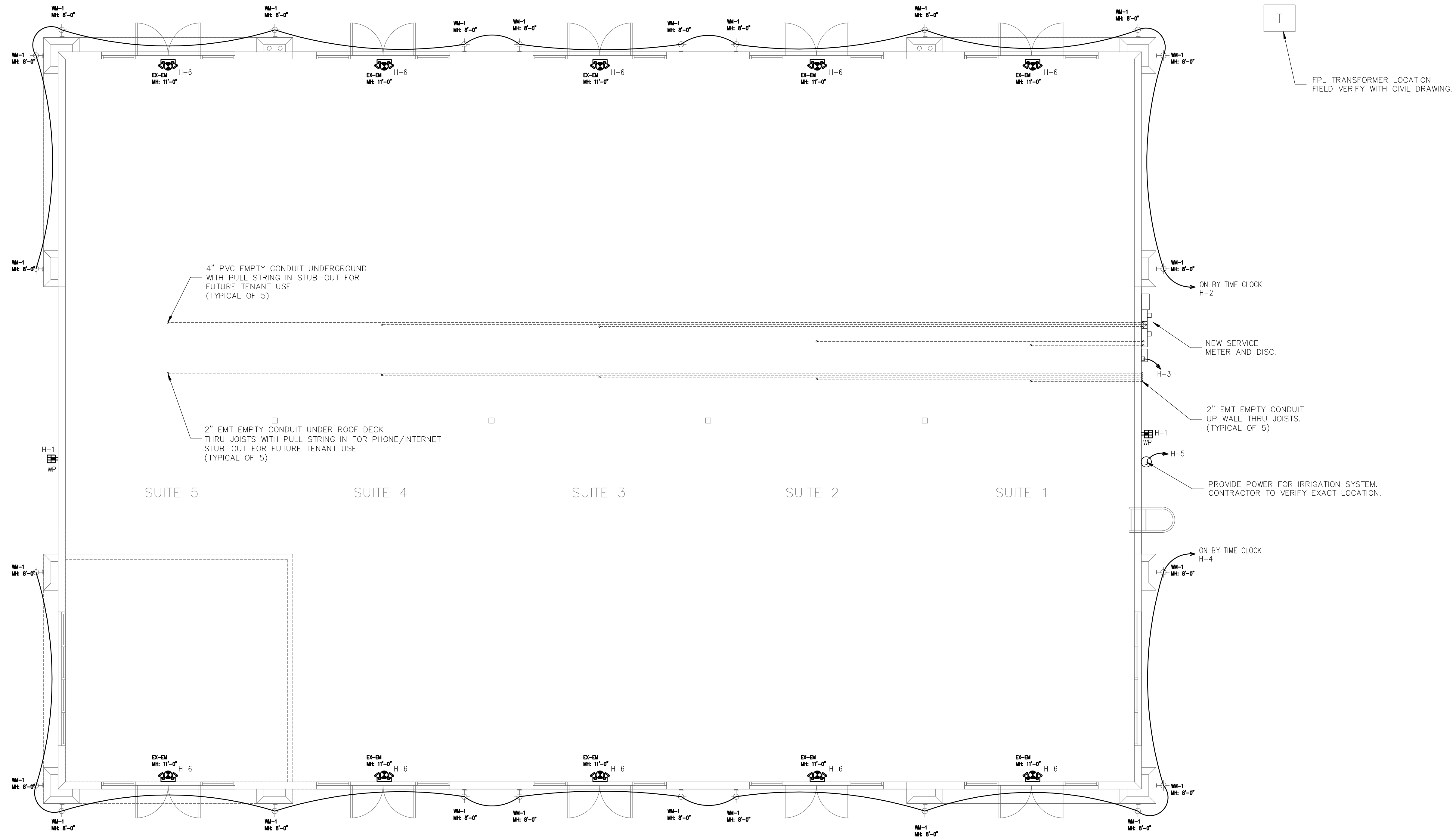
ROOF CURB ACCESSORY #	A	CONNECTOR PKG. ACC.	GAS CONNECTION TYPE	GAS FITTING	POWER WIRING FITTING	CONTROL WIRING FITTING	ACCESSORY CONVENIENCE OUTLET WIRING CONNECTOR
CRBFCURB001A01	14" [356]	CRBTMPWR001A01	THRU THE CURB	3/4" [19] NPT	3/4" [19] NPT	1/2" [12.7] NPT	1/2" [12.7] NPT
CRBFCURB002A01	24" [610]	CRBTMPWR003A01	THRU THE BOTTOM	1/2" [12.7] NPT			

NOTES:
 1. ROOFCURB ACCESSORY IS SHIPPED DISASSEMBLED.
 2. INSULATED PANELS: 25.4 [1"] THK. POLYURETHANE FOAM, 44.6 [1-3/4"] DENSITY.
 3. DIMENSIONS IN [] ARE IN MILLIMETERS.
 4. ROOFCURB: 16 GAGE STEEL.
 5. ATTACH DUCTWORK TO CURB. (FLANGES OF DUCT REST ON CURB).
 6. SERVICE CLEARANCE 4 FEET ON EACH SIDE.
 7. DIRECTION OF AIR FLOW.
 8. CONNECTOR PACKAGE CRBTMPWR001A01 IS FOR THRU-THE-CURB GAS TYPE PACKAGE CRBTMPWR003A01 IS FOR THRU-THE-BOTTOM TYPE GAS CONNECTIONS.

CERTIFIED DRAWING

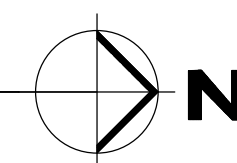
DRAWING RELEASE LEVEL: PRODUCTION		UNLESS OTHERWISE SPECIFIED TOLERANCES ARE:	
1/8" ANGLES	± 0.015"	1/8" DIMS	± 0.010"
PRODUCTION	± 0.010"	1/4" DIMS	± 0.010"
	± 0.010"	3/4" DIMS	± 0.010"
	± 0.010"	1" DIMS	± 0.010"
	± 0.010"	2" DIMS	± 0.010"
	± 0.010"	3" DIMS	± 0.010"
	± 0.010"	4" DIMS	± 0.010"
	± 0.010"	6" DIMS	± 0.010"
	± 0.010"	8" DIMS	± 0.010"
	± 0.010"	10" DIMS	± 0.010"
	± 0.010"	12" DIMS	± 0.010"
	± 0.010"	14" DIMS	± 0.010"
	± 0.010"	16" DIMS	± 0.010"
	± 0.010"	18" DIMS	± 0.010"
	± 0.010"	20" DIMS	± 0.010"
	± 0.010"	24" DIMS	± 0.010"
	± 0.010"	30" DIMS	± 0.010"
	± 0.010"	36" DIMS	± 0.010"
	± 0.010"	42" DIMS	± 0.010"
	± 0.010"	48" DIMS	± 0.010"
	± 0.010"	54" DIMS	± 0.010"
	± 0.010"	60" DIMS	± 0.010"
	± 0.010"	72" DIMS	± 0.010"
	± 0.010"	84" DIMS	± 0.010"
	± 0.010"	96" DIMS	± 0.010"
	± 0.010"	108" DIMS	± 0.010"
	± 0.010"	120" DIMS	± 0.010"
	± 0.010"	132" DIMS	± 0.010"
	± 0.010"	144" DIMS	± 0.010"
	± 0.010"	156" DIMS	± 0.010"
	± 0.010"	168" DIMS	± 0.010"
	± 0.010"	180" DIMS	± 0.010"
	± 0.010"	192" DIMS	± 0.010"
	± 0.010"	204" DIMS	± 0.010"
	± 0.010"	216" DIMS	± 0.010"
	± 0.010"	228" DIMS	± 0.010"
	± 0.010"	240" DIMS	± 0.010"
	± 0.010"	252" DIMS	± 0.010"
	± 0.010"	264" DIMS	± 0.010"
	± 0.010"	276" DIMS	± 0.010"
	± 0.010"	288" DIMS	± 0.010"
	± 0.010"	300" DIMS	± 0.010"
	± 0.010"	312" DIMS	± 0.010"
	± 0.010"	324" DIMS	± 0.010"
	± 0.010"	336" DIMS	± 0.010"
	± 0.010"	348" DIMS	± 0.010"
	± 0.010"	360" DIMS	± 0.010"
	± 0.010"	372" DIMS	± 0.010"
	± 0.010"	384" DIMS	± 0.010"
	± 0.010"	396" DIMS	± 0.010"
	± 0.010"	408" DIMS	± 0.010"
	± 0.010"	420" DIMS	± 0.010"
	± 0.010"	432" DIMS	± 0.010"
	± 0.010"	444" DIMS	± 0.010"
	± 0.010"	456" DIMS	± 0.010"
	± 0.010"	468" DIMS	± 0.010"
	± 0.010"	480" DIMS	± 0.010"
	± 0.010"	492" DIMS	± 0.010"
	± 0.010"	504" DIMS	± 0.010"
	± 0.010"	516" DIMS	± 0.010"
	± 0.010"	528" DIMS	± 0.010"
	± 0.010"	540" DIMS	± 0.010"
	± 0.010"	552" DIMS	± 0.010"
	± 0.010"	564" DIMS	± 0.010"
	± 0.010"	576" DIMS	± 0.010"
	± 0.010"	588" DIMS	± 0.010"
	± 0.010"	600" DIMS	± 0.010"
	± 0.010"	612" DIMS	± 0.010"
	± 0.010"	624" DIMS	± 0.010"
	± 0.010"	636" DIMS	± 0.010"
	± 0.010"	648" DIMS	± 0.010"
	± 0.010"	660" DIMS	± 0.010"
	± 0.010"	672" DIMS	± 0.010"
	± 0.010"	684" DIMS	± 0.010"
	± 0.010"	696" DIMS	± 0.010"
	± 0.010"	708" DIMS	± 0.010"
	± 0.010"	720" DIMS	± 0.010"
	± 0.010"	732" DIMS	± 0.010"
	± 0.010"	744" DIMS	± 0.010"
	± 0.010"	756" DIMS	± 0.010"
	± 0.010"	768" DIMS	± 0.010"
	± 0.010"	780" DIMS	± 0.010"
	± 0.010"	792" DIMS	± 0.010"
	± 0.010"	804" DIMS	± 0.010"
	± 0.010"	816" DIMS	± 0.010"
	± 0.010"	828" DIMS	± 0.010"
	± 0.010"	840" DIMS	± 0.010"
	± 0.010"	852" DIMS	± 0.010"
	± 0.010"	864" DIMS	± 0.010"
	± 0.010"	876" DIMS	± 0.010"
	± 0.010"	888" DIMS	± 0.010"
	± 0.010"	900" DIMS	± 0.010"
	± 0.010"	912" DIMS	± 0.010"
	± 0.010"	924" DIMS	± 0.010"
	± 0.010"	936" DIMS	± 0.010"
	± 0.010"	948" DIMS	± 0.010"
	± 0.010"	960" DIMS	± 0.010"
	± 0.010"	972" DIMS	± 0.010"
	± 0.010"	984" DIMS	± 0.010"
	± 0.010"	996" DIMS	± 0.010"
	± 0.010"	1008" DIMS	± 0.010"
	± 0.010"	1020" DIMS	± 0.010"
	± 0.010"	1032" DIMS	± 0.010"
	± 0.010"	1044" DIMS	± 0.010"
	± 0.010"	1056" DIMS	± 0.010"
	± 0.010"	1068" DIMS	± 0.010"
	± 0.010"	1080" DIMS	± 0.010"
	± 0.010"	1092" DIMS	± 0.010"
	± 0.010"	1104" DIMS	± 0.010"
	± 0.010"	1116" DIMS	± 0.010"
	± 0.010"	1128" DIMS	± 0.010"
	± 0.010"	1140" DIMS	± 0.010"
	± 0.010"	1152" DIMS	± 0.010"
	± 0.010"	1164" DIMS	± 0.010"
	± 0.010"	1176" DIMS	± 0.010"
	± 0.010"	1188" DIMS	± 0.010"
	± 0.010"	1200" DIMS	± 0.010"
	± 0.010"	1212" DIMS	± 0.010"
	± 0.010"	1224" DIMS	± 0.010"
	± 0.010"	1236" DIMS	± 0.010"
	± 0.010"	1248" DIMS	± 0.010"
	± 0.010"	1260" DIMS	± 0.010"
	± 0.010"	1272" DIMS	± 0.010"
	± 0.010"	1284" DIMS	± 0.010"
	± 0.010"	1296" DIMS	± 0.010"
	± 0.010"	1308" DIMS	± 0.010"
	± 0.010"	1320" DIMS	± 0.010"
	± 0.010"	1332" DIMS	± 0.010"
	± 0.010"	1344" DIMS	± 0.010"
	± 0.010"	1356" DIMS	± 0.010"
	± 0.010"	1368" DIMS	± 0.010"
	± 0.010"	1380" DIMS	± 0.010"
	± 0.010"	1392" DIMS	± 0.010"
	± 0.010"	1404" DIMS	± 0.010"
	± 0.010"	1416" DIMS	± 0.010"
	± 0.010"	1428" DIMS	± 0.010"
	± 0.010"	1440" DIMS	± 0.010"
	± 0.010"	1452" DIMS	± 0.010"
	± 0.010"	1464" DIMS	± 0.010"
	± 0.010"	1476" DIMS	± 0.010"
	± 0.010"	1488" DIMS	± 0.010"
	± 0.010"	1500" DIMS	± 0.010"
	± 0.010"	1512" DIMS	± 0.010"
	± 0.010"	1524" DIMS	± 0.010"
	± 0.010"	1536" DIMS	± 0.010"
	± 0.010"	1548" DIMS	± 0.010"
	± 0.010"	1560" DIMS	± 0.010"
	± 0.010"	1572" DIMS	± 0.010"
	± 0.010"	1584" DIMS	± 0.010"
	± 0.010"	1596" DIMS	± 0.010"
	± 0.010"	1608" DIMS	± 0.010"
	± 0.010"	1620" DIMS	± 0.010"
	± 0.010"	1632" DIMS	± 0.010"
	± 0.010"	1644" DIMS	± 0.010"
	± 0.010"	1656" DIMS	± 0.010"
	± 0.010"	1668" DIMS	± 0.010"
	± 0.010"	1680" DIMS	± 0.010"
	± 0.010"	1692" DIMS	± 0.010"
	± 0.010"	1704" DIMS	± 0.010"
	± 0.010"	1716" DIMS	± 0.010"
	± 0.010"	1728" DIMS	± 0.010"
	± 0.010"	1740" DIMS	± 0.010"
	± 0.010"	1752" DIMS	± 0.010"
	± 0.010"	1764" DIMS	± 0.010"
	± 0.010"	1776" DIMS	± 0.010"
	± 0.010"	1788" DIMS	± 0.010"
	± 0.010"	1800" DIMS	± 0.010"
	± 0.010"	1812" DIMS	± 0.010"
	± 0.010"	1824" DIMS	± 0.010"
	± 0.010"	1836" DIMS	± 0.010"
	± 0.010"	1848" DIMS	± 0.010"
	± 0.010"	1860" DIMS	± 0.010"
	± 0.010"	1872" DIMS	± 0.010"
	± 0.010"	1884" DIMS	± 0.010"
	± 0.010"	1896" DIMS	± 0.010"
	± 0.010"	1908" DIMS	± 0.010"
	± 0.010"	1920" DIMS	± 0.010"
	± 0.010"	1932" DIMS	± 0.010"
	± 0.010"	1944" DIMS	± 0.010"
	± 0.010"	1956" DIMS	± 0.010"
	± 0.010"	1968" DIMS	± 0.010"
	± 0.010"	1980" DIMS	± 0.010"
	± 0.010"	1992" DIMS	± 0.010"
	± 0.010"	2004" DIMS	± 0.010"
	± 0.010"	2016" DIMS	± 0.010"
	± 0.010"	2028" DIMS	± 0.010"
	± 0.010"	2040" DIMS	± 0.010"
	± 0.010"	2052" DIMS	± 0.010"
	± 0.010"	2064" DIMS	± 0.010"
	± 0.010"	2076" DIMS	± 0.010"
	± 0.010"	2088" DIMS	± 0.010"
	± 0.010"	2100" DIMS	± 0.010"
	± 0.010"	2112" DIMS	± 0.010"
	± 0.010"	2124" DIMS	± 0.010"
	± 0.010"	2136" DIMS	± 0.010"
	± 0.010"	2148" DIMS	± 0.010"
	± 0.010"	2160" DIMS	± 0.010"
	± 0.010"	2172" DIMS	± 0.010"
	± 0.010"	2184" DIMS	± 0.010"
	± 0.010"	2196" DIMS	± 0.010"
	± 0.010"	2208" DIMS	± 0.010"
	± 0.010"	2220" DIMS	± 0.010"
	± 0.010"	2232" DIMS	± 0.010"
	± 0.010"</		

ELECTRICAL LEGEND	
SYMBOL	DESCRIPTION
	120V, 20A, THREE WAY SWITCH
	120V, 20A, DUPLEX RECEPTACLE
	120V, 20A, GFCI RECEPTACLE
	WALL MOUNTED DECO LIGHT
	JUNCTION BOX
	EMERGENCY LIGHT FIXTURE WITH BATTERY PACK
	COMBO EXIT LIGHT/EMERGENCY LIGHT FIXTURE WITH BATTERY PACK
	FUSE SIZE (NEMA RATING) FRAME SIZE NUMBER OF POLES
	WIRE IN FREE AIR SUPPORTED TO BLDG. STRUCTURE



ELECTRICAL ROOF PLAN

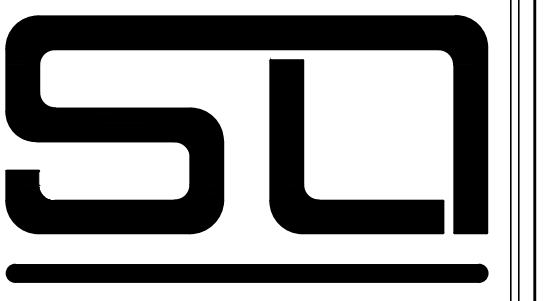
scale: 3/16" = 1'-0"



bd bach design engineers

5130 N. Federal Hwy, Suite 100
 Ft. Lauderdale, FL 33308
 P: (954) 461-4314
 bach@bachengineers.com
 CA#28826

STATE OF FLORIDA
 PROFESSIONAL ENGINEER
 Viet Bach Nguyen, P.E.
 Florida License #69753



SCOTT D. DYER ARCHITECT, P.A.

AA C001929
 AR 0011551
 6671 CONCH COURT
 BOYNTON BEACH, FLORIDA
 33437
 (561) 596-7503

THIS DRAWING, AS AN INSTRUMENT OF SERVICE IS THE PROPERTY OF THE ARCHITECT AND IS NOT TO BE USED ON OTHER WORK, REPRODUCED IN WHOLE OR IN PART, WITHOUT THE ARCHITECT'S EXPRESS WRITTEN CONSENT.

TO THE BEST OF MY KNOWLEDGE, THE DRAWINGS AND SPECIFICATIONS SUBMITTED HEREWITH, COMPLY WITH EXISTING INTERPRETATIONS AND PROVISIONS OF THE APPLICABLE BUILDING CODES IN EFFECT AT THE DATE SHOWN BELOW. NO WARRANTY EXPRESS OR IMPLIED IS HEREBY GIVEN.

COPYRIGHT © 2024
 SCOTT D. DYER ARCHITECT, P.A.
 ALL RIGHTS RESERVED

SCOTT D. DYER AR-0011551

THIS DOCUMENT HAS BEEN DIGITALLY SIGNED AND SEALED BY SCOTT D. DYER ARCHITECT, P.A. USING A DIGITAL SIGNATURE AND DATE. PRINTED COPIES OF THIS DOCUMENT ARE NOT CONSIDERED SIGNED AND SEALED AND ALL SIGNATURES MUST BE VERIFIED ON ANY ELECTRONIC COPIES.

REVISIONS

COMM. NO.
 24-009

DATE
 17 OCTOBER 2024

COMMERCIAL SHELL BUILDING
 CARRETTA II LLC

OUTPARCEL BUILDING "D"

BOYNTON BEACH, FLORIDA

ELECTRICAL ROOF PLAN

SHEET
 E-1

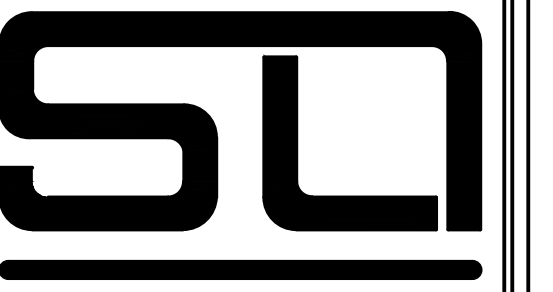
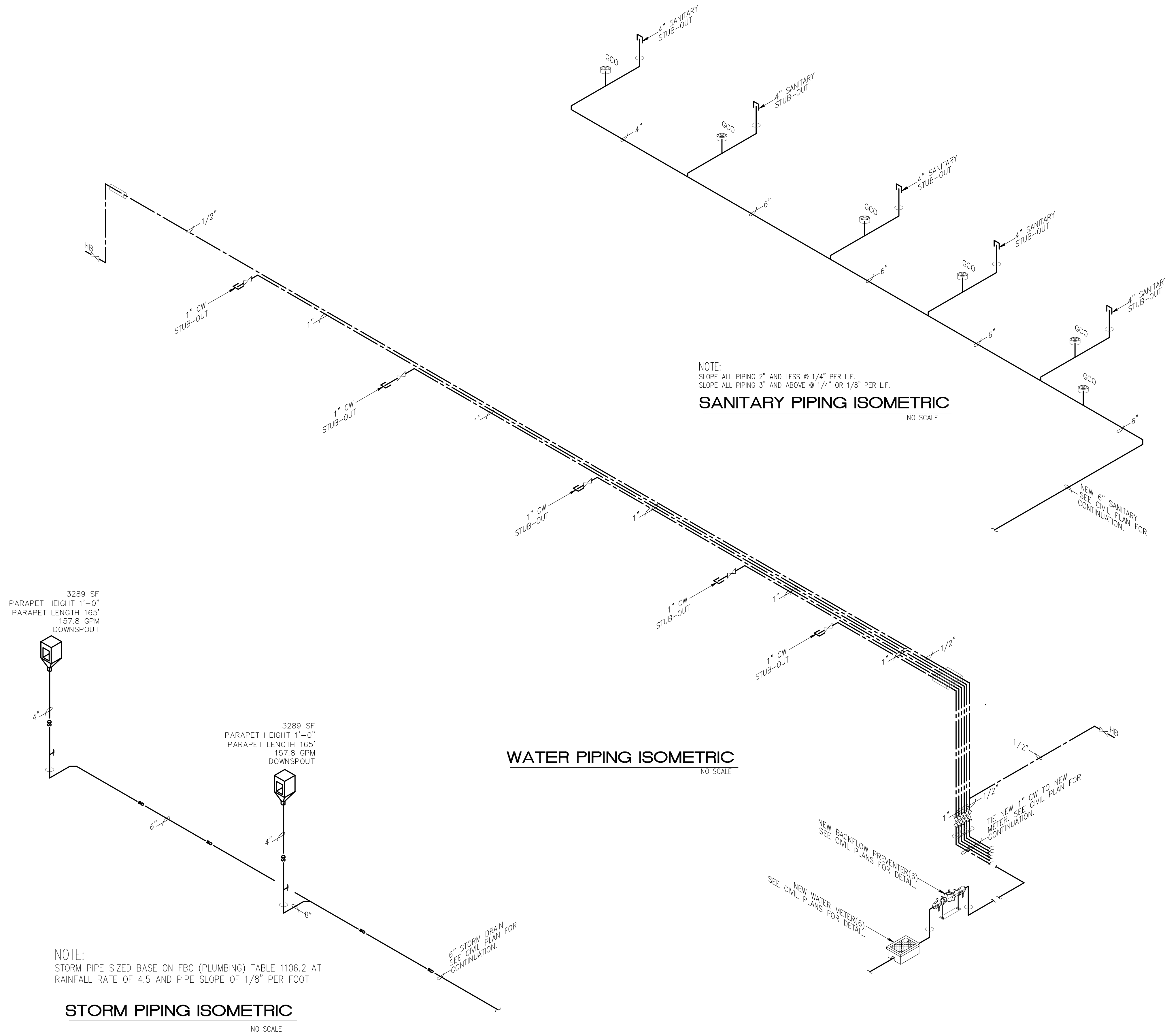
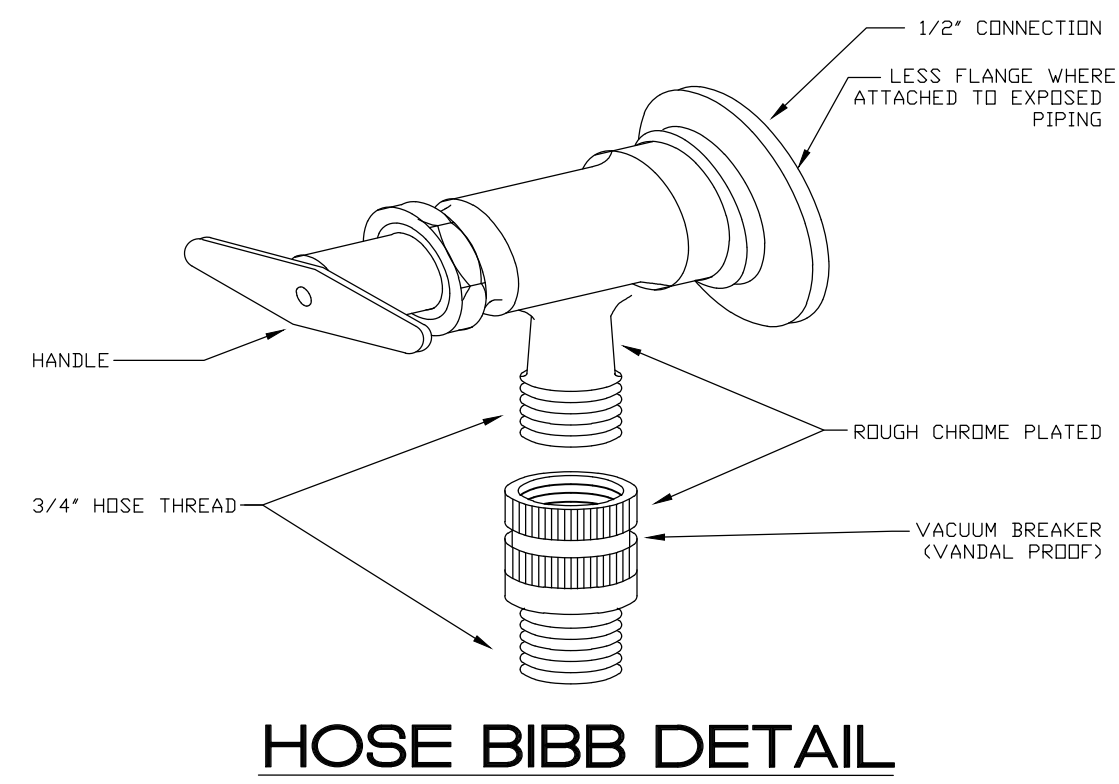
LAST DATE PRINTED 10-17-24 (PRELIM) / 10-22-24 (PRELIM)

GENERAL PLUMBING NOTES:

1. ALL WORK SHALL BE DONE IN ACCORDANCE WITH THE FBC (PLUMBING 2023 8TH ED.) AND WITH ALL APPLICABLE REGULATIONS.
2. DRAWINGS REFER TO ALL DRAWINGS FOR COORDINATION OF THE PLUMBING WORK.
3. ARRANGE AND PAY FOR ALL PERMITS, LICENSES, INSPECTIONS AND TESTS. OBTAIN THE REQUIRED CERTIFICATES AND PRESENT TO OWNER.
4. GUARANTEE: THE COMPLETED INSTALLATION SHALL BE FULLY GUARANTEED AGAINST DEFECTIVE MATERIALS AND/OR IMPROPER WORKMANSHIP FOR A MINIMUM OF ONE YEAR FOR MATERIAL AND LABOR.
5. ALL HORIZONTAL SANITARY PIPING SHALL SLOPE AT 1/8 INCH PER FOOT MINIMUM FOR 3" AND LARGER AND AT 1/4" SLOPE FOR 2" PIPES AND SMALLER.
6. PLUMBING FIXTURES: FIXTURES SHALL BE AS SELECTED BY OWNER AND SHALL BE FURNISHED AND INSTALLED BY THIS CONTRACTOR. FIXTURES SHALL BE COMPLETE WITH DRAINS, TRAPS, SUPPLIES AND ANY OTHER ACCESSORY REQUIRED. FIXTURES AND FAUCETS SHALL COMPLY WITH THE FBC 2023 8TH ED. WATER SAVING STANDARDS.
7. MATERIALS:
 - A. PIPING:
 1. STORM, SOIL, WASTE AND VENT: SANITARY PIPE, PVC, DWV, SCHEDULE 40.
 2. DOMESTIC WATER: COPPER PIPE, TYPE L WITH SWEAT WROUGHT COPPER FITTINGS, TYPE "M" IN CONCEALED SPACES IS ACCEPTABLE ISOLATE PIPING FROM CONCRETE WITH INSULATING MATERIAL.
 3. DOMESTIC WATER SUPPLY ASSEMBLY: STAINLESS STEEL BRAIDED SUPPLY LINE WITH ANGLE SHUT OFF VALVES.
 4. INSULATION: INSULATE ALL HOT WATER AND HOT RETURN WITH 1" FIBERGLASS INSULATION.
8. ALL AUTOMATIC ELECTRIC WATER HEATERS SHALL MEET THE STANDARDS OF THE LATEST ENERGY EFFICIENCY CODE.
9. PIPING TEST AND DISINFECTIONS:
 - A. TEST: ALL SANITARY AND DOMESTIC WATER SUPPLY PIPING SHALL BE TESTED FOR LEAKS BEFORE PIPING IS CONCEALED OR CONNECTED TO EQUIPMENT AND PLUMBING FIXTURES.
 - B. DISINFECTION: ALL DOMESTIC WATER PIPING SHALL BE DISINFECTED BY INTRODUCING A SOLUTION OF CALCIUM HYPOCHLORITE OF 50 PARTS PER MILLION OF CHLORIDE AND AS PER AWWA STANDARDS.
10. CONTRACTOR SHALL COORDINATE EXACT LOCATION OF SANITARY, AND DOMESTIC WATER PIPING BEFORE STARTING ANY WORK. NOTIFY ARCHITECT/ENGINEER OF ANY DEVIATIONS FROM DESIGN DRAWINGS.

PLUMBING SYMBOL LEGEND

SYMBOL	DESCRIPTION
----	SANITARY LINE
----	VENT LINE
CD	CONDENSATE LINE
---	GATE VALVE
---	COLD WATER LINE
---	HOT WATER LINE
P-	PLUMBING FIXTURE DESIGNATION
FCO	FLUSH CLEAN OUT
⊥	FLOOR PENETRATION
⊥	AIR CHAMBER
WCO	WALL CLEANOUT
VTR	VENT THRU ROOF



SCOTT D. DYER ARCHITECT, P.A.

AA C001929
AR 0011551
6671 CONCH COURT
BOYNTON BEACH, FLORIDA
33437
(561) 596-7503

THIS DRAWING, AS AN INSTRUMENT OF SERVICE IS THE PROPERTY OF THE ARCHITECT AND IS NOT TO BE USED ON OTHER WORK, REPRODUCED IN WHOLE OR IN PART, WITHOUT THE ARCHITECT'S EXPRESS WRITTEN CONSENT.

TO THE BEST OF MY KNOWLEDGE, THE DRAWINGS AND SPECIFICATIONS SUBMITTED HERewith, COMPLY WITH EXISTING INTERPRETATIONS AND PROVISIONS OF THE APPLICABLE BUILDING CODES IN EFFECT AT THE DATE SHOWN BELOW. NO WARRANTY EXPRESS OR IMPLIED IS HEREBY GIVEN.

COPYRIGHT © 2024
SCOTT D. DYER ARCHITECT, P.A.
ALL RIGHTS RESERVED

SCOTT D. DYER AR-0011551

THIS DOCUMENT HAS BEEN DIGITALLY SIGNED AND SEALED BY SCOTT D. DYER ARCHITECT, P.A. USING A DIGITAL SIGNATURE AND DATE. PRINTED COPIES OF THIS DOCUMENT ARE NOT CONSIDERED SIGNED AND SEALED AND ALL SIGNATURES MUST BE VERIFIED ON ANY ELECTRONIC COPIES.

REVISIONS

NO.	DESCRIPTION

COMM. NO.
24-009

DATE
17 OCTOBER 2024

COMMERCIAL
SHELL BUILDING
CARRETTA II LLC

OUTPARCEL
BUILDING "D"

BOYNTON BEACH,
FLORIDA

bd bach design engineers

5130 N. Federal Hwy, Suite 300
Ft. Lauderdale, FL 33308
P: (954) 461-4314
bach@bachengineers.com
CA#28826
Viet Bach Nguyen, P.E.
Florida License #69753

SHEET
P-2

LAST DATE PRINTED 10-17-24 (PRELIM) / 10-22-24 (PRELIM)