

2614-2616

TEMPLE HEIGHTS DRIVE
Oceanside, CA 92056

FOR SALE OR LEASE: 28,900 SF
INDUSTRIAL BUILDING



RUSTY WILLIAMS, SIOR
rwilliams@lee-associates.com
(760) 448-2453
CAL BRE LIC# 01390702

CHRIS ROTH
croth@lee-associates.com
(760) 448-2448
CAL BRE LIC# 01789067



PROPERTY FEATURES

- » 28,900 SF Industrial Building
- » Approximately 3,200 SF second office
- » 5 dock high positions
- » 2 grade level doors
- » 19' Clearance
- » IL Zoning
- » 1,200 amps of power

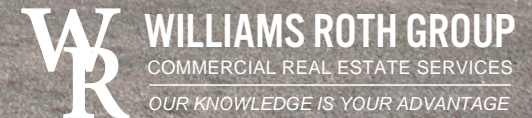
LEASE RATE: \$0.78/SF IG

SALE PRICE: Submit Offer

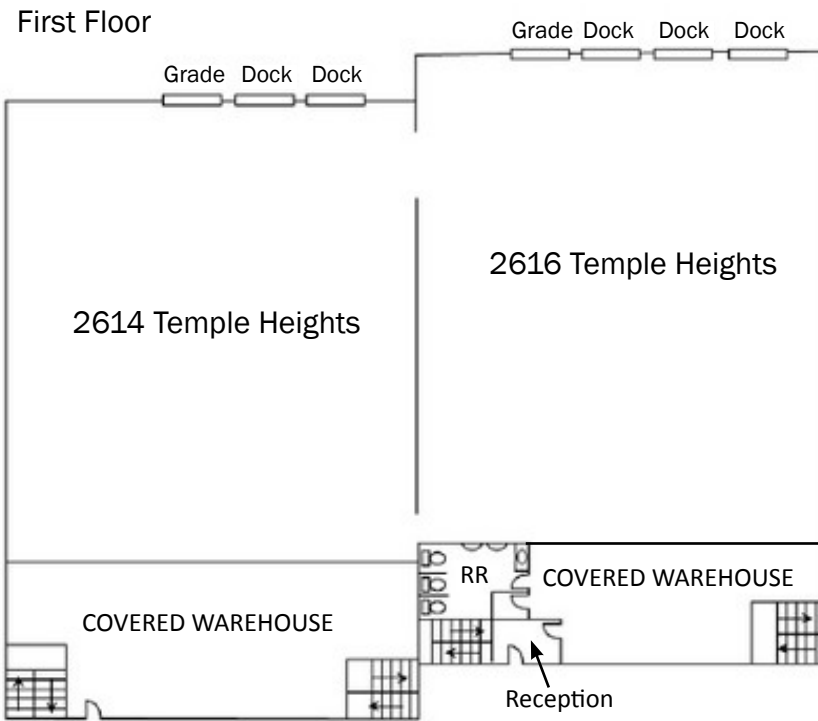


RUSTY WILLIAMS, SIOR
rwilliams@lee-associates.com
(760) 448-2453
CAL BRE LIC# 01390702

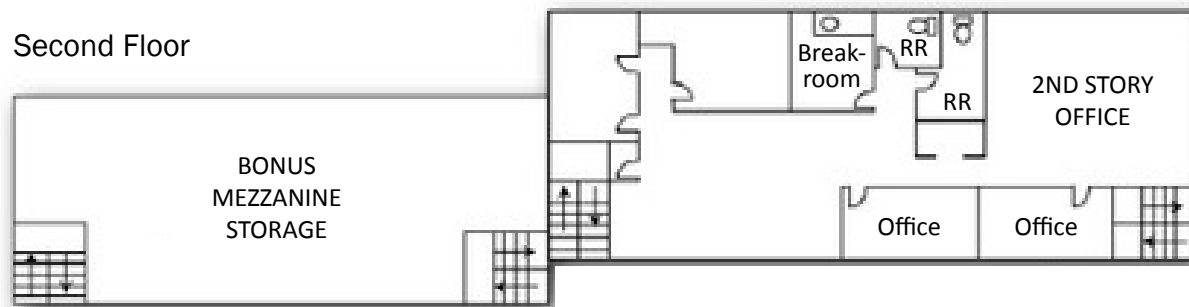
CHRIS ROTH
croth@lee-associates.com
(760) 448-2448
CAL BRE LIC# 01789067



SITE PLAN



Second Floor



LOCATION MAP



2614-2616

TEMPLE HEIGHTS DRIVE
Oceanside, CA 92056

FOR LEASE OR SALE: 28,900 SF
INDUSTRIAL BUILDING

RUSTY WILLIAMS, SIOR
rwilliams@lee-associates.com
(760) 448-2453
CAL BRE LIC# 01390702

CHRIS ROTH
croth@lee-associates.com
(760) 448-2448
CAL BRE LIC# 01789067



Lee & Associates Commercial Real Estate Services, Inc. - NSDC | 1900 Wright
Place, Suite 200, Carlsbad, CA 92008 | P: (760) 929-9700 | F: (760) 929-9977 |
www.lee-associates.com/sandiegonth

No warranty or representation is made to the accuracy of the foregoing information.
Terms of sale or lease and availability are subject to change or withdrawal without notice.

