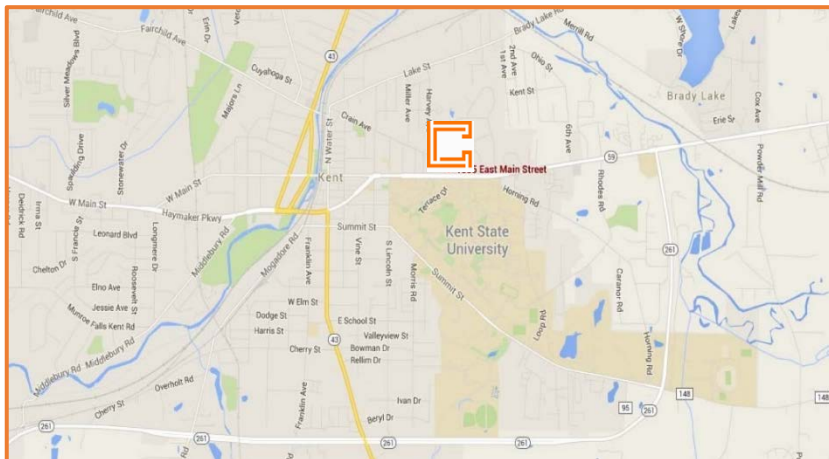
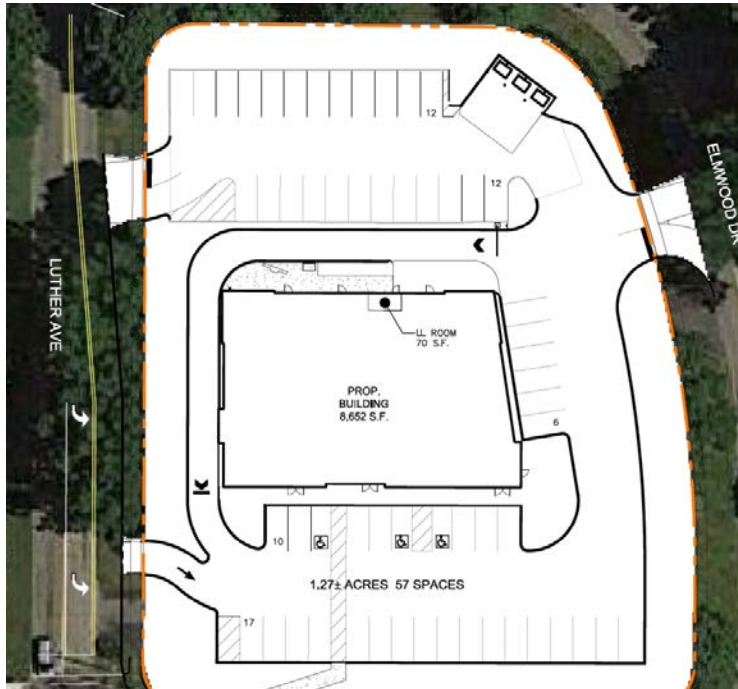


## 1005 East Main Street Kent, Ohio



### PROPERTY DETAILS

- Prime Retail development directly across from Kent State University
- Approximately 8,700 square feet available for Lease

- Route 59 and Luther Avenue with Traffic signal (25,000 cars per day)

### MAJOR AREA RETAILERS

- Near Kent's Acorn Alley Downtown which includes Buffalo Wild Wings and Panini's
- Other retailers include Acme Fresh Market, Starbucks, Chipotle and Huntington National Bank

### Kent State University Facts

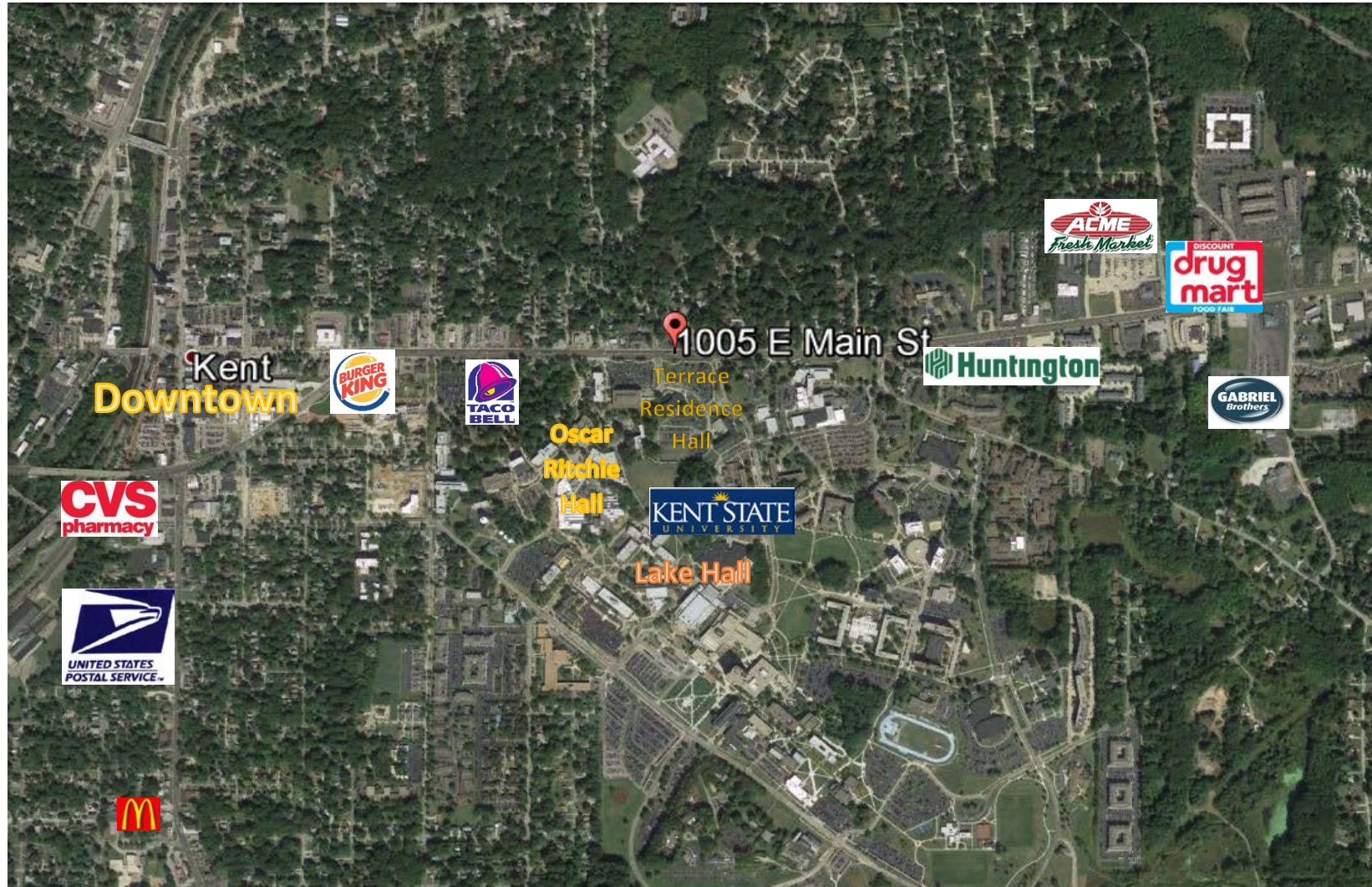
- 27,922 KSU undergrad/graduate students
- 6,500 students living on KSU campus
- 25 Residence Halls and 12 living-learning communities

For more information, please contact:

**Jim Foti**  
Vice President of Leasing  
P: 330-800-2345  
E: [jfoti@LRCRealty.com](mailto:jfoti@LRCRealty.com)

**1585 Frederick Blvd, Akron, Ohio 44320**  
P: **330.253.6958** F: **330.253.5442**  
[www.LRCRealty.com](http://www.LRCRealty.com)

1005 East Main Street  
Kent, Ohio



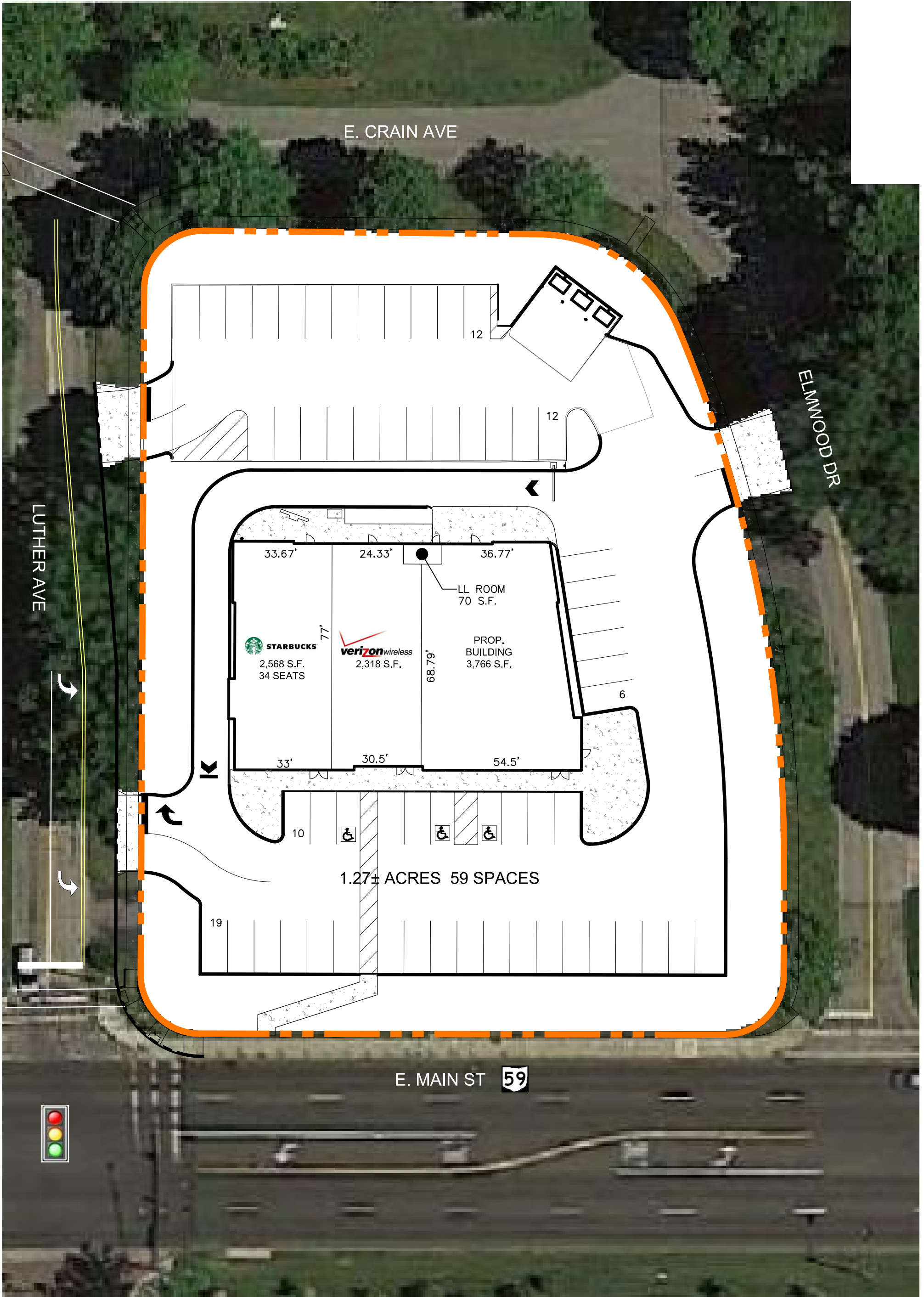
1585 Frederick Blvd, Akron, Ohio 44320  
P: 330.253.6958 F: 330.253.5442  
[www.LRCRealty.com](http://www.LRCRealty.com)

# Kent, Ohio

1005 E. Main St.  
Portage County



0 15' 30'  
SCALE: 1" = 30'



N:\DEV\Ohio Projects\Kent, OH\_1005 E. Main Street (Dubois) CLOSED 2016-6-22\CAD Files\2017-02-24\_Kent, OH - 1005 E. Main St\_Base.dwg User:nate Mar 02, 2017 - 2:21pm

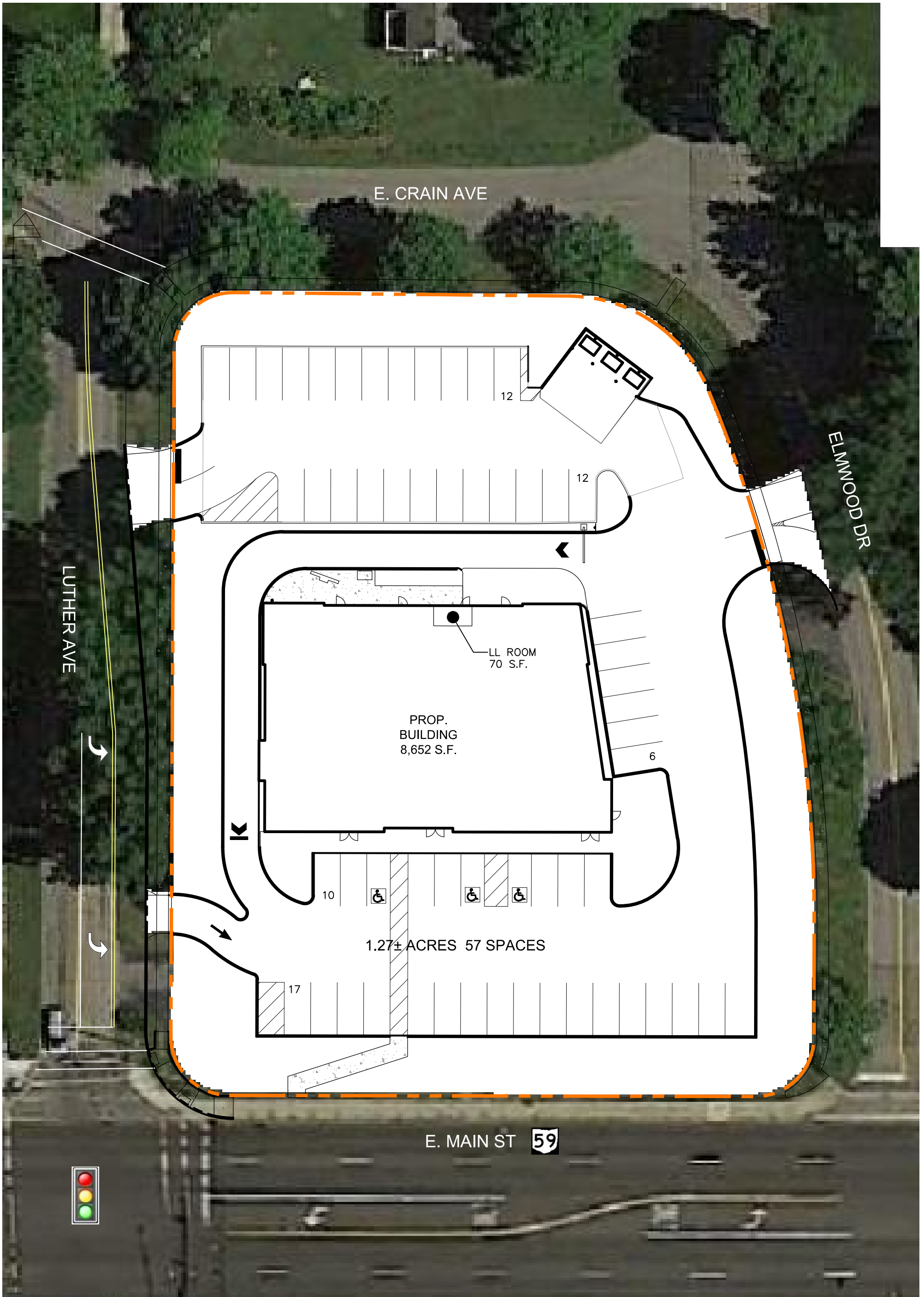
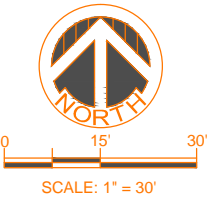


Lease Plan  
LP-2  
3/02/17

1585 Frederick Blvd. • Akron, Ohio 44320  
P: 330.253.6958 • F: 330.253.5242  
www.LRCRealty.com

# Kent, Ohio

1005 E. Main St.  
Portage County



N:\DEV\Ohio Projects\Kent, OH\_1005 E. Main Street (Dubois) CLOSED 2016-6-22\CAD Files\2017-02-24\_Kent, OH - 1005 E. Main St\_Base.dwg User:nate Mar 21, 2017 - 11:13am



## Site Development Plan

S  
3/21/17

1585 Frederick Blvd. • Akron, Ohio 44320  
P: 330.253.6958 • F: 330.253.5242  
www.LRCRealty.com



**1005 East Main Street  
Kent, Ohio  
DEMOGRAPHIC INFORMATION**

Description	1005 E MAIN ST, KENT, OH, 44240-2815: Radius Analysis Area Group: Radius 1.0 mile(s)	1005 E MAIN ST, KENT, OH, 44240-2815: Radius Analysis Area Group: Radius 3.0 mile(s)	1005 E MAIN ST, KENT, OH, 44240-2815: Radius Analysis Area Group: Radius 5.0 mile(s)
	Total	Total	Total
<b>Population</b>			
2022 Projection	17,697	41,094	85,067
2017 Estimate	17,488	40,470	84,029
<b>Households</b>			
2022 Projection	5,680	15,701	33,464
2017 Estimate	5,541	15,343	32,807
<b>Family Households</b>			
2022 Projection	1,799	7,604	20,106
2017 Estimate	1,773	7,448	19,745
<b>2017 Average Household Size</b>	2.09	2.24	2.36
<b>2017 Est. Households by Household Income</b>	5,541	15,343	32,807

**1585 Frederick Blvd, Akron, Ohio 44320**  
**P: 330.253.6958 F: 330.253.5442**  
[www.LRCRealty.com](http://www.LRCRealty.com)



## 1005 East Main Street Kent, Ohio

Income < \$15,000	1,751	3,385	4,854
Income \$15,000 - \$24,999	763	1,641	3,064
Income \$25,000 - \$34,999	687	1,661	3,098
Income \$35,000 - \$49,999	589	1,825	4,325
Income \$50,000 - \$74,999	656	2,205	5,684
Income \$75,000 - \$99,999	351	1,374	3,749
Income \$100,000 - \$124,999	277	1,103	2,862
Income \$125,000 - \$149,999	153	700	1,852
Income \$150,000 - \$199,999	171	803	1,935
Income \$200,000 - \$249,999	82	378	782
Income \$250,000 - \$499,999	43	218	500
Income \$500,000+	17	51	101
<b>2017 Est. Average Household Income</b>	<b>\$48,539</b>	<b>\$64,458</b>	<b>\$72,314</b>
<b>2017 Est. Median Household Income</b>	<b>\$28,727</b>	<b>\$43,095</b>	<b>\$54,673</b>
<b>2017 Est. Median Age</b>	<b>22.7</b>	<b>26.3</b>	<b>34.0</b>
<b>2017 Est. Average Age</b>	<b>29.4</b>	<b>34.2</b>	<b>37.9</b>

**1585 Frederick Blvd, Akron, Ohio 44320**  
**P: 330.253.6958 F: 330.253.5442**  
**[www.LRCRealty.com](http://www.LRCRealty.com)**