

Overview

Floorplan/Site

Photos

For Lease

Property Summary

Professional and medical office space in Zachary, Louisiana in close proximity to the City of Central and Baker. Efficient floor plan consisting of fifteen (15) offices, four (4) restrooms, kitchen, reception area and lobby, file room and private office for an executive. Existing plumbing has been capped and is available in walls for a medical user.

The property is highly visible, easy access via median cuts on Main Street (Hwy. 64), ample parking and pylon signage is available. This strategic location boasts 150ft. +/- of frontage on Main Street. Adjacent tenant is Signature Southern Accents and the business accounts for a high volume of walk-in traffic.

Property Highlights

- #1 School District in the State of Louisiana
- Centrally Located in Heart of Zachary
- Medical Office Space / Professional Office Space
- Recently Renovated!

Available

- 3,000 SF

Tenants

- Signature Southern Accents

Lease Rate

- \$13.00 PSF Modified Gross

Lot Size

- 1.26 Acres



Justin Langlois CCIM

Office: 225-926-4481

Direct: 225-445-6434

jlanglois@stirlingprop.com

Donato Mucciacciaro

Office: 225-926-4481

Direct: 225-329-0281

dmucciacciaro@stirlingprop.com

Troy Burton

Office: 225-926-4481

Direct: 225-588-1256

sodom@stirlingprop.com

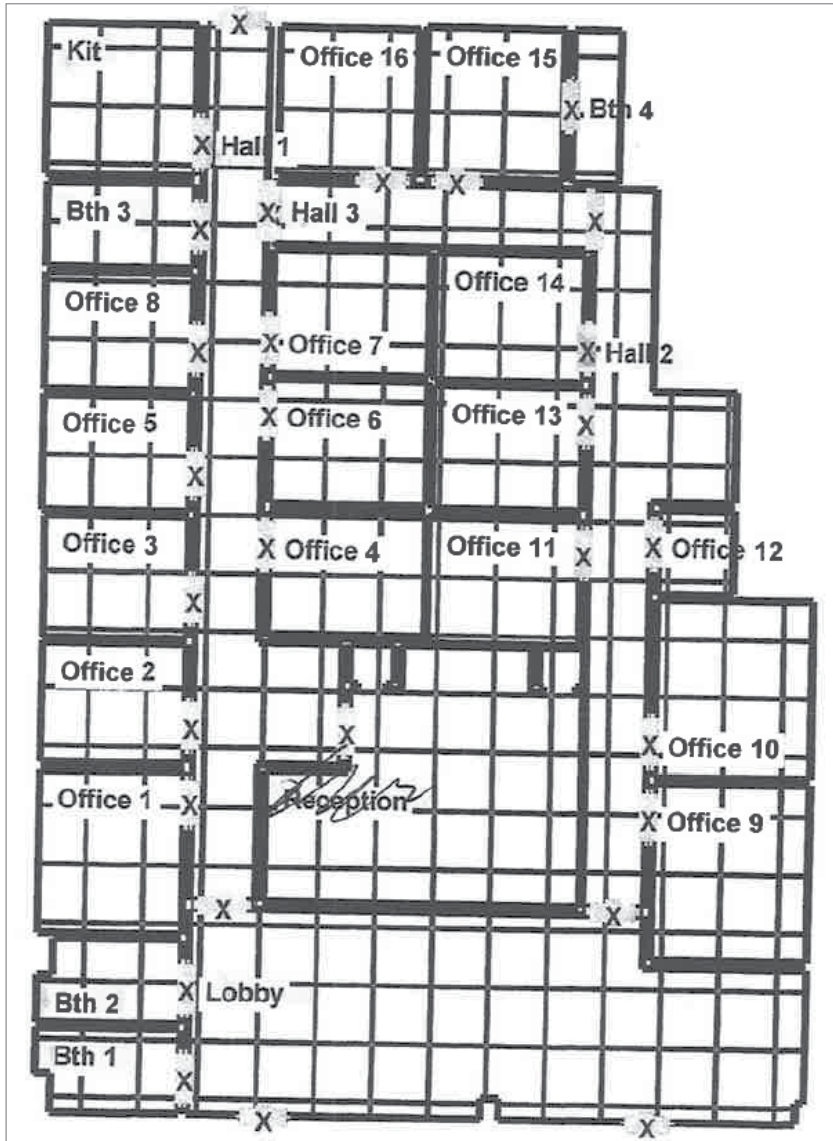
Efficient Office / Medical Space

9305 Main Street, Zachary, LA

Overview

Floorplan/Site

Photos



Justin Langlois CCIM

Office: 225-926-4481

Direct: 225-445-6434

jlanglois@stirlingprop.com

Donato Mucciacciaro

Office: 225-926-4481

Direct: 225-329-0281

dmucciacciaro@stirlingprop.com

Troy Burton

Office: 225-926-4481

Direct: 225-588-1256

sodom@stirlingprop.com

Efficient Office / Medical Space

9305 Main Street, Zachary, LA

Overview

Floorplan/Site

Photos

