

For Lease

Renton Medical Office Space



RCRC Building

723 SW 10th Street, Renton, WA

- Approximately 4,300 RSF with medical clinic build-out
- Potential of expanding to full floor, up to 8,820 RSF
- Outstanding freeway access to I-405, SR-167 & I-5
- Exterior building signage available with excellent exposure to SW Grady Way, with up to 25,000+ cars daily
- Ample parking (4.5 / 1,000 SF)
- Available September 1, 2015
- Lease rate: \$18.00 PSF, NNN



For more information, contact:

Mike George

+1 425 586 5618
mgeorge@nai-psp.com

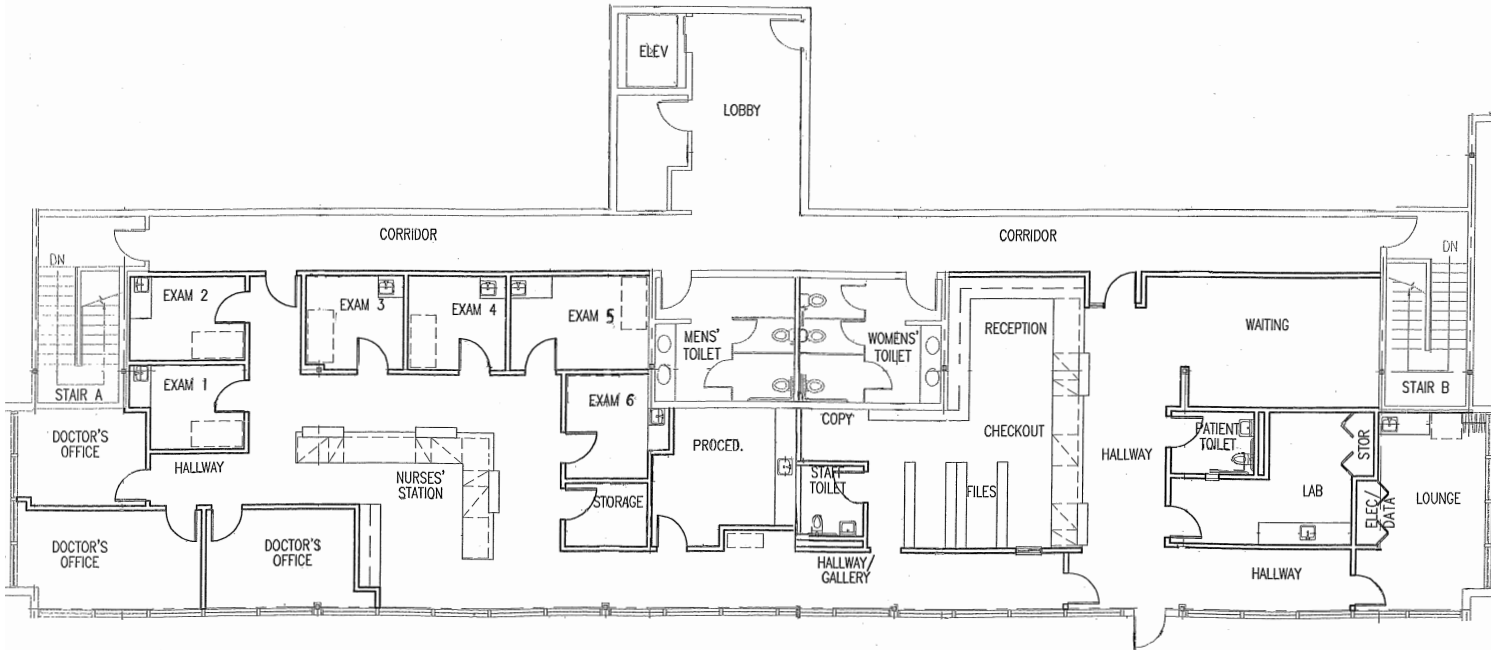
Scott Sulman

+1 425 586 5647
ssulman@nai-psp.com



600 108th Avenue NE Suite 340
Bellevue, Washington 98004
+1 425 586 5600
nai-psp.com

For Lease
RCRC Building
723 SW 10th Street, Renton, WA



Approximately 4,300 SF,
Comprising Of:

- Waiting Room and Patient Restroom
- Reception Area
- Nurses Station
- 6 Private, Plumbed Exam Rooms
- Procedure Room
- Lab
- 3 Private Doctor's Offices
- Storage Room and File Area
- Interior Employee Lounge and Restroom

For Lease
RCRC Building
723 SW 10th Street, Renton, WA



For Lease
RCRC Building
723 SW 10th Street, Renton, WA



600 108th Avenue NE Suite 340
Bellevue, Washington 98004
+1 425 586 5600
nai-psp.com