

# 3 SECOND

## STREET AT HARBORSIDE

RETAIL



CUSHMAN &  
WAKEFIELD



BLACK CREEK GROUP



3,000+ SF OF WATERFRONT RETAIL SPACE WITH OUTDOOR SEATING AREA



## PREMISES

Ground: 3,089 SF  
Mezzanine: 1,722 SF  
Total: 4,811 SF

## ASKING RENT

Upon Request

## NNN

TBD

## POSSESSION

Immediate

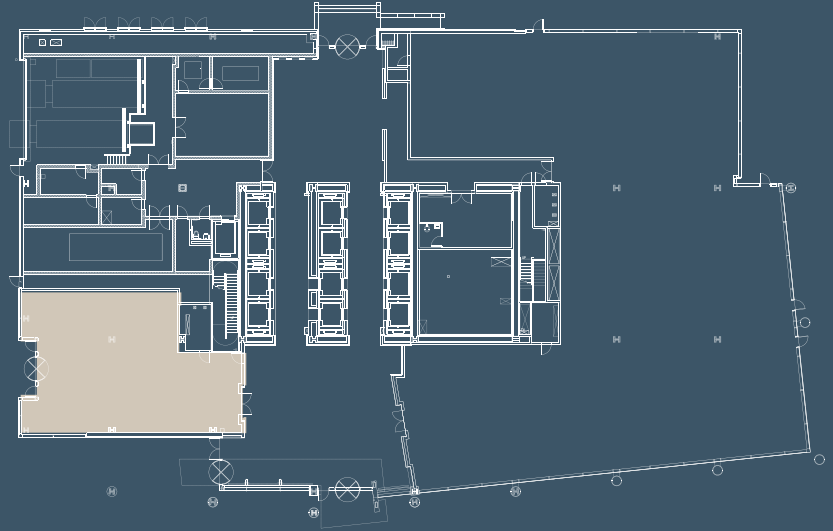
## NEIGHBORS

Lutze Beer Garden, Hudson & Co. Bar & Grill, Whole Foods (coming soon), District Kitchen Food Hall @ Harborside JC, Bright Horizons, Bank of America, CVS Pharmacy, Cycle Bar

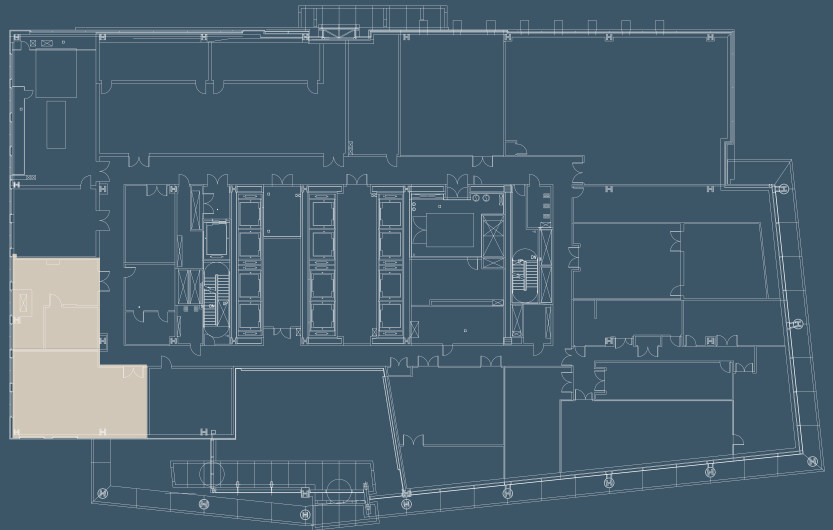
## COMMENTS

- Fully built/equipped restaurant space with venting
- Outdoor seating patio area
- At the base of a 580,000 SF Class A Office Tower with 90% occupancy
- Located on the Hudson River Waterfront
- Adjacent to first class hotel and high-end residential communities

## GROUND



## MEZZANINE





## DEMOGRAPHICS (1 MILE RADIUS)

810,509

POPULATION

379,019

TOTAL  
HOUSEHOLDS

\$152,968

AVERAGE INCOME  
PER HOUSEHOLD

# 3 SECOND STREET AT HARBORSIDE

R E T A I L

**NEIL SETH**

+1 212 841 5063

neil.seth@cushwake.com

**DAVID TOWNES**

+1 201 508 5268

david.townes@cushwake.com

**ALANA FRIEDMAN**

+1 201 508 5258

alana.friedman@cushwake.com



**BLACK CREEK® GROUP**

©2020 CUSHMAN & WAKEFIELD. ALL RIGHTS RESERVED. THE INFORMATION CONTAINED IN THIS COMMUNICATION IS STRICTLY CONFIDENTIAL. THIS INFORMATION HAS BEEN OBTAINED FROM SOURCES BELIEVED TO BE RELIABLE BUT HAS NOT BEEN VERIFIED. NO WARRANTY OR REPRESENTATION, EXPRESS OR IMPLIED, IS MADE AS TO THE CONDITION OF THE PROPERTY (OR PROPERTIES) REFERENCED HEREIN OR AS TO THE ACCURACY OR COMPLETENESS OF THE INFORMATION CONTAINED HEREIN, AND SAME IS SUBMITTED SUBJECT TO ERRORS, OMISSIONS, CHANGE OF PRICE, RENTAL OR OTHER CONDITIONS, WITHDRAWAL WITHOUT NOTICE, AND TO ANY SPECIAL LISTING CONDITIONS IMPOSED BY THE PROPERTY OWNER(S). ANY PROJECTIONS, OPINIONS OR ESTIMATES ARE SUBJECT TO UNCERTAINTY AND DO NOT SIGNIFY CURRENT OR FUTURE PROPERTY PERFORMANCE.