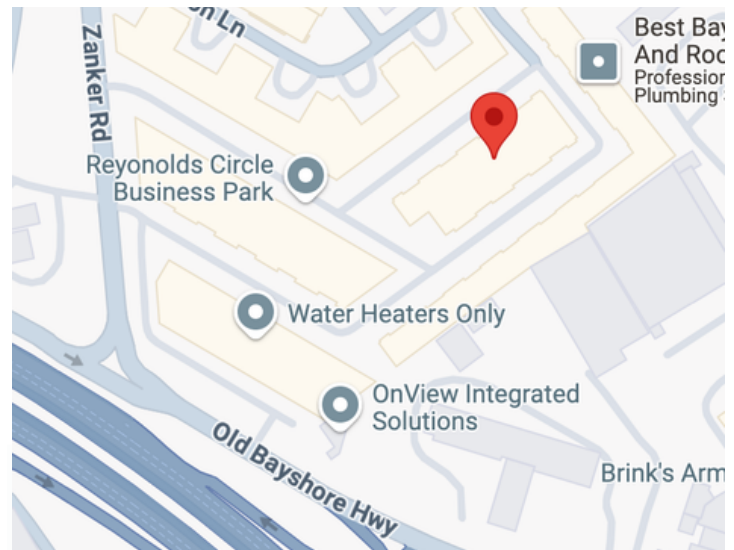


**GOBLE
PROPERTIES**



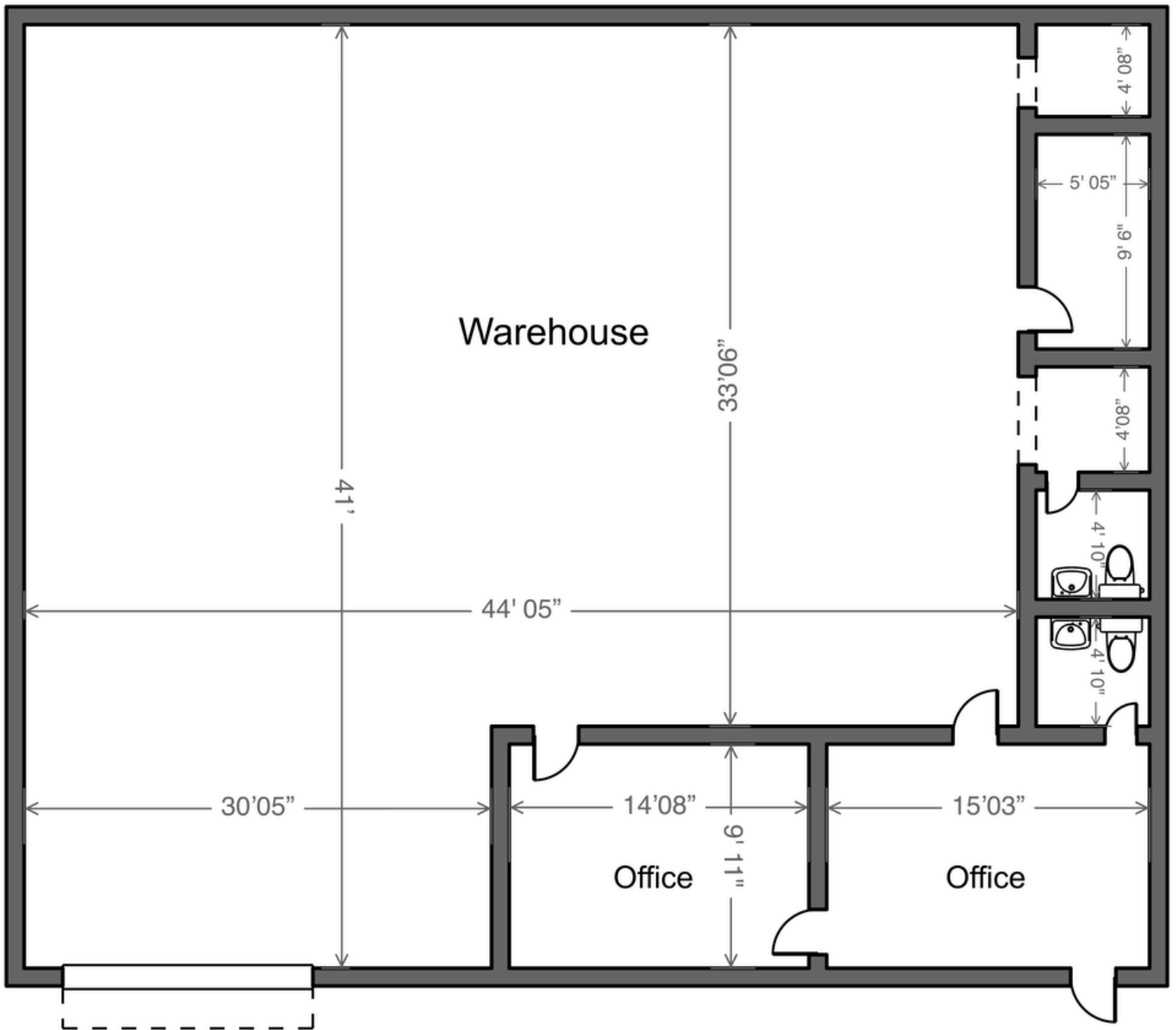
409 REYNOLDS CIRCLE SAN JOSE, CA

Industrial For Lease
2,500 SF



 **GOBLE**
PROPERTIES
GOBLEPROPERTIES.COM

Contact Us
408-452-1754
contact@gobleproperties.com



UNIT HIGHLIGHTS

- **Size: 2,500 SF**
- **Amps: 100**
- **Clear Height: 14'08"**
- **Loading: 1 Grade-Level Roll-Up Door**
- **Office Layout: 2 Private Offices, 1 Break Room, and 2 Storage Closets**
- **Restrooms: 2 Private Restrooms**
- **Parking: 2 Unreserved Spaces (1:1 Ratio)**