

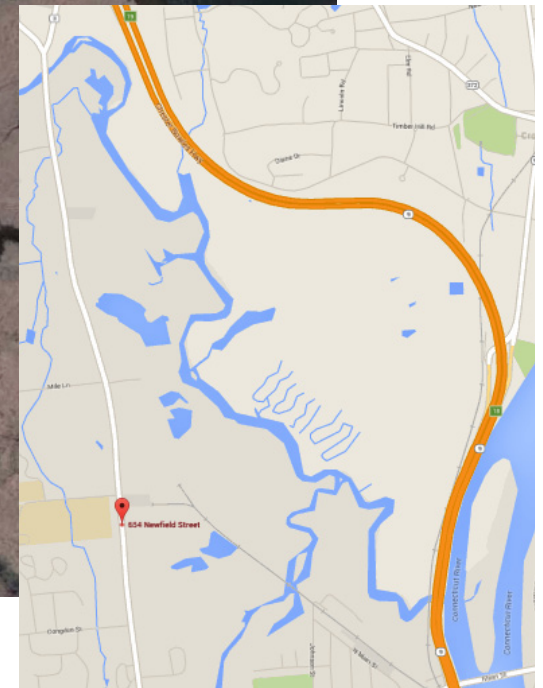
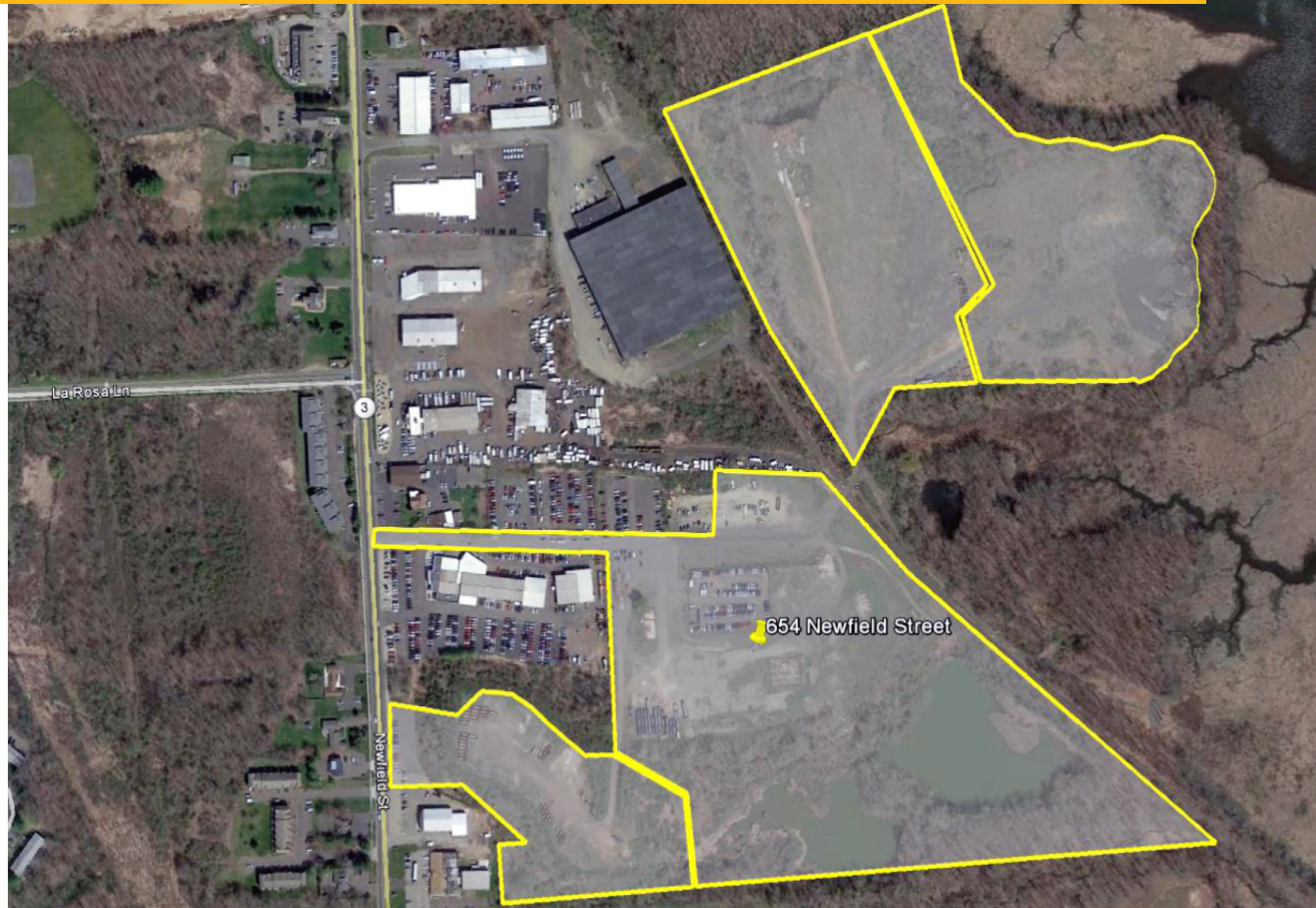
FOR SALE

# 62 ACRES OF LAND

## 654

### NEWFIELD STREET

Middletown, CT



GOMAN+YORK is pleased to present 62 acres of land for sale at 654 Newfield Street, Middletown, CT

[www.gomanyork.com](http://www.gomanyork.com)

**GOMAN+YORK** Property Advisors, LLC.  
1137 Main Street, East Hartford, CT 06108



# FOR SALE 62 ACRES OF LAND

654  
NEWFIELD STREET  
Middletown, CT

## SITE SPECIFICATIONS

- + 654 Newfield Street (State Route 3) is located in an active commercial and industrial corridor with excellent access to State Route 9 at exit 19 and Interstate 91 making it an ideal location for a variety of uses.
- + The average daily traffic count ranges between 12,000 and 16,000.
- + The site is served by Providence & Worcester Railroad
- + Zoned for light and heavy industry, warehousing, commercial development, retail, public buildings and a wide-range of other uses.
- + Almost all of the site is level.
- + It is a short distance to retail and other commercial development in Cromwell and the center of Middletown and Wesleyan University.

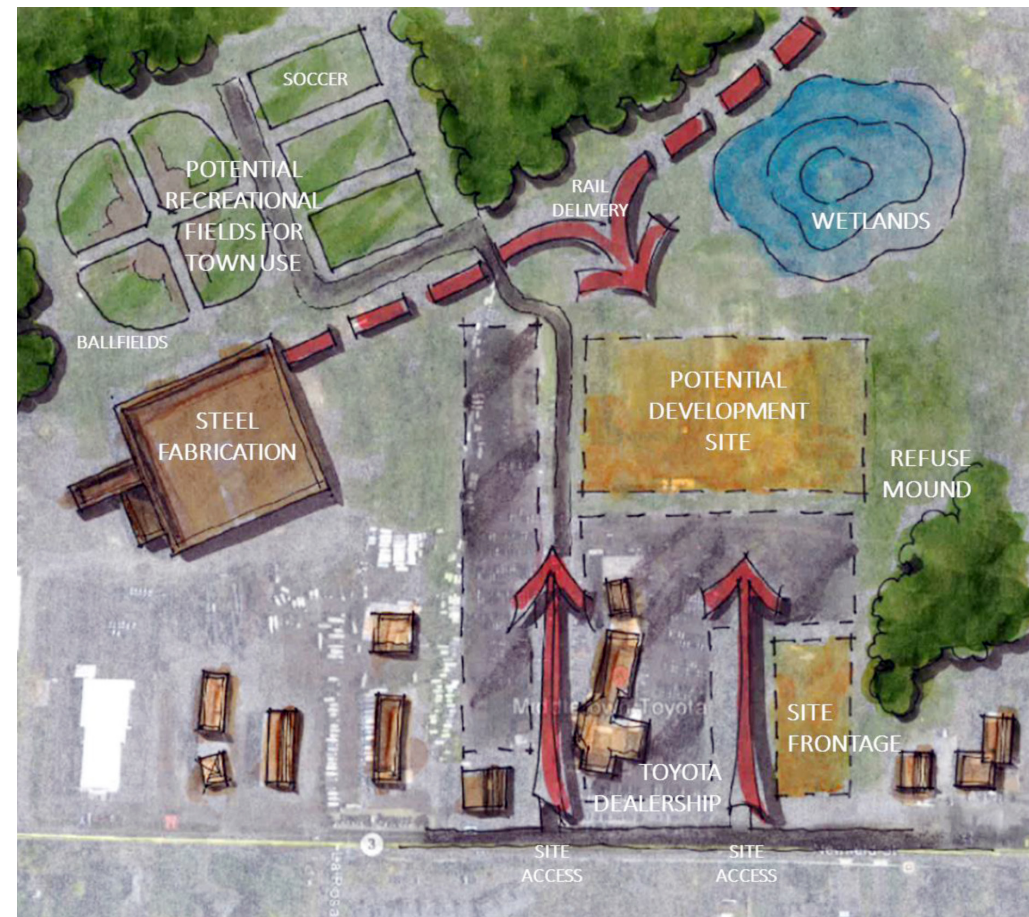
## CONTACT US

**PETER HOLLAND**

1.860.280.8327

pholland@gomanyork.com

## CONCEPTUAL PLAN



©2016 GOMAN+YORK Property Advisors, LLC. The information above has been obtained from sources believed reliable. While we do not doubt its accuracy, we have not verified it and make no guarantee, warranty or representation about it. It is your responsibility to independently confirm its accuracy and completeness. You and your advisors should conduct a careful, independent investigation of the property to determine to your satisfaction the suitability of the property for your needs.

[www.gomanyork.com](http://www.gomanyork.com)

**GOMAN+YORK** Property Advisors, LLC.  
1137 Main Street, East Hartford, CT 06108

