

FOR SALE



19.697± ACRE DEVELOPMENT SITE

600 & 700 Lamar Road
Macon, Bibb County, Georgia 31210

Visible from Interstate 475!



- Located adjacent to I-475 North entrance ramp from Zebulon Road
- Easy access from Zebulon Road
- 19.697± Acres
- Excellent location for Multi-Family Housing or Storage Units
- Topo is sloping
- Zoned PDE
- Water is available adjacent to site; sewer is available on site.
- Property Tax Bill: \$12,692.70 (2014)

SALES PRICE: \$88,000/Per Acre

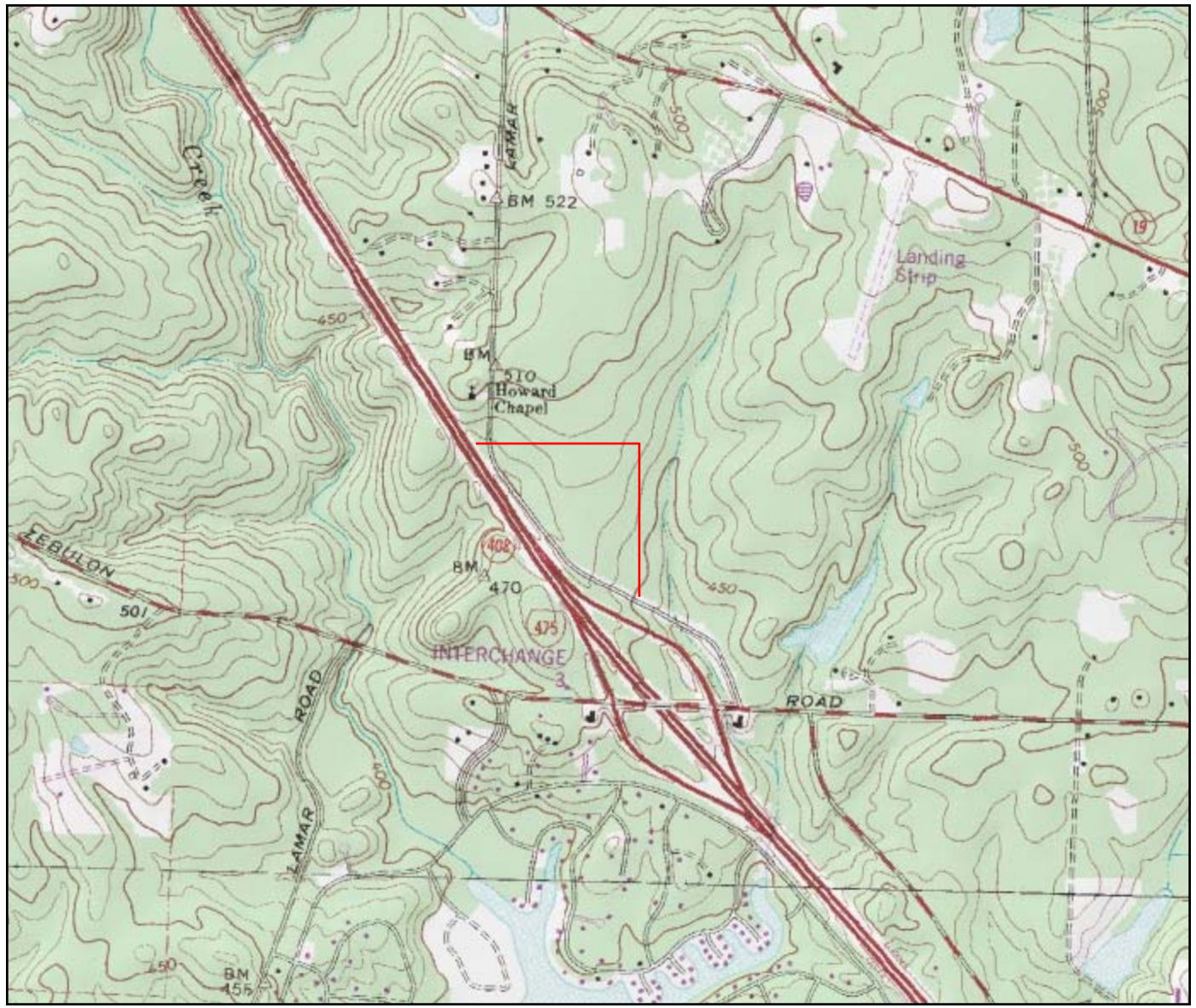
FOR MORE DETAILS CONTACT:

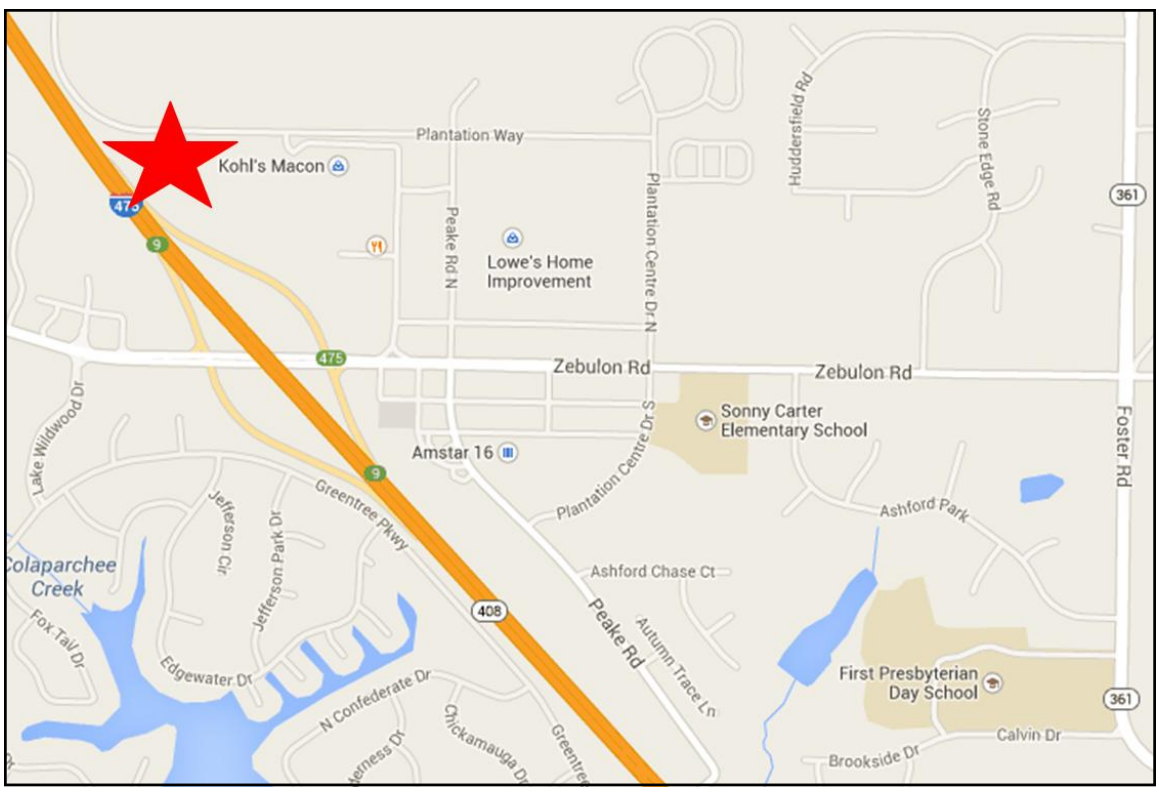
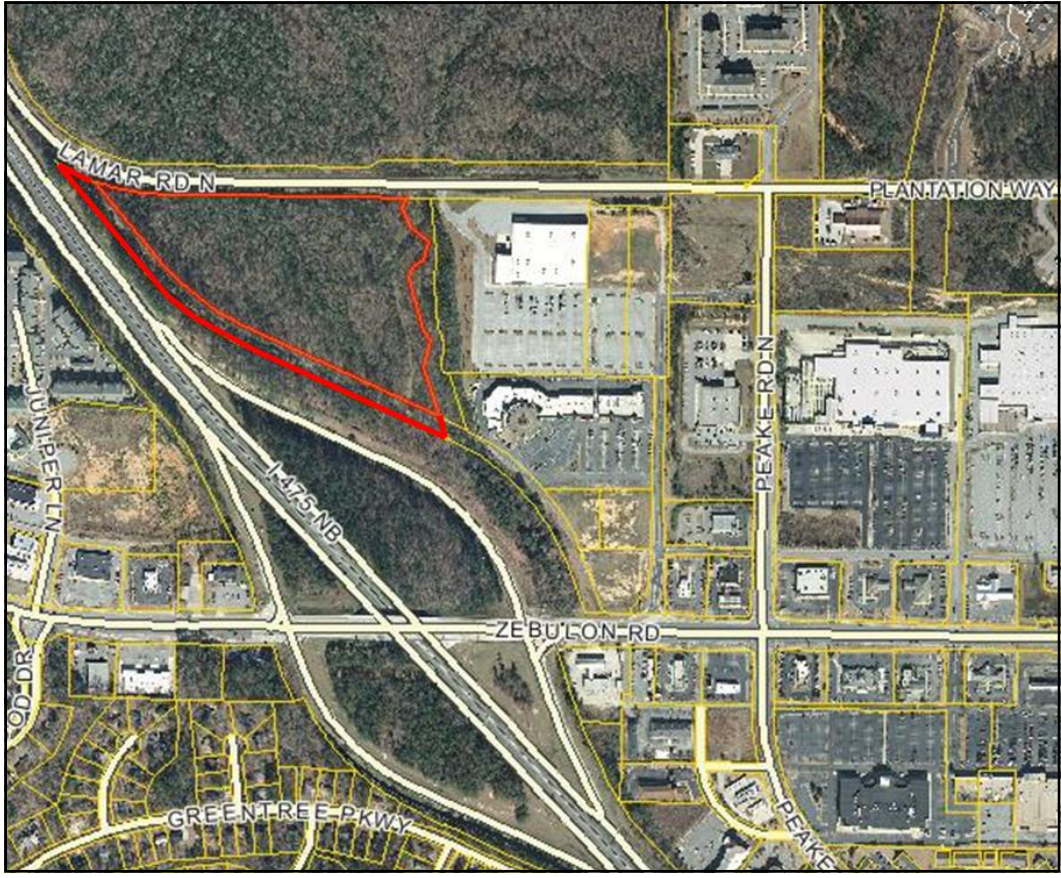
Created 3/25/15

DEIDRA STEWART - Exclusive Agent
deidra@cbcworldwide.com
Coldwell Banker Commercial Eberhardt & Barry Inc.

Main 478-746-8171 Toll Free 800-926-0990
Fax 478-746-1362 Cell 478-508-2652

990 Riverside Drive
Macon, GA 31201







Demographic and Income Profile

Bibb County, GA 2
 Bibb County, GA (13021)
 Geography: County

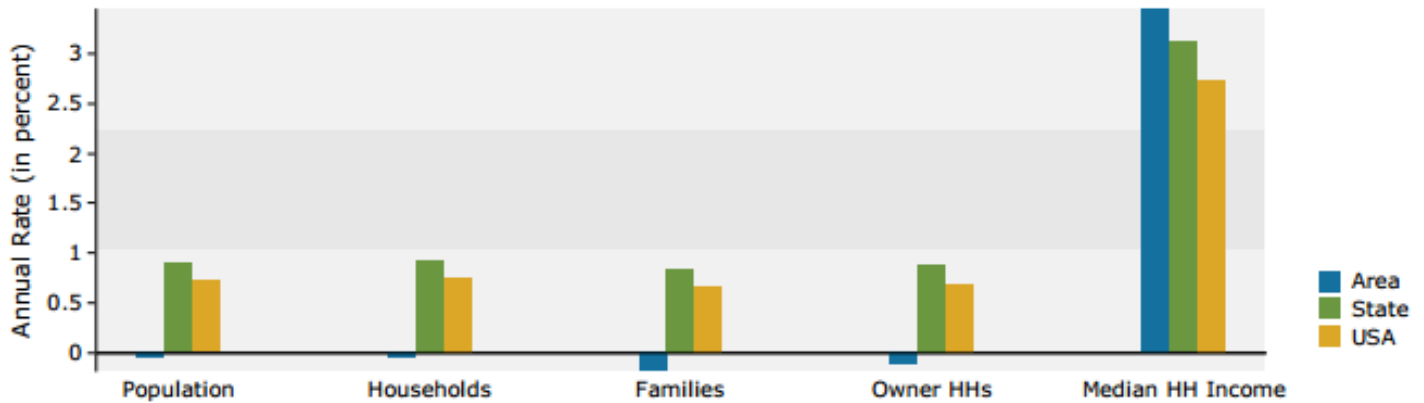
Summary	Census 2010	2014	2019			
Population	155,547	155,791	155,226			
Households	60,295	60,454	60,252			
Families	38,714	38,520	38,155			
Average Household Size	2.48	2.47	2.47			
Owner Occupied Housing Units	33,537	31,894	31,694			
Renter Occupied Housing Units	26,758	28,560	28,558			
Median Age	35.5	36.1	36.9			
Trends: 2014 - 2019 Annual Rate	Area	State	National			
Population	-0.07%	0.90%	0.73%			
Households	-0.07%	0.93%	0.75%			
Families	-0.19%	0.84%	0.66%			
Owner HHs	-0.13%	0.89%	0.69%			
Median Household Income	3.45%	3.11%	2.74%			
Households by Income	2014		2019			
	Number	Percent	Number	Percent		
<\$15,000	13,822	22.9%	13,229	22.0%		
\$15,000 - \$24,999	9,071	15.0%	6,878	11.4%		
\$25,000 - \$34,999	7,003	11.6%	5,894	9.8%		
\$35,000 - \$49,999	7,527	12.5%	7,568	12.6%		
\$50,000 - \$74,999	8,972	14.8%	8,688	14.4%		
\$75,000 - \$99,999	5,436	9.0%	7,148	11.9%		
\$100,000 - \$149,999	5,044	8.3%	5,989	9.9%		
\$150,000 - \$199,999	1,559	2.6%	2,216	3.7%		
\$200,000+	2,020	3.3%	2,642	4.4%		
Median Household Income	\$35,484		\$42,042			
Average Household Income	\$55,189		\$64,816			
Per Capita Income	\$21,766		\$25,378			
Population by Age	Census 2010		2014		2019	
	Number	Percent	Number	Percent	Number	Percent
0 - 4	11,465	7.4%	10,944	7.0%	10,986	7.1%
5 - 9	10,931	7.0%	10,825	6.9%	10,325	6.7%
10 - 14	10,833	7.0%	10,630	6.8%	10,436	6.7%
15 - 19	11,777	7.6%	11,211	7.2%	11,048	7.1%
20 - 24	11,537	7.4%	11,664	7.5%	10,891	7.0%
25 - 34	20,188	13.0%	20,526	13.2%	20,146	13.0%
35 - 44	19,047	12.2%	18,738	12.0%	18,706	12.1%
45 - 54	21,631	13.9%	19,888	12.8%	18,618	12.0%
55 - 64	18,449	11.9%	19,546	12.5%	19,466	12.5%
65 - 74	10,462	6.7%	12,408	8.0%	14,447	9.3%
75 - 84	6,602	4.2%	6,514	4.2%	7,148	4.6%
85+	2,625	1.7%	2,897	1.9%	3,009	1.9%
Race and Ethnicity	Census 2010		2014		2019	
	Number	Percent	Number	Percent	Number	Percent
White Alone	67,199	43.2%	64,762	41.6%	61,153	39.4%
Black Alone	81,116	52.1%	82,701	53.1%	84,163	54.2%
American Indian Alone	332	0.2%	364	0.2%	400	0.3%
Asian Alone	2,531	1.6%	2,861	1.8%	3,299	2.1%
Pacific Islander Alone	120	0.1%	125	0.1%	137	0.1%
Some Other Race Alone	2,014	1.3%	2,512	1.6%	3,233	2.1%
Two or More Races	2,235	1.4%	2,466	1.6%	2,841	1.8%
Hispanic Origin (Any Race)	4,389	2.8%	5,492	3.5%	7,064	4.6%

Data Note: Income is expressed in current dollars.

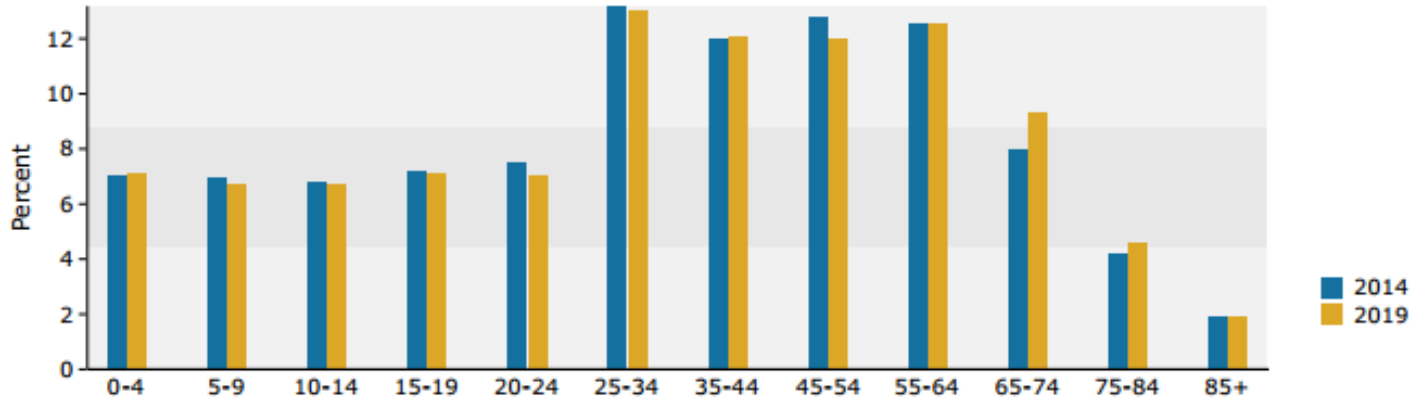
Source: U.S. Census Bureau, Census 2010 Summary File 1. Esri forecasts for 2014 and 2019.

Bibb County, GA 2
 Bibb County, GA (13021)
 Geography: County

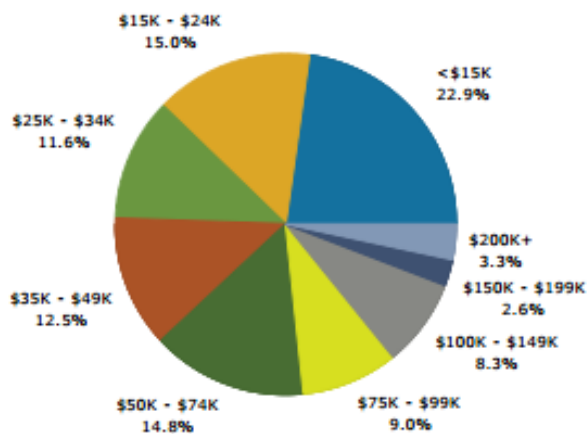
Trends 2014-2019



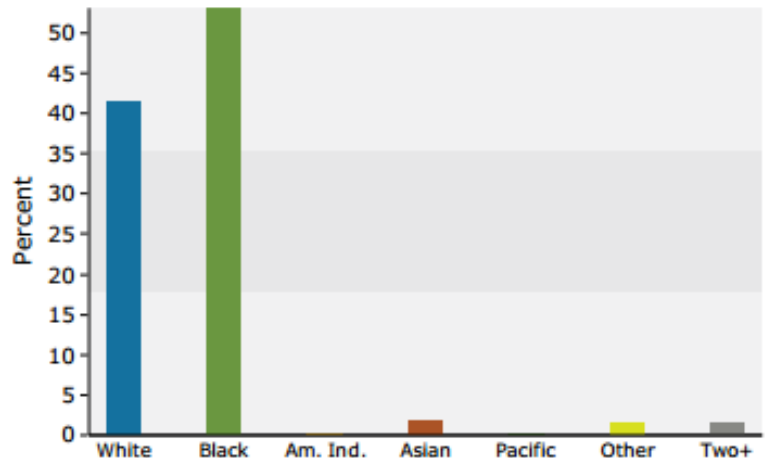
Population by Age



2014 Household Income



2014 Population by Race



2014 Percent Hispanic Origin: 3.5%