

FOR LEASE



MAPLETON INDUSTRIAL FLEX SPACE

1655 W Maple Street | Mapleton, UT 84664

CONTACT US

Justin Irvine

Vice President
+1 801 400 4260
justin.irvine@colliers.com

James Yeates

Vice President
+1 801 995 0049
james.yeates@colliers.com



Colliers

Colliers

2100 Pleasant Grove Blvd., Suite 200
Pleasant Grove, UT 84062
Main: +1 801 947 8300
colliers.com

Property Information

- SHOP 1: 3,000 SF Available
- 1 Office
- 1 Restroom
- 1 Ground level door
- Just off HWY 147
- Available Immediately
- Lease Rate: \$2,800 per month, MG

Interior Photos



Property Overview

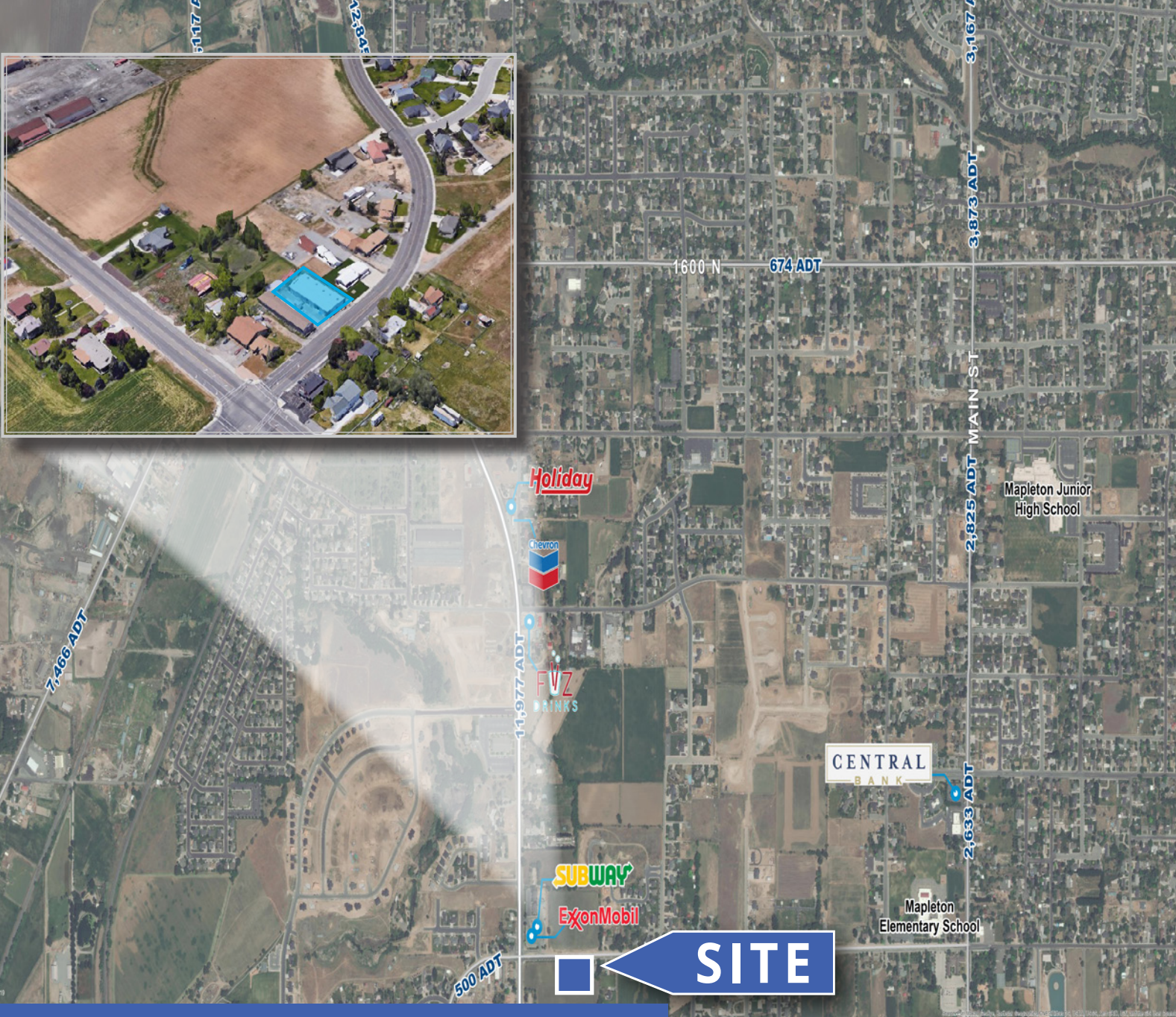


Property Floorplan



Tenant Aerial

1655 W Maple Street | Mapleton, UT



CONTACT US

Justin Irvine

Vice President

+1 801 400 4260

justin.irvine@colliers.com

James Yeates

Vice President

+1 801 995 0049

james.yeates@colliers.com

Colliers
2100 Pleasant Grove Blvd. | Suite 200
Pleasant Grove, UT 84062
Main: +1 801 947 8300
colliers.com



This document has been prepared by Colliers International for advertising and general information only. Colliers International makes no guarantees, representations or warranties of any kind, expressed or implied, regarding the information including, but not limited to, warranties of content, accuracy and reliability. Any interested party should undertake their own inquiries as to the accuracy of the information. Colliers International excludes unequivocally all inferred or implied terms, conditions and warranties arising out of this document and excludes all liability for loss and damages arising there from. This publication is the copyrighted property of Colliers International and/or its licensor(s). ©2026. All rights reserved.