

86 Brook Street Mayfair, London W1

Well Fitted-Out Mayfair Office

Lower Ground Floor - 1,628 sq ft (151 m²)



- Air conditioning
- Excellent natural light
- Fitted out
- Demised WCs
- Smart reception with commissionaire
- Showers and changing facilities
- Bicycle racks



86 Brook Street Mayfair, London W1

Location

The building is prominently located on the corner of Brook Street and Binney Street, a few metres away from Grosvenor Square. Bond Street Underground station is situated a short walk away, providing access to the Central and Jubilee lines, plus the Elizabeth line when this comes into operation.

Description

The available accommodation is located on the lower ground floor (1,628 sq ft) and is accessed via stairs or passenger lift directly from a high quality, manned reception.

The accommodation is fitted out to provide a large meeting room, a smaller meeting room, reception area, single office and open plan space with a demised kitchen & WCs.

Bicycle racks, showers and changing facilities are available to all tenants.

Lease

A new lease is available direct from the landlord.

Rent

£49.50 per sq ft per annum exclusive.

Rates

Estimated for 2020/21 to be £26.14 per sq ft.

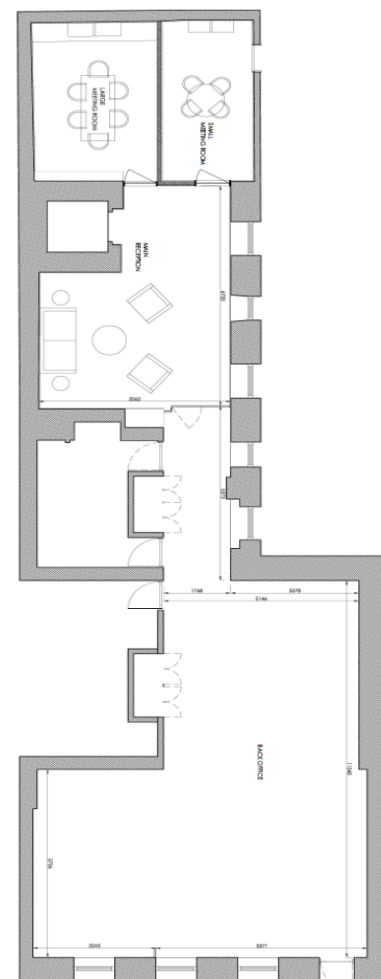
Interested parties are encouraged to make their own enquiries directly with Westminster City Council.

Service Charge

£19.48 per sq ft.

Energy Performance

TBC



not to scale

For further information or to
arrange a viewing please
contact the sole agents:

Crossland Otter Hunt

Phil Frenay | phil@coh.eu
Jess Flather | jessica@coh.eu

06/20