

FOR LEASE > OFFICE SPACE

3000 Sidney Street

PITTSBURGH, PA 15203



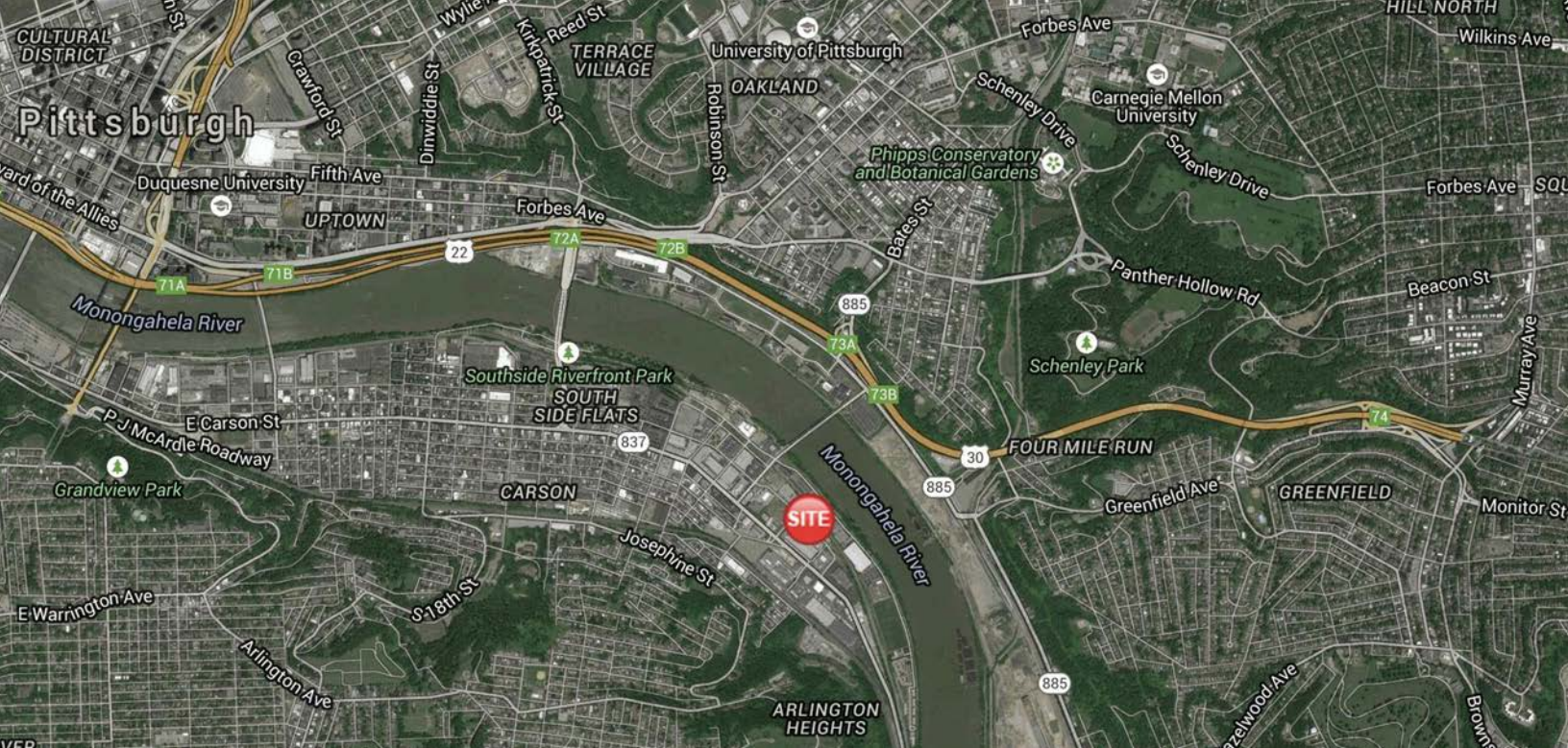
Property Highlights

- > **2nd Floor | 8,180 RSF | Will subdivide**
- > Free on site parking | 2.2 per 1,000 RSF ratio (total of 18 spaces available)
- > Competitive lease rates and terms
- > Secure building
- > Abundant nearby amenities, including restaurants, department stores & riverfront walking trails
- > Convenient location | Immediate access to the Hot Metal Bridge, I-376, Second Avenue & Oakland area
- > Minutes from Downtown
- > Constructed in 2004

PAUL HORAN
FOUNDING PRINCIPAL | PITTSBURGH
OFFICE BROKERAGE
412 321 4200 | EXT. 205
paul.horan@colliers.com

EDWARD LAWRENCE MBA
PRINCIPAL | PITTSBURGH
OFFICE BROKERAGE
412 321 4200 | EXT. 213
ed.lawrence@colliers.com

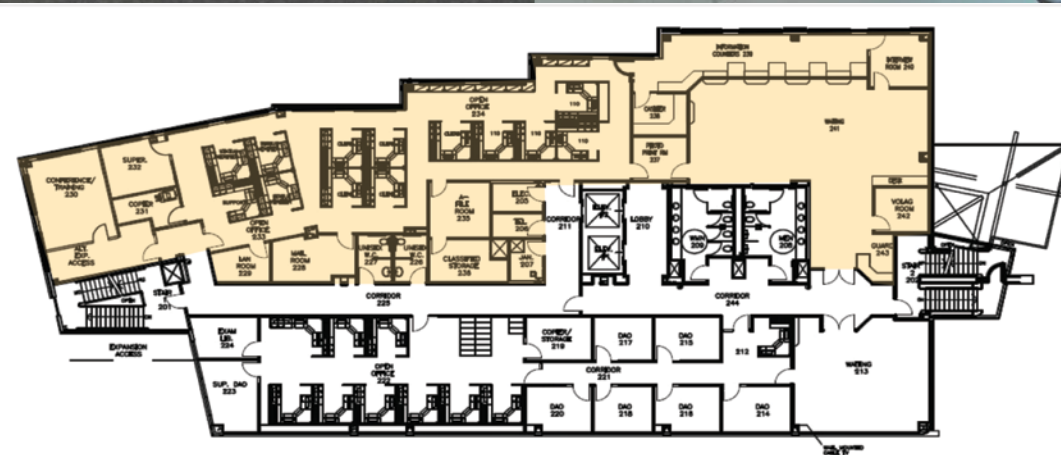
COLLIERS INTERNATIONAL | PITTSBURGH
Two Gateway Center, Suite 125
603 Stanwix Street
Pittsburgh, PA 15222
www.colliers.com



Contact Us

PAUL HORAN
 FOUNDING PRINCIPAL | PITTSBURGH
 OFFICE BROKERAGE
 412 321 4200 | EXT. 205
paul.horan@colliers.com

EDWARD LAWRENCE MBA
 PRINCIPAL | PITTSBURGH
 OFFICE BROKERAGE
 412 321 4200 | EXT. 213
ed.lawrence@colliers.com



2nd Floor | 8,180 SF

COLLIERS INTERNATIONAL | PITTSBURGH
 Two Gateway Center, Suite 125
 603 Stanwix Street
 Pittsburgh, PA 15222
www.colliers.com/pittsburgh

The information contained herein has been given to us by the owner of the property or other sources we deem reliable. We have no reason to doubt its accuracy, but we do not guarantee it. All information should be verified prior to purchase or lease.

