

REAL  
ESTATE  
DEVELOPMENT  
PARTNERS

FOR LEASE

711 Central Ave, Charlotte, NC



**CONTACT**  
RED Partners

Judd McAdams  
judd@redpart.com

Office: 704.374-9998  
Fax: 704.333.7993

[www.redpart.com](http://www.redpart.com)

*Every effort has been made to ensure the accuracy of the information presented but no liability is assumed for errors or omissions. This offering is subject to prior sale, lease, change or withdrawal without prior notice and approval of owner.*

**DESCRIPTION:** Great location on Central Avenue! Close to 277, Uptown, and the heart of Plaza/Midwood. This space offers 5 private offices, a conference room, a kitchenette, and a bathroom.

**ADDRESS:** 711 Central Ave, Suite B  
Charlotte, NC 28204

**AVAILABLE SF:** 1,600 SF

**MONTHLY RATE:** \$2,750.00 (Full Service)

**CURRENT ZONING:** B-2



R + E + D

REAL ESTATE DEVELOPMENT PARTNERS

FOR LEASE



Uptown Charlotte

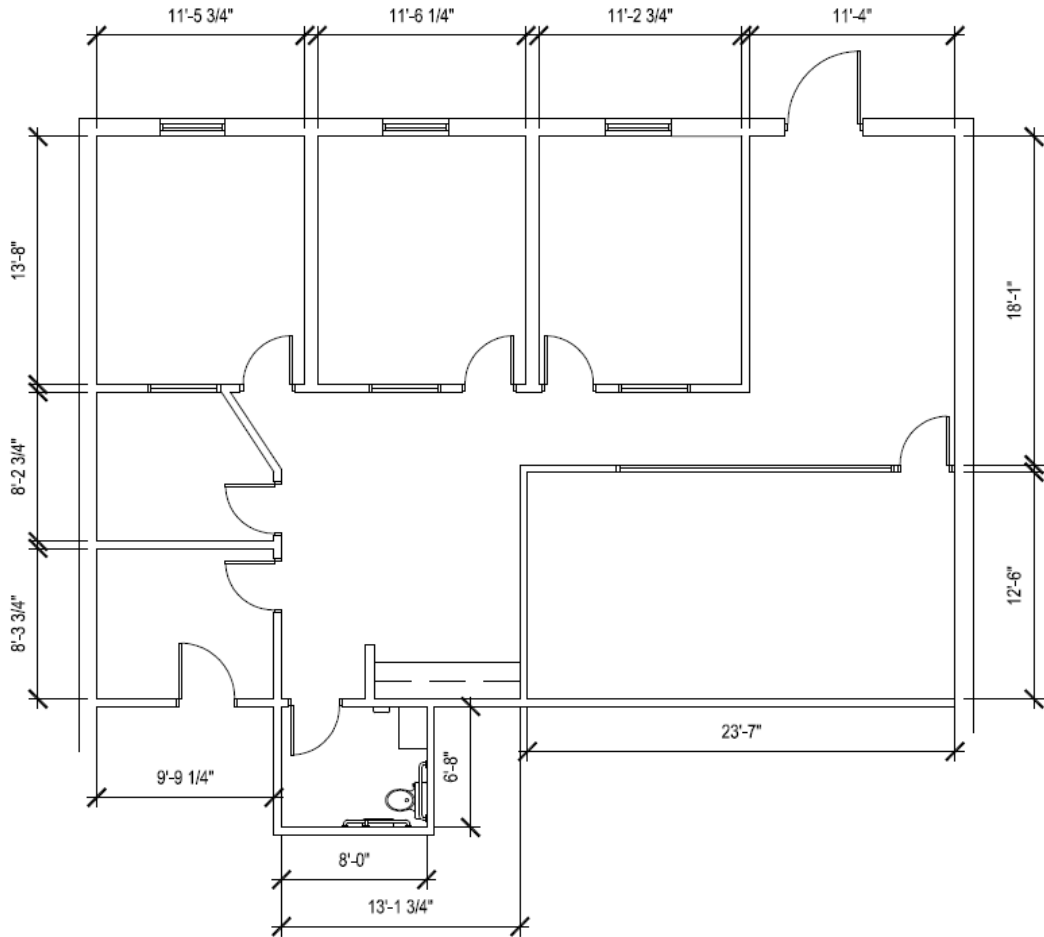
Central Avenue

Plaza/Midwood



REAL ESTATE DEVELOPMENT PARTNERS

# FLOORPLAN



SCALE: 1/8" = 1'-0"

**Every effort has been made to ensure the accuracy of the information presented but no liability is assumed for errors or omissions. This offering is subject to prior sale, lease, change or withdrawal without prior notice and approval of owner.**