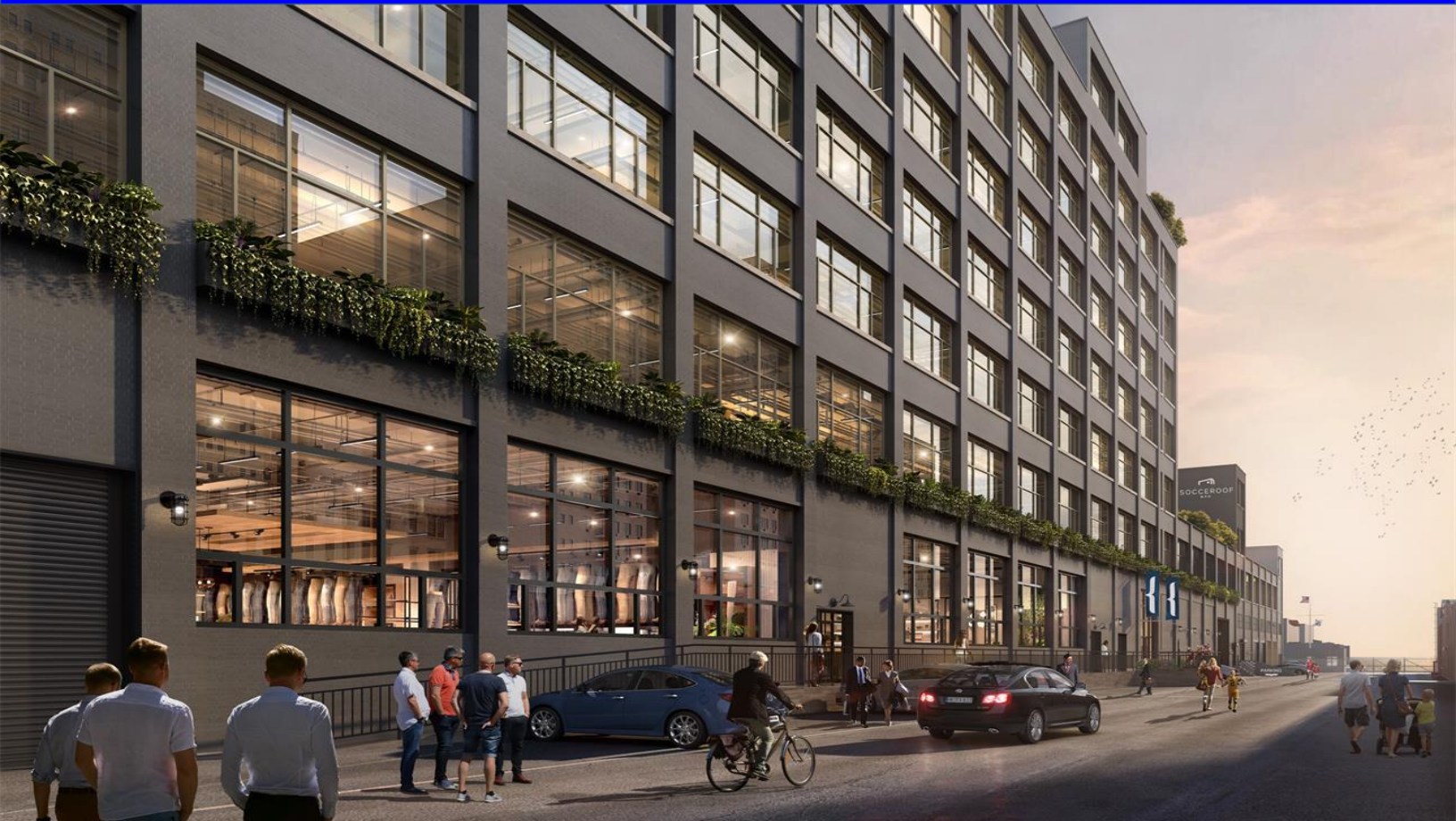


# WHALE

**14 53<sup>rd</sup> St**  
**{Sunset Park, Brooklyn}**  
**Suite 217S - 21,652 RSF**



## Space Highlights:

- ❖ Tremendous southern exposure
- ❖ 15' 9" ceilings
- ❖ Direct elevator presence
- ❖ Divisible (inquire for details)
- ❖ Outdoor space opportunity
- ❖ Sweeping water views

## Property Highlights:

- ❖ 500,000 RSF State-of-the-Art Redevelopment
- ❖ Renovated lobby
- ❖ New passenger elevators
- ❖ New windows
- ❖ Access to Shuttle Service, **R** Train & 58th Street Ferry Stop



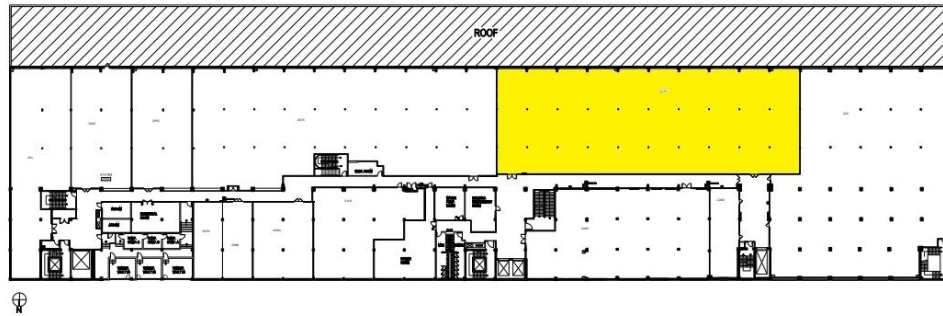
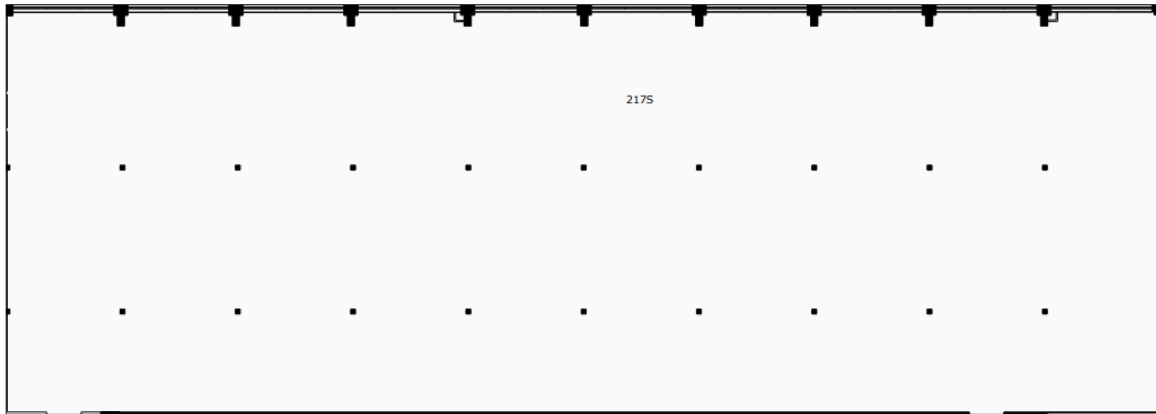
**CUSHMAN & WAKEFIELD**

A full commission computed and earned in accordance with the rates and conditions of our agency agreement with our principal, when received from our principal, will be paid to the cooperating broker who consummates a lease which is unconditionally executed and delivered by and between lessor and lessee (a copy of the rates and conditions referred to above is available upon request).



**Suite 217S**  
**21,652 RSF**

**WHALE**



**FOR INFORMATION PLEASE CONTACT:**

**Joseph Cirone**  
718 606 7038  
[joseph.cirone@cushwake.com](mailto:joseph.cirone@cushwake.com)

**Rico T. Murtha**  
718 307 6536  
[rico.murtha@cushwake.com](mailto:rico.murtha@cushwake.com)

**Rich Novak**  
212 713 6858  
[rich.novak@cushwake.com](mailto:rich.novak@cushwake.com)

**Alex Kouwenhoven**  
718 307 6503  
[alex.kouwenhoven@cushwake.com](mailto:alex.kouwenhoven@cushwake.com)

