

Premier Office Space Available

Colliers

465 Columbus Avenue

VALHALLA, NY

465 Columbus Avenue

VALHALLA, NY

Colliers

CLASS A OFFICE SPACE IN TENANT FRIENDLY BUILDING

LEASED	Suite 140	2,580 RSF
	Suite 205	4,500 RSF
	Suite 250	2,331 RSF
	Suite 280	3,055 RSF
	Suite 250 + 280	5,386 RSF
LEASED	Suite 340	4,993 RSF
	Suite 390	1,996 RSF



Craig S. Ruoff

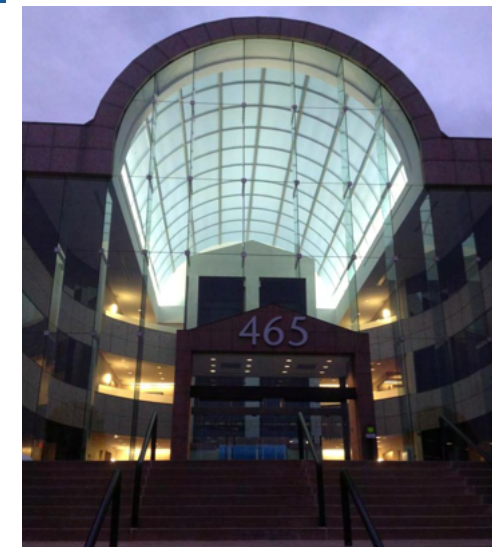
Executive Managing Director
Associate Real Estate Broker
CELL +1 914 441 7688
craig.ruoff@colliers.com

Jeremy Lindh

Associate
Real Estate Salesperson
CELL +1 914 498 9031
jeremy.lindh@colliers.com

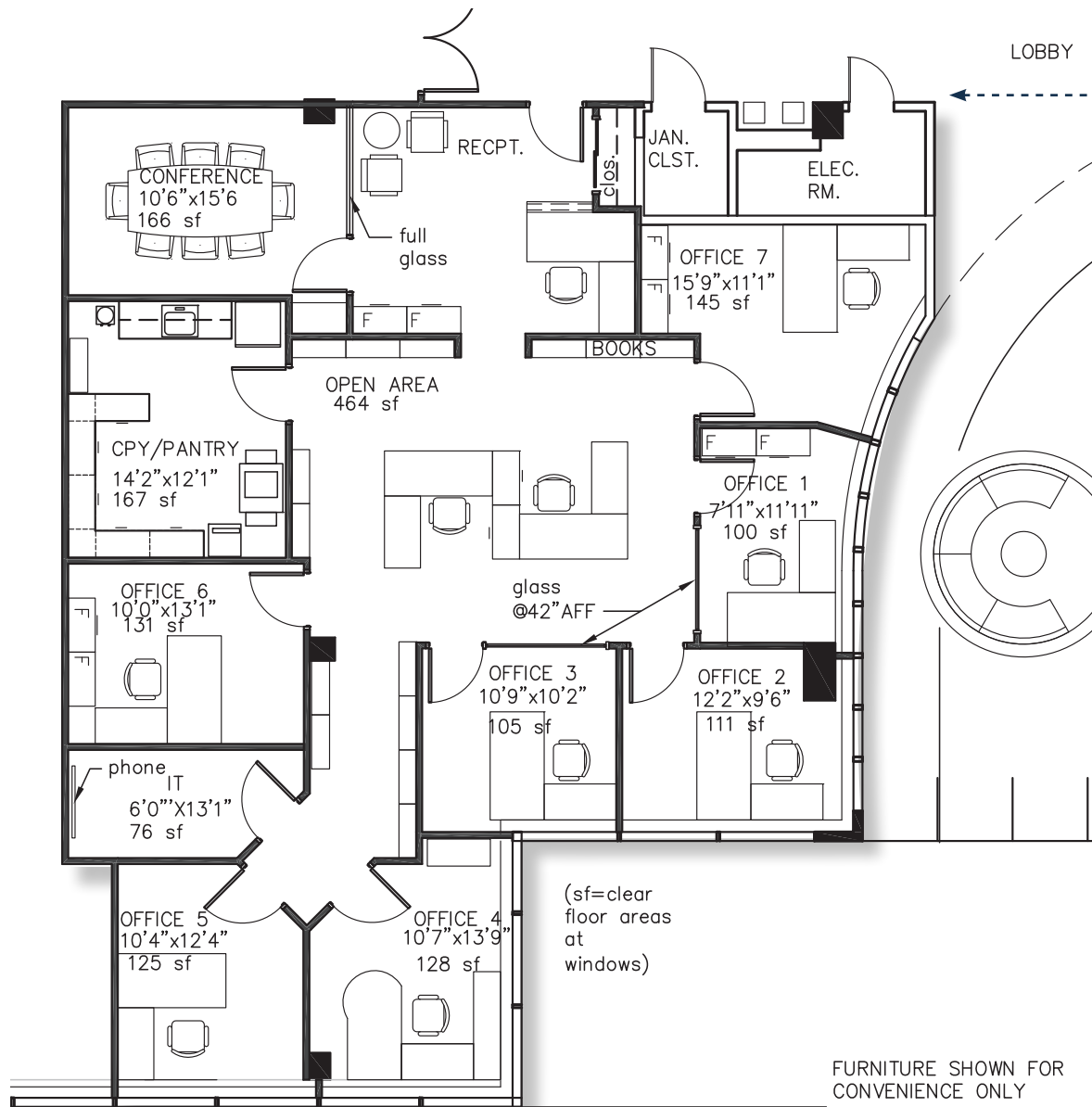
Space Features

- Key location and facilities to support businesses looking to relocate or open a new office
- Magnificent atrium, on-site cafe & conference facility | **Conference Room:** [CLICK HERE FOR VIRTUAL TOUR](#)
- Spaces can be leased as is or customized
- Covered and surface parking
- Bee line bus to Metro North Train Station
- 15 minutes to Downtown White Plains and the White Plains Train Station. 10 minutes to Chappaqua and Armonk
- Excellent access to Bronx River, Sprain Brook, Saw Mill and Taconic State Parkways, I-287 and Route 22
- FIOS, Cablevision, Lightpath, onsite storage, regular cleaning of common areas and tenant spaces
- On-site management
- Close to banks, restaurants and shopping



465 Columbus Avenue

VALHALLA, NY



LOBBY

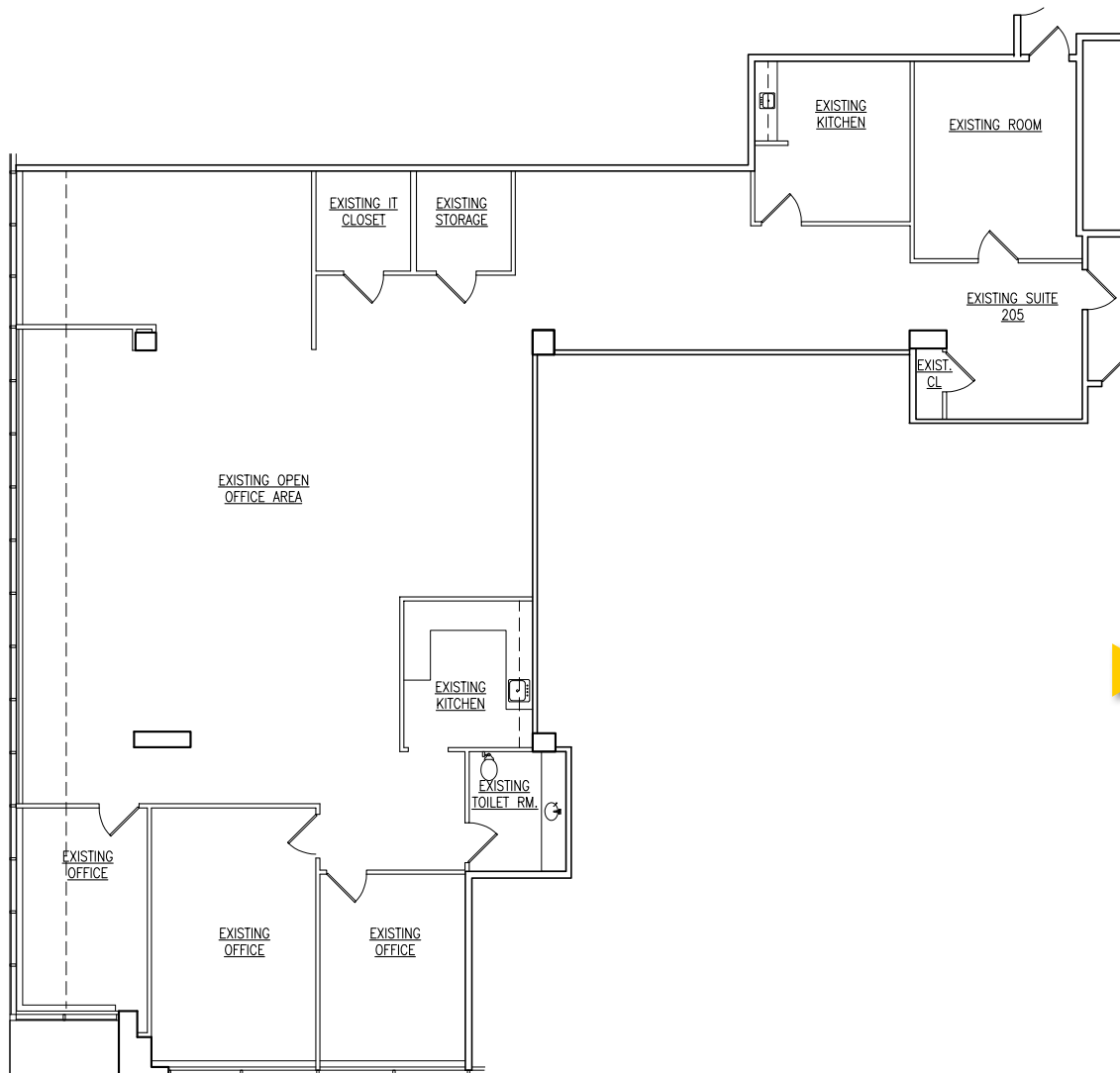
Suite 140	2,580 RSF	LEASED
Suite 205	4,500 RSF	
Suite 250	2,331 RSF	
Suite 280	3,055 RSF	
Suite 250 + 280	5,386 RSF	
Suite 340	4,993 RSF	LEASED
Suite 390	1,996 RSF	

[CLICK HERE FOR VIRTUAL TOUR](#)

FURNITURE SHOWN FOR CONVENIENCE ONLY

465 Columbus Avenue

VALHALLA, NY

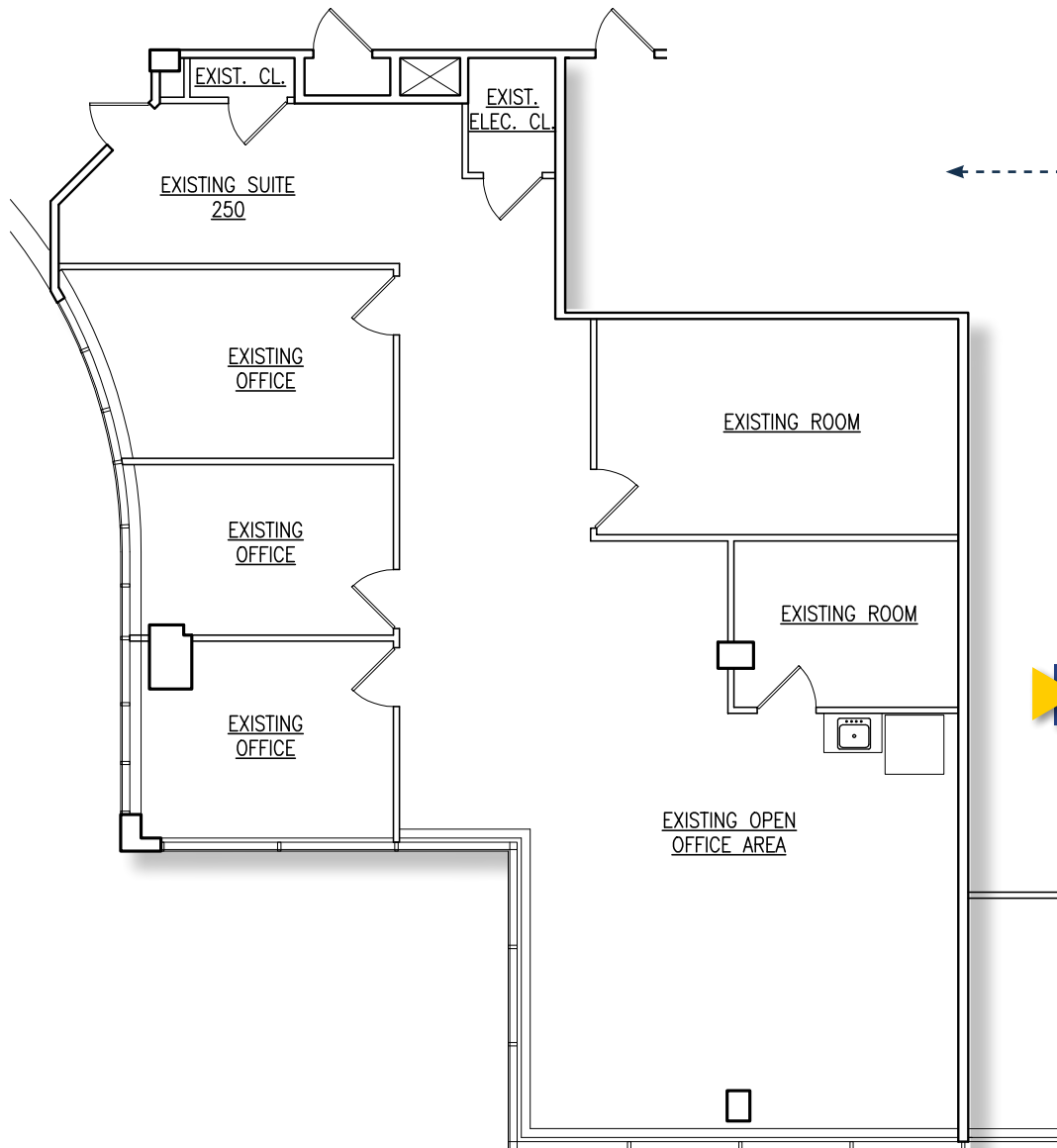


Suite 140	2,580 RSF	LEASED
Suite 205	4,500 RSF	
Suite 250	2,331 RSF	
Suite 280	3,055 RSF	
Suite 250 + 280	5,386 RSF	
Suite 340	4,993 RSF	LEASED
Suite 390	1,996 RSF	

[CLICK HERE FOR VIRTUAL TOUR](#)

465 Columbus Avenue

VALHALLA, NY

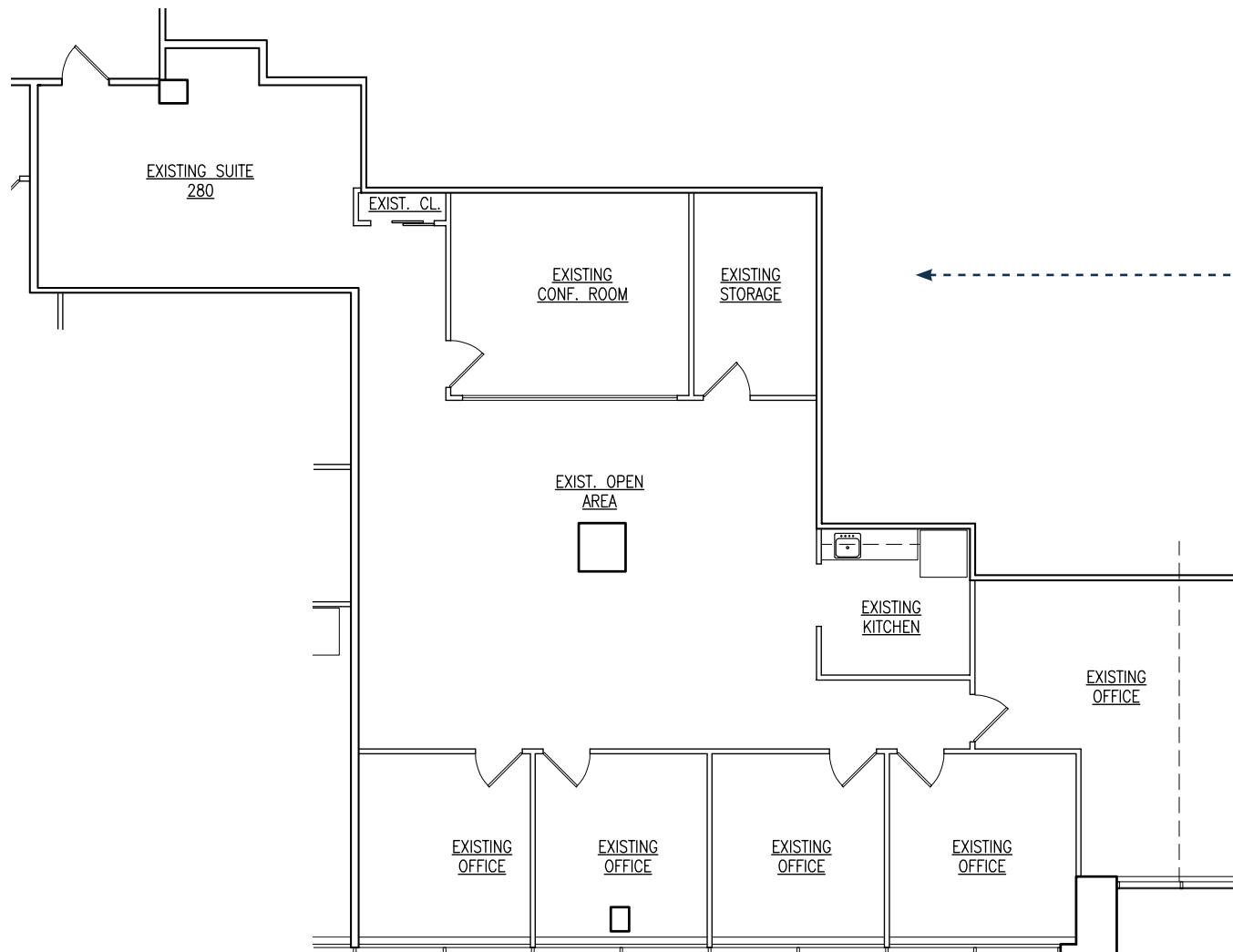


Suite 140	2,580 RSF	LEASED
Suite 205	4,500 RSF	
Suite 250	2,331 RSF	
Suite 280	3,055 RSF	
Suite 250 + 280	5,386 RSF	
Suite 340	4,993 RSF	LEASED
Suite 390	1,996 RSF	

[CLICK HERE FOR VIRTUAL TOUR](#)

465 Columbus Avenue

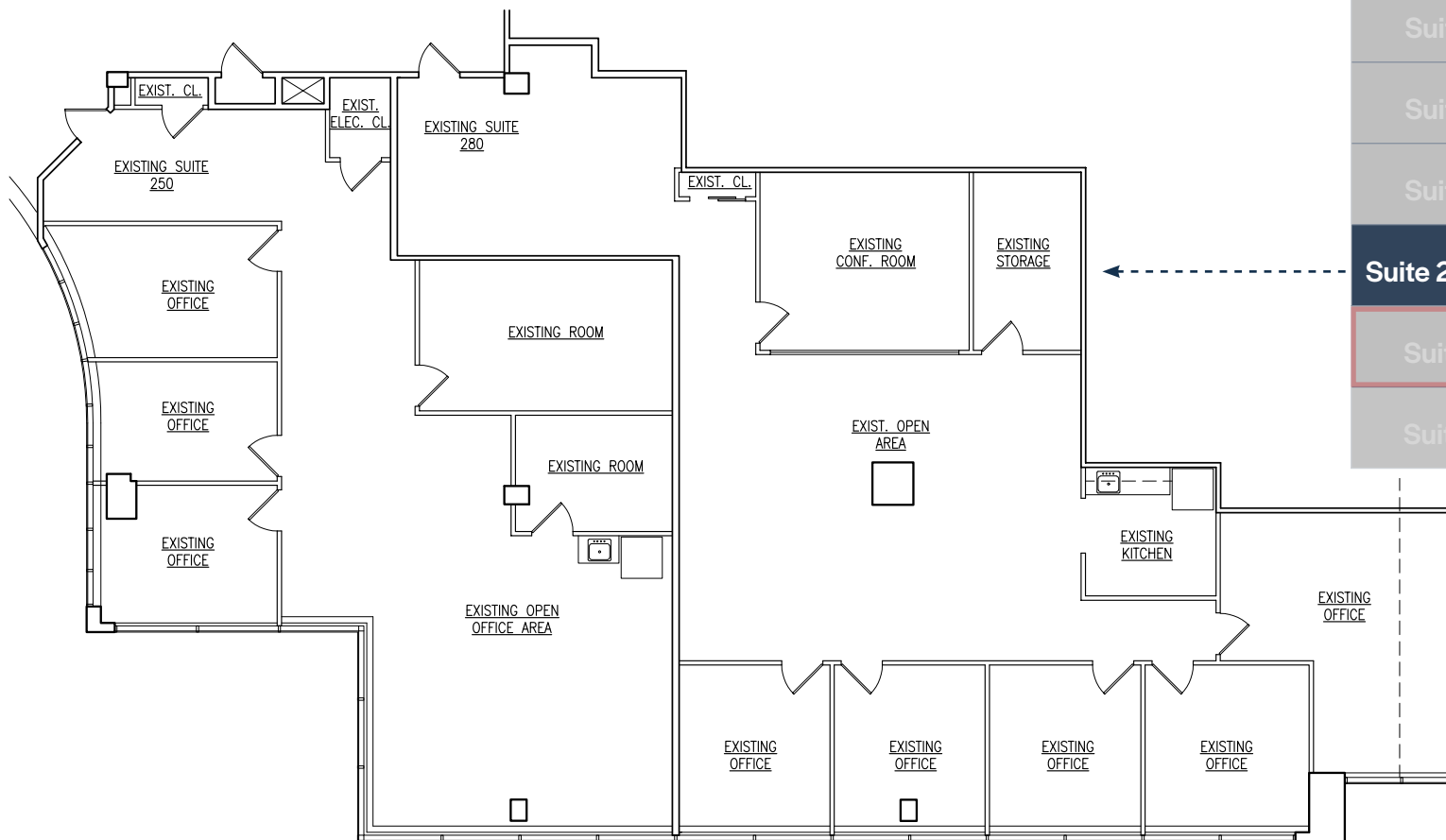
VALHALLA, NY



Suite 140	2,580 RSF	LEASED
Suite 205	4,500 RSF	
Suite 250	2,331 RSF	
Suite 280	3,055 RSF	
Suite 250 + 280	5,386 RSF	
Suite 340	4,993 RSF	LEASED
Suite 390	1,996 RSF	

465 Columbus Avenue

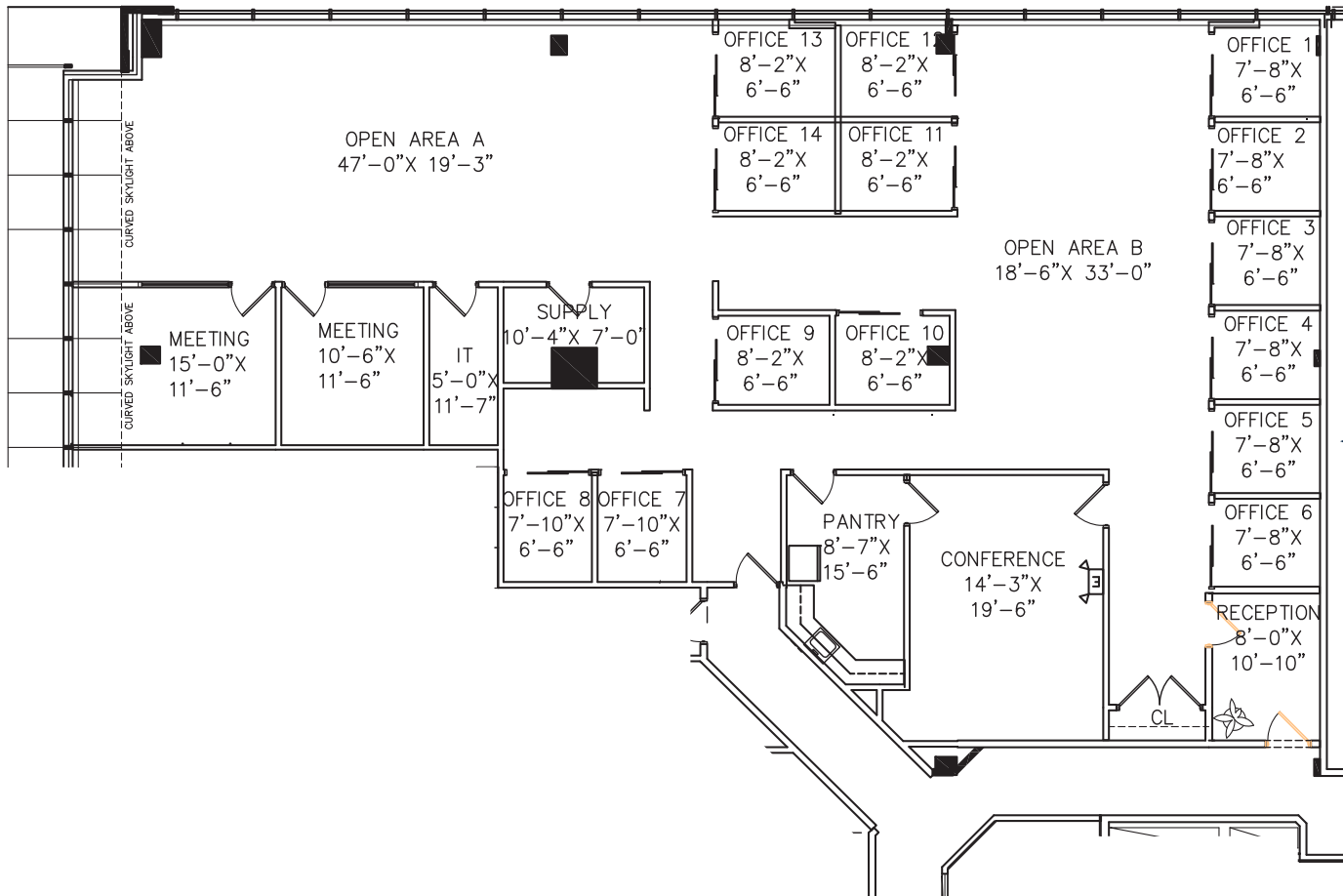
VALHALLA, NY



Suite 140	2,580 RSF	LEASED
Suite 205	4,500 RSF	
Suite 250	2,331 RSF	
Suite 280	3,055 RSF	
Suite 250 + 280	5,386 RSF	
Suite 340	4,993 RSF	LEASED
Suite 390	1,996 RSF	

465 Columbus Avenue

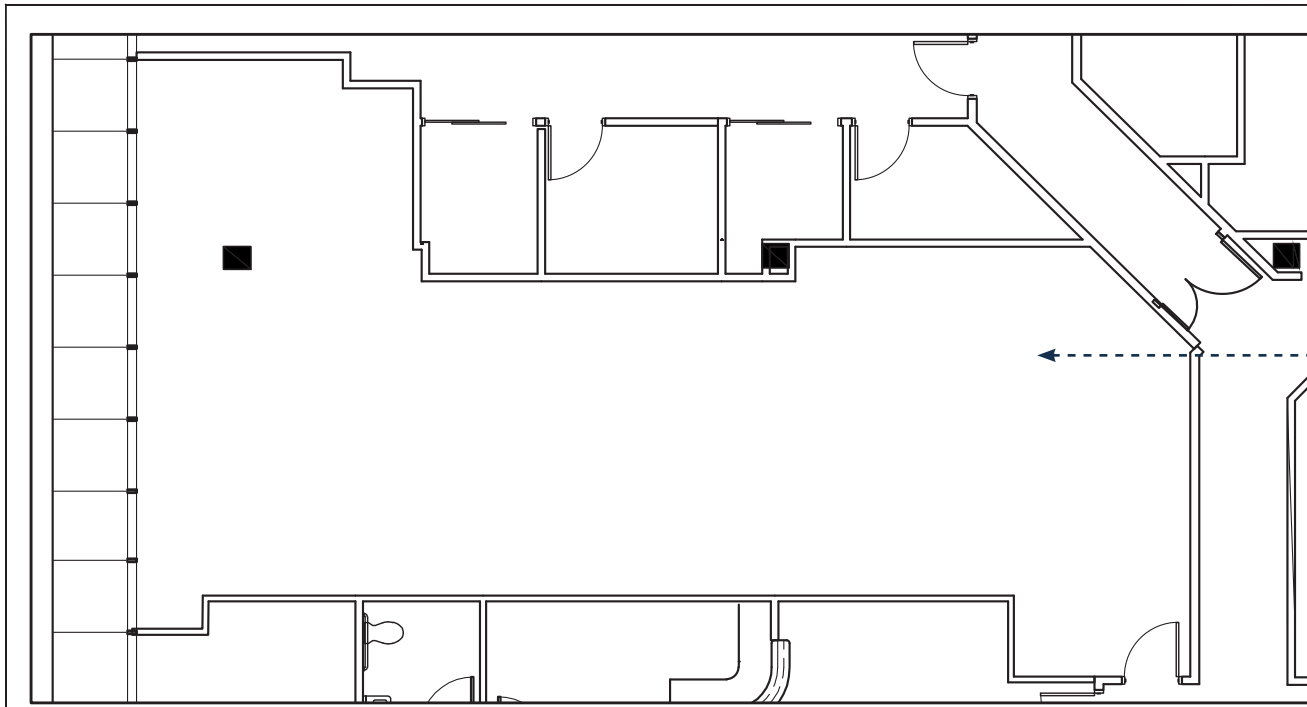
VALHALLA, NY



Suite 140	2,580 RSF	LEASED
Suite 205	4,500 RSF	
Suite 250	2,331 RSF	
Suite 280	3,055 RSF	
Suite 250 + 280	5,386 RSF	
Suite 340	4,993 RSF	LEASED
Suite 390	1,996 RSF	

465 Columbus Avenue

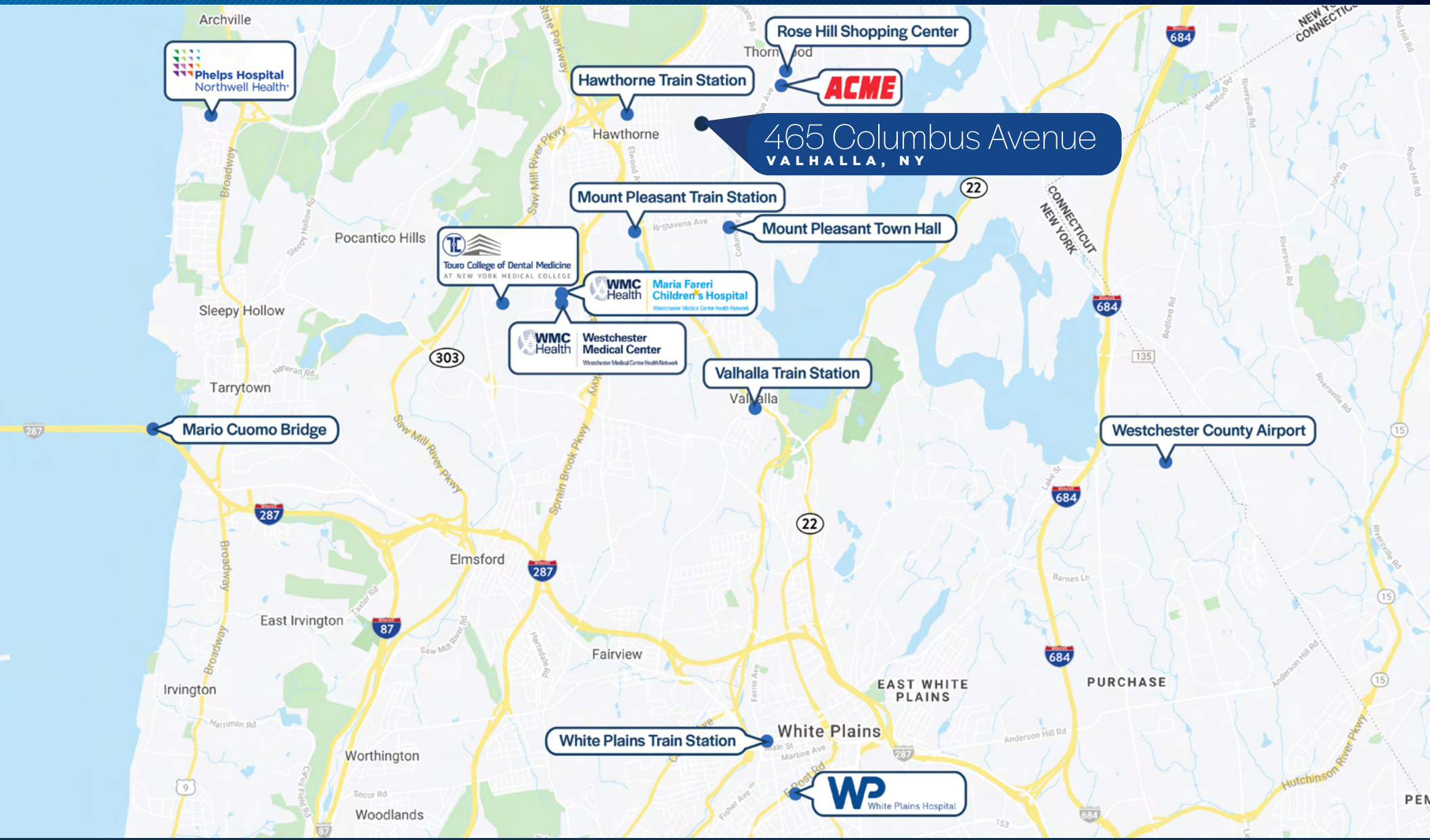
VALHALLA, NY



Suite 140	2,580 RSF	LEASED
Suite 205	4,500 RSF	
Suite 250	2,331 RSF	
Suite 280	3,055 RSF	
Suite 250 + 280	5,386 RSF	
Suite 340	4,993 RSF	LEASED
Suite 390	1,996 RSF	

465 Columbus Avenue

VALHALLA, NY



465 Columbus Avenue

VALHALLA, NY

Premier Office Space Available



Craig S. Ruoff

Executive Managing Director
Associate Real Estate Broker
CELL +1 914 441 7688
craig.ruoff@colliers.com

Jeremy Lindh

Associate
Real Estate Salesperson
CELL +1 914 498 9031
jeremy.lindh@colliers.com



No representation is made as to the accuracy of the information furnished herein and same is submitted subject to errors, omissions, change of prices, rental, or other conditions, prior sale, lease, sublease, and/or withdrawal without notice. While every attempt is made to ensure accuracy, the floor plan(s) is for guidance only. The measurements, dimensions, specifications, and other data shown are approximate and may not be to scale. We assume no responsibility for the accuracy of the floor plan(s) or for any action taken in reliance thereon. The floor plan(s) do not create any representation, warranty or contract. All parties should consult a professional, such as an architect, to verify the information contained herein. The furnishing of this information shall not be deemed a hiring. A commission in accordance with our principal's schedule of rates and conditions will be paid to the procuring Broker who executes our or our principal's brokerage agreement, subject to a fully consummated transaction upon terms and conditions acceptable to our principal. Colliers International NY, LLC