

Commercial Leasing Office
5836 Fayetteville Rd, Suite 201
Durham, NC 27713
Ph: 919-484-1053
Fax: 919-484-1996
www.ticonproperties.com
brent@ticonproperties.com



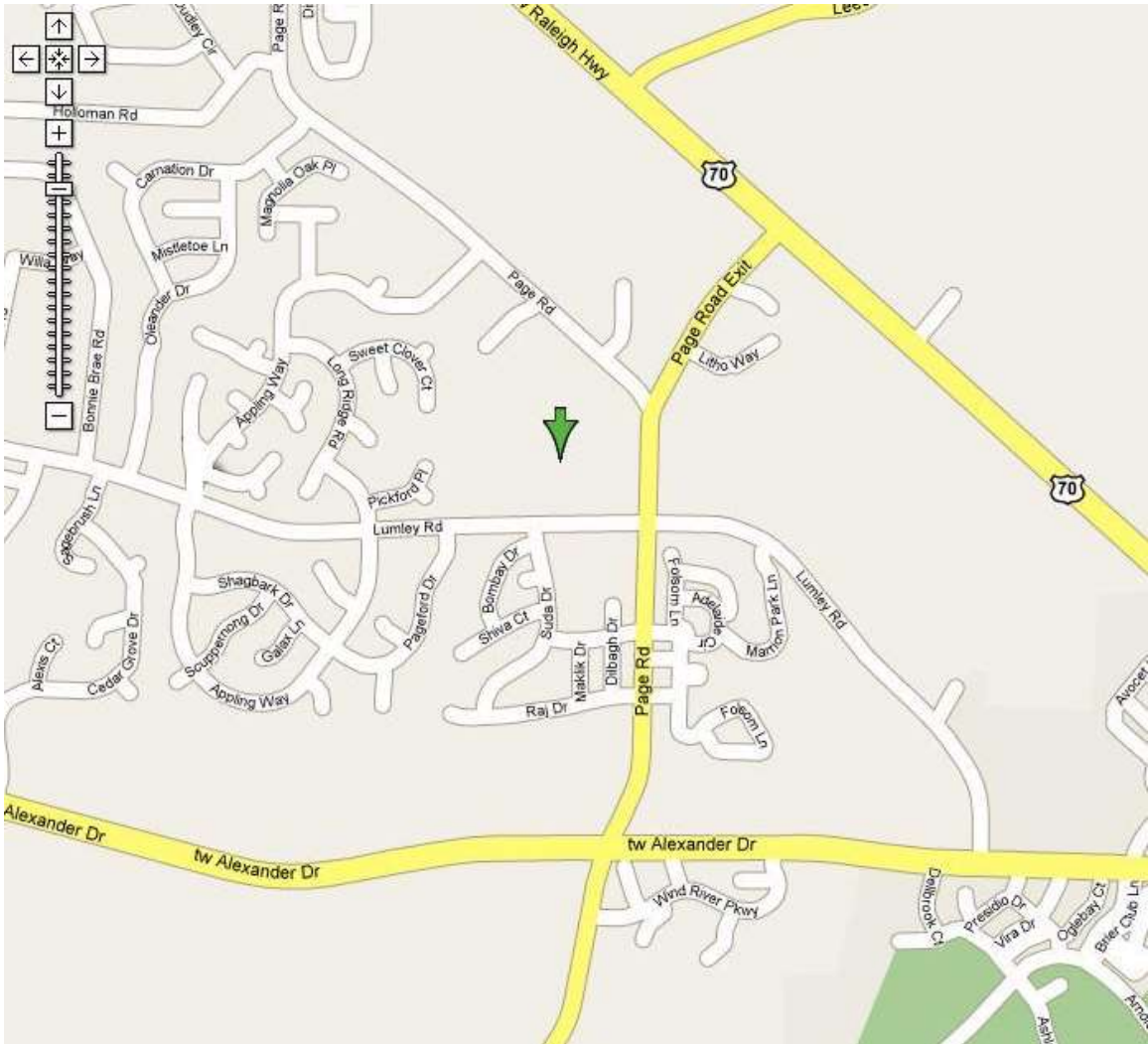
Brassfield Business Center Commercial Space Available for Lease

- **First and Second floor commercial office space**
- **\$13.50 - \$16.50 Per Square Foot**
- **No TICAM charges**
- **Tenant responsible for utilities and janitorial**
- **3 -5 year lease term**
- **Close to Brier Creek, RTP & RDU Airport**
- **3% annual rent increases**
- **Personal guarantor with approved credit required**

INFORMATION HEREIN IS SUBJECT TO VERIFICATION BY ALL PARTIES AND MAY CHANGE WITHOUT NOTICE. PLANS NOT TO SCALE; FOR GENERAL APPROXIMATION ONLY; SUBJECT TO CHANGE, REVISION, OMISSION AT ANY TIME.

Location
2140, 2144, 2206 and 2232 Page Rd.
Durham, NC 27703

5409, 5441 and 5475 Lumley Rd
Durham, NC 27703



INFORMATION HEREIN IS SUBJECT TO VERIFICATION BY ALL PARTIES AND MAY CHANGE WITHOUT NOTICE. PLANS NOT TO SCALE; FOR GENERAL APPROXIMATION ONLY; SUBJECT TO CHANGE, REVISION, OMISSION AT ANY TIME.

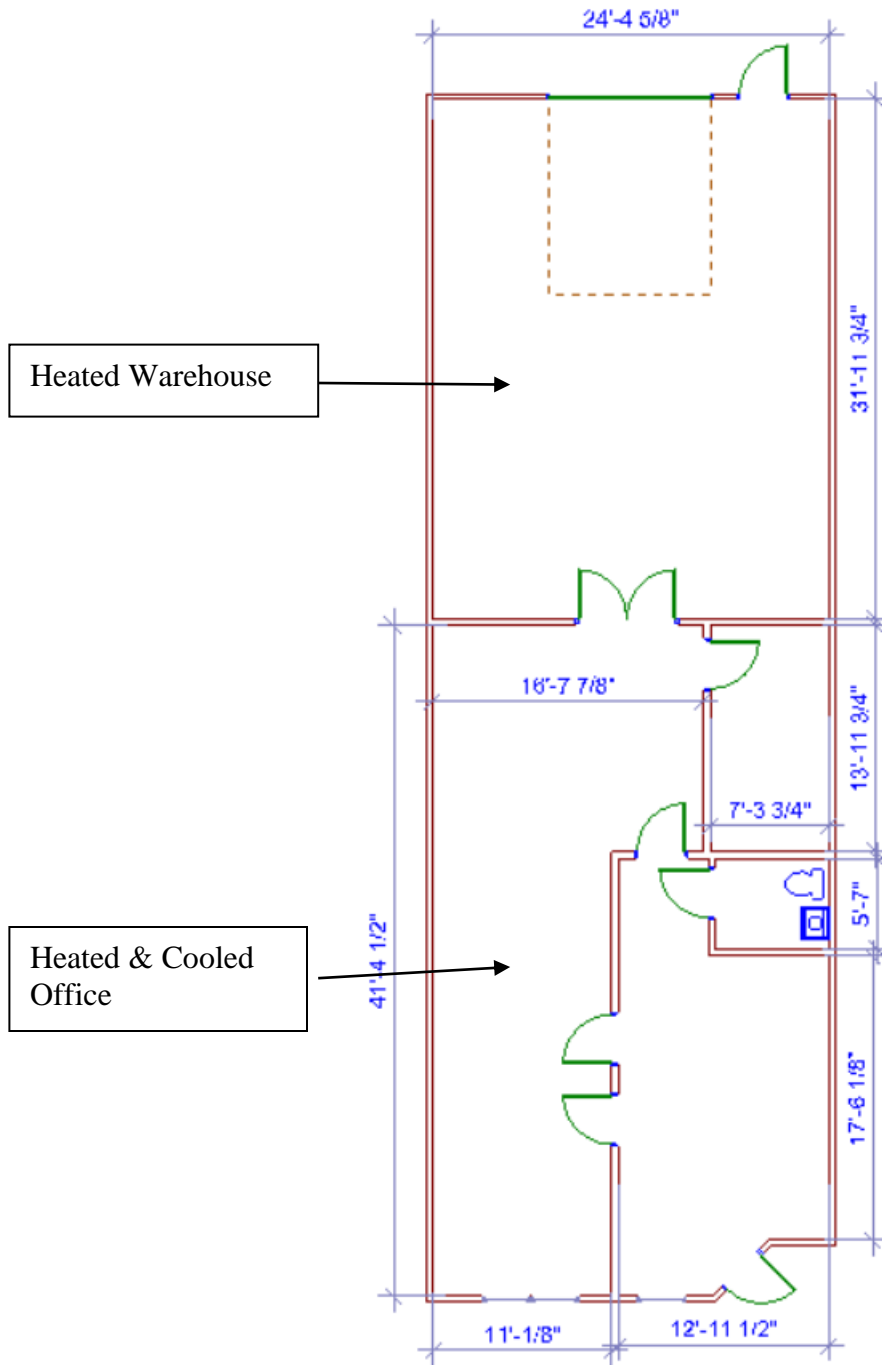
Brassfield Site Plan

Vacant Space Highlighted



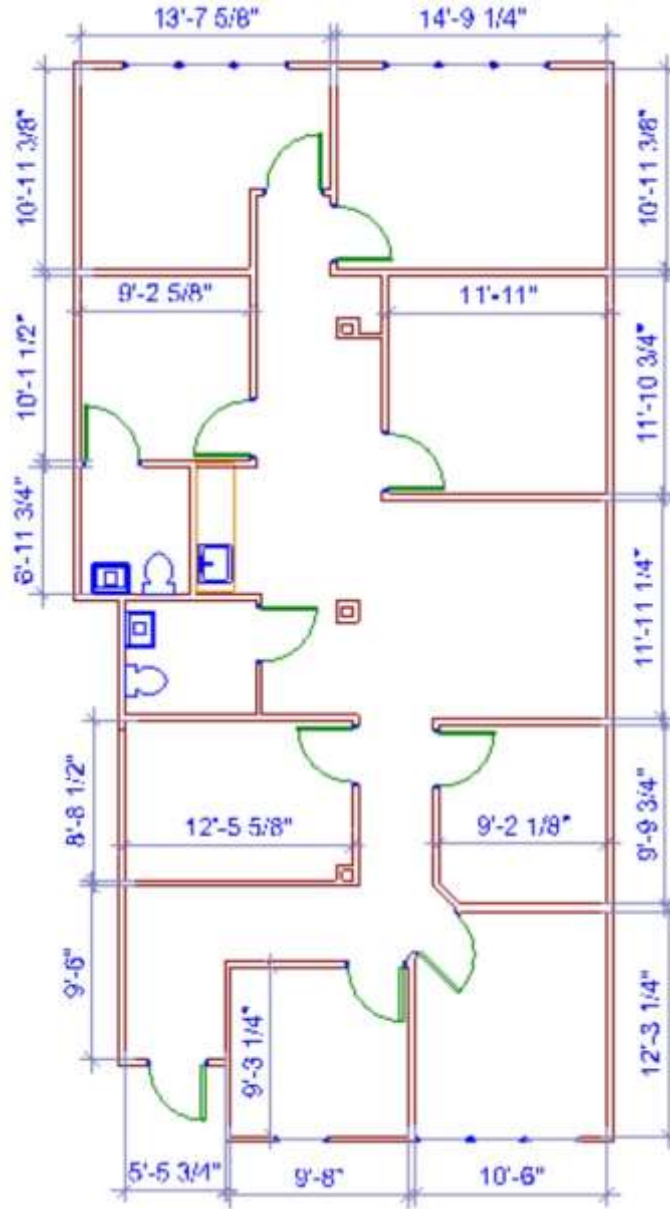
INFORMATION HEREIN IS SUBJECT TO VERIFICATION BY ALL PARTIES AND MAY CHANGE WITHOUT NOTICE. PLANS NOT TO SCALE; FOR GENERAL APPROXIMATION ONLY; SUBJECT TO CHANGE, REVISION, OMISSION AT ANY TIME.

Building 2210 Suite 103
Approx 1,875 SF
\$13.50 PSF or \$2,109.38 / month
First Floor office and warehouse with grade level roll up door



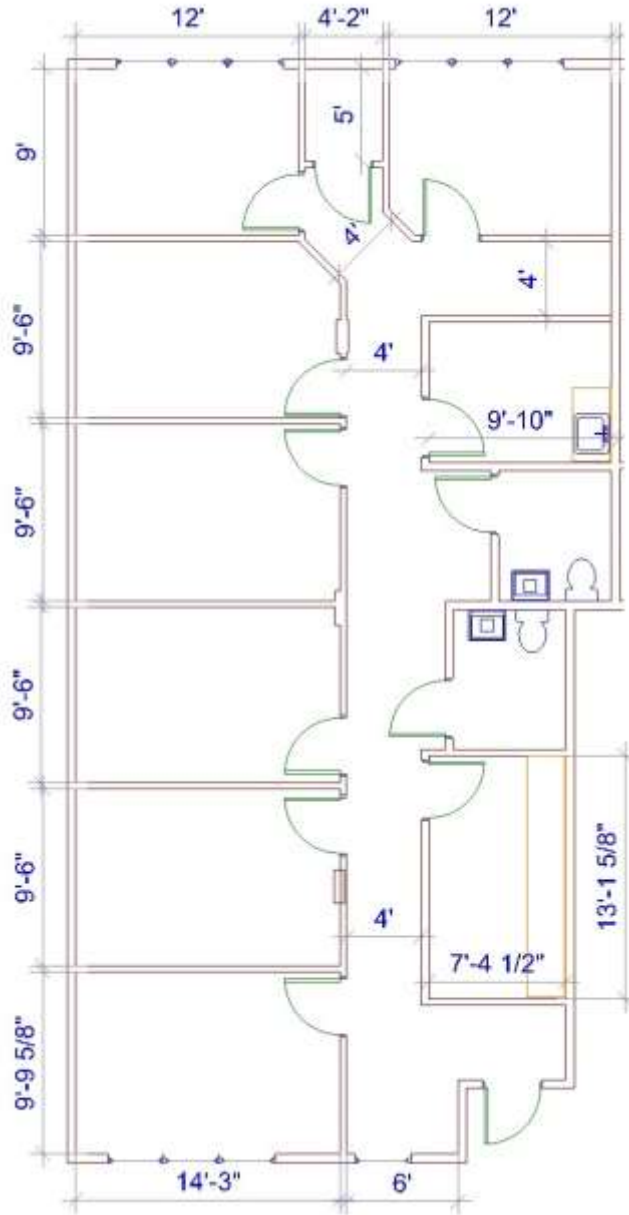
INFORMATION HEREIN IS SUBJECT TO VERIFICATION BY ALL PARTIES AND MAY CHANGE WITHOUT NOTICE. PLANS NOT TO SCALE; FOR GENERAL APPROXIMATION ONLY; SUBJECT TO CHANGE, REVISION, OMISSION AT ANY TIME.

Building 2144 Suite 103
Approx 1,710 SF
\$16.50 PSF or \$2,351.25 / month



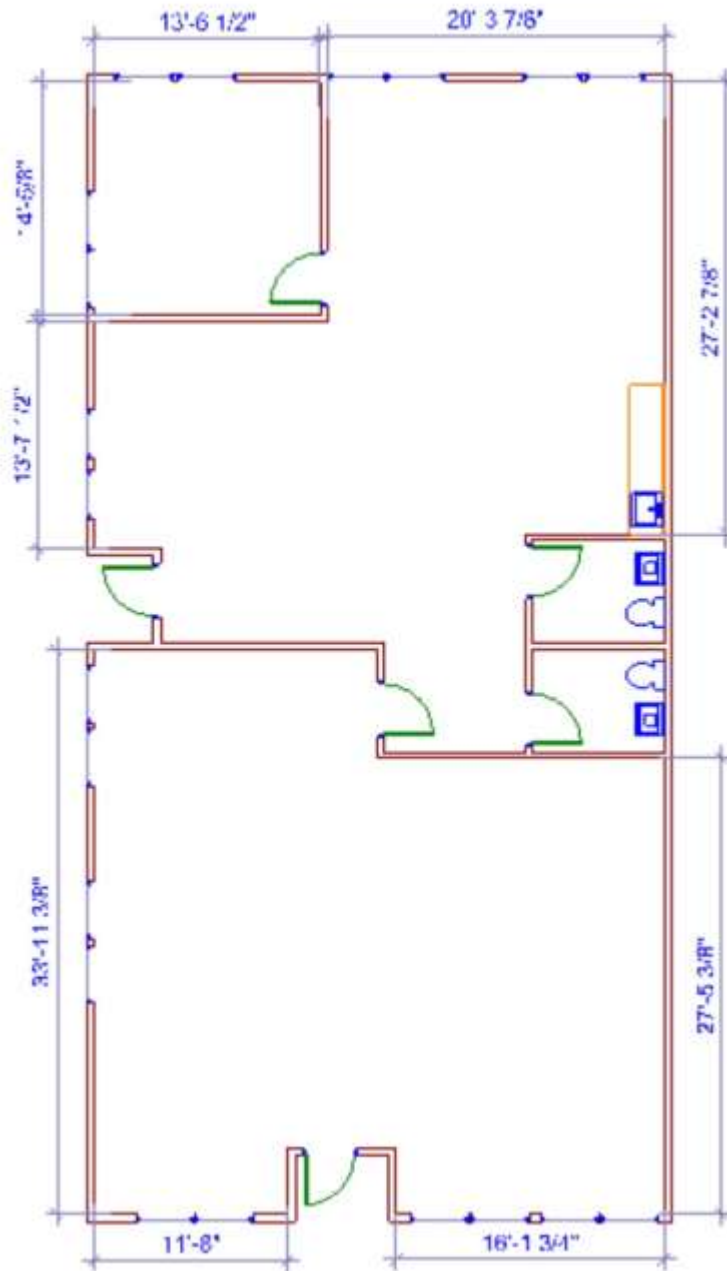
INFORMATION HEREIN IS SUBJECT TO VERIFICATION BY ALL PARTIES AND MAY CHANGE WITHOUT NOTICE. PLANS NOT TO SCALE; FOR GENERAL APPROXIMATION ONLY; SUBJECT TO CHANGE, REVISION, OMISSION AT ANY TIME.

Building 2232 Suite 103
Approx 1,725 SF
\$16.50 PSF or \$2,371.88 / month
Available October 2020



INFORMATION HEREIN IS SUBJECT TO VERIFICATION BY ALL PARTIES AND MAY CHANGE WITHOUT NOTICE. PLANS NOT TO SCALE; FOR GENERAL APPROXIMATION ONLY; SUBJECT TO CHANGE, REVISION, OMISSION AT ANY TIME.

Building 2140 Suite 101/106
Approx 2,520 SF
\$16.50 PSF or \$3,465.00 / month
Available October 2020
Space may be divided to 1,260 SF at \$1,732.50



INFORMATION HEREIN IS SUBJECT TO VERIFICATION BY ALL PARTIES AND MAY CHANGE WITHOUT NOTICE. PLANS NOT TO SCALE; FOR GENERAL APPROXIMATION ONLY; SUBJECT TO CHANGE, REVISION, OMISSION AT ANY TIME.