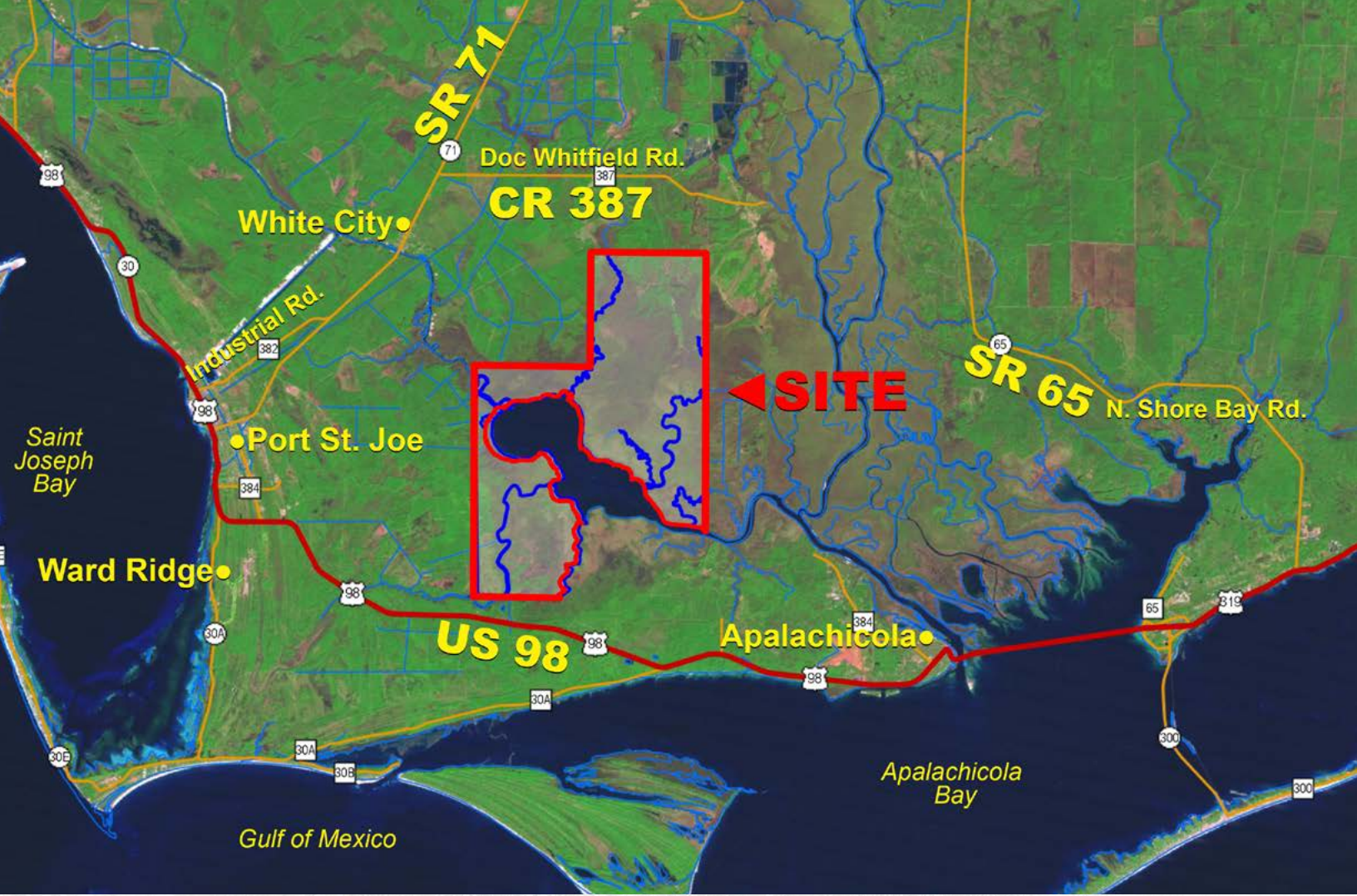


# LAKE WIMICO RECREATION & CONSERVATION

Port St. Joe, Florida • Gulf County

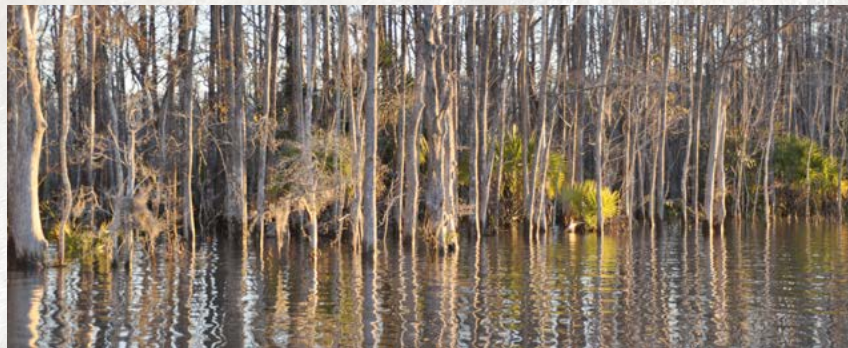
20,146 +/- ACRES





*Lake Wimico is a wild area of Florida that is bordered by forested wetlands and backwaters.*

*The lake is accessible by boat via the Apalachicola River, Depot Creek, or the Intercoastal Waterways.*



*Lake Wimico is a popular bass fishing destination and hosts several bass tournaments each year.*

For an aerial video and additional maps go to:  
***SREland.com/Wimico***





# LAKE WIMICO RECREATION & CONSERVATION

Port St. Joe, Florida • Gulf County

Lake Wimico is located near Port St. Joe in Gulf County, Florida, and connects through nearby White City. The property surrounds approximately 86% of the lake, where wildlife abound in the forested wetlands throughout the tract.

Abundant habitat created by pine, hardwood, and Cypress timber harbor Ospreys, Ibis, Heron, raccoons, deer, rabbits, turtles, snakes, alligators, manatee, and any other Florida wildlife that you can possibly imagine.

Lake Wimico is 4,055 +/- acres and one of Florida's popular freshwater fishing areas. In the surrounding area, there are a variety of activities you can explore, including hiking, fishing, boating, camping and nature viewing.

**Acreage:** 20,146 +/- acres

**Sale Price:** \$10,625,000

**Price per Acre:** \$527.40

**County:** Gulf

**Address:**

- Wewahitchka, FL 32456 - north side of property
- Port St. Joe, FL 32456 - west side of property

**Lake/Water Features:**

- Surrounds 86% of Lake Wimico
- The lake is accessible by boat via the Apalachicola River, Depot Creek, or Intercoastal Waterways
- Includes meandering creeks and rivers
- Waterway access to Apalachicola Bay to Gulf of Mexico

**Access to Property:**

- County roads access the property at various locations
- South access - off US 98 to Brown S. Neck Loop Road
- North access - off SR 387 (Doc. Whitfield Road) to Kenny Tram Road to Bear Island Road

**Land Cover:** Streams, forested wetlands, treeless hydric savanna, freshwater marshes, wet Prairies, and planted pine

**Soil Types:** Predominately Brickyard, Chowan, and Kenner Soils, frequently flooded; Maurepas Muck, frequently flooded - see soils map

**Uplands/Wetlands:** Mostly wetlands

- Uplands 1,855.8 +/- acres
- Wetlands 18,288.5 +/- acres

**Conservation Potential:** Conservation easement, mitigation bank, environmentally sensitive land acquisition

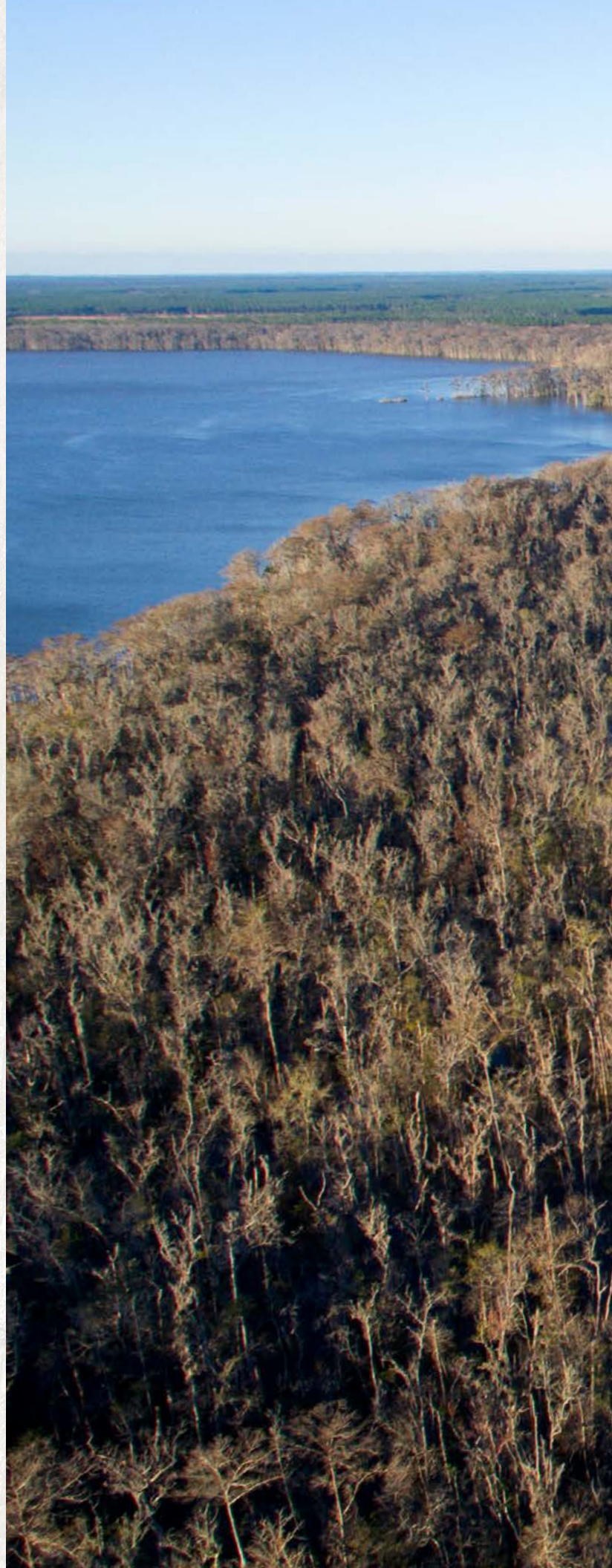
**Recreation:** Freshwater fishing, hiking, boating, camping, nature viewing

***Waterway Access to the Gulf of Mexico!***

***Located near Port St. Joe***

***Property Surrounds 86%  
of 4,055 AC Lake Wimico***

***Bass, Bluegill, Shellcracker Fishing!***









**Saunders**

REAL ESTATE

**863.648.1528**

114 North Tennessee Ave.  
3rd Floor  
Lakeland, FL 33801

**20,146 +/- Acres • Waterway Access to the Gulf of Mexico!**  
*Located Near Port St. Joe • Surrounds 86% of 4,055 AC Lake Wimico  
Freshwater Fishing, Hiking, Boating, Camping, Nature Viewing*

**LAKE WIMICO RECREATION & CONSERVATION**  
Port St. Joe, Florida • Gulf County

**20,146 +/- ACRES**

**Dean Saunders, ALC, CCIM**  
Dean@SREland.com • 863.774.3522

**Jack Vogel**  
JVogel@SREland.com • 352.364.0070

**Coldwell Banker Commercial Saunders Real Estate**

114 North Tennessee Ave., 3rd Floor    425 NE Santa Fe Blvd. (US 441)  
Lakeland, FL 33801    High Springs, FL 32643  
863.648.1528 - Main Office    **SREland.com**



For an aerial video and additional maps go to:  
***SREland.com/Wimico***