



COMMERCIAL

real property, real value.



For LEASE

543 N Main St

TERRIFIC OPPORTUNITY TO LEASE ON ANN ARBOR'S MAIN STREET. RECENTLY USED AS GENERAL OFFICE IN UPPER PORTION AND PERSONAL FITNESS TRAINING IN THE LOWER PORTION.

BUILT IN 1950

OFFICE/CREATIVE

O ZONING

3,300 SQFT

.107 AC

THE MAIN LEVEL (965 SF) OFFERS TWO ENTRANCES, RECEPTION, TWO OFFICES, AND ROOMY CONFERENCE ROOM WITH LARGE WINDOWS AND PLENTY OF LIGHT. LOWER LEVEL (2,335 SF) OFFERS MULTIPLE PRIVATE OFFICES WITH LARGE WINDOWS, AN OPEN COOPERATIVE SPACE WITH SKYLIGHTS, AND A KITCHENETTE.

FOUR PRIVATE PARKING SPACES ON THE WEST SIDE OF THE PROPERTY.

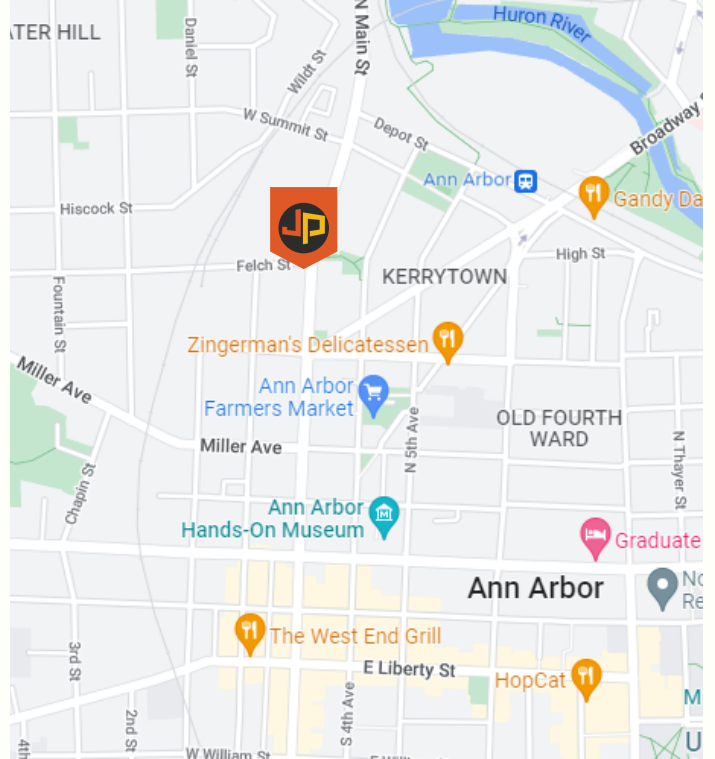


COMMERCIAL
real property, real value.

543 N Main St.

Ann Arbor, MI 48104

Office for Lease // Executive Summary



OFFERING SUMMARY

- LEASE RATE:** \$25 (MG)
- BUILDING SIZE:** 3,300 SF
- AVAILABLE SF:** 965-3,300 SF
- ZONING:** O - OFFICE
- PARKING:** 4 AVAILABLE

LOCATION OVERVIEW

This two-story, multiple tenant office building provides excellent visibility, quiet setting and is convenient to Westgate and Maple Shopping Centers, downtown Ann Arbor, US 94, and M14.

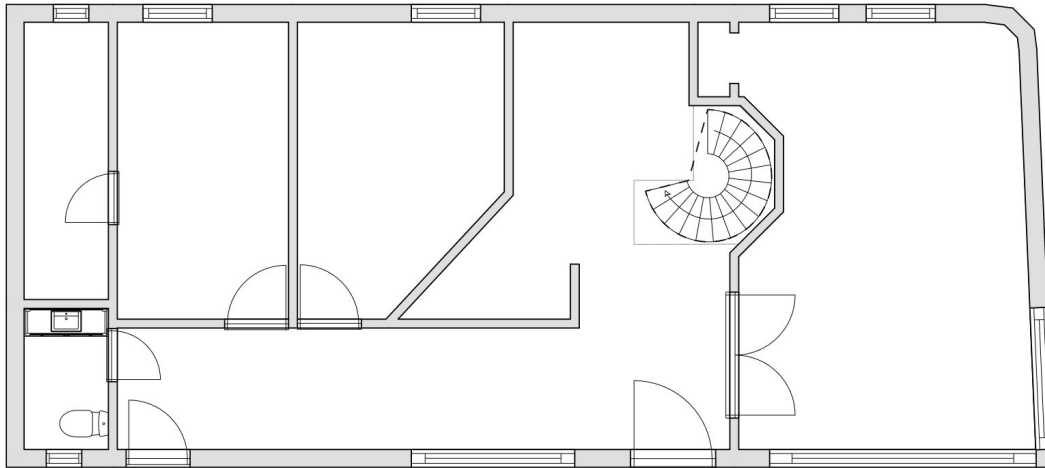
FOR LEASE

| SPACES | RATE | SIZE |
|------------|-----------|----------|
| 543 N MAIN | \$25 (MG) | 965 SF |
| 111 FELCH | \$25 (MG) | 2,335 SF |

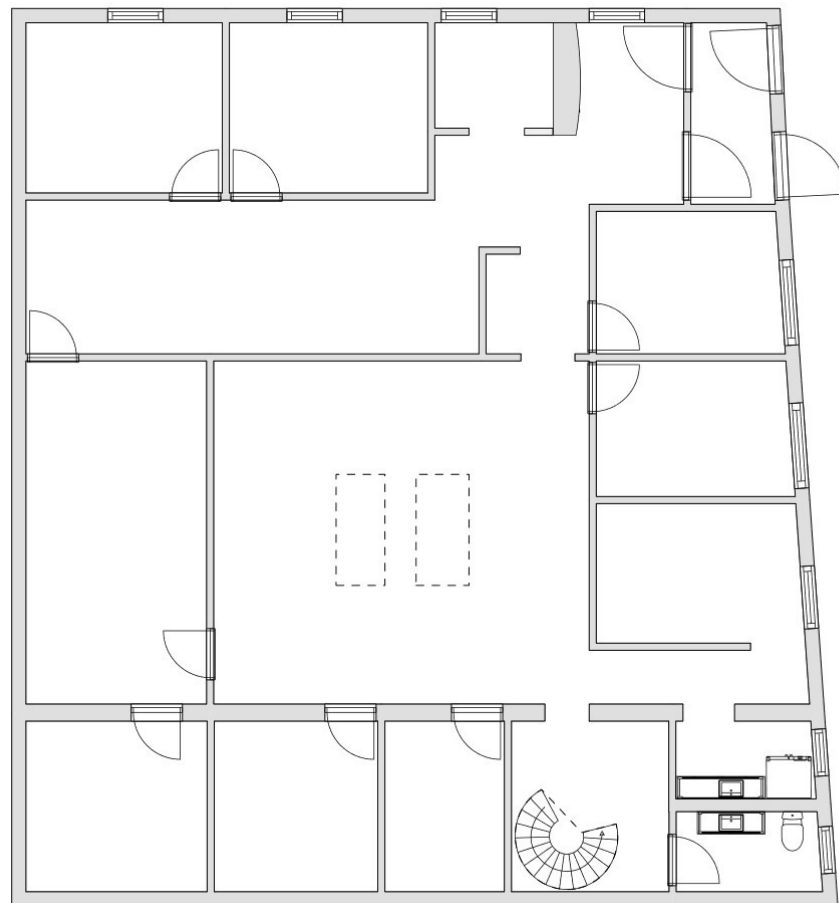
543 N Main St

Ann Arbor, MI 48104

Office for Lease // Floorplan



**MAIN
FLOOR**



**LOWER
LEVEL**



543 N Main St

Ann Arbor, MI 48104

Office for Lease // Photos



543 N Main St

Ann Arbor, MI 48104

Office for Lease // Brokerage



TYLER BURGOON

Broker / Operations Director

tyler@jpcommercialre.com
office 734 994 8800
cell 734 730 5633



JP COMMERCIAL REAL ESTATE (JPCRE) DOES NOT MAKE ANY REPRESENTATIONS OR WARRANTIES, EXPRESS OR IMPLIED, AS TO THE ACCURACY OR COMPLETENESS OF THE INFORMATION CONTAINED HEREIN, AND NOTHING CONTAINED HEREIN IS OR SHALL BE RELIED UPON AS A PROMISE OR REPRESENTATION AS TO THE FUTURE REPRESENTATION OF THE PROPERTY. THIS MAY INCLUDE CERTAIN STATEMENTS AND ESTIMATES WITH RESPECT TO THE PROPERTY. JPCRE DISCLAIMS ANY AND ALL LIABILITY FOR REPRESENTATIONS OR WARRANTIES, EXPRESSED OR IMPLIED, CONTAINED IN OR OMITTED INFORMATION. THE INFORMATION CONTAINED HEREIN IS SUBJECT TO CHANGE WITHOUT NOTICE AND THE RECIPIENT OF THESE MATERIALS SHALL NOT LOOK TO JPCRE OR THE JPCRE ADVISOR NOR ANY OF THEIR OFFICERS, EMPLOYEES, REPRESENTATIVES, INDEPENDENT CONTRACTORS OR AFFILIATES, FOR THE ACCURACY OR COMPLETENESS THEREOF.