

MOVE-IN READY

9,000 sf of Office & 13,000 sf of Warehouse for Sublet
Lease Rate: \$15 psf Gross

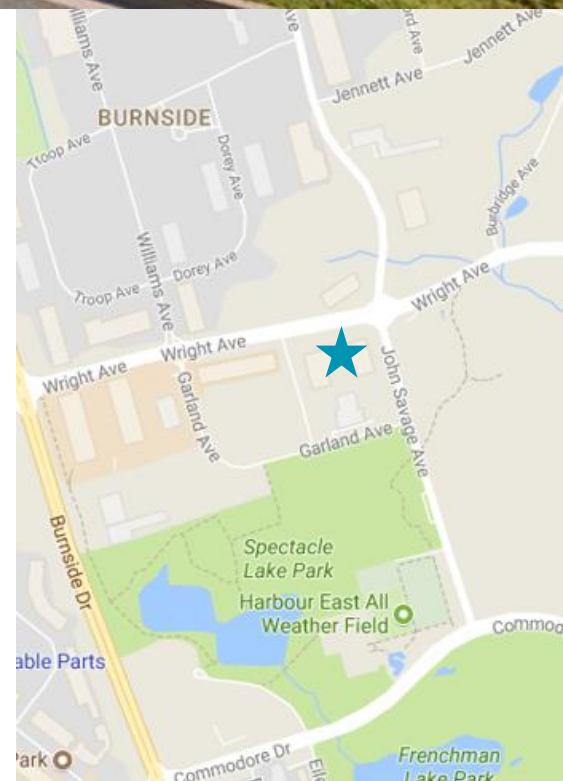
Attractive building in the City of Lakes Business Park, offers great exposure at the intersection of Wright Avenue and John Savage Avenue. Close to restaurants, shopping at Dartmouth Crossing, and proximity to Highway 118 and bridges.

Property Highlights

- Modern, ultra-bright office space with full-height windows and open ceilings
- Open work areas, private “break-out” spaces, kitchen and large boardroom
- 24’ ceilings in warehouse, with two dock doors
- Clean lab space with solder fume extraction system

Location

- Burnside Business Park is the largest business park in Atlantic Canada with over 1,500 hundred enterprises and over 15,000 employees.
- Burnside is located adjacent to five 100 series highways providing quick access to and from the park. Additionally, Burnside businesses are located within 10-15 minutes travel time to the downtown Halifax CBD, the Halifax International Airport, and the Port of Halifax.



For more information, please contact:

James Collins
Industrial Leasing & Sales
902 489 0015
jcollins@cwatlantic.com

Marc Cheverie
Occupier Services
902 482 2998
mcheverie@cwatlantic.com

Bill MacAvoy
Managing Director
902 425 1872
bmacavoy@cwatlantic.com

Cushman & Wakefield Atlantic
601-5475 Spring Garden Road
Halifax, NS B3J 3T2
Main: +1 902 425 1444
Fax: +1 902 425 7374
cwatlantic.com

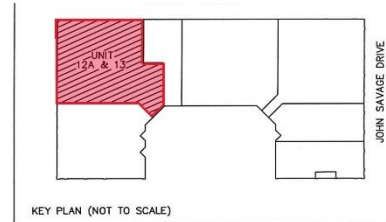
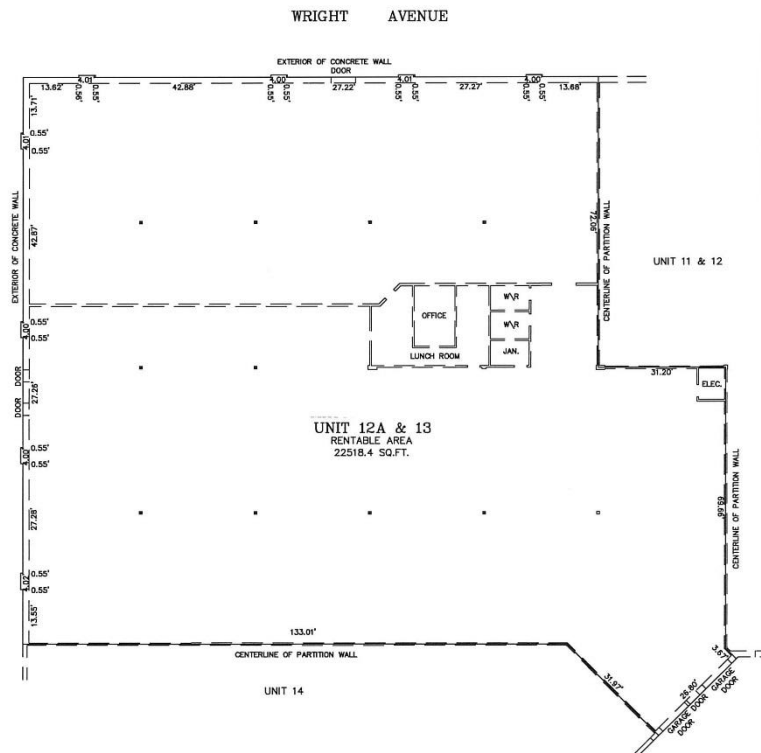
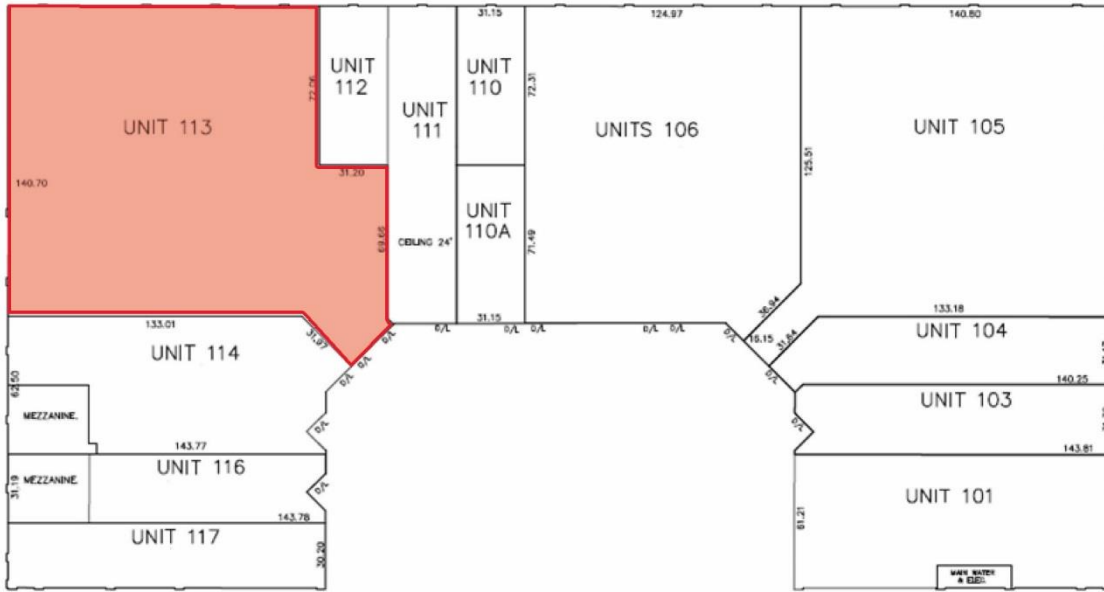


Floor Plan

WRIGHT AVENUE

MELLOR AVENUE

JOHN SAVAGE AVENUE



**THE WRIGHT PLACE
MATTRESS MART
CRU UNIT 12A & 13
DARTMOUTH, NOVA SCOTIA**

THOMPSON COAN LIMITED
NOVA SCOTIA LAND SURVEYORS
HALIFAX, NOVA SCOTIA
PHONE: 422-4800
FAX: 454-4700

LEGEND
⊗ COLUMN

SCALE: 1" = 20'
DATE: JUNE 16, 2009
FILE: 14314

MEASUREMENTS WERE TAKEN ON : OCTOBER 18, 2007
OCTOBER 25, 2007 AND MARCH 5, 2009

