

KELSEY HOUSE

1 PAPERMILL DRIVE, REDDITCH B98 8QJ



**FULLY FITTED OFFICE SPACE of 3,740 SQ FT TO LET
WITH GOOD TRANSPORT LINKS**



DESCRIPTION

Kelsey House is situated approximately two miles to the east of Redditch town centre on Papermill Drive which links directly to Redditch's dual carriage network and the M42. The M42 in turn provides direct access to the M40, M5 and M6 motorways.

Kelsey House comprises a three storey office building and within this building the ground floor is currently available to let. The suite is fully fitted to include a meeting room and furniture. See next page for specification and terms.

ACCOMMODATION

Floor	Sq Ft	Sq Mt
Gnd	3,740	347



CONTACT US

LIZ BAILEY

ASSOCIATE DIRECTOR
+44 121 616 5596
+44 7572 532 717
liz.bailey@cbre.com

OFFICES KELSEY HOUSE

1 Papermill Drive, Redditch B98 8QJ



Specification

The specification includes:

- Suspended ceilings
- Recessed Lighting
- Air conditioning
- Carpet covered raised access floors
- Window blinds
- Desks and chairs for c 30 staff
- Cabling
- Fully manned reception
- Shared Kitchen
- Shared male and female toilets
- 18 Car Parking Spaces



Terms

Rent

£12.50 psf

Service Charge

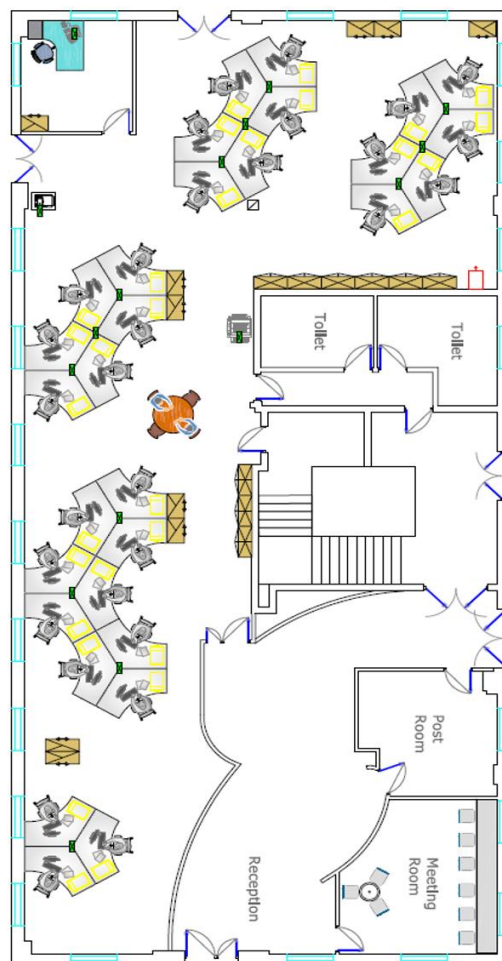
£TBC

Rates

The in-going tenant will be responsible for the payment of Local Authority rates.

Lease Terms

Available as a flexible sublease until July 2021.



Ground Floor Layout

© June 2019 CBRE, Inc. This information has been obtained from sources believed reliable. We have not verified it and make no guarantee, warranty or representation about it. Any projections, opinions, assumptions or estimates used are for example only and do not represent the current or future performance of the property. You and your advisors should conduct a careful, independent investigation of the property to determine to your satisfaction the suitability of the property for your needs.

Photos herein are the property of their respective owners and use of these images without the express written consent of the owner is prohibited.