

Property Available For Outdoor Events

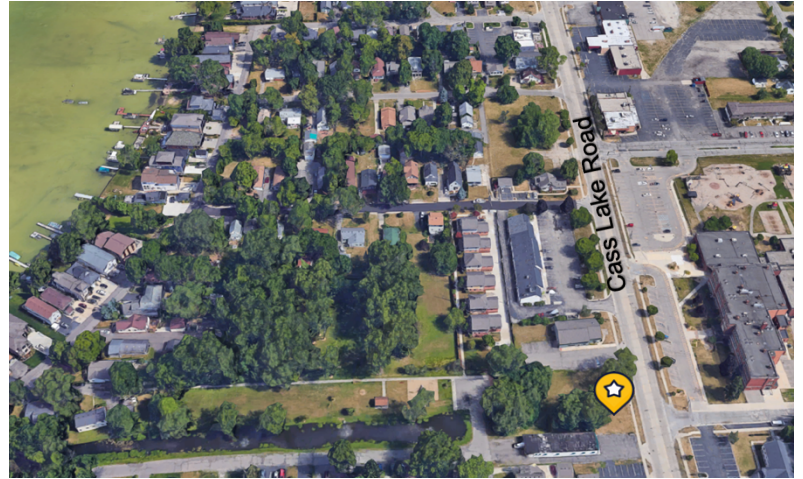
- Ideal for: Farmer's Markets, Wedding Receptions, Proms, Religious Services, Food Truck, Arts and Craft Shows, Car Shows, and additional parking
- .45 acre / 19,602 SF
- Highly visible property on Cass Lake Road
- Parking available on-site
- Frontage of 97.00' on Cass Lake Road

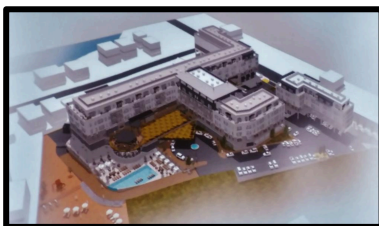
Details:

- Located in prime, Highly-desirable Oakland County, Michigan
- Within minutes from Cass Lake, Sylvan Lake, Orchard Lake and Elizabeth Lake
- Traffic Count: 17,222 Vehicles/day (Costar, 2018)

Demographics:

- Population: 170,178 | Households: 66,796 | Employees: 68,109
- Average household income: \$103,544/ annually





Gibbs Planning Group is currently leading a six-month master planning process to explore the transformation of Cass Lake Road into a traditional walkable village.